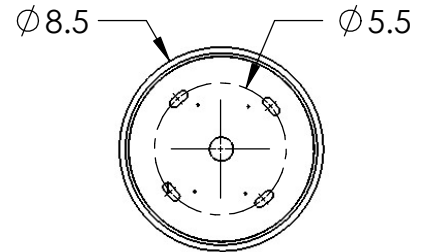
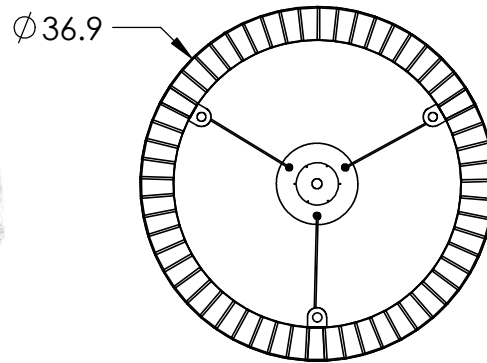
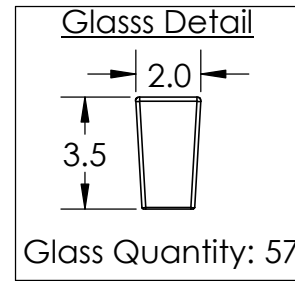
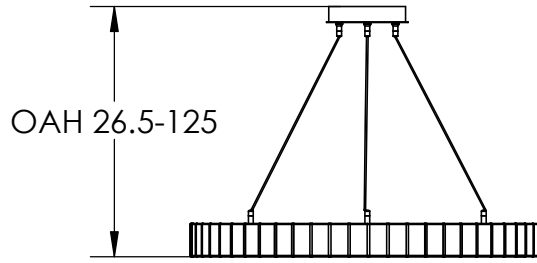


All dimensions are shown in inches unless otherwise stated.



Mounting Method: Mounts to Build Structure

PRODUCT DESCRIPTION

Reminiscent of a classic diamond tennis bracelet, this 36" diameter ceiling fixture adds a touch of modern elegance to any space. 3,000K integrated LED light refracting through clear hand-cast glass creates beautiful ambient light, while three cleverly concealed downlights provide additional task lighting. Choose from a wide selection of finishes.

PRODUCT SPECIFICATION

Construction: Aluminum Body, Cast Glass and Steel Braid Cable

Finish Options:

Glass Options: Clear Cast Glass

Suspension Method: Ceiling Mount

Weight (lbs.): 86

UL Rating: Indoor Dry

Top Diffuser: Closed Glass

Bottom Diffuser: Closed Glass

Light Source: LED

Electrical Qty: 4

Wattage (Watts): 82

Voltage (Volts): 120

Source Lumens: 3255

Dimming: Forward/Reverse Phase to 1%

CCT: 2700K or 3000K

Driver Quantity & Location: 2, in Canopy

CRI: 93+

Power Factor: >0.9

*Translucent finish upgrade available for additional charge

SCAN FOR MORE
INFORMATION

Notes:

GENERAL NOTES:

Visit studio.hammerton.com to read about our Lifetime Limited Warranty.

This product may use mixed materials (steel and aluminum) in its construction. Transparent finishes may vary between steel and aluminum.

All Hammerton fixtures are handcrafted by artisans. Subtle imperfections reflect the mark of the artisan and should be expected in any handcrafted product. Dimensions may vary up to 7/8".

Rev (A) 1/13/2022