

Designed by Louis Weisdorf

## PRODUCT



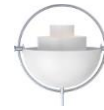
## COLORS



// All brass



// Black/ Brass



// White/ Chrome

## DESCRIPTION

The Multi-Lite was first drawn in 1972 when Louis Weisdorf did an exception to his own design custom of using multiple repeating elements. Instead it reflects his passion for diversity. The Multi-Lite Floor lamp has two individual rotating shades and can be transformed into multiple combinations where the light can be directed upwards, downwards or exude an asymmetrical art light. The lamp is available in different colors and all the shades are white lacquered inside.

## VERSION - MULTI-LITE TABLE

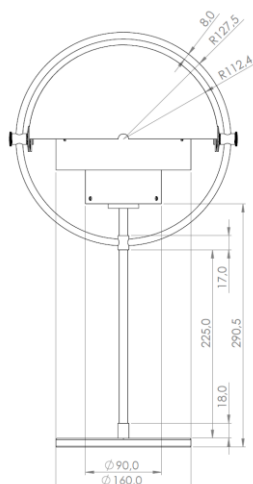
Colour codes are indicative:

All Brass - Brass colored cable, Brass foot switch, Black plug  
 Brass/Charcoal Black - RAL 9011 - Gloss level 5 - Brass cable, Brass foot switch, Black plug  
 Chrome/White - RAL 9003 - Gloss level 15 - Black cable, Black foot switch, Black plug

Base and centerpole:

- Brass on brass versions
- Chrome on chrome versions

## MEASUREMENTS



## FACTS

### MEASUREMENT - L x W x H mm

Lamp height: 500 mm  
 Lamp diameter: Ø255 mm  
 Wire length, exposed: Approx: 2000 mm

WEIGHT ITEM - LAMP INCL. WIRE  
 2750 g

PACKAGING TYPE  
 Cardboard box

### PACKAGING MEASUREMENT - L x W x H cm

L: 58 x W: 27 x H: 30

### WEIGHT PACKAGING - MATERIAL TYPE (recyclable)

- Polystyrene: 380 g  
 - PE polybag: 60 g  
 - Cardboard: 810

WEIGHT PACKAGING - TOTAL  
 1250 g

NUMBER OF PARCELS  
 1 pcs.

Designed by Louis Weisdorf

**ACCESSORIES**

-

**ENVIRONMENT**

-

**TESTS**

-

**CERTIFICATION AND LABELS**

CE-certified

**SAFETY INSTRUCTIONS**

If the cord or other electrical part is damaged, switch of the lamp and do not use it until it is repaired by a qualified electrician.

**INSTALLATION INSTRUCTIONS**

Instructions document no. 58-20-010-02

**LIGHT SOURCE:**

- Socket: E14 base
- Bulb types recommended:



- Recommended light sources:

470 Lumen (≤ 30W halogen, ~ 4-6W LED Dimmable)

- Max. light out put for above lamps:

(≤ 40W incandescent ≤ 30W halogen, ~ 5-6W LED Dimmable)

- Best result is achieved with frosted light bulbs

with a CRI (Colour Rendering Index) larger than 90.

- Lightbulb not included.

- All lamps can be fitted with a dimmer.

- Please contact your local electrician.



**CARE INSTRUCTIONS**

Wipe the shade with a damp cloth (avoid to soak shade and do not use hot detergent). Use only soft cloth for wiping and polishing. Never spray or clean with. Do not use cleaning materials, glass cleaner or household ammonia.

**TROUBLESHOOTING**

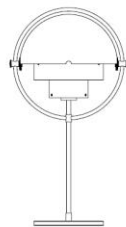
If lamp does not light, turn off the power. Check the bulb for a broken filament. Replace bulb if necessary. Turn light on. If the lamp still does not light, please contact customer service at the local dealer or the nearest GUBI dealer or agent if this lamp is damaged, except the replaced by a qualified electrician in order to avoid a hazard.

**TECHNICAL INFORMATION**

Light sources: E14, 470 Lumen (≤ 30W incandescent, ≤ 30W halogen, ~ 4-6W LED Dimmable). Turn power off when changing light bulb. Indicate class II. This lamp is not approved for outdoor use or use in damp/very damp (D2).

# GUBI

**ASSEMBLY INSTRUCTIONS**  
for  
Multi-Lite Table Lamp



\*Euro voltage: 230 V

\*Frequency: 50 Hz

\*Supply voltage: AC power -

\*Normally Closed: IP20



Class II / Double insulated



CE-Mark



# GUBI

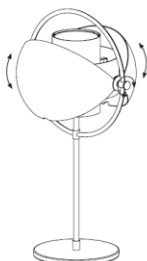
**ASSEMBLY INSTRUCTIONS**

**CONTENTS:**



**Adjusting the shade.**

The ball shades can be moved, and tightened by turning the fixing screw.



**Changing the bulb.**

