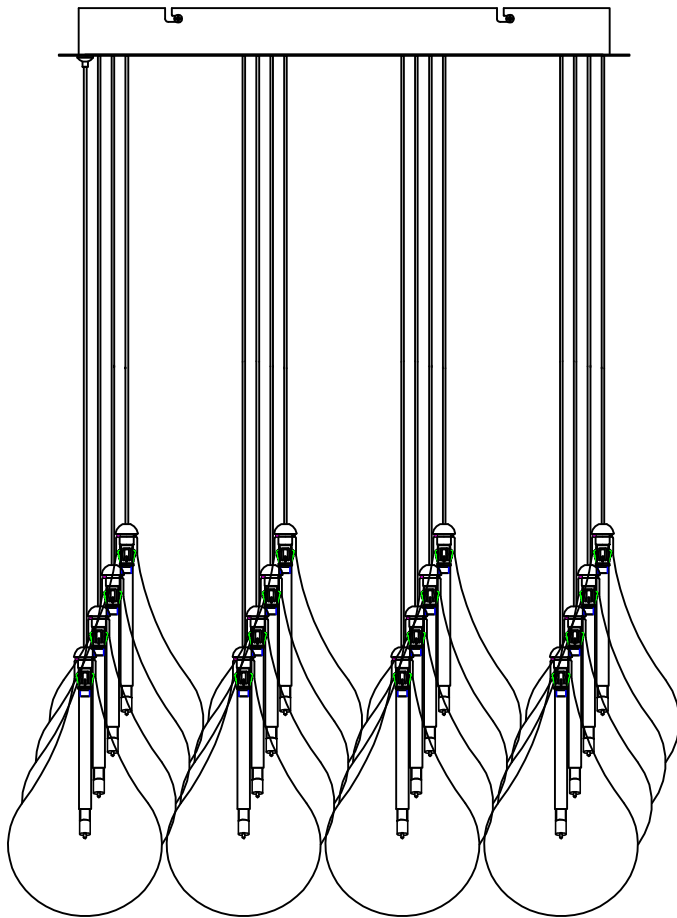




# Contemporary Lighting

PRODUCT NAME: LARMES  
ITEM NUMBER: E20117-18

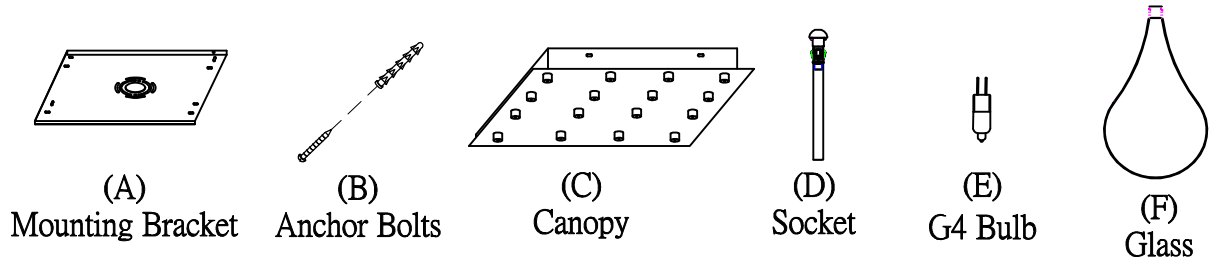
Please consult your electrician for hanging fixture and wiring.



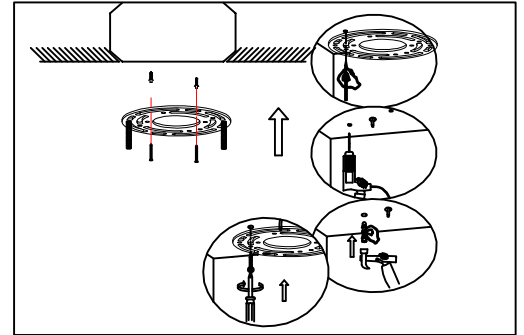
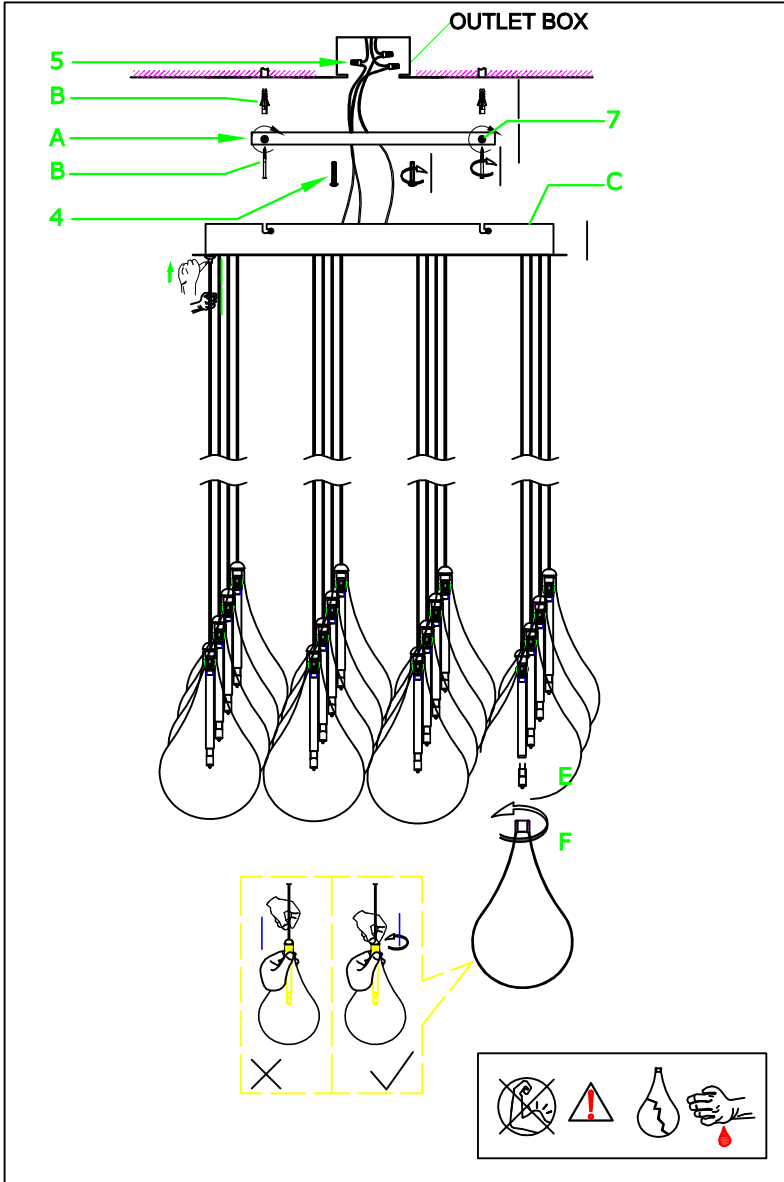
**WARNING:** Wires need to be connected to transformer found in canopy and should not be connected directly to power source or a short may occur

**Caution:** Xenon bulbs get very hot and may burn you. Always make sure bulbs are off for a minimum of 10 minutes before handling. Fixture may be dimmed using an electronic low voltage dimmer.

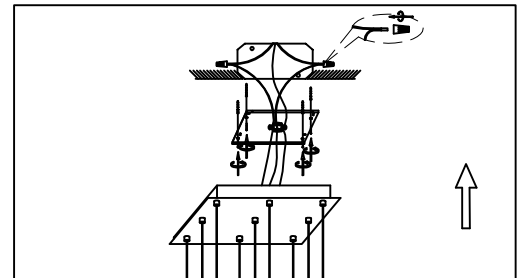
**IMPORTANT: Turn off the power at the main fuse or circuit breaker box before starting installation**



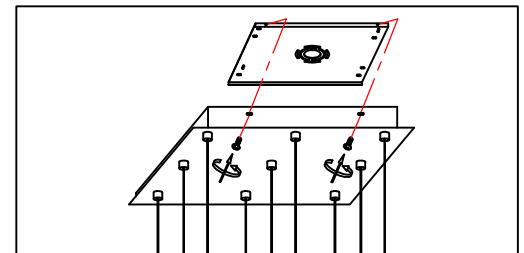
Locate all hardware & components before discarding packaging



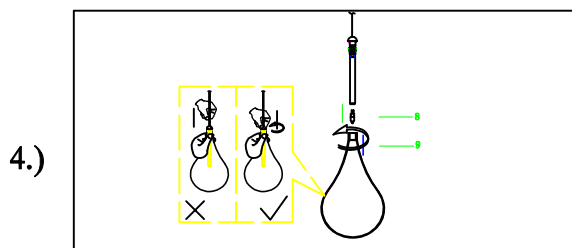
**Step.1: Remove mounting bracket (A) and install to electrical box. Mark where anchors meet ceiling, remove mounting bracket from ceiling, and then drill holes using 3/16" drill bit where marked (B). Install mounting bracket and attach anchors to secure bracket at ends.**



**Step.2: Wire fixture to wires in outlet box. Green wire is for Ground.**



**Step.3: Tighten screws (D) on the sides of the canopy (C) to secure the fixture.**



**Step.4: Install G4 bulb (E) provided. Gently turn glass (F) onto socket (D) to secure.**

**Cleaning & Care:**

Clean with soft cloth and a mild detergent. Do not use abrasive cleaner.