

Fixture Type: _____

Catalog Number: _____

Project: _____

Location: _____

Esprit Bathroom Sconce 3000K

| Model & Size | Color Temp & CRI | Watt | LED Lumens | Delivered Lumens | Finish |
|--------------|------------------|-------|------------|------------------|--------------------------------|
| WS-69815 15" | 3000K 90 | 10.7W | 845 | 636 | BN Brushed Nickel CH Chrome |

Example: **WS-69815-BN**

DESCRIPTION

High-performance LED modules. Slim, geometric profile.

FEATURES

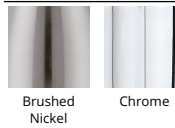
- LED modules positioned closer to diffuser for broader spread of illumination
- Driver installed within the Junction Box, driver dimension: 2.76" x 1.26" x 1.18"
- 5 year warranty

SPECIFICATIONS

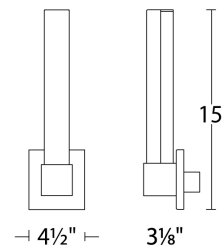
| | |
|----------------------|--|
| Color Temp: | 3000K |
| Input: | 120-277 VAC, 50/60Hz |
| CRI: | 90 |
| Dimming: | ELV: 100-10%, ELV: 100-5% |
| Rated Life: | 50000 Hours |
| Mounting: | Can be mounted on wall in all orientations |
| Standards: | ETL, cETL Damp Location Listed |
| Construction: | Aluminum body with etched acrylic diffuser |



FINISHES



LINE DRAWING



WS-69815

Fixture Type: _____

Catalog Number: _____

Project: _____

Location: _____

Esprit Bathroom Sconce 3000K

| Model & Size | Color Temp & CRI | Watt | LED Lumens | Delivered Lumens | Finish |
|--------------|------------------|-------|------------|------------------|--------------------------------|
| WS-69826 26" | 3000K 90 | 20.1W | 1784 | 1240 | BN Brushed Nickel CH Chrome |

Example: **WS-69826-BN**

DESCRIPTION

High-performance LED modules. Slim, geometric profile.

FEATURES

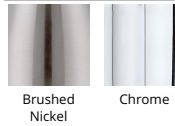
- LED modules positioned closer to diffuser for broader spread of illumination
- Driver installed within the Junction Box, driver dimension: 2.76" x 1.26" x 1.18"
- 5 year warranty

SPECIFICATIONS

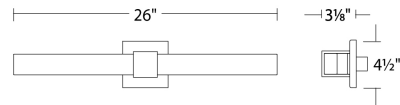
| | |
|----------------------|--|
| Color Temp: | 3000K |
| Input: | 120-277 VAC, 50/60Hz |
| CRI: | 90 |
| Dimming: | ELV: 100-10%, ELV: 100-5% |
| Rated Life: | 50000 Hours |
| Mounting: | Can be mounted on wall in all orientations |
| Standards: | ETL, cETL Damp Location Listed |
| Construction: | Aluminum body with etched acrylic diffuser |



FINISHES



LINE DRAWING



WS-69826

Fixture Type: _____

Catalog Number: _____

Project: _____

Location: _____

Esprit Bathroom Sconce 3000K

| Model & Size | Color Temp & CRI | Watt | LED Lumens | Delivered Lumens | Finish |
|--------------|------------------|-------|------------|------------------|--------------------------------|
| WS-69838 38" | 3000K 90 | 29.2W | 2712 | 2136 | BN Brushed Nickel CH Chrome |

Example: **WS-69838-BN**

DESCRIPTION

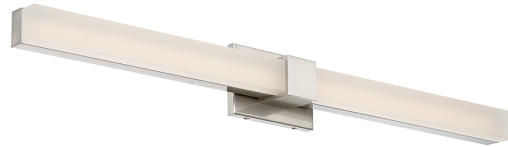
High-performance LED modules. Slim, geometric profile.

FEATURES

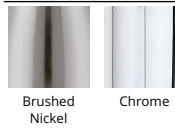
- LED modules positioned closer to diffuser for broader spread of illumination
- Driver installed within the Junction Box, driver dimension: 2.76" x 1.26" x 1.18"
- 5 year warranty

SPECIFICATIONS

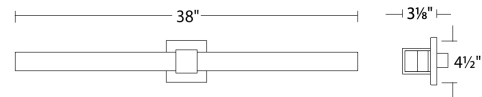
| | |
|----------------------|--|
| Color Temp: | 3000K |
| Input: | 120-277 VAC, 50/60Hz |
| CRI: | 90 |
| Dimming: | ELV: 100-10%, ELV: 100-5% |
| Rated Life: | 50000 Hours |
| Mounting: | Can be mounted on wall in all orientations |
| Standards: | ETL, cETL Damp Location Listed |
| Construction: | Aluminum body with etched acrylic diffuser |



FINISHES



LINE DRAWING



WS-69838