

E17 6.0W

SPECIFICATIONS & TECHNICAL DATA

The 120V EmeryAllen E17 retrofit lamp is an energy efficient alternative to incandescent E17 base lamps. It offers similar light output to a 120V, 70W incandescent (600lm) and is suitable for use in most 120V E17 fixtures.

| | |
|---------------------------|-------------------|
| Base Type | E17 |
| Material | Ceramic + PC |
| Input Voltage | 100-130V AC |
| Wattage | 6.0 |
| CRI | 90+ |
| Brightness | 600 lumens |
| Lumens/Watt | 100 |
| Color Temperature | 2700K + 3000K |
| R9 | 52 |
| R13 | 96 |
| Halogen Equivalent | 70W |
| Beam Angle | 360 degrees |
| Life | 25,000 hours |
| Warranty | Limited Lifetime* |

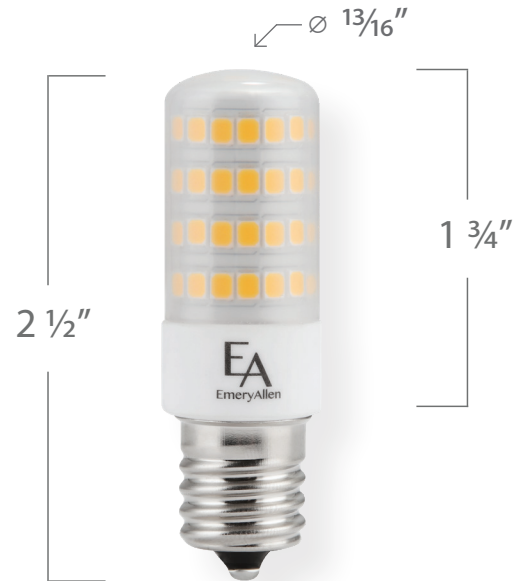
Available Models:

- EA-E17-6.0W-001-279F-D (2700K)
- EA-E17-6.0W-001-309F-D (3000K)

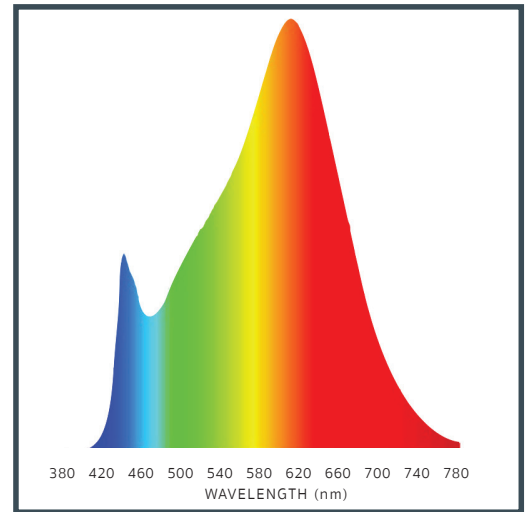
Dimming:

Dimmable with most incandescent and LED dimmers.

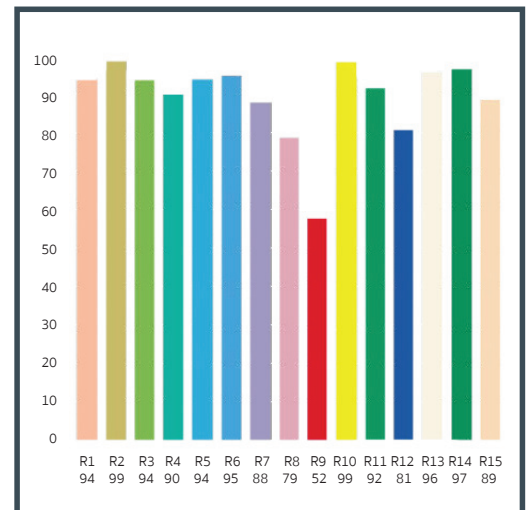
US PAT: US D850,663 ; US 10,605,412



SPECTRAL DISTRIBUTION



CRI VALUES R1-R15



120V
SERIES