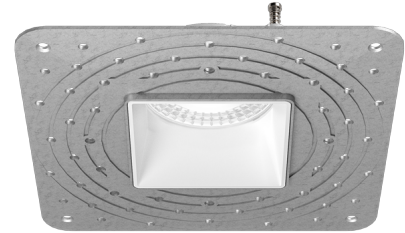


# Pex™ 3" Square Adjustable Trimless Smooth Reflector Trim

Pex™ Precision die-cast trims with twist-on system for easy tool-free installation



## Features

- 3" Square Adjustable Trimless Reflector (ELK381).
- 3" Trimless Spackle Frame Ordered Separately (EL03SFS).
- 35° Adjustability.
- Convenient twist-on design for easy installation.
- Damp Location Rated.
- Lamp: Koto™ LED Module and Canless Koto™ LED Module

## Technical Details

**Installation:** Twist-On design allows for easy mounting onto the Koto™ LED Module.

**Lamp:** Koto™ LED Module and Canless Koto™ LED Module.

**Listings:** Damp Location Rated.

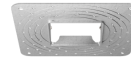
## Options



**ELK381 - White Adj. Reflector**

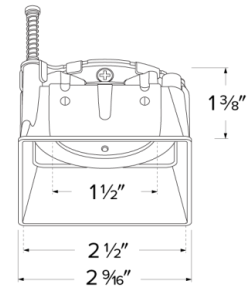
**ELK381 - Haze Adj. Reflector**

**ELK381 - Black Adj. Reflector**



**EL03SFS - Spackle Frame**

## Dimensions



## Product Numbers

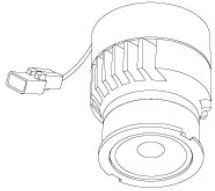
Item	Description	Finish
ELK381W	3" Square Adjustable Trimless Reflector	All White
ELK381H	3" Square Adjustable Trimless Reflector	All Haze
ELK381B	3" Square Adjustable Trimless Reflector	All Black

Item	Description	Finish
EL03SFS	3" Square Trimless Spackle Frame	

# Compatible Products

For use with 3" Koto™ Twist-&-Lock Trimless

## Koto™ LED Module



**Koto™ LED Module**  
ELK07, ELK09, & ELK11

PRODUCT NUMBER BUILDER			
Koto™ LED Module	Lumens	Color Temperature	Beam Angle
ELK			
07	750 lm	27 2700K	(blank) 38° lens (Standard)
09	950 lm	30 3000K	-S 18° lens
11	1150 lm	35 3500K	-N 25° lens
		40 4000K	-W 60° lens
		SD Sunset Dimming (For ELK09 & ELK11)	-FC 18° - 50° Adjustable (ELK07 Only)

### ACCESSORIES



**Lens**

- EP731C** 18° Lens
  - EP732C** 25° Lens
  - EP733C** 38° Lens
  - EP734C** 60° Lens
- EP732C, EP733C, EP734C Included



**Snoot**

- L50W** White
- L50B** Black



**Secondary Optics**

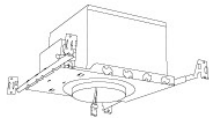
- L45** Hex Louver
- L46** Linear Lens
- L47** Spread Louver
- L49** Frosted Lens
- L51** Color Shifter

**Koto™ LED Module with 5-CCT Switch**

**Product Number**

<b>ELK08CT5</b>	825 lm
<b>ELK10CT5</b>	1000 lm

## 3" Koto™ Dedicated LED ICA Housings



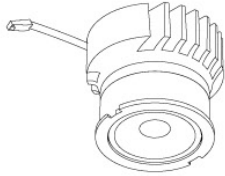
3" ICA Maximum Adjustability Housing  
**New Construction**

CAT NO.	SPECIFICATIONS
EL386ICA	Maximum Adjustability

# Compatible Products

For use with 3" Koto™ Twist-&-Lock Trimless

## Koto™ Architectural LED Light Engine



**Koto™ LED Light Engine**  
ELK19 - ELK21

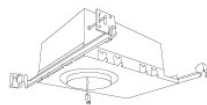
PRODUCT NUMBER BUILDER			
Koto™ LED Light Engine	Lumens	Color Temperature	Beam Angle
<b>ELK</b>			
<b>19</b>	750 - 850 lm	<b>27D</b> 2700K	<b>(blank)</b> 38° lens (Standard)
<b>21</b>	1100 - 1500lm	<b>30D</b> 3000K	<b>-S</b> 18° lens
		<b>35D</b> 3500K	<b>-N</b> 25° lens
		<b>40D</b> 4000K	<b>-W</b> 60° lens
		<b>SD</b> Sunset Dimming (ELK19 Only)	<b>-FC</b> 18° - 50° Adjustable (ELK21 Only)

ACCESSORIES	
	<b>Lens</b>
<b>EP731C</b>	18° Lens
<b>EP732C</b>	25° Lens
<b>EP733C</b>	38° Lens
<b>EP734C</b>	60° Lens
<small>*EP732C, EP733C, EP734C Included</small>	
	<b>Shoot</b>
<b>L50W</b>	White
<b>L50B</b>	Black
	<b>Secondary Optics</b>
<b>L45</b>	Hex Louver
<b>L46</b>	Linear Lens
<b>L47</b>	Spread Louver
<b>L49</b>	Frosted Lens
<b>L51</b>	Color Shifter

## 3" Koto™ Architectural Recessed Housings



3" High Lumen Maximum Adjustability ICA Housing  
1500 lm (18.9W) w/ELK21 Series Module  
Not for use with ELK19 Series Module  
**New Construction**



3" Shallow Maximum Adjustability ICA Housing  
850 lm (14.7W) w/ELK19 Series Module  
1100 lm (14.7W) w/ELK21 Series Module  
**New Construction**

CAT NO.	SPECIFICATIONS
E3LK53ICA	15.7W, 120V, Triac/ELV
E3LK54ICAD	15.7W, 120/277V, 0-10V/Triac/ELV
E3LK54ICAD-L	15.7W, 120/277V, 0-10V/Triac/ELV (Lutron 1% dimming)
E3LK54ICADAL	15.7W, 120/277V, DALI 2
E3LK84ICA	18.9W, 120V, Triac/ELV
E3LK85ICAD	18.9W, 120/277V, 0-10V/Triac/ELV
E3LK85ICAD-L	18.9W, 120/277V, 0-10V/Triac/ELV (Lutron 1% dimming)
E3LK85ICADAL	18.9W, 120/277V, DALI 2

CAT NO.	SPECIFICATIONS
E3LK76ICA	120V, Triac/ELV
E3LK77ICAD	120/277V, 0-10V/Triac/ELV
E3LK77ICADAL	120/277V, DALI 2

# Compatible Products



For use with 3" Koto™ Twist-On Trims

## Koto™ 24V DC LED Light Engine



24V DC Koto™ LED Light Engine

PRODUCT NUMBER BUILDER			
Koto™ LED Light Engine	Lumens	Color Temperature	Voltage
ELK			
	08 800 lm	27 2700K 30 3000K	-24 24V DC

*\*Standard module includes 38° installed with 25° & 60° field changeable lenses.*

### ACCESSORIES



#### Lens

#### Snoot

<b>EP731C</b> 18° Lens	<b>L50W</b> White
<b>EP732C</b> 25° Lens	<b>L50B</b> Black
<b>EP733C</b> 38° Lens	
<b>EP734C</b> 60° Lens	

\*EP732C, EP733C, EP734C Included with standard module



#### Secondary Optics

<b>L45</b> Hex Louver	<b>L57</b> White Hex Louver
<b>L46</b> Linear Lens	<b>L52</b> Blue Lens
<b>L47</b> Spread Louver	<b>L53</b> Pink Shifter
<b>L49</b> Frosted Lens	
<b>L51</b> Color Shifter	

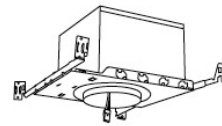
## 3" Koto™ Dedicated LED ICA Housings (24V DC Input)



24V DC 2-Hour Fire Rated 3" ICA Housing  
**New Construction**

CAT NO.	SPECIFICATIONS
E24V39FICA	7 1/2" Height - Sound Rated

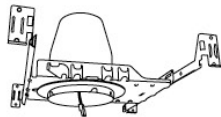
\*Requires 24V DC Transformer



24V DC 3" ICA Maximum Adjustability Housing  
**New Construction**

CAT NO.	SPECIFICATIONS
E24V386ICA	Maximum Adjustability

\*Requires 24V DC Transformer



24V DC 3" ICA Housing  
**New Construction**

CAT NO.	SPECIFICATIONS
E24V390ICA	

\*Requires 24V DC Transformer



24V DC 3" ICA Housing  
**Remodel**

CAT NO.	SPECIFICATIONS
E24V390RICA	

\*Requires 24V DC Transformer