

Caboche Plus, sospensione

by Patricia Urquiola , Eliana Gerotto

FOSCARINI



DESCRIPTION

Caboche was created in 2005 as a result of the desire to create a precious and charming lamp like a pearl bracelet, accommodated with a focus on light weight and transparency. Rich, bright and sophisticated, it was a success from the onset, becoming one of Foscarini's biggest bestsellers, and went on to become a genuine icon of designer lighting. It is now presented in the Plus version, with a new LED which guarantees a more intense light yet without creating glare. Total transparency wins in Caboche Plus, as your eyes roam through the entire lamp thanks to the new zigzagging arches which do not shield the light. What's more, the new attachment system, which is even simpler and more user-friendly, guarantees greater stability for the sphere and makes it simply to use.

MATERIALS

PMMA, blown glass, steel and coated aluminium

COLORS

Grey, Transparent

Caboche Plus, sospensione

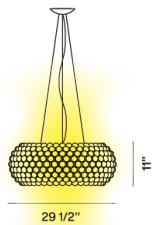
technical details

FOSCARINI

Suspension lamp with diffused light. Structure comprising transparent PC arches, onto which a series of PMMA spheres are applied, using the new twist lock system. The lamp body consists of two powder coated steel sheets, which incorporate the double-sided LED board, designed specifically by Foscarini, thereby obtaining a superior level of colour rendering (CRI) and retaining the same colour temperature as a halogen light source (degrees Kelvin). The LED board is installed on an aluminium disc that acts as a dissipator, which is protected at the top by a small opaline PMMA disc and at the bottom by a satin-finish PMMA diffuser. Three-point suspension system with steel cables. White ceiling canopy. Electric decentralisation kit available.

Caboche Plus grande LED

SCHEMATIC & LIGHT EMISSION



MATERIAL

PMMA, blown glass, steel and coated aluminium

COLORS



ACCESSORIES

Caboche Plus

LIGHT SOURCE

120V: LED incluso 33,5W 2700 K 3850 lm
CRI>90 * On/Off + 1-10V dimmer

CERTIFICATIONS



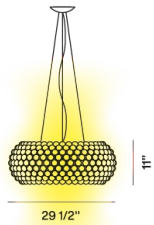
Caboche Plus, sospensione

technical details

FOSCARINI

Caboche Plus Grande LED mylight

SCHEMATIC & LIGHT EMISSION



MATERIAL

PMMA, blown glass, steel and coated aluminium

COLORS



ACCESSORIES

Caboche Plus

LIGHT SOURCE

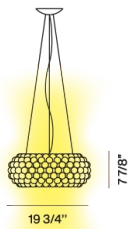
Dimmerable via Bluetooth with Casambi

CERTIFICATIONS



Caboche Plus media

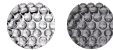
SCHEMATIC & LIGHT EMISSION



MATERIAL

PMMA, blown glass, steel and coated aluminium

COLORS



ACCESSORIES

Kit B
Kit F
Kit M

LIGHT SOURCE

Alogena 120V: Max 1x150W RSC, L: 20 1/2"

CERTIFICATIONS



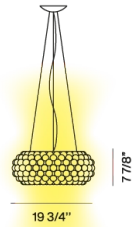
Caboche Plus, sospensione

technical details

FOSCARINI

Caboche Plus media LED

SCHEMATIC & LIGHT EMISSION



MATERIAL

PMMA, blown glass, steel and coated aluminium

COLORS



ACCESSORIES

Kit B

LIGHT SOURCE

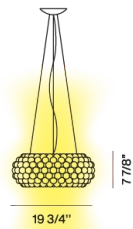
120V: LED incluso 27W 2700 K 3200 lm CRI>90
* On/Off + 1-10V dimmer

CERTIFICATIONS



Caboche Plus media LED MyLight

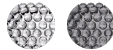
SCHEMATIC & LIGHT EMISSION



MATERIAL

PMMA, blown glass, steel and coated aluminium

COLORS



ACCESSORIES

Caboche Plus

LIGHT SOURCE

Dimmable via Bluetooth with Casambi

CERTIFICATIONS



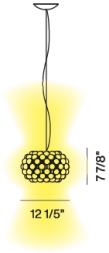
Caboche Plus, sospensione

technical details

FOSCARINI

Caboche Plus piccola LED

SCHEMATIC & LIGHT EMISSION



MATERIAL

PMMA, blown glass, steel and coated aluminium

COLORS



ACCESSORIES

Kit B
Kit F
Kit M

LIGHT SOURCE

120V: LED incluso 9,5W 2700 K 1000 lm
CRI>90 * On/Off

CERTIFICATIONS



Caboche Plus, sospensione

Designer

FOSCARINI

PATRICIA URQUIOLA

An internationally renowned architect and designer, Patricia Urquiola has received multiple major acknowledgements such as the “Designer of the Decade” title from the Home and Häuser magazines, and “Designer of the Year” from Wallpaper, Ad Spain, Elle Decor International and Architektur und Wohnen Magazine.

Some of her projects are exhibited in several museums and collections. Together with Eliana Gerotto, industrial designer, curator of outfits and interior decorator, she has designed Caboche, a precious, luminous emotion that stems from a combination of technology and creativity.



Caboche Plus, sospensione

Designer

FOSCARINI

ELIANA GEROTTO

A Venetian, she obtained her diploma in Communication Techniques in Milan. She has worked as a graphic designer for the Parisian magazine, Elle, and for the Venice Biennale, while she co-operates with some major Italian brands as image and product consultant.

Her creative entrepreneurship drives her towards ever-differing professional experiences, from interior designs to furnishings and even jewellery. Together with Patricia Urquiola, she has designed Caboche, a precious, luminous emotion that stems from a combination of technology and creativity.



Caboche Plus, sospensione

family

FOSCARINI



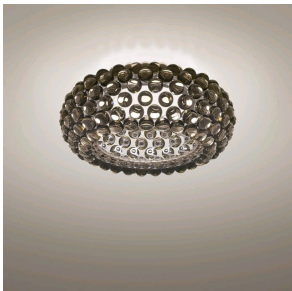
Caboche Plus



Caboche Plus



Caboche



Caboche Plus