

# BUSTER+PUNCH

LONDON

[ range.

## **FORKED / SPARES**

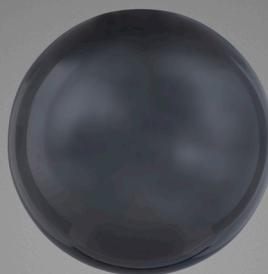
[ type. **SPARES.** ]

[ detail. **FORKED.** ]

[ process. **ROUGH-CAST.** ]

[ region. **NORTH AMERICA.** ]

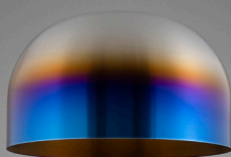
Spare parts and replacements for our Forked range of lights. Includes fittings, shades, globes and bulbs.



[ finish. **GLOBE / SMOKED.** ]



[ finish. **GLOBES.** ]



[ finish. **SHADES.** ]



[ finish. **SHADE / BRASS.** ]

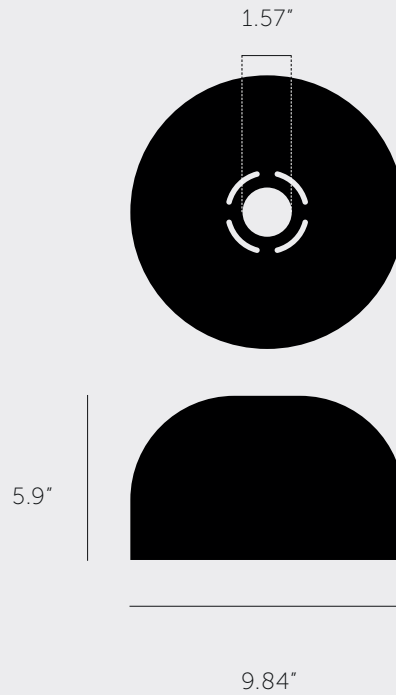
---

[ type. **SHADE / MEDIUM.** ]

---

[ info. **MEASUREMENTS.** ]

---



---

[ info. **SPECIFICATIONS.** ]

---

A medium light shade made from hand-spun metal for use with our Forked ceiling or pendant light.

Available in three finishes: steel, burnt steel and brass.

---

[ info. **FINISH & SKU NUMBERS.** ]

---

[ finish. ]

[ SKU. ]

● Steel

UFS-07733

● Burnt Steel

UFS-36739

● Brass

UFS-05735

---

[ info. **CARE INSTRUCTIONS.** ]

---

Wipe with damp cloth with no loose hairs, avoid using any chemicals. All finishes are prone to ageing.

---

[ please. **NOTE.** ]

---

DISCLAIMER: Always consult a trade professional when installing this shade. Buster + Punch is not responsible for the usage or feasibility of installation requirements. This product is not suitable for damp or wet environments.

---

[ type. **SHADE / LARGE.** ]

---

[ info. **MEASUREMENTS.** ]

---

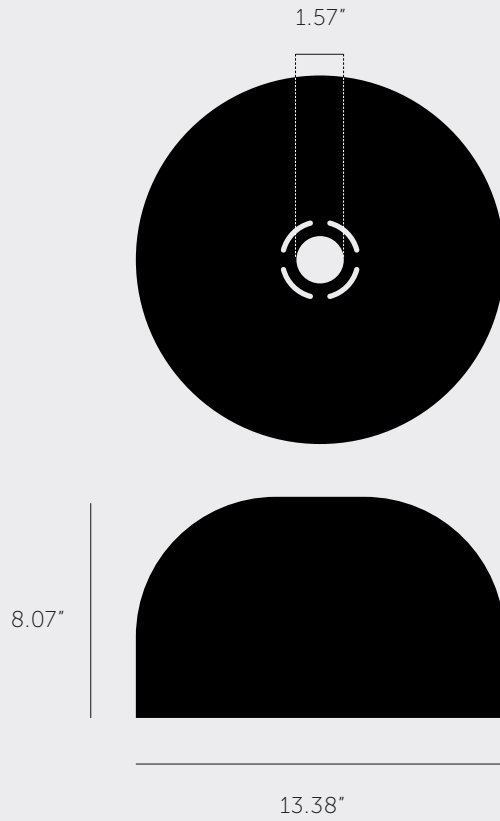
---

[ info. **SPECIFICATIONS.** ]

---

A large light shade made from hand-spun metal for use with our Forked ceiling or pendant light.

Available in three finishes: steel, burnt steel and brass.



---

[ info. **FINISH & SKU NUMBERS.** ]

---

[ finish. ]

[ SKU. ]

Steel

UFS-07741

Burnt Steel

UFS-36747

Brass

UFS-05743

---

[ info. **CARE INSTRUCTIONS.** ]

---

Wipe with damp cloth with no loose hairs, avoid using any chemicals. All finishes are prone to ageing.

---

[ please. **NOTE.** ]

---

DISCLAIMER: Always consult a trade professional when installing this shade. Buster + Punch is not responsible for the usage or feasibility of installation requirements. This product is not suitable for damp or wet environments.

---

[ type. **GLOBE / MEDIUM.** ]

---

[ info. **MEASUREMENTS.** ]

---

---

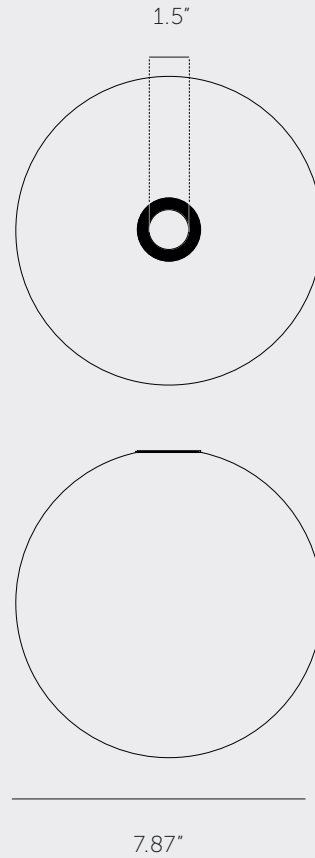
[ info. **SPECIFICATIONS.** ]

---

A medium handblown glass globe for use with our Forked Ceiling or Pendant light.

Available in opal or smoked glass.

7.79"



---

[ info. **FINISH & SKU NUMBERS.** ]

---

[ finish. ]

[ SKU. ]

● Opal

NFG-37750

● Smoked

NFG-09752

---

[ info. **CARE INSTRUCTIONS.** ]

---

Wipe with damp cloth with no loose hairs, avoid using any chemicals. All finishes are prone to ageing.

---

[ please. **NOTE.** ]

---

DISCLAIMER: Always consult a trade professional when installing this globe. Buster + Punch is not responsible for the usage or feasibility of installation requirements. This product is not suitable for damp or wet environments.

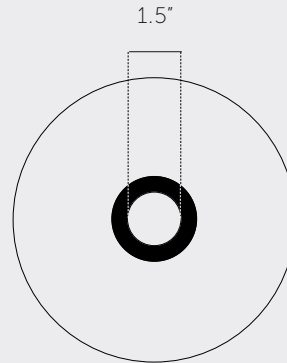
---

[ type. **GLOBE / LARGE.** ]

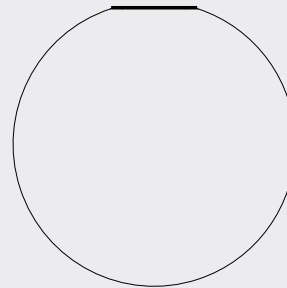
---

[ info. **MEASUREMENTS.** ]

---



11.33"



11.41"

---

[ info. **SPECIFICATIONS.** ]

---

A large handblown glass globe for use with our Forked Ceiling or Pendant light.

Available in opal or smoked glass.

---

[ info. **FINISH & SKU NUMBERS.** ]

---

[ finish. ]

[ SKU. ]

● Opal

NFG-37763

● Smoked

NFG-09765

---

[ info. **CARE INSTRUCTIONS.** ]

---

Wipe with damp cloth with no loose hairs, avoid using any chemicals. All finishes are prone to ageing.

---

[ please. **NOTE.** ]

---

DISCLAIMER: Always consult a trade professional when installing this Globe. Buster + Punch is not responsible for the usage or feasibility of installation requirements. This product is not suitable for damp or wet environments.