

HF8888

AVE

L I G H T I N G

Chandelier

Thank you for your purchase.

Welcome to the Avenue Lighting Family. Please follow these instructions carefully as they contain important information about the safety, use and disposal of this product. Read and understand all instructions before proceeding with assembly and installation of this fixture.

- Make sure the power is completely off at the fuse box.
- Your fixture must be installed by a qualified, licensed electrician.
- Ensure that everything is prepared in a CLEAR area
- Gloves should be worn at all times during this installation.
- Read these instructions carefully before beginning assembly.
- Keep this sheet for future reference.

Please Note: All AVE LED Fixtures come with pre-wired LED module(s). Unless instructed to do so, please do not touch any part of the LED module(s) as any unnecessary contact with the module could cause permanent damage. For dimming, an ELV (Electronic Low Voltage) type of dimmer is required.

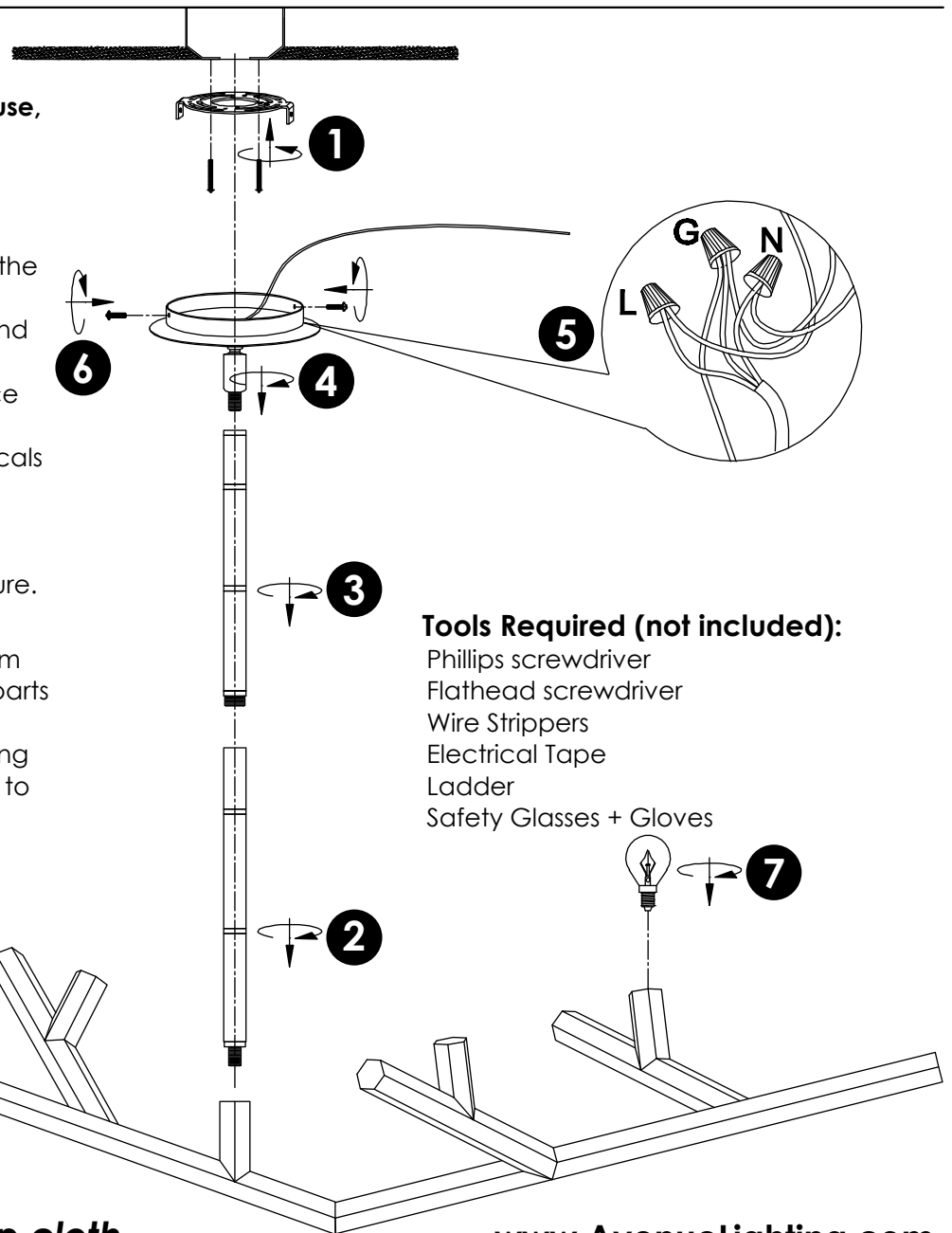
Specifications of Installation

In order to ensure safety during use, please note the following:

- Suitable for the use of 110-130V and 60 Hz.
- Please wear gloves during installation to avoid damaging the fixture's finish.
- This fixture must be hardwired and checked annually.
- Please turn off the lighting source with a soft cloth
- Avoid cleaning with any chemicals or detergent
- Please connect with your local sales representative if there are any abnormalities with your fixture.

Preparation:

Carefully remove the fixture from the carton and check that all parts are included as shown in the illustration. If any parts are missing or damaged, DO NOT attempt to assemble the product.



Tools Required (not included):

- Phillips screwdriver
- Flathead screwdriver
- Wire Strippers
- Electrical Tape
- Ladder
- Safety Glasses + Gloves

Clean with a soft damp cloth.

www.AvenueLighting.com