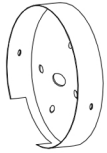


Parts Included:

Mounting Strap



Mounting Screw



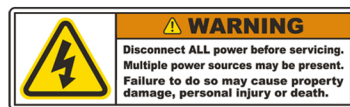
Screw



CSA / UL Safety Requirements

CSA/UL requires that these IMPORTANT SAFETY INSTRUCTION be listed:

- Before starting installation of this fixture or removal of a previous fixture, disconnect the power by turning off the circuit breaker or by removing the fuse at the fuse box.

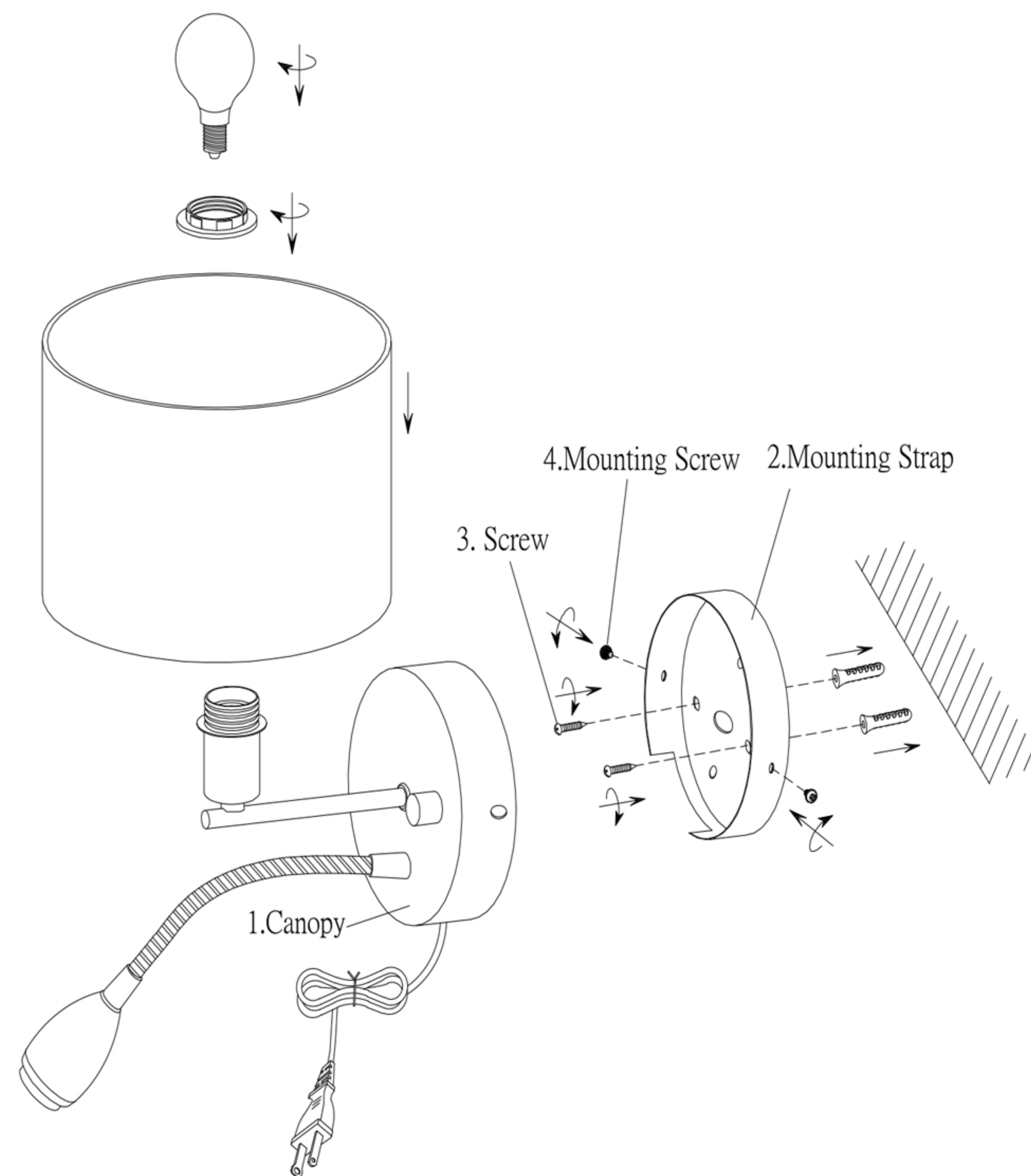


- Consult a qualified electrician if you have any electrical questions or need to replace the driver.

Care Instructions

Arnsberg suggests using only a micro fiber cleaning cloth to clean this fixture. If required, a slightly damp cleaning cloth may be used to spot clean. Do not use common household cleaners on this fixture, as the final finish may be damaged as a result. Enjoy your new Arnsberg fixture.

Mounting Instructions:



Assembly Instructions:

1. Mount the mounting strap (#2) to the wall using the screws (#3).
2. Place the canopy (#1) over the mounting strap (#2), position the mounting screws (#4) through the holes, and tighten the mounting screws (#4) to secure the canopy.
3. Before completing installation, place the lampshade on the corresponding rotary button positions of the chassis, and lock the lampshade according to the arrow direction.
4. Installation is complete, turn on the power at the circuit breaker of the fuse box. Turn the light switch on to activate the fixture.