

KN95 Face Mask

User Manual

Model Number: FM1-4plus

Easy@Home® KN95 Face Mask protects from dust and other large particles, and anti-inhalation allergens such as pollen.

Filtration efficiency

BE(Bacterial filtration efficiency) >98%
PFE(Nonoil particle filtration efficiency) >95%

Product component

A mask body, strap, the nose clip.

Instructions for use



Step 1: Remove the protective clip and stretch the mask, make sure the position of the metal nosepiece is on top.



Step 2: Apply the filter to the inner side of the mask.

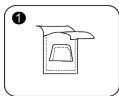


Step 3: Cover the mask on the nose and mouth, and pull the straps around both ears.

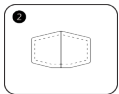


Step 4: Fix metal nosepiece to mode the nose area, then check air leakage by covering the mouth and nose with both hands, and exhale. Readjust nosepiece if air leaks around the nose.

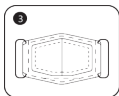
Instructions for replacing the filter



Step 1: Tear off the filter packaging paper bag and take out the filter.



Step 2: Unfold the filter along the overlap to form a three-dimensional shape.



Step 3: Tear off the paper on the two sides of the filter and stick the two sides of the filter to the inner layer of the mask.

Storage and usage recommendations

1. Wash your hands before wearing and avoid touching the inside of the mask when wearing.
2. If needed, the mask can be recycled and should be stored in a clean, open paper bag; If necessary, it can be rinsed with clean water and hung in a clean, dry and ventilated place;
3. The mask should be sealed in individual package and avoid being touched.
4. If the mask is dirty, deformed, damaged, or has an odor, it should be replaced in time.
5. If the mask comes into contact with or is in close contact with the patient's blood, respiratory / nasal secretions or is contaminated by other bodily fluid, please immediately replace it.
6. This product is prohibited to be washed by hot water above 140°F (60°C) or disinfected by detergent, ultraviolet rays, microwave oven, steam, alcohol or disinfectant etc, as this can permanently damage the mask(s).

Precautions

The following people should not wear masks:

- 1) People with heart or respiratory problems (such as asthma, emphysema), and please try not to be exposed to the hazy environment for a long time.
- 2) Pregnant women.
- 3) Dizziness, dyspnea and those with sensitive skin after wearing.
- 4) Children under 3 years old.

Storage conditions

Store at room temperature, avoid moisture and water.

Packing 1 Mask + 4 Filters/Pack.

Production date / batch number See packaging.

Shelf life 36 months

Healthcare-Manager.com

Questions or comments?

Please call toll-free:

1-855-822-6999 M-F 9 a.m.-5 p.m. CST

E-mail: service@healthcare-manager.com

Easy Healthcare Corporation

360 Shore Dr. Burr Ridge, IL USA 60527