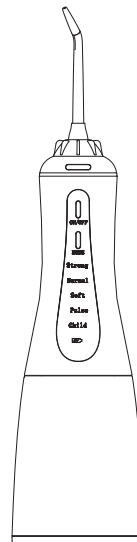


Thank You For Purchasing The Portable Oral Irrigator.

Oral irrigator provides a unique combination of water pressure and pulsation to clean deep between teeth and below the gumline, removing harmful bacteria and debris that traditional brushing and flossing can't reach. It massages and stimulates gums to improve circulation and keeps your gums strong and healthy. Also it is ideal for cleaning around dental bridges, braces and crowns. To make your family enjoy oral SPA even at home!



Portable Oral Irrigator

Usage Manual

AOW03

Thank you for choosing our portable Oral Irrigator! To make your teeth more healthier, and your smile more brighter.

Contents.....	01
Safeguards	02-05
Product Description	06
Product Accessories	07
Operating Procedures	08
Usage Instructions	09
Recommended Techniques	10
Disassembly Example	11
Battery Maintenance And Handling	12
Common Problems	13
After-sales Services	14

IMPORTANT SAFEGUARDS

When using electrical products, especially when children are present, the basic safety precautions below should always be followed.

READ ALL INSTRUCTIONS BEFORE USING.

DANGERS:

To reduce the risk of electrocution:

- ◆ Do not handle charger with wet hands.
- ◆ Do not immerse in water or other liquid.
- ◆ Do not use while bathing.
- ◆ Do not place or store product where it can fall or be pulled into a tub, shower stall or sink.
- ◆ Do not reach for a product that has fallen into water. Unplug immediately.
- ◆ Check the charger cord for damage before the first use and during the life of the product.

WARNING:

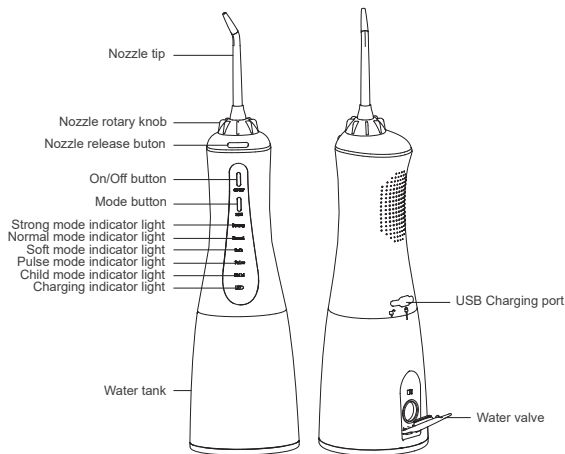
To reduce the risk of burns, electric shock, fire, serious injury or damage to issue:

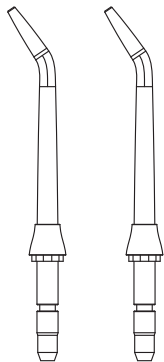
- ♦ This appliance can be used by children aged from 8 years and above and persons with reduced physical, sensory or mental capabilities or lack of experience and knowledge if they have been given supervision or instruction concerning use of the appliance in a safe way and understand the hazards involved.
- ♦ Oral irrigators shall be used only with cold or warm water, or specific solutions as defined in the manufacturer's instructions.
- ♦ Children shall not play with the appliance.
It must only be supplied at safety extra low voltage corresponding to the marking on the appliance.
- ♦ The product contains batteries that are non-replaceable.
- ♦ Do not plug this device into a voltage system that is different from the voltage system specified on the device or charger.
- ♦ If product is opened/disassembled for ANY reason, warranty is VOID.
- ♦ Do not use this product if it has a damaged cord or plug, if it is not working properly, if it has been dropped or damaged, or dropped into water. Please contact your local distributor.
- ♦ Do not direct water under the tongue, into the ear, nose or other delicate areas. This product is capable of producing pressures that may cause serious damage in these areas.
- ♦ Do not direct water into the nose or ear. The potentially deadly amoeba, *Naegleria fowleri*, may be present in some tap water or unchlorinated well water and may be fatal if directed into these areas.

- ♦ Use this product only as indicated in these instructions or as recommended by your dental professional.
- ♦ Magnetic field: Pacemakers and similar implanted medical devices may be affected by magnet.
- ♦ Do not drop or insert any foreign object into any opening on the product.
- ♦ Keep charging unit and cord away from heated surfaces.
- ♦ Do not use this product outdoors or operate where aerosol (spray) products are being used or where oxygen is being administered.

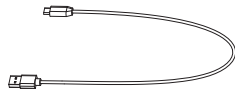
- ♦ Closely instruct and supervise children and individuals with special needs in the proper use of this product.
- ♦ Children should be supervised to ensure that they do not play with the appliance.

SAVE THESE INSTRUCTIONS.





Standard jet tips x 2

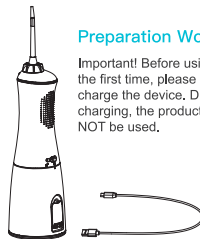


USB charging cable

The jet tips and other changeable components can be purchased from retail stores.

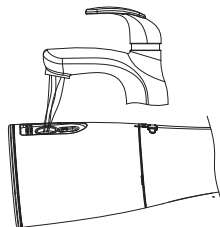
Preparation Work.

Important! Before using for the first time, please fully charge the device. During charging, the product CAN NOT be used.



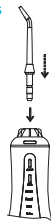
Open the water tank lid and pour water into the water tank;

Note: please ensure that when pouring water into the water tank, the device is switched off.



Insert and remove tips

Insert the tip into the center of the knob until there is "click" sound.



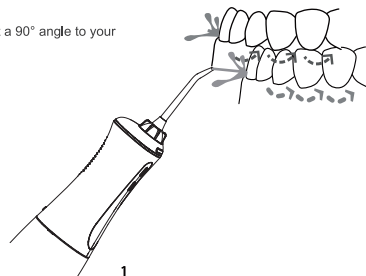
To remove the tip, press the nozzle release button.



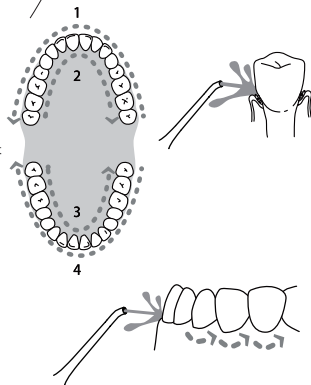
- ◆ This product has memory function, the mode remains the same as last usage when switched on again.
- ◆ We can select mode first before switch on the machine.
- ◆ The charging indicator light keeps red on when charging, and keeps green on when fully charged.
- ◆ If when charging indicator light become red and flashes, it means the battery is insufficient, recharged is required.
- ◆ This product can NOT be used during charging.
- ◆ Ergonomically designed and 360° rotated tip, allow us easy to control water flow to reach all areas of mouth.



Direct the jet stream at a 90° angle to your gumline.



Close lips to avoid splashing but allow water to flow freely from mouth into the sink. For best result, start in the molar area (back teeth) working toward the front teeth. Glide jet tip along gumline and pause briefly between teeth. Continue until all areas around and between the teeth have been cleaned.



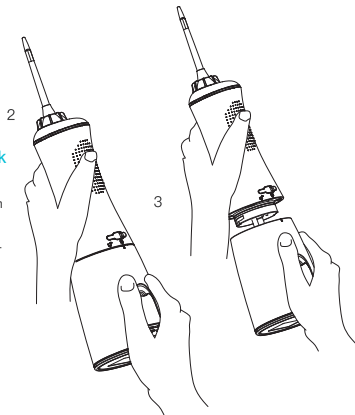
After usage

Please switch off the power, as well as empty the water tank.



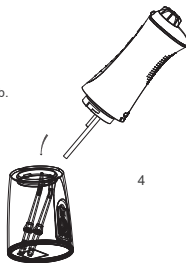
Disassemble water tank or store nozzle tips

Using both hands as indicated in Diagram 2,3 - use your left hand to hold the product body, and your right hand to hold the water tank. At the same time rotate downwards in an anti-clockwise direction, in order to remove the water tank.



Storage for nozzle tips

The water tank can store nozzle tips, when using, disassemble water tank and take out the nozzle tip, install it in the knob. After finish using, take nozzle tip off and put it in the tank. pls check the diagram 4.



Battery Maintenance And Handling

Battery Maintenance

- ◆ For first usage, the device must be fully charged, for approximately 5 hours.
- ◆ If device will be stored for long time, please fully charge it in advance.
- ◆ In order to extend battery lifespan, please recharge in time when power is insufficient.

Battery Handling

The device includes a lithium battery which cannot be changed. To preserve the environment, do not throw away the appliance with the normal household waste at the end of its life, but handle it in at an official collection point for recycling.

Problems	Reasons	Solutions
Leakage of water between jet tip and screw part	The seal ring on the fixed socket for the jet tip is damaged, and the jet tip can not be installed properly	Contact the retailer for repair, and install the jet tip properly
Water tank leaks water	Seal ring is loose	Re-install correctly
Inadequate pressure	Low voltage usage	Use after recharging
Device can not be switched on	Low voltage usage	Use after recharging
Water is not coming out	Nozzle clogging Water valve plate is too dry	Suck the jet tip by mouth inject water to jet tip or fill water into water tank and shake
No temperature and PPM showing	Water no touch sensor	Lean the irrigator to make water touch the sensor completely

If the above methods cannot resolve these problems, please consult with the retailer or proceed to the designated after-sales repair site for repairs.

Gentle reminder

- At the time of initial usage, please select "soft mode," in order to avoid the gums bleeding due to lack of adaption to usage. After consistent usage for two weeks there should be improvements. If bleeding is excessive or bleeding continues after two weeks, chronic gum inflammation could be an issue. The professional dental treatment is recommended.
- It is not recommended that used by children, or people with dental implants, oral ulcers or open oral sores.

Thank You For Purchasing The Portable Oral Irrigator — Please Take Note Of The Following Issues:

In accordance with relevant national regulations, the product shall be repaired free of charge within one year due to non-human factors (subject to the date of purchase invoice). The warranty does not cover the accessories, such as jet tip. If the warranty period has expired, please go to the designated after-sales service center for paid maintenance.

Maintenance and repair record

Customer name		Contact number	
Product model		Product color	
Purchase date		Purchase platform	
Contact address			
Maintenance date			