



Laura  
Shawl

S11032



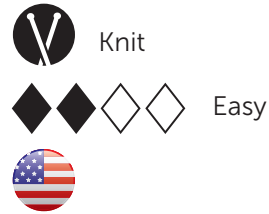


S11032

V.1/MZ/MD

# Laura Schal

Design: Käte Stödter



Recommended Yarn

## SIZE

Approx. 30 x 190 cm

## MATERIALS

Schachenmayr Lovely Mohair, 100 g ball  
 Approx. 100 g ≈ 600 m  
 Col. 00001 (natur) 1 ball

iCirc. needle size 5.0 mm (US size 8), 60 cm long  
 1 tapestry needle for weaving in ends

## GAUGE

### Fantasy pattern:

15 st and 21 rows = 10 x 10 cm

## THE BASICS

### Fantasy pattern:

Number of st multiple of 6 st + 1 st + 2 selvage st.  
 Work according to the chart. Read RS rows from right to left. WS rows: work the st as they appear, purl yarnovers.  
 Selvage st, repeat the pattern repeat (= 6 st), end with 1 st after the pattern repeat, selvegde st.  
 Repeat R 1 to 4 throughout.

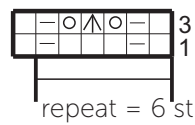
## INSTRUCTIONS

Using Natur, cast on 51 st. WS row: knit all st.  
 Then cont. in fantasy pattern.  
 When the piece measures approx. 190 cm, or when the yarn is finished, bind off all st loosely. You need approx. 1.5 m yarn for binding off.

## FINISHING

Dampen and block the shawl according the measurements; allow to dry. Weave in all ends.

## Chart



## Key

- = RS: knit. WS: purl
- ⊙ = yarnover, in the next WS row: purl yarnover
- ◻ = RS: purl. WS: knit
- ⋈ = slip 2 st together knitwise, k1, then pass over the 2 st

## ABBREVIATIONS

- k = knit
- p = purl
- R = row(s)
- RS = right side
- st = stitch(es)
- WS = wrong side