

Alaris® PK syringe pump Specifications

Rate Range

5ml syringe	–	0.1 to 150ml/h
10ml syringe	–	0.1 to 300ml/h
20ml syringe	–	0.1 to 600ml/h
30ml syringe	–	0.1 to 900ml/h
50ml syringe	–	0.1 to 1200ml/h

Volume Infused

0.0 - 9990ml

Bolus Rate (in TIVA mode)

5ml syringe	–	max bolus rate 150ml/h
10ml syringe	–	max bolus rate 300ml/h
20ml syringe	–	max bolus rate 600ml/h
30ml syringe	–	max bolus rate 900ml/h
50ml syringe	–	max bolus rate 1200ml/h

Battery Type

Rechargeable sealed NiMH, automatically charged when pump is connected to AC power
 Battery Life is typically 6 hours from fully charged battery (5ml/h @ 20°C under normal conditions)
 Consult operating instructions.

Recharge Time

2½ hours from discharge to 90% charge

Pumping Pressure Limits

Highest alarm level: 1000 mmHg (L-10) Factory Preset: 500 mmHg (nominal L-5) Occlusion levels L-0 to L-10.

Max Purge Volume Range

100ml/h - 500ml/h (limited to size of syringe) limit 0.5 - 5.0ml

Accuracy (ml/h mode)

Volumetric +/- 2% (nominal)

Syringe Size/Type

5ml, 10ml, 20ml, 30ml or 50ml disposable syringe of type specified on pump

TCI Models

TCI Models	Optional TCI Models
Plasma targeting mode only	Propofol Schnider (Plasma & Effect Site targeting)
Propofol Marsh	Propofol Kataria (Plasma targeting only)
Remifentanyl Minto	Propofol Paedfusor (Plasma targeting only)
Sufentanil Gepts	Alfentanil Maitre (Plasma & Effect Site targeting)
	Remifentanyl Minto (Effect Site targeting mode)
	Sufentanil Gepts (Effect Site targeting mode)

TCI predictions in normal TIVA mode is available for all TCI models

*Consult local licensing, availability & prescribing information

Alarms

Audible alarm and display prompts with comprehensive protection for:

- Pressure limit exceeded
- Drive disengaged
- Infusion complete
- Purge/Bolus activated
- Limits for Dose
- Limits for Plasma Calculation
- Limits for Patient Weight
- Nurse Call Back
- Near end infusion
- Battery low
- AC power failure
- Syringe clamp

AC Power Requirements

115-230 VAC, 50/60Hz. 20VA (nominal)

Dimensions

310mm(w) x 121mm(h) x 200mm(d)

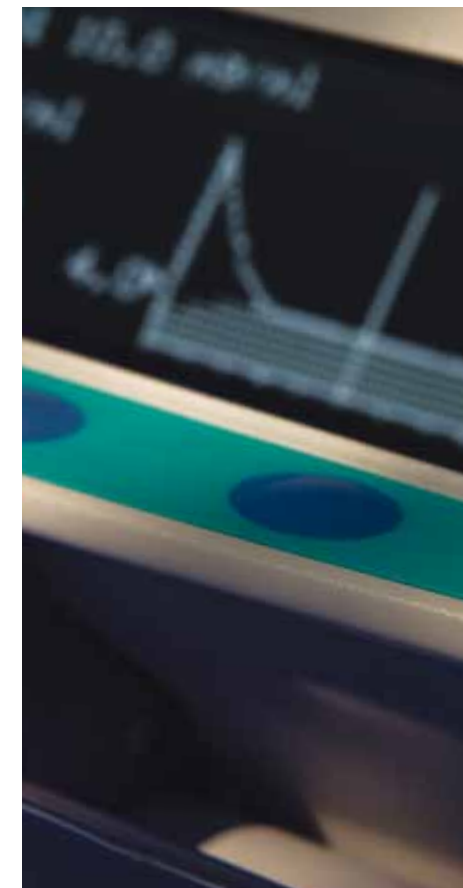
Weight (nominal)

2.7 Kg



Alaris® PK anaesthesia pump

Alaris® Products



<p>CareFusion UK The Crescent Jays Close Basingstoke Hampshire RG22 4BS United Kingdom Customer Services 0800 917 8776</p>	<p>CareFusion 14B George Bourke Drive Mt. Wellington Auckland New Zealand +64 9 270 2420 tel 0508 422734 freephone +64 9 270 6285 fax</p>	<p>CareFusion International Headquarters A-One Business Centre Zone d'activités Vers-la-Pièce no 10 1180 Rolle Switzerland +41 21 556 30 00 tel +41 21 556 30 99 fax</p>
<p>CareFusion Unit 3/167 Prospect Highway Seven Hills NSW 2147 Australia +61 2 9624 9000 tel +61 2 9624 9034 fax</p>	<p>CareFusion Unit 2 Oude Molen Business Park Oude Molen Road Ndabeni Cape Town 7405 South Africa +27 21 510 7562 tel +27 21 510 7567 fax</p>	<p>CareFusion PO Box 5527 Dubai United Arab Emirates Tel: +9714 2822 842 Fax: +9714 2822 914</p>

© 2011 CareFusion Corporation or one of its subsidiaries. All rights reserved.
 Alaris and SmartSite are registered trademarks of CareFusion Corporation or one of its subsidiaries.
 0000CF00155 Issue 4



The Alaris® PK syringe pump

Now you can choose the latest Pharmacokinetic (PK) models that suit you and your patient best. In addition to the original Marsh model, the Alaris® PK syringe pump offers a choice of models with Plasma and Effect Site targeting capability (see drug prescribing information). We also offer 2 models for children.

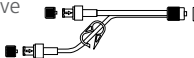
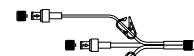

The Alaris® PK syringe pump user interface has been developed in cooperation with leading European anaesthesiologists. Set up is the same every time and very easy to use. Unnecessary features can be disabled. Only relevant information is shown. All set up parameters are displayed on one screen.

Designed for the way you work



Alaris® PK syringe pump Safety Disposables

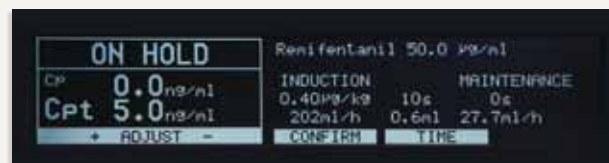
Refer to Disposables Catalogue for the full range of illustrated products

TIVA sets	
500-002	<ul style="list-style-type: none"> • Y extension 2 way • 1 Back-check valve • 15cm • 1 Anti-siphon valve 
500-003	<ul style="list-style-type: none"> • Y extension 3 way • 1 Back-check valve • 2 Anti-siphon valves • 15cm 
500-012	<ul style="list-style-type: none"> • Y extension 2 way extension set • 220cm • 1 Anti-siphon valve • 1 Back-check valve
500-013	<ul style="list-style-type: none"> • Y extension 3 way extension set • 190cm • 1 Back-check valve • 2 Anti-siphon valve
MF2270	<ul style="list-style-type: none"> • 3 way set • 3 Back-check valves • 2 Anti-siphon valves • 2 Roberts clamps • 5.2ml* • 210cm
MF2271	<ul style="list-style-type: none"> • 2 way set • 2 Back-check valves • Anti-siphon valve • Roberts clamp • 3.0ml* • 210cm
MF2290	<ul style="list-style-type: none"> • 3 way set • 3 Back-check valves • 2 Anti-siphon valve • Roberts clamps • 4.3ml* • 209cm
MF2291	<ul style="list-style-type: none"> • 2 way set • 2 Back-check valves 2.3ml* • 209cm
MF2292E	<ul style="list-style-type: none"> • TIVA 3 way set • SmartSite® Valve • 3.9ml* • 210cm • 4 Back-check valves • 2 Anti-siphon valves
Y connectors	
20038E7D	<ul style="list-style-type: none"> • Y connector 3 way • 3 SmartSite® Valves • 3 Slide clamps • 0.4ml* • 12.7c
20061E7D	<ul style="list-style-type: none"> • Y connector 2 way • 2 SmartSite® Valves • 2 Slide clamps • 1.42ml* • 17.8cm • 2 Back-check valves
20062E7D	<ul style="list-style-type: none"> • Y connector 3 way • 3 SmartSite® Valves • Back-check valve • 3 Slide clamps • 1.7ml* • 19cm
MF2233E	<ul style="list-style-type: none"> • 3 way extension set • SmartSite® Valve • 0.6ml* • 10cm • 2 Back-check valves 
Extension lines	
G40615	<ul style="list-style-type: none"> • Extension line • Low sorbing • 1.3ml* • 150cm
G40620	<ul style="list-style-type: none"> • Extension line • Low sorbing • 1.7ml* • 200cm
G40720	<ul style="list-style-type: none"> • Extension line • Roberts clamp • Low sorbing • 1.4ml* • 206cm
MF22256	<ul style="list-style-type: none"> • Extension set • Lipid resistant • 2.0ml* • 205cm
MF2280E	<ul style="list-style-type: none"> • Three way tap with extension and SmartSite® valve • Lipid resistant • 1ml* • 10cm
MF2284	<ul style="list-style-type: none"> • 3 way tap (blue) with extension • Lipid resistant • 7.2ml* • 100cm
MF2285	<ul style="list-style-type: none"> • 3 way tap (blue) with extension • Lipid resistant • 8.6ml* • 120cm
Accessories	
2000E7D	<ul style="list-style-type: none"> • SmartSite® Valve • 0.1ml* • 2.5cm (2000E in Australia/New Zealand)
2203E-0006	<ul style="list-style-type: none"> • SmartSite® Valve vial access device (13mm vials) • 0.09ml* • 3.5cm
2205E-0006	<ul style="list-style-type: none"> • SmartSite® Valve vial access device (20mm vials) • 0.09ml* • 3.5cm
2300E	<ul style="list-style-type: none"> • Bag spike • Unvented • SmartSite® Valve 0.47ml* • 8.33cm
2309E-0006	<ul style="list-style-type: none"> • Bag spike • Unvented • SmartSite® Valve Backcheck valve • 0.86ml* • 13.35cm
MF22594E	<ul style="list-style-type: none"> • Dispensing pin • SmartSite® Valve • 0.2µm hydrophobic filter • 0.1ml* • 6.7cm
30602N	<ul style="list-style-type: none"> • IVAC® 50 ml Syringe



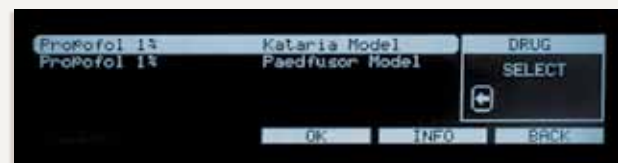
TCI & TIVA Modes

Choose a TCI model or one of up to 1000 normal drug protocols.



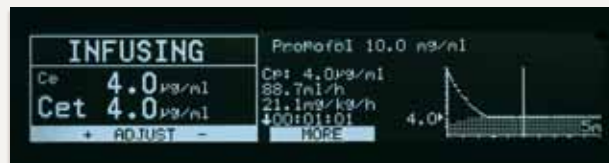
Variable Induction Times

Adjust the induction time if required.



TCI models for children

From 1 year and 5kg.



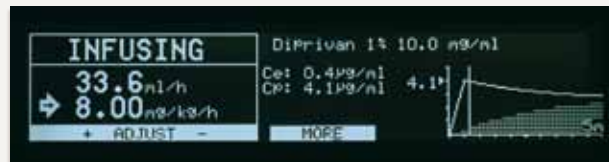
Infusion Status Display

One large display shows you all necessary information.



Patient Set Up Display

All patient parameters are set up in one screen.

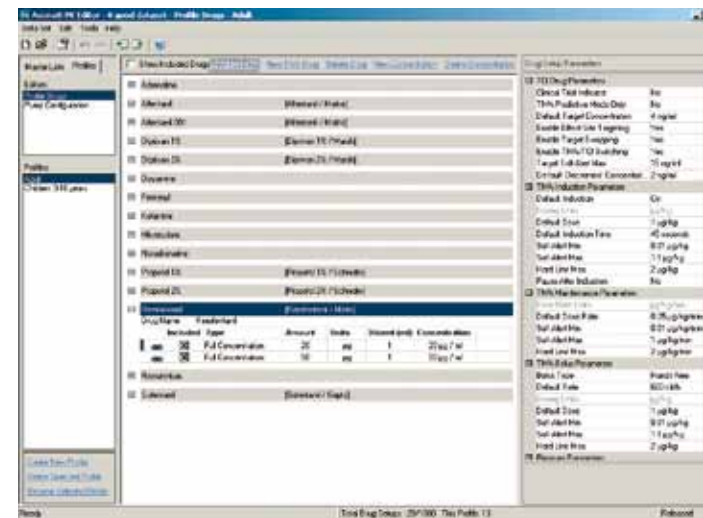


Normal TIVA mode with TCI predictions

Easy to switch from TCI to TIVA mode and back.

Alaris® PK Editor Software

Configure the pump the way you want using an innovative PC tool. Create profiles with your own name, type of operations and type of patient. Select from several TCI models for different drugs. Enable TCI predictions on plasma and effect concentrations in TIVA mode. Create up to 1000 drug protocols in normal TIVA mode and set safety limits for almost any parameter.



Please contact us for more information about the Alaris® PK Editor Software and System Integration capability.

System Integration Capability

When docked to an Alaris® Gateway Workstation, your complete infusion system has the capability to link to Patient Data Management Systems (PDMS) and Hospital Information Systems (HIS) through our open network architecture.



* Priming volume. Illustrations are only to be used as a guide and do not necessarily depict a true representation of the product.