



Certificate of Analysis

R&D

Client Information:

3 TALL PINES LLC
W6326 COUNTY ROAD Z
PLYMOUTH
PLYMOUTH, WI 53073

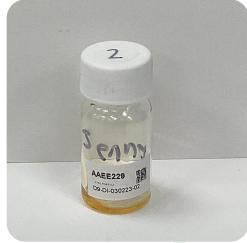
Batch # D9-DI-030223-02
Batch Date: 2023-03-02
Extracted From: Hemp

Test Reg State: Florida

Order # 3TA230303-030001
Order Date: 2023-03-03
Sample # AAEE229

Sampling Date: 2023-03-07
Lab Batch Date: 2023-03-07
Completion Date: 2023-03-13

Initial Gross Weight: 18.982 g



Product Image



Potency
Tested



HHCP
Tested

**Delta 8/Delta 10 Potency 13 -
(LCUV) + Potency 23 (LCUV)**

Specimen Weight: 51.420 mg

Analyte	Dilution (1:n)	LOD (%)	LOQ (%)	Result (mg/g)	(%)
Delta-8 THC	1000.000	2.60E-5	0.0015	120.3900	12.0390
CBN	1000.000	1.40E-5	0.0015	49.5000	4.9500
CBG	1000.000	2.48E-4	0.0015	34.3400	3.4340
Delta9-THCP	10.000	1.17E-5	0.0012	8.9320	0.8932
CBT	10.000	2.00E-4	0.0015	2.5930	0.2593
Delta-8 THCv	10.000	4.00E-5	0.0015	1.3700	0.1370
CBNA	10.000	9.50E-5	0.0015	0.8220	0.0822
Delta8-THCP	10.000	3.75E-4	0.0015	0.4680	0.0468
CBC	100.000	1.80E-5	0.0015	<LOQ	<LOQ
CBD	1000.000	5.40E-5	0.0015	<LOQ	<LOQ
CBDA	1000.000	1.00E-5	0.0015	<LOQ	<LOQ
CBDV	1000.000	6.50E-5	0.0015	<LOQ	<LOQ
CBGA	1000.000	8.00E-5	0.0015	<LOQ	<LOQ
Delta-10 THC	1000.000	3.00E-6	0.0015	<LOQ	<LOQ
Delta-9 THC	100.000	2.80E-5	7.5E-5	<LOQ	<LOQ
Delta6a10a-THC	1000.000	8.47E-5	0.0015	<LOQ	<LOQ
THCA-A	1000.000	3.20E-5	0.0015	<LOQ	<LOQ
THCV	1000.000	7.00E-6	0.0015	<LOQ	<LOQ
CBCA	10.000	1.07E-4	0.0015	<LOQ	<LOQ
CBDVA	10.000	1.40E-5	0.0015	<LOQ	<LOQ
CBL	10.000	3.50E-5	0.0015	<LOQ	<LOQ
Delta-8 THC-O Acetate	10.000	2.70E-5	0.003	<LOQ	<LOQ
Delta-9 THC-O Acetate	10.000	7.70E-5	0.003	<LOQ	<LOQ
Exo-THC	10.000	2.30E-4	0.0015	<LOQ	<LOQ
THCVA	10.000	4.70E-5	0.0015	<LOQ	<LOQ
Total Active CBD	1000.000			<LOQ	<LOQ
Total Active THC	1000.000			<LOQ	<LOQ

Tested
SOP13.002 (LCUV)

Potency Summary

Total Delta 8 12.039% <LOQ	Total Delta 10 None Detected
Total HHC 71.062% <LOQ	Total Active THC None Detected
Total Active CBD None Detected	Total CBG 3.434% <LOQ
Total CBN 5.022% <LOQ	Other Cannabinoids 1.336% <LOQ
Total Cannabinoids 92.904% <LOQ	

Summary Results determined from two distinct Potency Tests - Delta 8/Delta 10 Potency 13 - (LCUV) + Potency 23 (LCUV)

Aixia Sun

Aixia Sun Lab Director/Principal Scientist
D.H.Sc., M.Sc., B.Sc., MT (AAB)



Definitions and Abbreviations used in this report: Total Active CBD = CBD + (CBD-A * 0.877), *Total CBDV = CBDV + (CBDVA * 0.87), Total Active THC = THCA-A * 0.877 + Delta 9 THC, Total THCv = THCv + (THCVA * 0.87), CBG Total = (CBGA * 0.877) + CBG, CBN Total = (CBNA * 0.877) + CBN, Total CBC = CBC + (CBCA * 0.877), Total THC-O-Acetate = Delta 8 THC-O-Acetate + Delta 9 THC-O-Acetate, Total THCP = Delta8-THCP + Delta9-THCP, Other Cannabinoids Total = Total Cannabinoids - All the listed cannabinoids on the summary section, Total Detected Cannabinoids = Delta6a10a-THC + Delta8-THC + Total CBN + CBT + CBE + Delta8-THCV + Total CBG + Total CBD + Total THCv + CBL + Total THC + Total CBC + Total CBDV + Delta10-THC + Total THC-O-Acetate + Total THCP. (mg/ml) = Milligrams per Milliliter, LOQ = Limit of Quantitation, LOD = Limit of Detection, Dilution = Dilution Factor (ppb) = Parts per Billion, (%) = Percent, (cfu/g) = Colony Forming Unit per Gram (cfu/g) = Colony Forming Unit per Gram, μg/g = Microgram per Gram (ppm) = Parts per Million, (ppm) = (μg/g), (aw) = aw (area ratio) = Area Ratio, (mg/kg) = Milligram per Kilogram, Passed - Analyte/microbe is non-detected or at the level below the action limit, Failed - Analyte/microbe is at the level that equal or above the action limit, *Measurement of Uncertainty = +/- 10%

This report shall not be reproduced, without written approval, from ACS Laboratory. The results of this report relate only to the material or product analyzed. Test results are confidential unless explicitly waived otherwise. ACS Laboratory is accredited to the ISO/IEC 17025:2017 Standard. The tests and/or calibrations marked with an "****" are not ISO/IEC 17025:2017 accredited test results.



Certificate of Analysis

R&D

Client Information:

3 TALL PINES LLC
W6326 COUNTY ROAD Z
PLYMOUTH
PLYMOUTH, WI 53073

Batch # D9-DI-030223-02
Batch Date: 2023-03-02
Extracted From: Hemp

Test Reg State: Florida

Order # 3TA230303-030001
Order Date: 2023-03-03
Sample # AAEE229

Sampling Date: 2023-03-07
Lab Batch Date: 2023-03-07
Completion Date: 2023-03-13

Initial Gross Weight: 18.982 g

HHCP ***

Specimen Weight: 51.420 mg

Dilution Factor: 5000.000

Analyte	LOD (%)	LOQ (%)	Result (mg/g)	(%)	Analyte	LOD (%)	LOQ (%)	Result (mg/g)	(%)
(9R)-HHC	3.1100E-7	7.5E-5	473.0000	47.3	9(S)-HHCP	2.5500E-6	7.5E-5	<LOQ	<LOQ
(9S)-HHC	8.7400E-7	7.5E-5	237.0000	23.7	Delta-9 THC	2.8000E-5	7.5E-5	<LOQ	<LOQ
(±)-9β-hydroxy-HHC	4.5800E-7	7.5E-5	0.4400	0.044	Total HHCP			710.6190	71.0619
9(R)-HHCP	3.0900E-6	7.5E-5	0.1790	0.0179					

Tested

SOP13.050 (LCMS)

Aixia Sun

Aixia Sun Lab Director/Principal Scientist
D.H.Sc., M.Sc., B.Sc., MT (AAB)



Definitions and Abbreviations used in this report: Total Active CBD = CBD + (CBD-A * 0.877), *Total CBDV = CBDV + (CBDVA * 0.87), Total Active THC = THCA-A * 0.877 + Delta 9 THC, Total THC = THCV + (THCVA * 0.87), CBG Total = (CBGA * 0.877) + CBG, CBN Total = (CBNA * 0.877) + CBN, Total CBC = CBC + (CBCA * 0.877), Total THC-O-Acetate = Delta 8 THC-O-Acetate + Delta 9 THC-O-Acetate, Total THCP = Delta8-THCP + Delta9-THCP, Other Cannabinoids Total = Total Cannabinoids - All the listed cannabinoids on the summary section, Total Detected Cannabinoids = Delta6a10a-THC + Delta8-THC + Total CBN + CBT + CBE + Delta8-THCV + Total CBG + Total CBD + Total THCV + CBL + Total THC + Total CBC + Total CBDV + Delta10-THC + Total THC-O-Acetate + Total THCP. (mg/ml) = Milligrams per Milliliter, LOQ = Limit of Quantitation, LOD = Limit of Detection, Dilution = Dilution Factor (ppb) = Parts per Billion, (%) = Percent, (cfu/g) = Colony Forming Unit per Gram (cfu/g) = Colony Forming Unit per Gram, , LOD = Limit of Detection, (µg/g) = Microgram per Gram (ppm) = Parts per Million, (ppm) = (µg/g), (aw) = aw (area ratio) = Area Ratio, (mg/Kg) = Milligram per Kilogram, Passed - Analyte/microbe is non-detected or at the level below the action limit, Failed - Analyte/microbe is at the level that equal or above the action limit, *Measurement of Uncertainty = +/- 10%

This report shall not be reproduced, without written approval, from ACS Laboratory. The results of this report relate only to the material or product analyzed. Test results are confidential unless explicitly waived otherwise. ACS Laboratory is accredited to the ISO/IEC 17025:2017 Standard. The tests and/or calibrations marked with an "****" are not ISO/IEC 17025:2017 accredited test results.