



PRODUCT SHEET

2021 05 VER.02



GOVERNOR

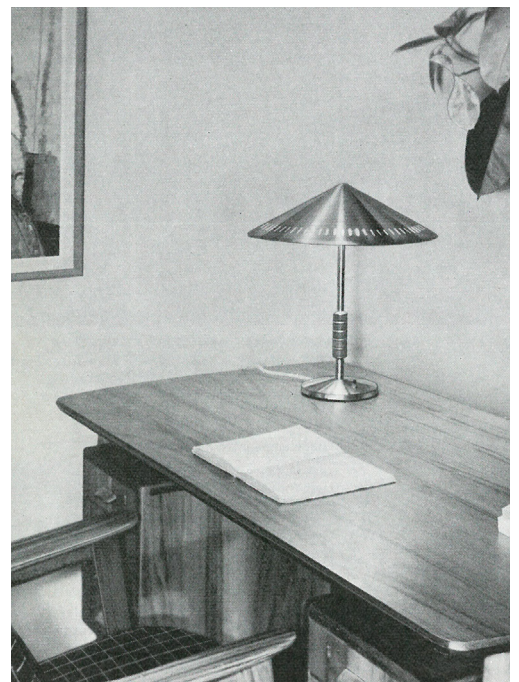
by Bent Karlby ¹⁹⁵⁶

GOVERNOR is a sophisticated mid-century lamp from 1956 that proved to carry an enduring appeal with design lovers around the world. This lamp radiates a certain international flair. It is confident and a premium piece of lighting design that still has the power to impress. GOVERNOR is crafted from solid brass and walnut wood, providing efficient downlight while giving a pleasantly diffused light from the reflective brass shade. When lit, the peepholes around the edge form a decorative light pattern.



PRODUCT SHEET

2021 05 VER.02



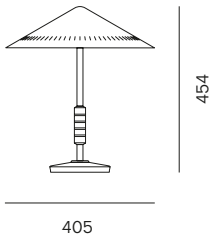
KNOWN AS THE BANKER'S TABLE LAMP

GOVERNOR is a classic mid-century lamp from 1956 that radiates a certain international flair. Back in the days, the table lamp was known as the banker's lamp because of its expressive confidence and premium quality. Today, it is a lighting design that still has the power to impress.

Pentti Karhunen



GOVERNOR TABLE

**Category**

Table

Type of light

Direct

Purpose

Task

Materials

Solid brass

Walnut

Colours

Brass

Weight

3,9 kg

Direction of light source

Horizontal

Light source

Two bulbs needed

Not included

Recommended bulb

Philips LED 4.3W

470 lumen

Socket size

2 x E27

Max wattage

60 W

Cord

Black plastic

w/ switch

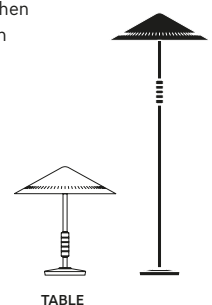
2 m

See full product description at
lyfa.com/collections/governor**COLOURS****CONCEPT AND CRAFTSMANSHIP**

GOVERNOR is available as a table lamp and as a classic upright floor lamp with an easy-to-reach switch on its base. The shade, stem, and base are all made from matt brass, adding a luxurious solid feel to the lamp. The beautiful decorative handle is crafted from walnut with brass inlays.

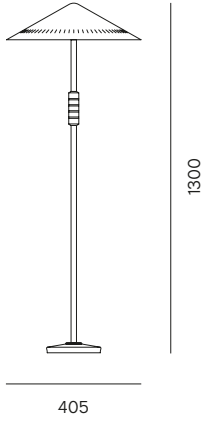
LIGHTSCAPE

GOVERNOR emits a functional and glare-free downlight from its two light sources. The perforated shade allows glimmers of decorative light to escape, while subtly illuminating the brass surface when the light is on. Combined with its warm materials, GOVERNOR truly creates a cozy atmosphere in the room.





GOVERNOR FLOOR

**Category**

Floor

Type of light

Direct

Purpose

Task

Materials

Solid brass

Walnut

Colours

Brass

Weight

7,9 kg

Direction of light source

Horizontal

Light source

Two bulbs needed

Not included

Recommended bulb

Philips LED 4.3W

470 lumen

Socket size

2 x E27

Max wattage

60 W

Cord

Black plastic

w/ switch

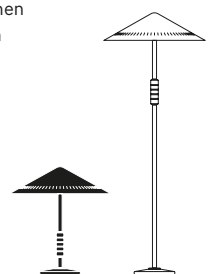
2 m

See full product description at
lyfa.com/collections/governor**COLOURS****CONCEPT AND CRAFTSMANSHIP**

GOVERNOR is available as a table lamp and as a classic upright floor lamp with an easy-to-reach switch on its base. The shade, stem, and base are all made from matt brass, adding a luxurious solid feel to the lamp. The beautiful decorative handle is crafted from walnut with brass inlays.

LIGHTSCAPE

GOVERNOR emits a functional and glare-free downlight from its two light sources. The perforated shade allows glimmers of decorative light to escape, while subtly illuminating the brass surface when the light is on. Combined with its warm materials, GOVERNOR truly creates a cozy atmosphere in the room.



FLOOR



LIGHTSCAPE GOVERNOR

DIRECT LIGHTING

Direct lighting is focused illumination with an exposed light source. It enhances the visibility and directs the light to where it is needed. By highlighting objects and surfaces, direct lighting is useful for specific purposes, like reading a book or prepping food in the kitchen. Choosing the correct light source is vital to avoid glare and lighting that is too harsh.

INDIRECT LIGHTING

Indirect lighting is ideal for creating an ambient setting as illumination relies on reflected, indirect light from the source. The light is emitted in different directions, which adds a delicate brightness, while the concealed light source ensures a glare-free experience. Choosing the correct light source is important to provide a sufficient level of illumination.

DIFFUSED LIGHTING

Diffused lighting is non-directional; a soft, scattered light that is not directed at particular objects or surfaces. The light passes through a translucent surface, creating a softer appearance that serves well as overall room illumination or to create an ambient setting. Choosing the correct light source is essential to avoid unwanted patterns on the illuminated surfaces.


PURPOSE

Lighting a room is all about a comfortable level of illumination, which is the result of a complex interplay between the room, atmosphere, light, and form. Different types of light entail different purposes. Based on our collection, we differentiate between three distinctive purposes: task, ambient and decorative lighting.

DIRECT

INDIRECT

DIFFUSED

TASK

A supportive light to better accomplish a task or specific activity

AMBIENT

An overall, soft light to set or improve the atmosphere of the room

DECORATIVE

A delicate light to draw attention and add distinction to a room