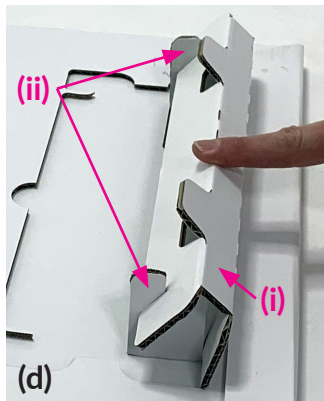


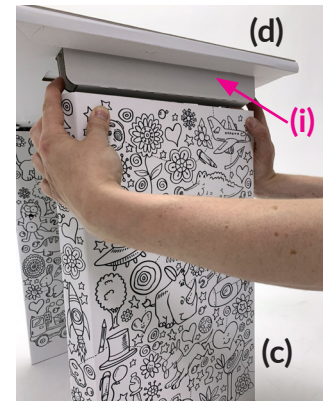
(a) DIVIDER 1 (b) DIVIDER 2 (c) LEGS (d) TOP
(e) STOOL 1 (f) STOOL 2



Lift up (i) and the small panels (ii) underneath (d) TOP. Lock slots together. Repeat on other side



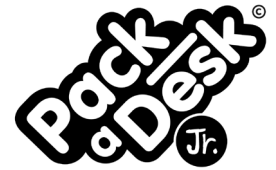
Stand up (C) LEGS and pull outwards as shown



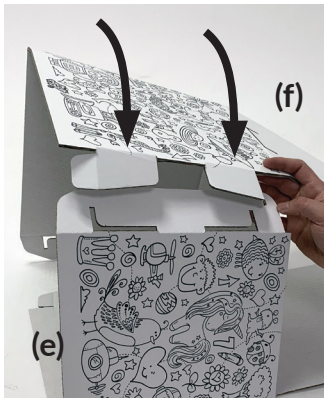
Insert the assembled sections from (d) TOP into the edges of (c) LEGS



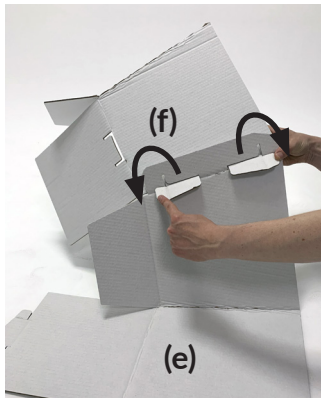
Assembled (c) LEGS and (d) TOP should replicate the image above



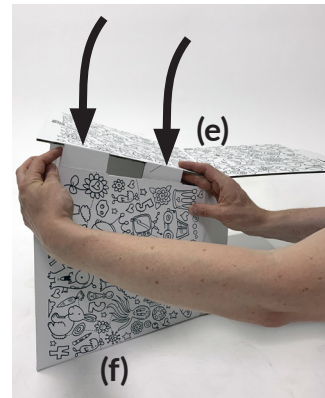
*** ASSEMBLY FOR ADULTS ONLY DUE TO POTENTIAL SHARP EDGES ***



Take (f) STOOL 2 and insert tabs into the slots on (e) STOOL 1



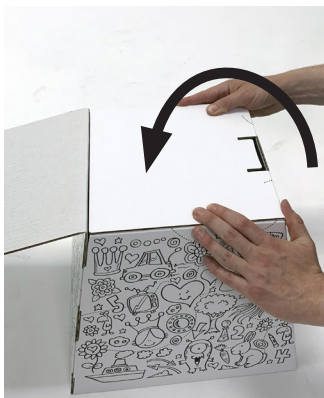
Ensure tabs are opened up on the inside to secure sections



Insert final tabs on (e) STOOL 1 into the slots on (f) STOOL 2



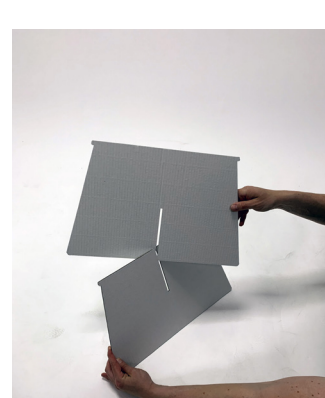
Fold over the two smaller panels on the top of the stool



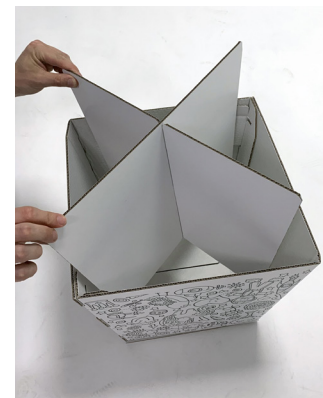
Next fold over the large panel without any graphics on



Finally fold over the remaining large panel with graphics, and insert the tab into the slot. Reach inside and open the tabs



Slot together (a) DIVIDER 1 and (b) DIVIDER 2 as shown above



Turn the stool upside down and insert the assembled dividers into the corners and push firmly



Final Assembled Pack a Desk & Stool
The top of the desk can be removed for storage if required