



JSPORT Performance Accessories
 310 N. Indian Hill Blvd. Claremont, CA 91711
 Phone/Fax: 866.343.5510

2017-2022 HONDA CR-V

PART #	DESCRIPTION
13-004	1.5" FRONT - 3/4" REAR LIFT KIT

COMPONENTS INCLUDED	
(2) 17-UP CR-V FRONT STRUT SPACER (2) 17-UP CR-V REAR SHOCK SPACER (2) 17-UP CR-V REAR COIL SPACER (2) 17-UP CR-V REAR SWAY BAR DROP	(4) M8 X 1.25 X 70MM BOLT (4) M8 X 1.25 X 50MM BOLT (1) HARDWARE KIT
HARDWARE INCLUDED	
HARDWARE KIT	
(6) 3/8-16 X 1.000 BOLT	(6) 3/8 SPLIT LOCK WASHER
TOOLS REQUIRED	
JACK JACK STANDS TORQUE WRENCH PLIERS FLATHEAD SCREWDRIVER COIL SPRING COMPRESSOR	9/16" SOCKET / WRENCH 5MM ALLEN WRENCH 10MM SOCKET / WRENCH 13MM SOCKET / WRENCH 14MM SOCKET / WRENCH 17MM SOCKET / WRENCH
TECH NOTES	
<p>1. FRONT STRUT SPACER INSTALLATION TIME MAY BE REDUCED BY PUSHING DOWN ON THE LOWER CONTROL ARM WITH THE UPPER MOUNT DISCONNECTED IN ORDER TO SLIDE THE SPACER BETWEEN THE BUCKET AND THE STRUT. A SHORT 14MM WRENCH IS REQUIRED TO TIGHTEN THE SPACER TO THE STRUT WHILE STILL IN THE BUCKET. THIS ELIMINATES THE NEED TO REMOVE THE STRUT FROM THE VEHICLE.</p> <p>2. REAR COIL SPACER INTALLATION MAY BE EASIER WITH THE USE OF A COIL SPRING COMPRESSOR.</p>	



WARNING!

**** READ ALL INSTRUCTIONS THOROUGHLY FROM START TO FINISH BEFORE BEGINNING INSTALLATION! IF THESE INSTRUCTIONS ARE NOT PROPERLY FOLLOWED SEVERE FRAME, SUSPENSION AND TIRE DAMAGE MAY RESULT TO THE VEHICLE!**

**** JSPORT RECOMMENDS THAT YOU EXERCISE EXTREME CAUTION WHEN WORKING UNDER A VEHICLE THAT IS SUPPORTED WITH JACK STANDS.**

**** JSPORT RECOMMENDS ALL INSTALLATION TO BE PERFORMED BY A PROFESSIONAL SHOP/SERVICE TECHNICIAN. PRODUCT FAILURE CAUSED BY IMPROPER INSTALLATION WILL NOT BE COVERED UNDER ICON'S WARRANTY POLICY.**

INSTALLATION

FRONT SPACER INSTALLATION:

Using a properly rated jack, raise the vehicle and support the frame rails or factory recommended lifting points with jack stands. Ensure jack stands are secure and set properly before lowering the jack. NEVER WORK UNDER AN UNSUPPORTED VEHICLE. Remove the wheels.

1. Remove the brake line bracket from the strut using a 10mm. Remove the plastic ABS clip from the strut using pliers or a flathead screwdriver. [FIGURE 1 & 2]

FIG.1



FIG.2



2. Remove the clamping bolt from the steering knuckle casting using a 17mm. [FIGURE 3]

FIG.3

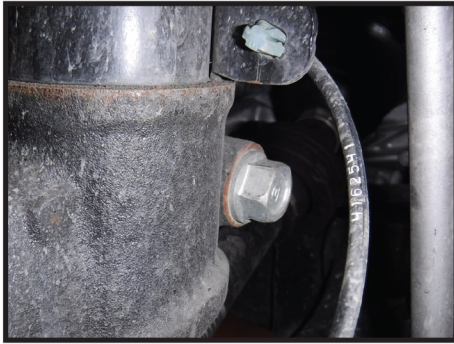


FIG.4

3. Disconnect the sway bar link from the strut using a 14mm wrench and a 5mm allen wrench. [FIGURE 4]

4. Use a 14mm to remove the 3 nuts from the upper strut mount.

5. While pushing the lower control arm down, lift the strut up and out of the knuckle. Be careful not to over extend the CV joints.

6. With the strut removed, install the spacer using the factory nuts and torque to factory spec. Rotate the upper mount 180 degrees so the new hole pattern will line up when installing.

7. While pushing down on the lower control arm, slide the strut into the knuckle. Do not overextend the CV joints. [FIGURE 5]

FIG.5



FIG.6

8. Install the clamp bolt and torque to factory spec using a 17mm. [FIGURE 6]

9. Clip the ABS line into the strut and connect the brake line bracket using a 10mm. [FIGURE 7 & 8]

FIG.7



FIG.8

10. Connect the sway bar link to the strut using a 14mm and a 5mm allen wrench. [Torque to factory spec] [FIGURE 9]

FIG.9



FIG.10

11. Mount the spacer to the coil bucket using the supplied 3/8" hardware. [Torque to 35 ft-lbs] [FIGURE 10]

REAR SPACER INSTALLATION:

12. Remove the sway bar link from the lower control arm using a 14mm and a 5mm allen wrench. [FIGURE 11]

FIG.11



FIG.12



13. Remove the bolt from the lower shock mount using a 17mm. [FIGURE 12]

14. Use a floor jack to lift the lower control arm enough to slide the shock out of its mount. Remove the shock from the upper mount using a 13mm socket with long extension. [FIGURE 13]

FIG.13



FIG.14



15. Mount the shock using the shock spacer and supplied M8 X 1.25 X 70MM bolts. Torque to factory spec using a 13mm. [FIGURE 14]

16. Push down on the knuckle enough to slide the coil out of its mounts. Place the coil spacer on top of the upper coil isolator and install. This will be easier if the coil is preloaded slightly with the use of a coil spring compressor. Always use caution when compressing springs. Make sure the locator on the lower coil isolator is properly installed in the lower control arm. [FIGURE 15]

FIG.15



FIG.16



17. Lift the lower control arm enough to connect the shock to the knuckle using a 17mm. [Torque to factory spec] [FIGURE 16]

18. Remove the sway bar from its mounts using a 13mm. [FIGURE 17]

FIG.17



FIG.18



19. Mount the sway bar with the sway bar spacers using the supplied M8x1.25 bolts and a 13mm. [Torque to factory spec] [FIGURE 18]

20. Connect the sway bar link to the lower control arm using a 14mm and a 5mm Allen. [Torque to factory spec] [FIGURE 17]

FIG.17



21. Reinstall the wheels/tires and lower the vehicle to the ground. [Torque lugs to factory spec]

22. Have the vehicle professionally aligned.

VERIFY ALL FASTENERS ARE PROPERLY TORQUED BEFORE DRIVING VEHICLE.

RETORQUE ALL NUTS, BOLTS AND LUGS AFTER 100 MILES AND PERIODICALLY THEREAFTER.

JSPORT PERFORMANCE ACCESSORIES LIMITED LIFETIME WARRANTY

JSPORT Performance Accessories warrants to the original retail purchaser who owns the vehicle on which the product was originally installed. JSPORT does not warrant the product for finish, alterations, modifications and/or installation contrary to JSPORT instructions. JSPORT products are not designed, nor are they intended to be installed on vehicles used in race applications, for racing purposes or for similar activities. (A "race" is defined as any contest between two or more vehicles, or a contest of one or more vehicles against the clock, whether or not such contest is for a prize). This warranty does not include coverage for police or taxi vehicles, race vehicles, or vehicles used for government or commercial purposes. Also excluded from this warranty are sales outside of the United States of America and Canada.

JSPORT Performance Accessories' obligation under this warranty is limited to the repair or replacement, at JSPORT's discretion, of the defective product. Any and all costs of removal, installation or re-installation, freight charges and incidental or consequential damages are expressly excluded from this warranty. Items that are subject to wear are not considered defective when worn and are not covered.

JSPORT Performance Accessories components must be installed as a complete kit as shown in our current application guide. Any substitutions or exemptions of required components will immediately void the warranty. Some finish damage may happen to parts during shipping and is not covered under warranty.

This warranty is expressly in lieu of all other warranties expressed or implied. This warranty shall not apply to any product that has been improperly installed, modified or customized subject to accident, negligence, abuse or misuse.