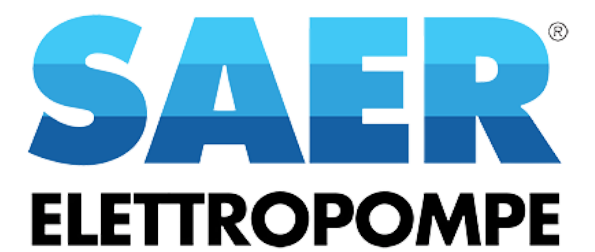
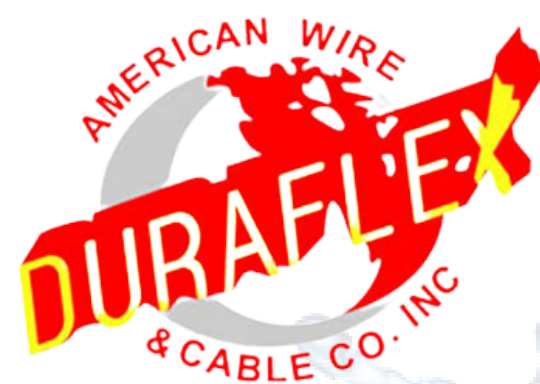


**PUMPS**



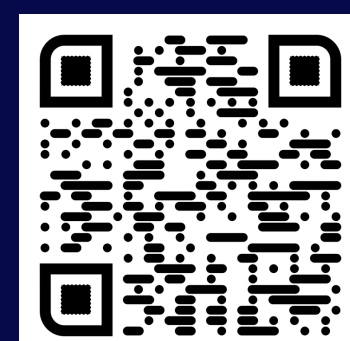
**MOTOR**

**ACCESSORIES**



**GENERATORS**

**CONTROLLERS**





## PUMPS

**GRUNDFOS** 

**GRUNDFOS**   
APPROVED DISTRIBUTOR

**GRUNDFOS**   
AUTHORISED  
SERVICE PARTNER

**GRUNDFOS**   
AUTHORISED  
SUB FACTORY



### SP/ SPA / SP-G

- submersible deep well
- ground water supply
- pressure boosting
- industrial application
- transfer system



### S/S VERTICAL INLINE PUMP

- cooling and air-conditioning
- water supply systems
- boiler feeding systems
- fire fighting systems
- transfer systems



### SPLIT CASE PUMP



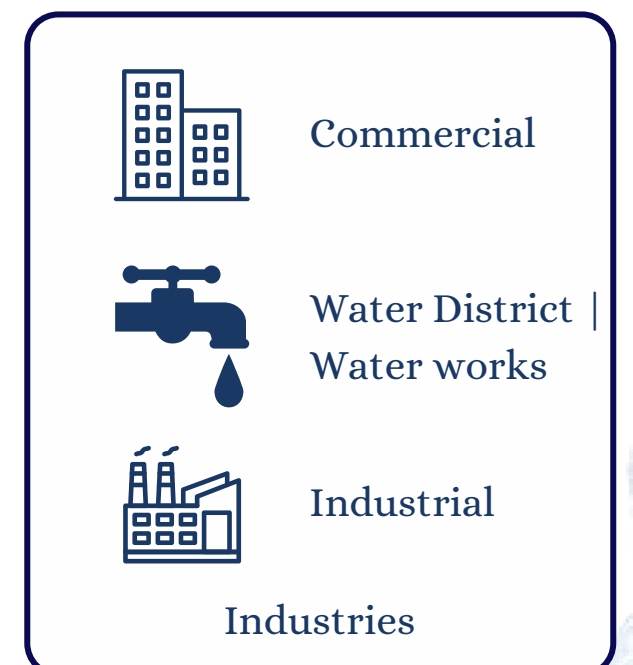
- condenser, chiller
- district heating systems
- air conditioning systems
- water supply systems
- fire fighting



### END SUCTION PUMP



- district heating plants
- air-conditioning systems
- cooling systems
- water supply systems
- transfer booster



### SUBMERSIBLE REWINDABLE MOTOR



- submersible motor for deepwell applications
- pressure boosting



### CONSTANT PRESSURE SYSTEM



- constant pressure system
- hydro pneumatic system



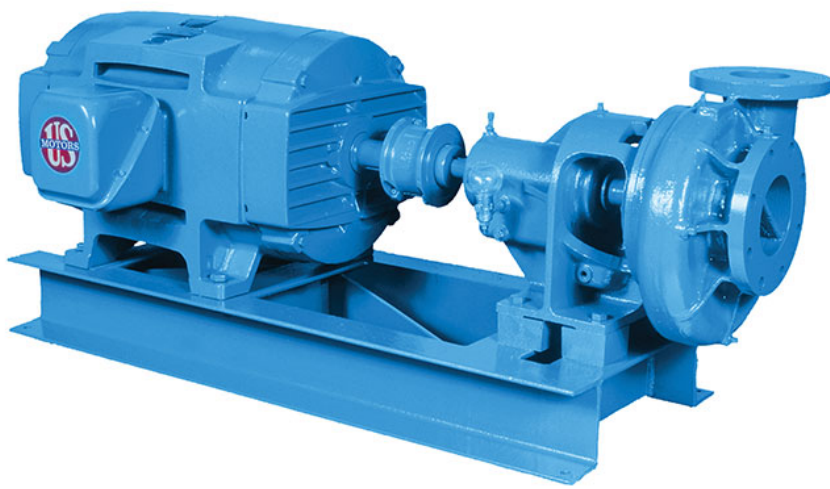
### DOSING PUMP



- chlorinator pump, washing systems, swimming pools, and process plants



FES



**END SUCTION PUMP COUPLED**



- transfer pump
- condenser pump
- chiller pump
- booster pump



**GISO - END SUCTION PUMP**



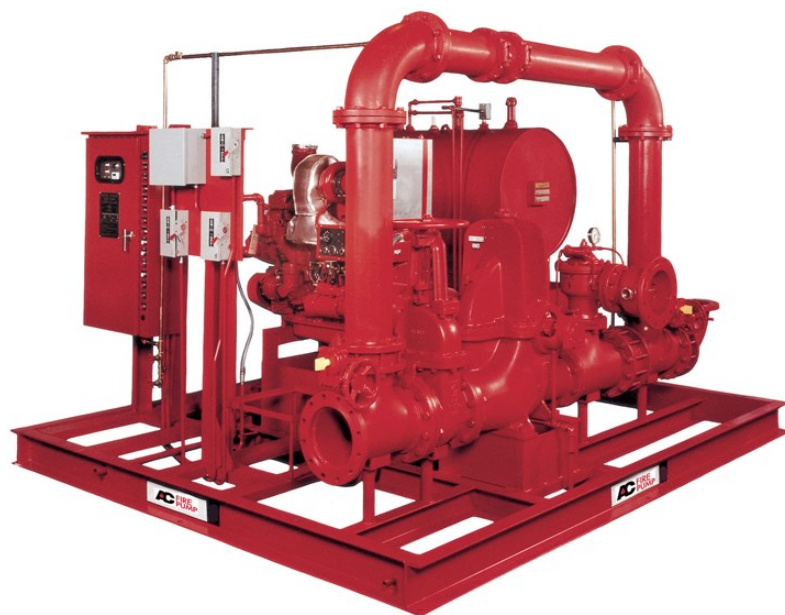
- booster pump
- transfer pump
- condenser/ chiller pump
- non-UL Fire Pump



**ESV - VERTICAL MULTI STAGE CENTRIFUGAL PUMPS**



- transfer pump
- booster pump



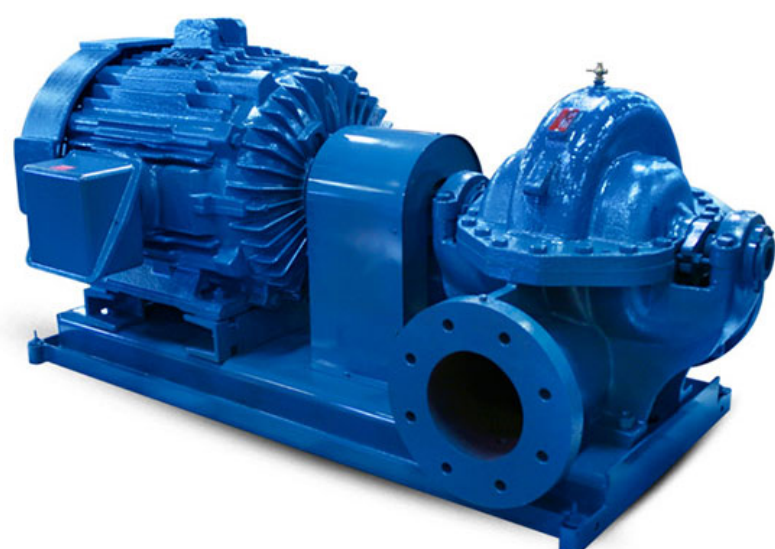
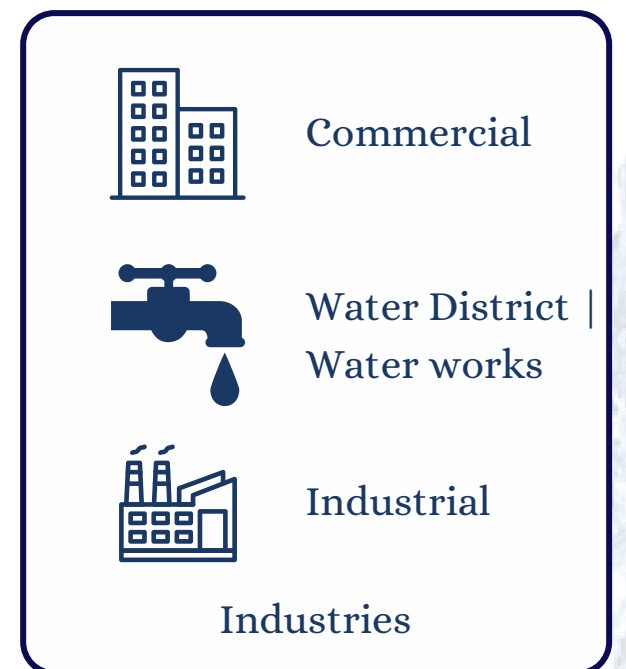
**AC FIRE PUMP**

- UL/FM Fire Pump System



**SEWAGE & WASTE WATER**

- sewage treatment plants
- drainage systems
- sump/elevator put
- aerator blower



**PACO END HORIZONTAL SPLIT PUMP**

- transfer pump



**SP/ SPA / SP-G**

- plumbing and HVAC pumps
- end suction pumps
- fire pump package system
- sump pumps
- multistage pumps
- domestic water booster systems



## CONTROLLERS

*Danfoss*

*Danfoss*  
**VLT | VAGON**



### FREQUENCY INVERTERS



- variable frequency drives
- soft starters



### DANFOSS VACON



- variable frequency drive

## MOTOR



**Franklin Electric**

### SUBMERSIBLE MOTOR



- submersible motor for deepwell applications
- pressure boosting



Commercial



Water District |  
Water works



Industrial

Industries

## GENERATORS

 **HEXAGEN**  
GENERATOR SET



### KVA GENERATOR



- 10KVA to 2000KVA Generator

## ACCESSORIES



**C.R.I PIPES** 

AMERICAN WIRE  
**DURAFLEX**  
& CABLE CO. INC. 