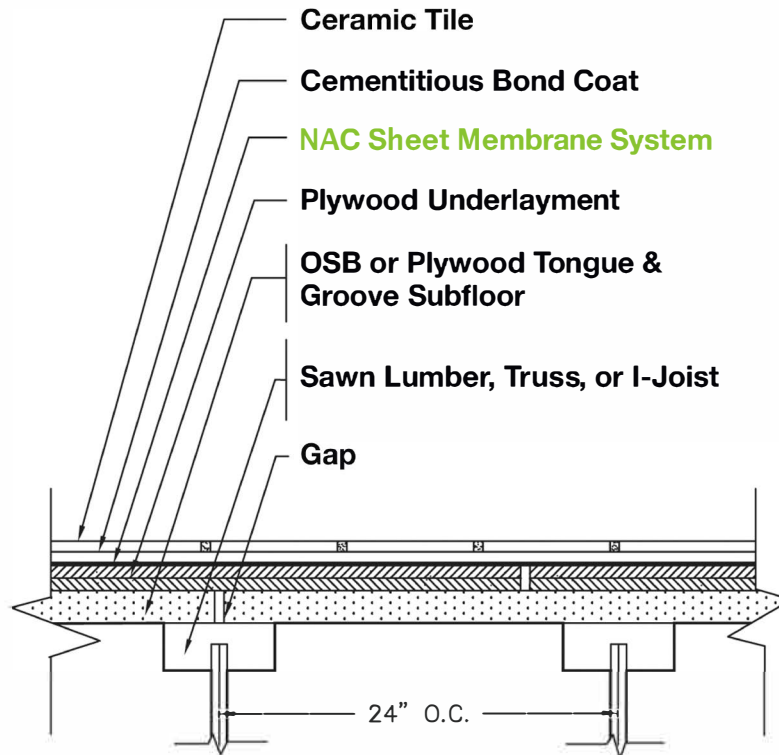


MEMBRANE OVER WOOD

JOIST SPACING 24" OR LESS



All NAC sheet membranes (ECB®, ECB® 75, Strataflex®, SAM® 3 and Super SAM® 125) may be used in this type of application for wood substrates in dry areas where the joist spacing is 24" on center or less.

All NAC sheet membrane systems require the use of the appropriate NAC Primer to ensure a permanent bond to the substrate.

For specification purposes, the NAC products used in this system are:

- NAC Sheet Membranes
- NAC Primer

Detail refers to F155 for wood substrates in dry areas where joist spacing is 24" on center or less. See current edition of the TCNA Handbook for additional guidelines.

Visit NACproducts.com or call 800-633-4622 for more information.



www.nacproducts.com