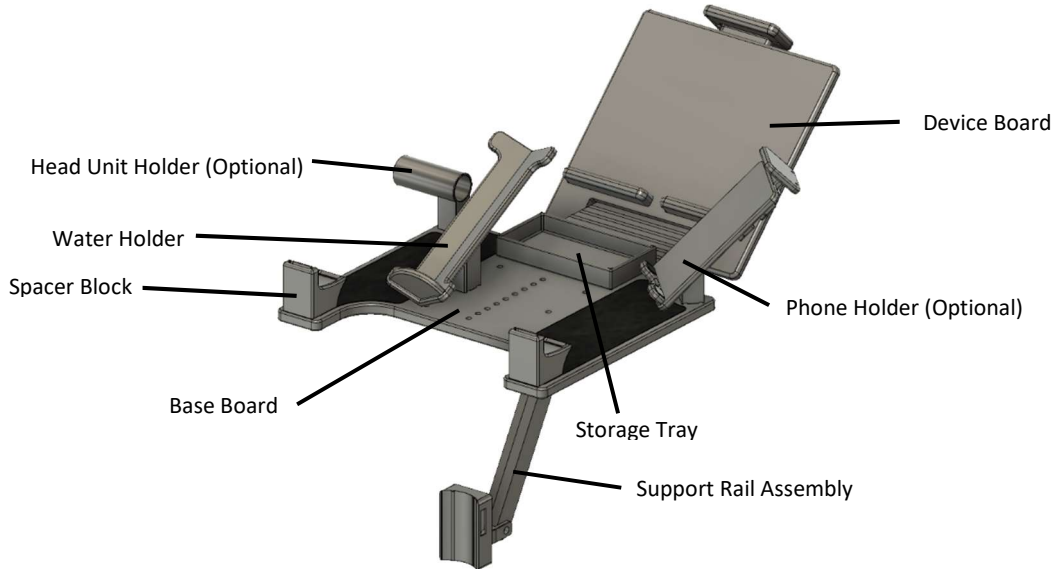


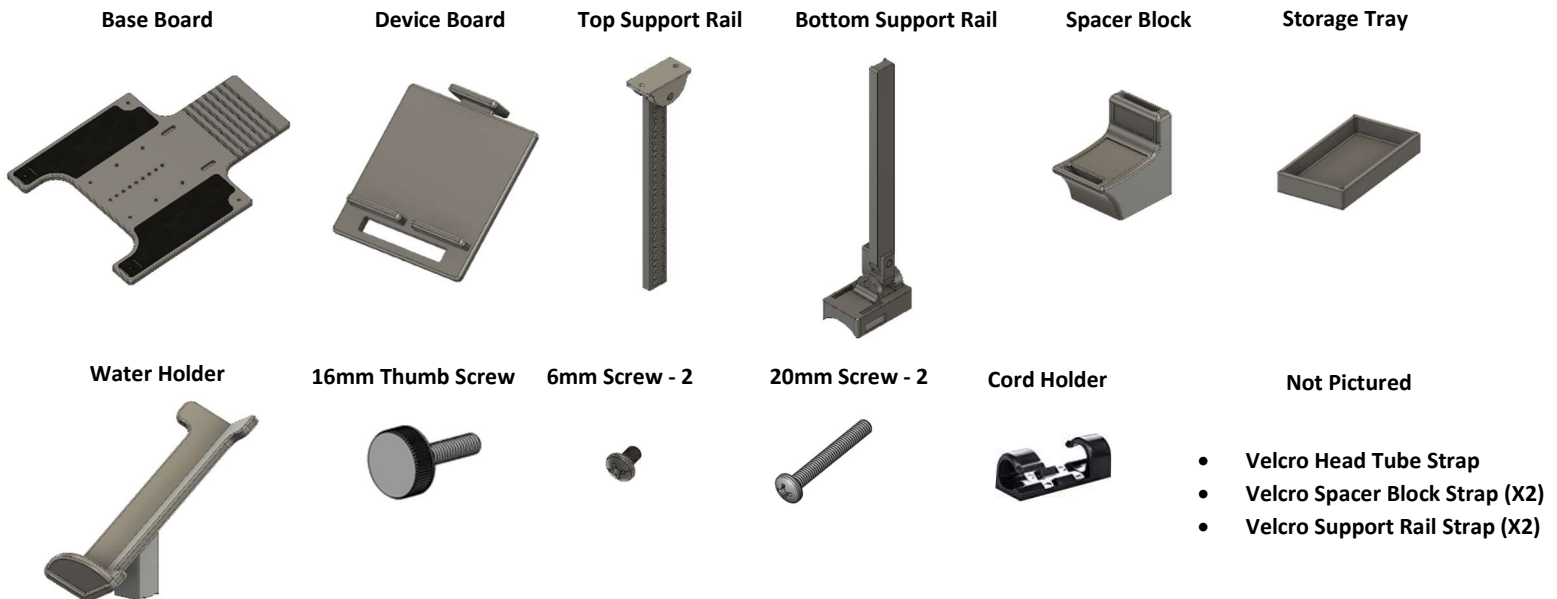


Aeroboard -R Instructions



Contents:

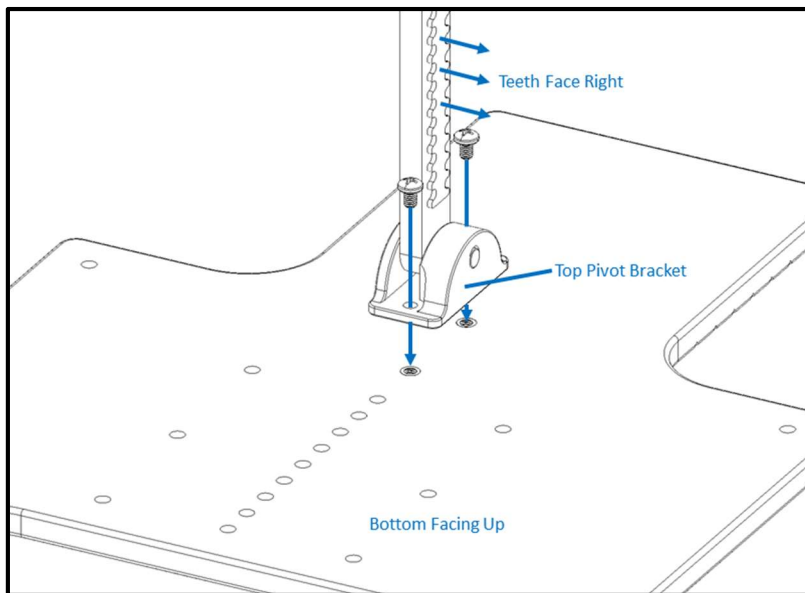
- | | |
|--|---|
| (1) Base Board | (1) Water Holder |
| (1) Device Board (for tablet) + Device Board Secure Holder | (1) Storage Tray |
| (1) Support Rails Assembly (comprised of the following) | |
| (1) Top Rail + Bracket (Pin Installed) | (2) 16mm Thumb Screw (For Device Board, Water Holder) |
| (1) Bottom Rail + Boot | (2) 6mm M4 Screws (For Support Rail Assembly) |
| (1) Velcro Head Tube Strap (Rubber Padded) | (2) 20mm M4 Screws (For Spacer Blocks) |
| (2) Velcro Rail Strap | (1) Cord Holder |
| (2) Spacer Block | |
| (2) Spacer Block Strap | |





Assembly

Attach Top Support Rail

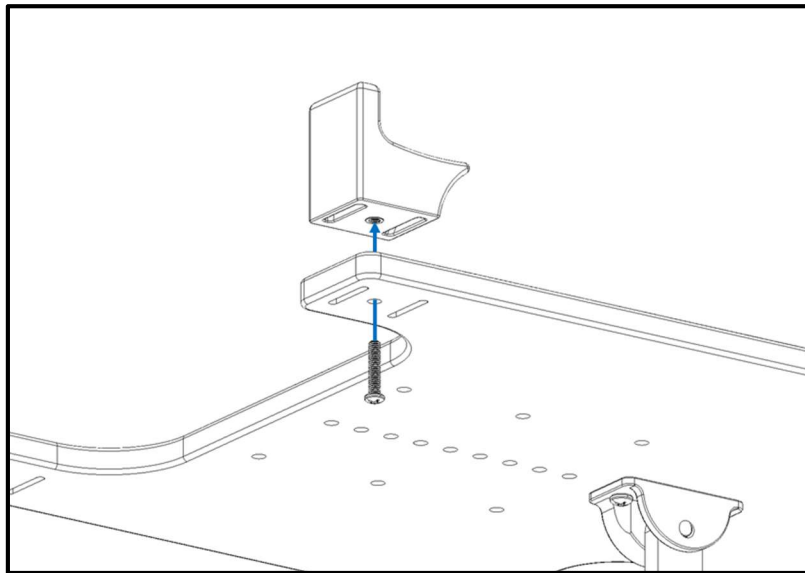


Screw the top rail portion of the Support Rail Assembly into the Base Board

- 1) Lay the Base Board upside down (with the rubber pads facing down) and the 2 bottom tabs closest to you.
- 2) Position the Top Rail to lay on top of the screw holes of Base Board with the smooth side of the rail on the left side (teeth side facing right).
- 3) Using the 2-6mm screws, screw the top rail into the Base Board through the holes in the Top Rail Pivot Bracket.
- 4) Test that the Top Rail is secure without movement from the Top Rail Pivot Bracket.

***** DO NOT OVER TIGHTEN THE SCREWS (Hand tighten plus ¼ turn should secure them enough) *****

Attach Spacer Blocks



Screw the Spacer Blocks into position on the Base Board

- 1) For each tab of the Base Board, push a 20mm screw through the screw hole from the under side of the Base Board.
- 2) Position a Spacer Block on the top side of the Base Board (as pictured) and align the screw with the screw hole.
- 3) Using phillips head screw driver, turn the screw into the Spacer Block until it is secure. You may need to hold the Spacer Block in place to ensure that the bottom strap holes line up with the strap holes on the Base Board.
- 4) Repeat Steps 1-3 for the opposite Spacer Block. Test that each Spacer Block is secure without movement.

***** DO NOT OVER TIGHTEN THE SCREWS (Hand tighten plus ¼ turn should secure them enough) *****

Attach cord holder (Optional)

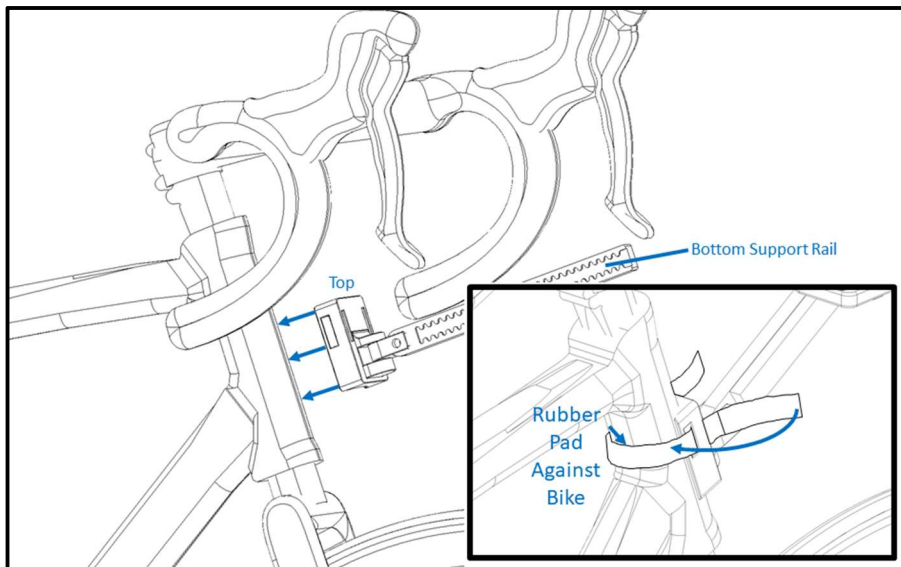
Optionally, attach the cord holder by removing the plastic film from the sticker and attach it to the board. You may want to accomplish a few rides with your Aeroboard -R before deciding on a good placement for the cord holder. Be sure to attach the cord holder in a manner that does not prevent normal function of the board. For example, a good place to stick the cord holder is underneath the board out of the way of accessory attachment holes.



Attaching to Your Bike

Your bike should be securely attached to the trainer and ready to ride before attaching Aeroboard –R to your bike.

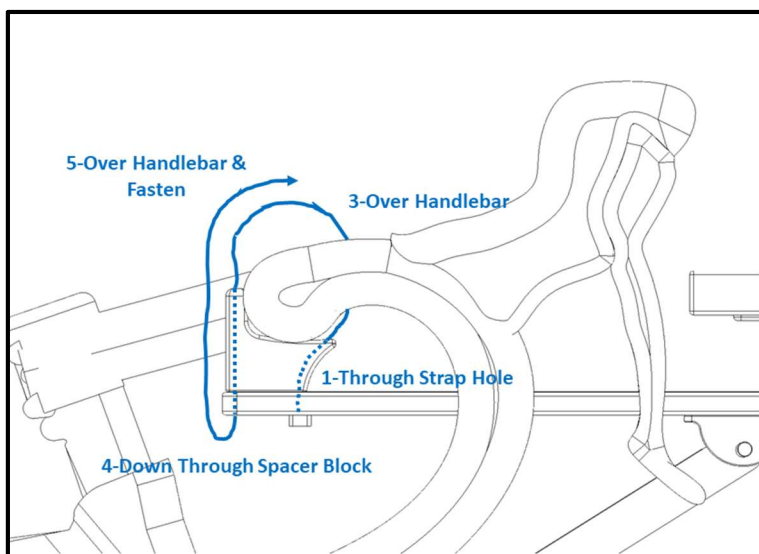
Attach Bottom Support Rail



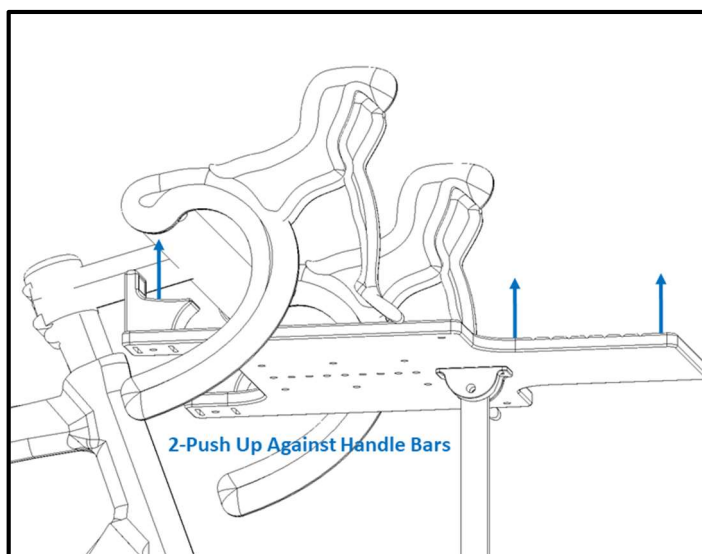
Attach the “boot” of the Support Rail Assembly to the head tube

- 1) Position the “boot” of the bottom support rail (with the top side up – as pictured) onto the head tube of the bike with the rail sticking out to avoid any brake or gear cables that may be present. If you were sitting on the bike, the smooth side of the Bottom Support Rail should be on the left side.
- 2) Using the Head Tube Velcro Strap, place the rubber padded side of the strap against the back of the head tube (between the top and bottom tube) and thread the straps through the strap holes in the bottom boot. Fold the straps back on themselves to secure the boot. You may need to alternate tightening the straps on each side to get a good tight fit.
- 3) Verify that the Bottom Support Rail can pivot unobstructed horizontally before moving to the next step.

Attach the Base Board



Follow the path for the Spacer Block Strap



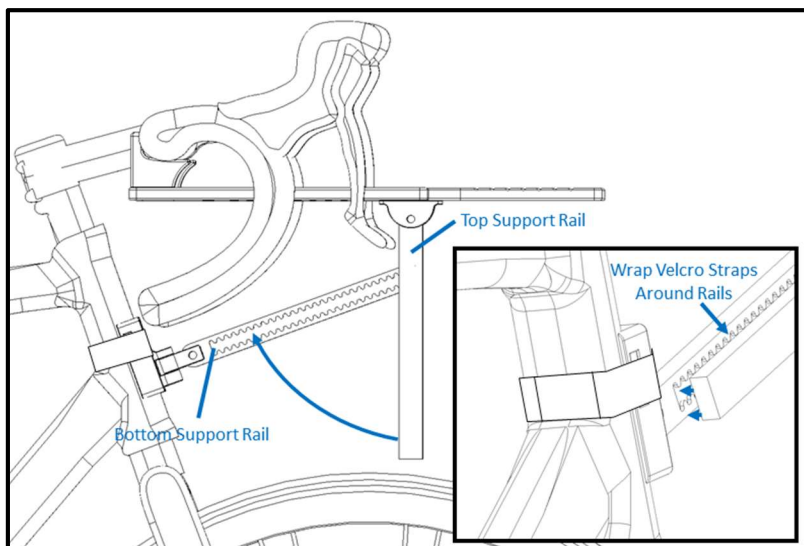
Push the Base Board up against the handlebars

- 1) Thread the Spacer Block Straps through the front strap holes (**1-Through Strap Hole**) of the Base Board with the “fuzzy”, softer side of the strap facing towards the back of the bike. Pull the straps all the way through the Spacer Blocks until the stops on the velcro strap are touching the bottom of the Base Board.



- 2) Slide the Base Board under the handlebars until the tall part of the Spacer Blocks are behind the handlebars (**2-Push Up Against Handlebars**), then push up on the Base Board until the Spacer Blocks are pushed up against the under side of the handlebars.
- 3) Center the Base Board on your handlebars. The center set of accessory holes make a good guide to center the board on your bike.
- 4) For each Spacer Block, wrap the strap over the handlebar (**3-Over Handlebar**) and down through the top strap hole at the back of the Spacer Block (**4-Down Through Spacer Block**). Pull the strap back up the outside of the Spacer Block and secure back on itself by wrapping it over the handlebar (**5-Over Handlebar & Fasten**). At this point, only tighten the straps enough to keep the Base Board secure. You may need to hold the Base Board in position with one hand while you secure the velcro straps.

Adjust the Support Rail



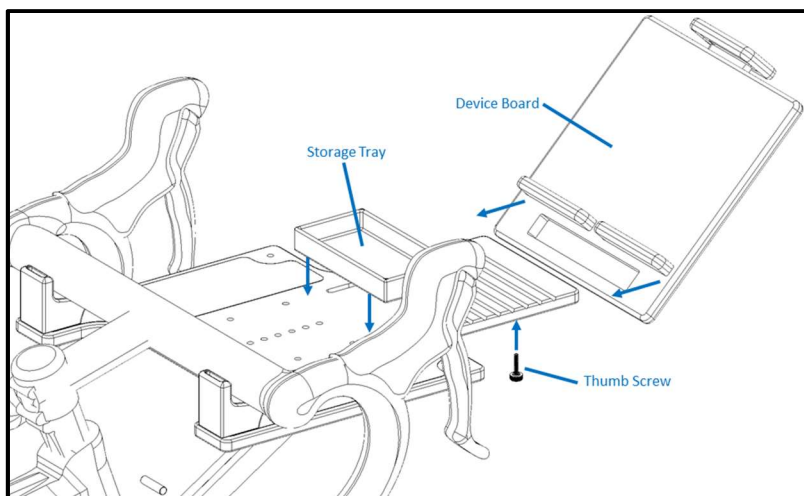
Align the support rails and push them together

- 1) With the Base Board secured to the handlebars, grasp the top support rail and push up or pull down until the Base Board is in a horizontally level position.
- 2) Grasp the Bottom Support Rail and pivot it up until it aligns with the top support rail.
- 3) Join the bottom and top support rails together by pushing the two rails together until the adjustment teeth are seated together. You may need to make fine adjustments to the rail positions to make the rail teeth seat properly together.
- 4) Use the velcro Support Rail Straps to wrap around the joined Support Rails to prevent them from coming loose during a ride.

Position & Secure the Base Board

- 1) With Aeroboard –R attached to the handlebars and supported underneath with the attached support rail, check that the Base Board is centered on the handlebars. If it is not centered, you can loosen the Spacer Block Straps to move the Base Board left or right.
- 2) Tighten the Spacer Block Straps to create a more secure fit, but do not over tighten the straps
- 3) Check that the Base Board is horizontal. If it is not horizontal, you may need to adjust the support rails to push the Base Board up or down until it is level.
- 4) Check that Aeroboard –R is able to pivot as you turn your handlebars (if your handlebars are able to turn and not using a front wheel block). If the pivoting motion is obstructed, you may need to re-position the bottom support rail and boot so that they can pivot without obstruction.

Attach the Device Board & Accessory Mounts (Optional)



Attach Device Board, Tray & any accessories

- 1) Slide the Device Board over the end of the Base Board so that it rests in one of the grooves. To prevent any sliding, make sure that it rests in a groove and not on top of the Base Board. You may also optionally use the 16mm M4 Thumb screw to secure the Device Board into place.
- 2) Attach the Storage Tray by aligning the rails on the bottom of the tray with the corresponding slots in the Base Board and push down into place.
- 3) For any accessory mounts (water, phone, head unit, etc.), use their supplied 16mm thumb screw to attach using any of the accessory holes on the Base Board.
- 4) Attach your tablet by setting it on the Device Board, then pulling up on the top slider, allowing it to “pinch” the top of tablet. Adjust the tension on the top slider using the adjustment tabs on the back of the Device Holder.



Tips

- If you need to remove Aeroboard -R from your bike, leave the support rails secured to each other and only detach the boot from the head tube. By doing this, you will not need to re-adjust the support rail when re-attaching to your bike.
- It is fine to have brake and gear cables near the support rail boot, but ensure that they do not prevent any pivoting motion.

Use

During your ride

- If you have not locked in the Device Board with a 16mm thumb screw, you can move the Device Board forward and backwards to adjust your viewing angle by securely grasping the board and sliding it forward or backwards into another groove. Be sure that it fully rests into a groove.
- Use the Water Holder to set your water bottle on and use throughout your ride.
- The Tray can be used to store food items such as gels, snacks or anything else small enough to fit in the tray.
- The non-slip pads are a great place to set your sweat towel and/or a television remote (depending on the size).

Removing from your bike

- 1) Remove all devices and gear (such as tablet, phones, water, head unit etc.).
- 2) Remove the Device Board from the Base Board and set aside (if not secured with thumb screw).
- 3) Loosen and unfasten the Head Tube Strap and pull the boot away from the head tube.
- 4) While holding onto the Base Board, loosen and unfasten the Spacer Block Straps.
- 5) Slowly pull the Base Board away from the bike, ensuring that support rails is not caught in cabling.

Warnings

- Aeroboard -R is designed for use on bicycles mounted to a fixed trainer only and is not to be used on a moving bicycle or with a "rollers" style trainer.
- Aeroboard -R is designed to hold training accessories only and not designed to hold more than **10 pounds total of items** (including water, tablets, phones etc). Sitting on, leaning on or placing heavy items on it could damage the board, the bike and/or the items it is holding.
- Do not use the Aeroboard -R as an extension of your handlebars by leaning or putting any force onto it.
- It is not recommended to change position/orientation of the Water Holder or other mounted accessories while riding.
- Moving the Device Board forward and backwards during a ride must be done with care. Make sure you have a firm grip on the Device Board while moving it and make sure it rests in a groove before releasing it.
- Remove the Device Board and set aside while attaching or removing Aeroboard -R from your bike to prevent accidental dislodging from the Base Board and possible damage to your tablet.
- Do not store Aeroboard -R in a hot location as it may cause warping.

Care

While Aeroboard -R is made from marine grade plastic and other plastic parts, it is **Hand Wash Only**. Use non-abrasive soap, water and a mild scrubber such as a sponge. Caustic scrubbers such as metal or hard plastic may scratch the Board. Exposure to extreme heat such as a dishwasher or boiling water may cause the Boards to warp or melt. Use a towel to wipe off water and air dry.



I M Board, LLC

Worldwide Limited Warranty

I M Board LLC (the maker of Aeroboard products) warrants to the original retail purchaser ("you") that the I M Board product for which they received this warranty is free from defects in material and workmanship for one year from the date of original retail purchase. This warranty is not transferable to a subsequent purchaser. I M Board's sole obligation under this warranty is to repair or replace the product, at I M Board's option. I M Board must be notified in writing of any claim under this warranty within 60 days of any claimed lack of conformity of the product.

Warranty Limitations

The duration of any implied warranty or condition, of merchantability, fitness for a particular purpose, or otherwise, on this product shall be limited to the duration of the express warranty set forth above. In no event shall I M Board be liable for any loss, inconvenience or damage, whether direct, incidental, consequential or otherwise, resulting from breach of any express or implied warranty or condition, of merchantability, fitness for a particular purpose, or otherwise with respect to this product, except as set forth herein. Some states or countries do not allow limitation on how long an implied warranty lasts and some do not allow exclusions or limitations of incidental or consequential damages, so the above limitations or exclusions may not apply to you. This warranty gives you specific legal rights, and you may also have other rights, which may vary, from location to location. This warranty will be interpreted pursuant to the laws of the United States. The original English language version/meaning of this warranty controls over all translations and I M Board is not responsible for any errors in translation of this warranty or any product instructions. This warranty is not intended to confer any additional legal, jurisdictional or warranty rights to you other than those set forth herein or required by law. If any portion of this warranty is held to be invalid or unenforceable for any reason, such finding will not invalidate any other provision. For products purchased in countries other than the United States please contact I M Board's authorized distributor in that respective country.

Warranty Service Options

To obtain service under this warranty you must either:

- (1) Bring or send your I M Board product, together with this warranty, the retail seller's original receipt or other satisfactory proof of the date of purchase to the retailer where you purchased the item or another authorized I M Board retailer, or
- (2) Send your I M Board product (with the return authorization number on the outside of the shipping container and affixed to the product), together with the retail seller's original receipt or other satisfactory proof of the date of purchase to I M Board. You must first obtain a return authorization number by sending an email to warranty@aeroboard.io prior to returning the product to I M Board.

I M Board may require that you complete and sign a warranty replacement request form before processing your warranty claim.

Any postage, insurance or other shipping costs incurred in sending your I M Board product for service under either option above is your responsibility. I M Board will not be responsible for products lost or damaged in shipping.

For products purchased in countries other than the United States please contact I M Board's authorized distributor in the country where the product was purchased. They can be found on our website at www.aeroboard.io.

Warranty Exclusions

Retailers and sellers of I M Board products are not authorized to modify this warranty in any way. It is your responsibility to regularly examine the product to determine the need for normal service or replacement. This warranty does not cover the following:

- Products that have been modified, neglected or poorly maintained, used for commercial purposes, misused or abused or involved in accidents.
- Damage occurring during shipment of the products (such claims must be presented directly to the shipper).
- Damage to products resulting from improper assembly or repair, the use or installation of parts or accessories not compatible with the original intended use of the product, or the failure to follow the product warnings and usage instructions.
- Damage or deterioration to the surface finish, aesthetics or appearance of the product.
- The labor required to remove and/or re-fit and re-adjust the item covered by this warranty.
- Normal wear to the product.
- Any products for which the consumer does not follow the warranty procedures outlined above.

For the current version of this warranty please visit our website at www.aeroboard.io.