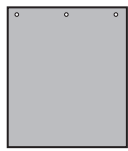


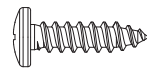
Parts Included:



S x2



T x1

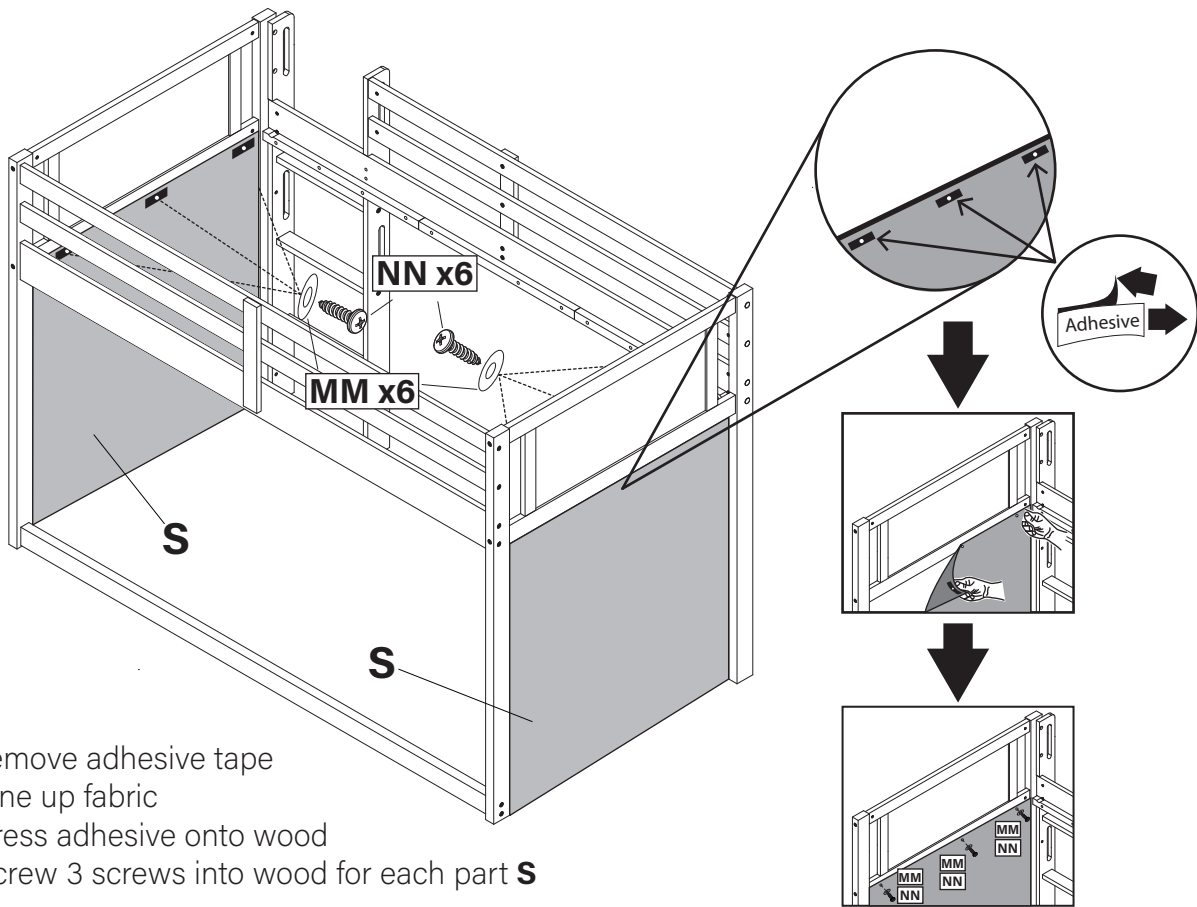


NN x11



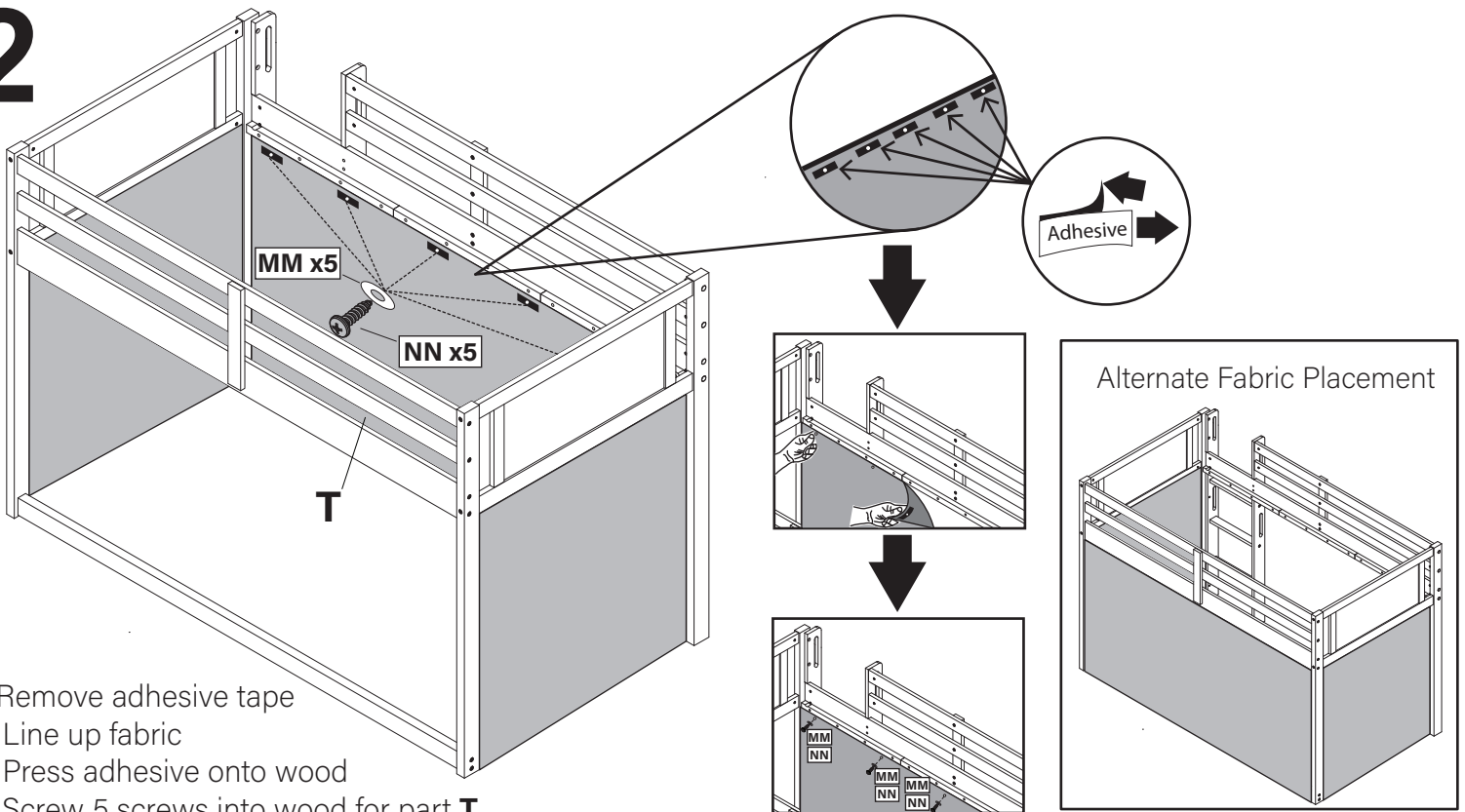
MM x11

1



1. Remove adhesive tape
2. Line up fabric
3. Press adhesive onto wood
4. Screw 3 screws into wood for each part **S**

2



1. Remove adhesive tape
2. Line up fabric
3. Press adhesive onto wood
4. Screw 5 screws into wood for part **T**

NOTE: Use a heavy screwdriver or power drill to insure the screws are set properly.

⚠ WARNING:

THIS ITEM REQUIRES ASSEMBLY BY AN ADULT BECAUSE OF SMALL PARTS AND SHARP POINTS. CARE SHOULD BE TAKEN IN UNPACKING AND ASSEMBLY OF THIS PRODUCT. KEEP ALL ASSEMBLY HARDWARE AWAY FROM SMALL CHILDREN.