

KID SIZE TODDLER POTTY



INSTRUCTION MANUAL

ADULT ASSEMBLY REQUIRED

55001

STYLES AND COLORS MAY VARY

REQUIRED:
Screwdriver (not included)



**▲ WARNING:
CHOKING HAZARD**

Adult assembly required because of small parts. Keep assembly parts out of reach of children under 3 years.

**Read all instructions BEFORE assembly and USE of product
KEEP INSTRUCTIONS FOR FUTURE USE.**

Customer Experience Center
email: gcs@DeltaChildren.com



www.DeltaChildren.com

DGP-IM-20200917

WARNING

WARNING: Please follow all of these instructions to ensure the safety of your child.
Keep these instructions for future reference.

WARNING: Please read these instructions before the first use and keep them for future reference.

- **NEVER** leave child unattended while using the product.
- **NEVER** lift the product with your child in it.
- This product is not a toy, do not allow children to play with it.
- **DO NOT** load this product with more than 55 lbs (25kg).

CARE AND MAINTENANCE

- Clean with a soft cloth, a mild detergent and warm water.



Before returning this product to the store! Let's see if we can assist you!

- **Not sure how to assemble our product?**

Visit our site for easy to follow instructions along with some Tricks and Tips assembly videos <https://www.deltachildren.com/pages/instructions>

- **If you are missing a piece or have a damaged part**

Please contact our Consumer Experience Center for assistance at gcs@DeltaChildren.com. To better assist you please have your Style# or Model# and Lot# available. This can be found on a white rectangular sticker on your product, on the registration card, and on the product's box.

- **In the event we do not have a replacement part available**

You may need to return your product to the retailer for an exchange or refund.

- **Warranty**

In order to protect your investment, don't forget to register your product.

You may also wish to consider purchasing our extended warranty.

Visit <https://www.deltachildren.com/pages/extended-warranty> for more details.

- **Please note:**

“All Final”, “As Is” or Third Party/Liquidator sales are not covered under our Limited Manufacturer Warranty..

DELTA CHILDREN

LIMITED MANUFACTURER WARRANTY

This Delta product is warranted to be free from defects for a period of 90 days from the date of purchase under normal use. This warranty extends only to the original retail purchaser and is valid only when supplied with proof of purchase, or if received as a gift, when the registration is on file with Delta. This limited manufacturer warranty does not cover the following:

- Products purchased as floor models or samples.
- Items purchased on an “as-is” basis, as a second hand product, or as a resale product.
- Items purchased at a Final sale, a “Going out of Business” sale, or a Liquidation sale.

TO REGISTER YOUR PRODUCT for important safety alerts and updates to your product please visit www.deltachildren.com

TO REPORT A PROBLEM, please log on to www.deltachildren.com and click the Consumer Care Tab, or contact us by email at gcs@DeltaChildren.com.

Date of Purchase: _____ (you should also keep your receipt)

EXTENDED WARRANTY

DON'T MISS YOUR CHANCE TO BE COVERED FOR ALL OF LIFE'S MISHAPS!

With Delta's Extended Warranty, you're covered for mechanical failure from normal use or if your item stops working due to normal wear and tear, plus all those unexpected surprises.

2 YEARS OF PROTECTION

For Additional Information:

Simply visit our Website, register your product, and add the Extended Warranty

<https://www.deltachildren.com/pages/product-registration>

Extended Warranty only available in the following States: Arkansas, Colorado, Delaware, District of Columbia, Georgia, Idaho, Illinois, Indiana, Iowa, Kansas, Kentucky, Louisiana, Maryland, Michigan, Mississippi, Missouri, Nebraska, Nevada, New Hampshire, New York, North Carolina, North Dakota, Pennsylvania, Rhode Island, South Dakota, Tennessee, Utah, West Virginia

PARTS

IMPORTANT! Please remove all parts from the package and identify them before assembly



POTTY SEAT & LID



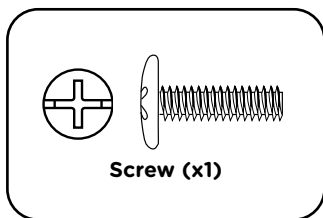
BABY WIPES HOLDER



SEAT CUSHION



POTTY BASE



Screw (x1)



REMOVABLE BOWL

ASSEMBLY

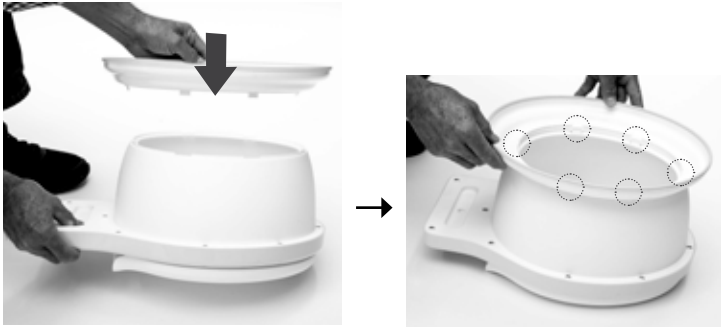


Fig. 1



*Assembled

1

ATTACHING BASE TO POTTY SEAT

- Start with potty seat **upside down**, align base with bottom opening of seat and push clips together to secure (Fig. 1)

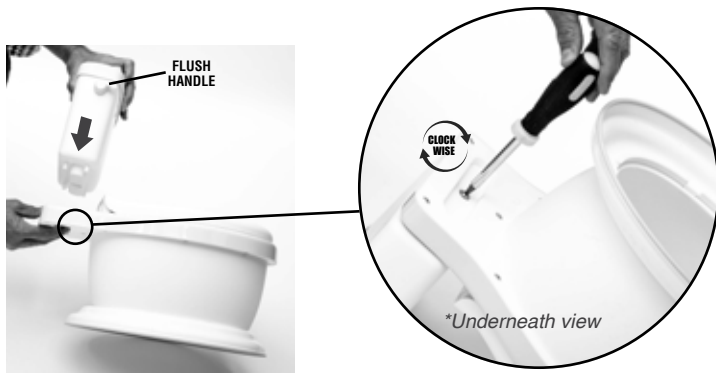


Fig. 2

Fig. 2A

2

ATTACHING BABY WIPES HOLDER TO POTTY SEAT

- Align wipes holder with potty seat so flush handle is on **LEFT** (when viewing from front), then place into socket as shown (Fig. 2).
NOTE: Baby wipes holder installs in one direction due to pegs on bottom.
- After baby wipes holder is correctly seated, use screwdriver to secure using included screw (Fig. 2A)



Fig. 3

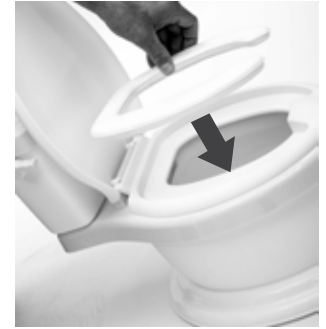


Fig. 3A

3

ATTACHING SEAT CUSHION TO POTTY SEAT

- Lift potty lid (Fig. 3)
- Align seat cushion with potty seat and place in cutout (Fig. 3A)



Fig. 4

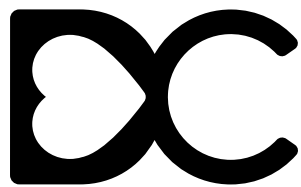


*Fully assembled

4

INSERTING REMOVABLE BOWL

- Lift potty seat and insert removable bowl into potty to complete assembly (Fig. 4)



DELTACHILDREN

Delta Children's Products Corp.

114 West 26th Street
New York, NY 10001
gcs@DeltaChildren.com
www.DeltaChildren.com