



Green Goddess

Sample ID: G3F0402-01

Matrix: Industrial Hemp

Test ID: 5019523

Source ID:

Date Sampled: 06/23/23

Date Accepted: 06/23/23

Tweedle Farms

info@tweedlefarms.com

Results at a Glance

Total THC : 0.51 %

Total CBD : 13 %

Total CBG : 0.42 %

Pesticides : PASS

Percent Moisture : 8.38 % PASS

Total Terpenes : 0.919 % PASS

Microbials : PASS

Metals : PASS



**ISO 17025
ACCREDITED
LABORATORY**

Eric Wendt
Chief Science Officer - 6/29/2023



Green Goddess

Sample ID: G3F0402-01

Matrix: Industrial Hemp

Test ID: 5019523

Source ID:

Date Sampled: 06/23/23

Date Accepted: 06/23/23

Tweedle Farms

info@tweedlefarms.com

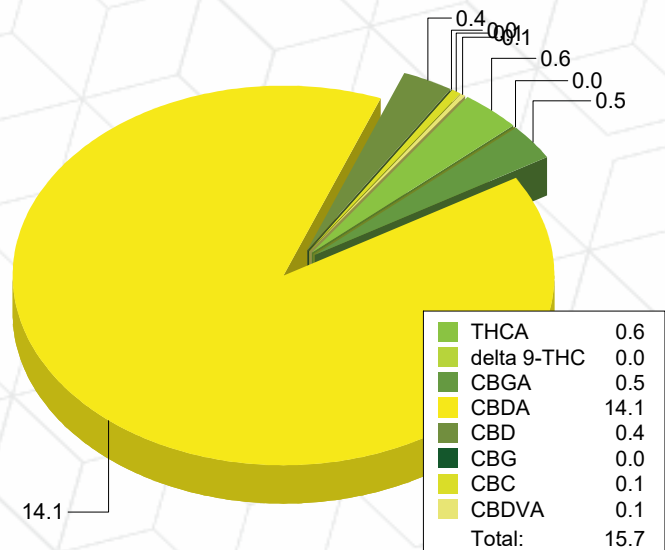
Potency Analysis by HPLC

Date/Time Extracted: 06/27/23 12:23

Analysis Method/SOP: 215

Batch Identification: 2326021

	LOQ (%)	% by Wt.	mg/g	Cannabinoids Profile	
Total THC	0.010	0.51	5.1		
Total CBD	0.009	13	130		
Total CBG	0.0009	0.42	4.2		
THCA	0.0005	0.57	5.7		
delta 9-THC	0.0005	0.005	0.05		
delta 8-THC	0.005	< LOQ	< LOQ		
THCV	0.006	< LOQ	< LOQ		
THCVA	0.002	< LOQ	< LOQ		
CBD	0.002	0.44	4.4		
CBDA	0.002	14	140		
CBDV	0.005	< LOQ	< LOQ		
CBDVA	0.002	0.052	0.52		
CBN	0.003	< LOQ	< LOQ		
CBG	0.0009	0.015	0.15		
CBGA	0.0009	0.47	4.7		
CBC	0.010	0.082	0.82		



Moisture

Date/Time Extracted: 06/26/23 17:31

Analysis Method/SOP: 103

Moisture: 8.38 %

Action Level: 15%

Potency results are reported on a dry weight basis.

Total THC = delta 9-THC + (THCA * 0.877)

Total CBD = CBD + (CBDA * 0.877)

Total CBG = CBG + (CBGA * 0.878)

LOQ=Limit of Quantification, the lowest measurable concentration of an analyte.



ISO 17025
ACCREDITED
LABORATORY

Eric Wendt
Chief Science Officer - 6/29/2023

These results relate only to the sample included on this report. The report may not be reproduced except in full, without the written permission of Green Leaf Lab.

This is for informational testing and is not compliance testing. Lab results apply to the sample as received.



Green Goddess

Sample ID: G3F0402-01

Matrix: Industrial Hemp

Test ID: 5019523

Source ID:

Date Sampled: 06/23/23

Date Accepted: 06/23/23

Tweedle Farms

info@tweedlefarms.com

Terpene Analysis by GCMS

Date/Time Extracted: 06/27/23 12:23

Analysis Method/SOP: 204

Date/Time Analyzed: 06/27/23 22:48

Analyte	Result	LOD	LOQ	Units	Analyte	Result	LOD	LOQ	Units
(-)-Borneol	< LOQ	0.001	0.003	mg/g	(+)-Borneol	< LOQ	0.001	0.003	mg/g
3-Carene	< LOQ	0.001	0.003	mg/g	alpha-Bisabolol	< LOQ	0.001	0.003	mg/g
alpha-Cedrene	0.93	0.001	0.003	mg/g	alpha-Humulene	< LOQ	0.001	0.003	mg/g
Alpha-Phellandrene	< LOQ	0.001	0.003	mg/g	alpha-Pinene	0.09	0.001	0.003	mg/g
alpha-Terpinene	< LOQ	0.001	0.003	mg/g	alpha-Thujone	< LOQ	0.001	0.003	mg/g
A-Terpineol	< LOQ	0.001	0.003	mg/g	beta-Caryophyllene	< LOQ	0.001	0.003	mg/g
beta-Myrcene	3.98	0.001	0.003	mg/g	beta-Pinene	0.19	0.001	0.003	mg/g
Camphene	< LOQ	0.001	0.003	mg/g	Camphor	< LOQ	0.001	0.003	mg/g
Carvacrol	< LOQ	0.001	0.003	mg/g	Carvone	< LOQ	0.001	0.003	mg/g
Caryophyllene Oxide	< LOQ	0.001	0.003	mg/g	Cedrol	< LOQ	0.001	0.003	mg/g
Cis-beta-Farnesene	< LOQ	0.001	0.003	mg/g	Cis-beta-Ocimene	< LOQ	0.001	0.003	mg/g
cis-Nerolidol	< LOQ	0.001	0.003	mg/g	Citral	< LOQ	0.001	0.003	mg/g
Citronellol	< LOQ	0.001	0.003	mg/g	Endo-fenchyl alcohol	< LOQ	0.001	0.003	mg/g
Eucalyptol	< LOQ	0.001	0.003	mg/g	Farnesol 1	< LOQ	0.001	0.003	mg/g
Farnesol 2	< LOQ	0.001	0.003	mg/g	gamma-Terpinene	0.61	0.001	0.003	mg/g
Geraniol	< LOQ	0.001	0.003	mg/g	Geranyl acetate	< LOQ	0.001	0.003	mg/g
Guaiol	< LOQ	0.001	0.003	mg/g	Isoborneol	< LOQ	0.001	0.003	mg/g
Isobornyl Acetate	< LOQ	0.001	0.003	mg/g	Isopulegol	< LOQ	0.001	0.003	mg/g
Limonene	0.61	0.001	0.003	mg/g	Linalool	1.98	0.001	0.003	mg/g
Menthol	< LOQ	0.001	0.003	mg/g	Menthone	< LOQ	0.001	0.003	mg/g
Nootkatone	< LOQ	0.001	0.003	mg/g	Octyl Acetate	< LOQ	0.001	0.003	mg/g
p-Cymene	< LOQ	0.001	0.003	mg/g	Phytane	< LOQ	0.001	0.003	mg/g
Piperitone	< LOQ	0.001	0.003	mg/g	Pulegone	< LOQ	0.001	0.003	mg/g
Sabinene	0.25	0.001	0.003	mg/g	Sabinene hydrate	< LOQ	0.001	0.003	mg/g
Safranal	< LOQ	0.001	0.003	mg/g	Squalene	< LOQ	0.001	0.003	mg/g
Terpinen-4-ol	< LOQ	0.001	0.003	mg/g	Terpinolene	< LOQ	0.001	0.003	mg/g
Thymol	< LOQ	0.001	0.003	mg/g	trans-beta-Farnesene	< LOQ	0.001	0.003	mg/g
trans-beta-Ocimene	0.56	0.001	0.003	mg/g	trans-Nerolidol	< LOQ	0.001	0.003	mg/g
Valencene	< LOQ	0.001	0.003	mg/g	Verbenone	< LOQ	0.001	0.003	mg/g
Total Terpenes	9.19	0.001	0.003	mg/g					

ND - Compound not detected, <LOQ - Results below the Limit of Quantitation
Terpenes are not Accredited by ORELAP to TNI 2016



**ISO 17025
ACCREDITED
LABORATORY**

Eric Wendt
Chief Science Officer - 6/29/2023



Green Goddess

Sample ID: G3F0402-01

Matrix: Industrial Hemp

Test ID: 5019523

Source ID:

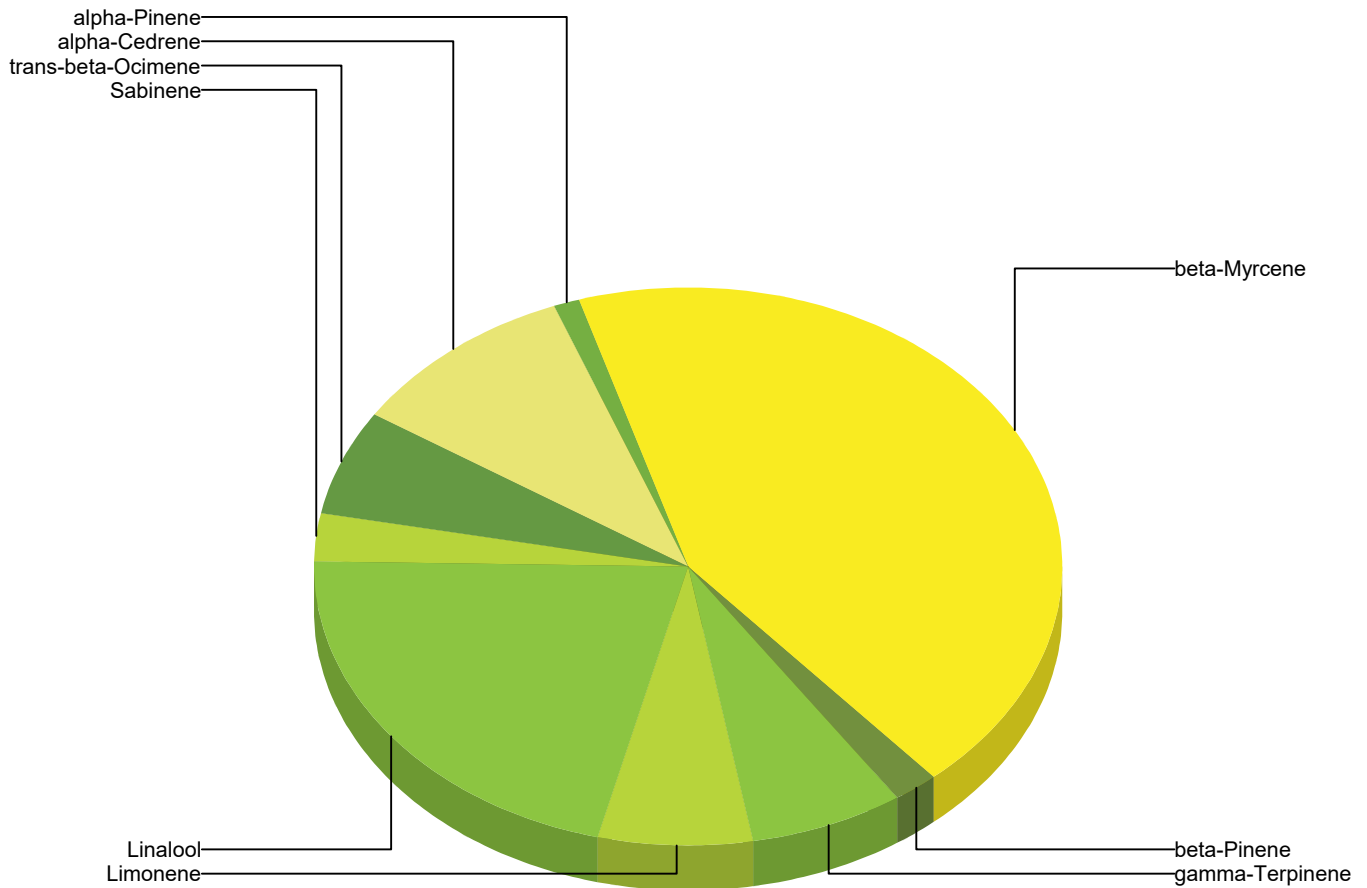
Date Sampled: 06/23/23

Date Accepted: 06/23/23

Tweedle Farms

info@tweedlefarms.com

Terpene Profile



Percentage of Total Terpenes Identified



Eric Wendt
Chief Science Officer - 6/29/2023



Green Goddess

Sample ID: G3F0402-01

Matrix: Industrial Hemp

Test ID: 5019523

Source ID:

Date Sampled: 06/23/23

Date Accepted: 06/23/23

Tweedle Farms

info@tweedlefarms.com

Pesticide Analysis by LCMSMS and GCMSMS

Date/Time Extracted: 06/24/23 12:15

Analysis Method/SOP: 203

Analyte	Result	Action Level	LOD	LOQ	Units	Notes	Analyte	Result	Action Level	LOD	LOQ	Units	Notes
Abamectin	< LOQ	0.5		0.04	ppm		Acephate	< LOQ	0.4		0.04	ppm	
Acequinocyl	< LOQ	2		0.04	ppm		Acetamiprid	< LOQ	0.2		0.04	ppm	
Aldicarb	< LOQ	0.4		0.04	ppm		Azoxystrobin	< LOQ	0.2		0.04	ppm	
Bifenazate	< LOQ	0.2		0.04	ppm		Bifenthrin	< LOQ	0.2		0.04	ppm	
Boscalid	< LOQ	0.4		0.04	ppm		Carbaryl	< LOQ	0.2		0.04	ppm	
Carbofuran	< LOQ	0.2		0.04	ppm		Chlorantraniliprole	< LOQ	0.2		0.04	ppm	
Chlorfenapyr	< LOQ	1		0.1	ppm		Chlorpyrifos	< LOQ	0.2		0.04	ppm	
Clofentezine	< LOQ	0.2		0.04	ppm		Cyfluthrin	< LOQ	1		0.1	ppm	
Cypermethrin	< LOQ	1		0.1	ppm		Daminozide	< LOQ	1		0.04	ppm	
DDVP (Dichlorvos)	< LOQ	1		0.04	ppm		Diazinon	< LOQ	0.2		0.04	ppm	
Dimethoate	< LOQ	0.2		0.04	ppm		Ethoprophos	< LOQ	0.2		0.04	ppm	
Etofenprox	< LOQ	0.4		0.04	ppm		Etoxazole	< LOQ	0.2		0.04	ppm	
Fenoxycarb	< LOQ	0.2		0.04	ppm		Fenpyroximate	< LOQ	0.4		0.04	ppm	
Fipronil	< LOQ	0.4		0.04	ppm		Fonicamid	< LOQ	1		0.04	ppm	
Fludioxonil	< LOQ	0.4		0.04	ppm		Hexythiazox	< LOQ	1		0.04	ppm	
Imazalil	< LOQ	0.2		0.04	ppm		Imidacloprid	< LOQ	0.4		0.04	ppm	
Kresoxim-methyl	< LOQ	0.4		0.04	ppm		Malathion	< LOQ	0.2		0.04	ppm	
Metalaxyl	< LOQ	0.2		0.04	ppm		Methiocarb	< LOQ	0.2		0.04	ppm	
Methomyl	< LOQ	0.4		0.04	ppm		Methyl parathion	< LOQ	0.2		0.04	ppm	
MGK-264	< LOQ	0.2		0.04	ppm		Myclobutanil	< LOQ	0.2		0.04	ppm	
Naled	< LOQ	0.5		0.04	ppm		Oxamyl	< LOQ	1		0.04	ppm	
Paclobutrazol	< LOQ	0.4		0.04	ppm		Permethrins	< LOQ	0.2		0.04	ppm	
Phosmet	< LOQ	0.2		0.04	ppm		Piperonyl butoxide	< LOQ	2		1.0	ppm	
Prallethrin	< LOQ	0.2		0.04	ppm		Propiconazole	< LOQ	0.4		0.04	ppm	
Propoxur	< LOQ	0.2		0.04	ppm		Pyrethrins	< LOQ	1		0.5	ppm	
Pyridaben	< LOQ	0.2		0.04	ppm		Spinosad	< LOQ	0.2		0.04	ppm	
Spiromesifen	< LOQ	0.2		0.04	ppm		Spirotetramat	< LOQ	0.2		0.04	ppm	
Spiroxamine	< LOQ	0.4		0.04	ppm		Tebuconazole	< LOQ	0.4		0.04	ppm	
Thiacloprid	< LOQ	0.2		0.04	ppm		Thiamethoxam	< LOQ	0.2		0.04	ppm	
Trifloxystrobin	< LOQ	0.2		0.04	ppm								

ND - Compound not detected

Results above the Action Level fail state testing requirements and will be highlighted **Red**.



**ISO 17025
ACCREDITED
LABORATORY**

Eric Wendt
Chief Science Officer - 6/29/2023

These results relate only to the sample included on this report. The report may not be reproduced except in full, without the written permission of Green Leaf Lab.

This is for informational testing and is not compliance testing. Lab results apply to the sample as received.



Green Goddess

Sample ID: G3F0402-01

Matrix: Industrial Hemp

Test ID: 5019523

Source ID:

Date Sampled: 06/23/23

Date Accepted: 06/23/23

Tweedle Farms

info@tweedlefarms.com

Microbials by PCR

Date/Time Extracted: 06/26/23 14:42

Analysis Method/SOP: Microbials

Analyte	Result	Action Level	LOD	LOQ	Units	
Escherichia Coli	ND	1	0.00	0.00	cfu/g	No detection in 1 gram
Salmonella	ND	1	0.00	0.00	cfu/g	No detection in 1 gram
Total Aspergillus	ND	1	0.00	0.00	cfu/g	No detection in 1 gram

Metals by ICPMS

Date/Time Extracted: 06/24/23 10:25

Analysis Method/SOP: Metals

Analyte	Result	Action Level	LOD	LOQ	Units
Arsenic	< LOQ	0.2	0.03	0.08	ug/g
Cadmium	< LOQ	0.2	0.02	0.08	ug/g
Lead	< LOQ	0.5	0.01	0.08	ug/g
Mercury	< LOQ	0.1	0.01	0.04	ug/g

<LOQ - Results below the Limit of Quantitation

Results above the Action Level fail state testing requirements and will be highlighted **Red**.



**ISO 17025
ACCREDITED
LABORATORY**

Eric Wendt
Chief Science Officer - 6/29/2023



Quality Control Potency

Batch: 2326021 - 215-Hemp

Blank(2326021-BLK1)							
Analyte	Result	LOQ	Units	%Recovery Limits	Extracted	Analyzed	Notes
THCA	< LOQ	0.0005	%		06/27/23 12:23	06/28/23 22:20	
delta 9-THC	< LOQ	0.0005	%		06/27/23 12:23	06/28/23 22:20	
delta 8-THC	< LOQ	0.004	%		06/27/23 12:23	06/28/23 22:20	
THCV	< LOQ	0.005	%		06/27/23 12:23	06/28/23 22:20	
THCVA	< LOQ	0.002	%		06/27/23 12:23	06/28/23 22:20	
CBD	< LOQ	0.0005	%		06/27/23 12:23	06/28/23 22:20	
CBDA	< LOQ	0.0005	%		06/27/23 12:23	06/28/23 22:20	
CBDV	< LOQ	0.005	%		06/27/23 12:23	06/28/23 22:20	
CBDVA	< LOQ	0.002	%		06/27/23 12:23	06/28/23 22:20	
CBN	< LOQ	0.003	%		06/27/23 12:23	06/28/23 22:20	
CBG	< LOQ	0.0008	%		06/27/23 12:23	06/28/23 22:20	
CBGA	< LOQ	0.0008	%		06/27/23 12:23	06/28/23 22:20	
CBC	< LOQ	0.009	%		06/27/23 12:23	06/28/23 22:20	

Reference(2326021-SRM1)							
Analyte	% Recovery	LOQ	Units	%Recovery Limits	Extracted	Analyzed	Notes
THCA	93.1	0.0005	%	90-110	06/27/23 12:23	06/29/23 15:36	
delta 9-THC	93.8	0.0005	%	90-110	06/27/23 12:23	06/29/23 15:36	
delta 8-THC	97.4	0.004	%	90-110	06/27/23 12:23	06/29/23 15:36	
CBD	104	0.0005	%	90-110	06/27/23 12:23	06/29/23 15:36	
CBDA	91.6	0.0005	%	90-110	06/27/23 12:23	06/29/23 15:36	

Pesticide Analysis

Batch: 2325099 - 203

Blank(2325099-BLK1)							
Analyte	Result	LOQ	Units	%Recovery Limits	Extracted	Analyzed	Notes
Abamectin	< LOQ	0.04	ppm		06/24/23 12:15	06/24/23 20:05	
DDVP (Dichlorvos)	< LOQ	0.04	ppm		06/24/23 12:15	06/24/23 20:05	
Acephate	< LOQ	0.04	ppm		06/24/23 12:15	06/24/23 20:05	
Acequinocyl	< LOQ	0.04	ppm		06/24/23 12:15	06/24/23 20:05	
Acetamiprid	< LOQ	0.04	ppm		06/24/23 12:15	06/24/23 20:05	
Aldicarb	< LOQ	0.04	ppm		06/24/23 12:15	06/24/23 20:05	
Azoxystrobin	< LOQ	0.04	ppm		06/24/23 12:15	06/24/23 20:05	
Bifenazate	< LOQ	0.04	ppm		06/24/23 12:15	06/24/23 20:05	
Bifenthrin	< LOQ	0.04	ppm		06/24/23 12:15	06/24/23 20:05	
Boscalid	< LOQ	0.04	ppm		06/24/23 12:15	06/24/23 19:20	
Carbaryl	< LOQ	0.04	ppm		06/24/23 12:15	06/24/23 20:05	
Carbofuran	< LOQ	0.04	ppm		06/24/23 12:15	06/24/23 20:05	
Chlorantraniliprole	< LOQ	0.04	ppm		06/24/23 12:15	06/24/23 20:05	



Eric Wendt
Chief Science Officer - 6/29/2023



Quality Control Pesticide Analysis (Continued)

Batch: 2325099 - 203 (Continued)

Blank(2325099-BLK1)							
Analyte	Result	LOQ	Units	%Recovery Limits	Extracted	Analyzed	Notes
Chlorfenapyr	< LOQ	0.1	ppm		06/24/23 12:15	06/24/23 19:20	
Chlorpyrifos	< LOQ	0.04	ppm		06/24/23 12:15	06/24/23 20:05	
Clofentezine	< LOQ	0.04	ppm		06/24/23 12:15	06/24/23 20:05	
Cyfluthrin	< LOQ	0.1	ppm		06/24/23 12:15	06/24/23 19:20	
Cypermethrin	< LOQ	0.1	ppm		06/24/23 12:15	06/24/23 19:20	
Daminozide	< LOQ	0.04	ppm		06/24/23 12:15	06/24/23 20:05	
Diazinon	< LOQ	0.04	ppm		06/24/23 12:15	06/24/23 20:05	
Dimethoate	< LOQ	0.04	ppm		06/24/23 12:15	06/24/23 20:05	
Ethoprophos	< LOQ	0.04	ppm		06/24/23 12:15	06/24/23 20:05	
Etofenprox	< LOQ	0.04	ppm		06/24/23 12:15	06/24/23 20:05	
Etoxazole	< LOQ	0.04	ppm		06/24/23 12:15	06/24/23 20:05	
Fenoxycarb	< LOQ	0.04	ppm		06/24/23 12:15	06/24/23 20:05	
Fenpyroximate	< LOQ	0.04	ppm		06/24/23 12:15	06/24/23 20:05	
Fipronil	< LOQ	0.04	ppm		06/24/23 12:15	06/24/23 19:20	
Flonicamid	< LOQ	0.04	ppm		06/24/23 12:15	06/24/23 20:05	
Fludioxonil	< LOQ	0.04	ppm		06/24/23 12:15	06/24/23 19:20	
Hexythiazox	< LOQ	0.04	ppm		06/24/23 12:15	06/24/23 20:05	
Imazalil	< LOQ	0.04	ppm		06/24/23 12:15	06/24/23 20:05	
Imidacloprid	< LOQ	0.04	ppm		06/24/23 12:15	06/24/23 20:05	
Kresoxim-methyl	< LOQ	0.04	ppm		06/24/23 12:15	06/24/23 19:20	
Metalaxyl	< LOQ	0.04	ppm		06/24/23 12:15	06/24/23 20:05	
Malathion	< LOQ	0.04	ppm		06/24/23 12:15	06/24/23 19:20	
Methiocarb	< LOQ	0.04	ppm		06/24/23 12:15	06/24/23 20:05	
Methomyl	< LOQ	0.04	ppm		06/24/23 12:15	06/24/23 20:05	
Myclobutanil	< LOQ	0.04	ppm		06/24/23 12:15	06/24/23 20:05	
Methyl parathion	< LOQ	0.04	ppm		06/24/23 12:15	06/24/23 19:20	
Naled	< LOQ	0.04	ppm		06/24/23 12:15	06/24/23 20:05	
MGK-264	< LOQ	0.04	ppm		06/24/23 12:15	06/24/23 19:20	
Oxamyl	< LOQ	0.04	ppm		06/24/23 12:15	06/24/23 20:05	
Paclobutrazol	< LOQ	0.04	ppm		06/24/23 12:15	06/24/23 20:05	
Phosmet	< LOQ	0.04	ppm		06/24/23 12:15	06/24/23 20:05	
Permethrins	< LOQ	0.04	ppm		06/24/23 12:15	06/24/23 19:20	
Piperonyl butoxide	< LOQ	1.0	ppm		06/24/23 12:15	06/24/23 20:05	
Prallethrin	< LOQ	0.04	ppm		06/24/23 12:15	06/24/23 20:05	
Propiconazole	< LOQ	0.04	ppm		06/24/23 12:15	06/24/23 19:20	
Propoxur	< LOQ	0.04	ppm		06/24/23 12:15	06/24/23 20:05	
Pyrethrins	< LOQ	0.5	ppm		06/24/23 12:15	06/24/23 20:05	
Pyridaben	< LOQ	0.04	ppm		06/24/23 12:15	06/24/23 20:05	



Eric Wendt
Chief Science Officer - 6/29/2023



Quality Control Pesticide Analysis (Continued)

Batch: 2325099 - 203 (Continued)

Blank(2325099-BLK1)							
Analyte	Result	LOQ	Units	%Recovery Limits	Extracted	Analyzed	Notes
Spinosad	< LOQ	0.04	ppm		06/24/23 12:15	06/24/23 20:05	
Spiromesifen	< LOQ	0.04	ppm		06/24/23 12:15	06/24/23 20:05	
Spirotetramat	< LOQ	0.04	ppm		06/24/23 12:15	06/24/23 20:05	
Spiroxamine	< LOQ	0.04	ppm		06/24/23 12:15	06/24/23 20:05	
Tebuconazole	< LOQ	0.04	ppm		06/24/23 12:15	06/24/23 20:05	
Thiacloprid	< LOQ	0.04	ppm		06/24/23 12:15	06/24/23 20:05	
Thiamethoxam	< LOQ	0.04	ppm		06/24/23 12:15	06/24/23 20:05	
Trifloxystrobin	< LOQ	0.04	ppm		06/24/23 12:15	06/24/23 20:05	

LCS(2325099-BS1)							
Analyte	% Recovery	LOQ	Units	%Recovery Limits	Extracted	Analyzed	Notes
Abamectin	56.8	0.04	ppm	50-150	06/24/23 12:15	06/24/23 20:28	
DDVP (Dichlorvos)	88.8	0.04	ppm	60-120	06/24/23 12:15	06/24/23 20:28	
Acephate	97.4	0.04	ppm	60-120	06/24/23 12:15	06/24/23 20:28	
Acequinocyl	99.6	0.04	ppm	40-160	06/24/23 12:15	06/24/23 20:28	
Acetamiprid	101	0.04	ppm	60-120	06/24/23 12:15	06/24/23 20:28	
Aldicarb	98.2	0.04	ppm	60-120	06/24/23 12:15	06/24/23 20:28	
Azoxystrobin	116	0.04	ppm	60-120	06/24/23 12:15	06/24/23 20:28	
Bifenazate	116	0.04	ppm	60-120	06/24/23 12:15	06/24/23 20:28	
Bifenthrin	137	0.04	ppm	50-150	06/24/23 12:15	06/24/23 20:28	
Boscalid	96.9	0.04	ppm	60-120	06/24/23 12:15	06/24/23 19:43	
Carbaryl	98.9	0.04	ppm	60-120	06/24/23 12:15	06/24/23 20:28	
Carbofuran	108	0.04	ppm	60-120	06/24/23 12:15	06/24/23 20:28	
Chlorantraniliprole	115	0.04	ppm	60-120	06/24/23 12:15	06/24/23 20:28	
Chlorfenapyr	156	0.1	ppm	60-120	06/24/23 12:15	06/24/23 19:43	BSH
Chlorpyrifos	123	0.04	ppm	60-120	06/24/23 12:15	06/24/23 20:28	BSH
Clofentezine	91.9	0.04	ppm	60-120	06/24/23 12:15	06/24/23 20:28	
Cyfluthrin	88.5	0.1	ppm	50-150	06/24/23 12:15	06/24/23 19:43	
Cypermethrin	99.2	0.1	ppm	50-150	06/24/23 12:15	06/24/23 19:43	
Daminozide	70.7	0.04	ppm	60-120	06/24/23 12:15	06/24/23 20:28	
Diazinon	105	0.04	ppm	60-120	06/24/23 12:15	06/24/23 20:28	
Dimethoate	103	0.04	ppm	60-120	06/24/23 12:15	06/24/23 20:28	
Ethoprophos	104	0.04	ppm	60-120	06/24/23 12:15	06/24/23 20:28	
Etofenprox	121	0.04	ppm	50-150	06/24/23 12:15	06/24/23 20:28	
Etoxazole	110	0.04	ppm	60-120	06/24/23 12:15	06/24/23 20:28	
Fenoxycarb	110	0.04	ppm	60-120	06/24/23 12:15	06/24/23 20:28	
Fenpyroximate	105	0.04	ppm	60-120	06/24/23 12:15	06/24/23 20:28	
Fipronil	107	0.04	ppm	60-120	06/24/23 12:15	06/24/23 19:43	
Fonicamid	104	0.04	ppm	60-120	06/24/23 12:15	06/24/23 20:28	



Eric Wendt
Chief Science Officer - 6/29/2023



Quality Control Pesticide Analysis (Continued)

Batch: 2325099 - 203 (Continued)

LCS(2325099-BS1)							
Analyte	% Recovery	LOQ	Units	%Recovery Limits	Extracted	Analyzed	Notes
Fludioxonil	88.2	0.04	ppm	50-150	06/24/23 12:15	06/24/23 19:43	
Hexythiazox	144	0.04	ppm	60-120	06/24/23 12:15	06/24/23 20:28	BSH
Imazalil	106	0.04	ppm	60-120	06/24/23 12:15	06/24/23 20:28	
Imidacloprid	125	0.04	ppm	60-120	06/24/23 12:15	06/24/23 20:28	BSH
Kresoxim-methyl	105	0.04	ppm	60-120	06/24/23 12:15	06/24/23 19:43	
Metalaxyl	114	0.04	ppm	60-120	06/24/23 12:15	06/24/23 20:28	
Malathion	90.0	0.04	ppm	60-120	06/24/23 12:15	06/24/23 19:43	
Methiocarb	100	0.04	ppm	60-120	06/24/23 12:15	06/24/23 20:28	
Methomyl	102	0.04	ppm	60-120	06/24/23 12:15	06/24/23 20:28	
Myclobutanil	109	0.04	ppm	60-120	06/24/23 12:15	06/24/23 20:28	
Methyl parathion	85.6	0.04	ppm	50-150	06/24/23 12:15	06/24/23 19:43	
Naled	102	0.04	ppm	50-150	06/24/23 12:15	06/24/23 20:28	
MGK-264	102	0.04	ppm	50-150	06/24/23 12:15	06/24/23 19:43	
Oxamyl	109	0.04	ppm	60-120	06/24/23 12:15	06/24/23 20:28	
Paclobutrazol	105	0.04	ppm	60-120	06/24/23 12:15	06/24/23 20:28	
Phosmet	107	0.04	ppm	50-150	06/24/23 12:15	06/24/23 20:28	
Permethrins	94.6	0.04	ppm	50-150	06/24/23 12:15	06/24/23 19:43	
Piperonyl butoxide	112	1.0	ppm	60-120	06/24/23 12:15	06/24/23 20:28	
Prallethrin	113	0.04	ppm	60-120	06/24/23 12:15	06/24/23 20:28	
Propiconazole	90.3	0.04	ppm	60-120	06/24/23 12:15	06/24/23 19:43	
Propoxur	102	0.04	ppm	60-120	06/24/23 12:15	06/24/23 20:28	
Pyrethrins	99.0	0.5	ppm	60-120	06/24/23 12:15	06/24/23 20:28	
Pyridaben	104	0.04	ppm	50-150	06/24/23 12:15	06/24/23 20:28	
Spinosad	106	0.04	ppm	50-150	06/24/23 12:15	06/24/23 20:28	
Spiromesifen	90.5	0.04	ppm	60-120	06/24/23 12:15	06/24/23 20:28	
Spirotetramat	110	0.04	ppm	60-120	06/24/23 12:15	06/24/23 20:28	
Spiroxamine	107	0.04	ppm	60-120	06/24/23 12:15	06/24/23 20:28	
Tebuconazole	108	0.04	ppm	60-120	06/24/23 12:15	06/24/23 20:28	
Thiacloprid	113	0.04	ppm	60-120	06/24/23 12:15	06/24/23 20:28	
Thiamethoxam	119	0.04	ppm	60-120	06/24/23 12:15	06/24/23 20:28	
Trifloxystrobin	111	0.04	ppm	60-120	06/24/23 12:15	06/24/23 20:28	

Metals

Batch: 2325093 - 217

Blank(2325093-BLK1)							
Analyte	Result	LOQ	Units	%Recovery Limits	Extracted	Analyzed	Notes
Cadmium	< LOQ	0.08	ug/g		06/24/23 10:25	06/27/23 14:11	
Lead	< LOQ	0.08	ug/g		06/24/23 10:25	06/27/23 14:11	



Eric Wendt
Chief Science Officer - 6/29/2023



Quality Control Metals (Continued)

Batch: 2325093 - 217 (Continued)

Blank(2325093-BLK1)							
Analyte	Result	LOQ	Units	%Recovery Limits	Extracted	Analyzed	Notes
Arsenic	< LOQ	0.08	ug/g		06/24/23 10:25	06/27/23 14:11	
Mercury	< LOQ	0.04	ug/g		06/24/23 10:25	06/27/23 14:11	

LCS(2325093-BS1)							
Analyte	% Recovery	LOQ	Units	%Recovery Limits	Extracted	Analyzed	Notes
Cadmium	102	0.08	ug/g	80-115	06/24/23 10:25	06/27/23 14:13	
Lead	104	0.08	ug/g	80-115	06/24/23 10:25	06/27/23 14:13	
Arsenic	101	0.08	ug/g	80-115	06/24/23 10:25	06/27/23 14:13	
Mercury	105	0.04	ug/g	80-115	06/24/23 10:25	06/27/23 14:13	

Batch: 2326006 - 103

Blank(2326006-BLK1)							
Analyte	Result	LOQ	Units	%Recovery Limits	Extracted	Analyzed	Notes
Percent Moisture	0.240		%		06/26/23 17:31	06/26/23 17:31	

Blank(2326006-BLK2)							
Analyte	Result	LOQ	Units	%Recovery Limits	Extracted	Analyzed	Notes
Percent Moisture	0.200		%		06/26/23 17:31	06/26/23 17:31	

Reference(2326006-SRM1)							
Analyte	% Recovery	LOQ	Units	%Recovery Limits	Extracted	Analyzed	Notes
Percent Moisture	87.9		%	80-120	06/26/23 17:31	06/26/23 17:31	

Reference(2326006-SRM2)							
Analyte	% Recovery	LOQ	Units	%Recovery Limits	Extracted	Analyzed	Notes
Percent Moisture	94.3		%	80-120	06/26/23 17:31	06/26/23 17:31	

Batch: 2326011 - Microbials

Blank(2326011-BLK1)							
Analyte	Result	LOQ	Units	%Recovery Limits	Extracted	Analyzed	Notes
Salmonella	ND	0.00	cfu/g		06/26/23 14:42	06/28/23 13:50	
Total Aspergillus	ND	0.00	cfu/g		06/26/23 14:42	06/28/23 13:50	
Escherichia Coli	ND	0.00	cfu/g		06/26/23 14:42	06/28/23 13:50	

LCS(2326011-BS1)							
Analyte	% Recovery	LOQ	Units	%Recovery Limits	Extracted	Analyzed	Notes
Salmonella	100		cfu/g	99-101	06/26/23 14:42	06/28/23 13:50	
Total Aspergillus	100		cfu/g	99-101	06/26/23 14:42	06/28/23 13:50	
Escherichia Coli	100		cfu/g	99-101	06/26/23 14:42	06/28/23 13:50	

Batch: 2326021 - 215-Hemp

Blank(2326021-BLK2)							
Analyte	Result	LOQ	Units	%Recovery Limits	Extracted	Analyzed	Notes
alpha-Bisabolol	< LOQ	0.00025	%		06/27/23 12:23	06/27/23 22:11	
Camphene	< LOQ	0.00025	%		06/27/23 12:23	06/27/23 22:11	



Eric Wendt
Chief Science Officer - 6/29/2023



Quality Control Terpene Analysis (Continued)

Batch: 2326021 - 215-Hemp (Continued)

Blank(2326021-BLK2)							
Analyte	Result	LOQ	Units	%Recovery Limits	Extracted	Analyzed	Notes
Camphor	< LOQ	0.00025	%		06/27/23 12:23	06/27/23 22:11	
3-Carene	< LOQ	0.00025	%		06/27/23 12:23	06/27/23 22:11	
beta-Caryophyllene	< LOQ	0.00025	%		06/27/23 12:23	06/27/23 22:11	
Caryophyllene Oxide	< LOQ	0.00025	%		06/27/23 12:23	06/27/23 22:11	
alpha-Cedrene	< LOQ	0.00025	%		06/27/23 12:23	06/27/23 22:11	
Cedrol	< LOQ	0.00025	%		06/27/23 12:23	06/27/23 22:11	
Endo-fenchyl alcohol	< LOQ	0.00025	%		06/27/23 12:23	06/27/23 22:11	
Eucalyptol	< LOQ	0.00025	%		06/27/23 12:23	06/27/23 22:11	
Geraniol	< LOQ	0.00025	%		06/27/23 12:23	06/27/23 22:11	
Geranyl acetate	< LOQ	0.00025	%		06/27/23 12:23	06/27/23 22:11	
Guaiol	< LOQ	0.00025	%		06/27/23 12:23	06/27/23 22:11	
alpha-Humulene	< LOQ	0.00025	%		06/27/23 12:23	06/27/23 22:11	
Isoborneol	< LOQ	0.00025	%		06/27/23 12:23	06/27/23 22:11	
Isopulegol	< LOQ	0.00025	%		06/27/23 12:23	06/27/23 22:11	
Limonene	< LOQ	0.00025	%		06/27/23 12:23	06/27/23 22:11	
Linalool	< LOQ	0.00025	%		06/27/23 12:23	06/27/23 22:11	
beta-Myrcene	< LOQ	0.00025	%		06/27/23 12:23	06/27/23 22:11	
trans-Nerolidol	< LOQ	0.00025	%		06/27/23 12:23	06/27/23 22:11	
alpha-Pinene	< LOQ	0.00025	%		06/27/23 12:23	06/27/23 22:11	
beta-Pinene	< LOQ	0.00025	%		06/27/23 12:23	06/27/23 22:11	
Pulegone	< LOQ	0.00025	%		06/27/23 12:23	06/27/23 22:11	
Sabinene	< LOQ	0.00025	%		06/27/23 12:23	06/27/23 22:11	
Sabinene hydrate	< LOQ	0.00025	%		06/27/23 12:23	06/27/23 22:11	
gamma-Terpinene	< LOQ	0.00025	%		06/27/23 12:23	06/27/23 22:11	
alpha-Terpinene	< LOQ	0.00025	%		06/27/23 12:23	06/27/23 22:11	
Terpinolene	< LOQ	0.00025	%		06/27/23 12:23	06/27/23 22:11	
Valencene	< LOQ	0.00025	%		06/27/23 12:23	06/27/23 22:11	
Verbenone	< LOQ	0.00025	%		06/27/23 12:23	06/27/23 22:11	
trans-beta-Farnesene	< LOQ	0.00025	%		06/27/23 12:23	06/27/23 22:11	
A-Terpineol	< LOQ	0.00025	%		06/27/23 12:23	06/27/23 22:11	
cis-Nerolidol	< LOQ	0.00025	%		06/27/23 12:23	06/27/23 22:11	
Thymol	< LOQ	0.00025	%		06/27/23 12:23	06/27/23 22:11	
Terpinen-4-ol	< LOQ	0.00025	%		06/27/23 12:23	06/27/23 22:11	
Squalene	< LOQ	0.00025	%		06/27/23 12:23	06/27/23 22:11	
Safranal	< LOQ	0.00025	%		06/27/23 12:23	06/27/23 22:11	
Piperitone	< LOQ	0.00025	%		06/27/23 12:23	06/27/23 22:11	
Phytane	< LOQ	0.00025	%		06/27/23 12:23	06/27/23 22:11	
p-Cymene	< LOQ	0.00025	%		06/27/23 12:23	06/27/23 22:11	



Eric Wendt
Chief Science Officer - 6/29/2023



Quality Control Terpene Analysis (Continued)

Batch: 2326021 - 215-Hemp (Continued)

Blank(2326021-BLK2)							
Analyte	Result	LOQ	Units	%Recovery Limits	Extracted	Analyzed	Notes
Octyl Acetate	< LOQ	0.00025	%		06/27/23 12:23	06/27/23 22:11	
Nootkatone	< LOQ	0.00025	%		06/27/23 12:23	06/27/23 22:11	
Menthone	< LOQ	0.00025	%		06/27/23 12:23	06/27/23 22:11	
Menthol	< LOQ	0.00025	%		06/27/23 12:23	06/27/23 22:11	
Isobornyl Acetate	< LOQ	0.00025	%		06/27/23 12:23	06/27/23 22:11	
Farnesol 1	< LOQ	0.00025	%		06/27/23 12:23	06/27/23 22:11	
Carvone	< LOQ	0.00025	%		06/27/23 12:23	06/27/23 22:11	
alpha-Thujone	< LOQ	0.00025	%		06/27/23 12:23	06/27/23 22:11	
Alpha-Phellandrene	< LOQ	0.00025	%		06/27/23 12:23	06/27/23 22:11	
(+)-Borneol	< LOQ	0.00025	%		06/27/23 12:23	06/27/23 22:11	
(-)-Borneol	< LOQ	0.00025	%		06/27/23 12:23	06/27/23 22:11	
Carvacrol	< LOQ	0.00025	%		06/27/23 12:23	06/27/23 22:11	
trans-beta-Ocimene	< LOQ	0.00025	%		06/27/23 12:23	06/27/23 22:11	
Cis-beta-Ocimene	< LOQ	0.00025	%		06/27/23 12:23	06/27/23 22:11	
Citral	< LOQ	0.00025	%		06/27/23 12:23	06/27/23 22:11	
Citronellol	< LOQ	0.00025	%		06/27/23 12:23	06/27/23 22:11	
Farnesol 2	< LOQ	0.00025	%		06/27/23 12:23	06/27/23 22:11	
Cis-beta-Farnesene	< LOQ	0.00025	%		06/27/23 12:23	06/27/23 22:11	

Reference(2326021-SRM2)							
Analyte	% Recovery	LOQ	Units	%Recovery Limits	Extracted	Analyzed	Notes
beta-Caryophyllene	73.2	0.00025	%	70-130	06/27/23 12:23	06/27/23 22:30	
alpha-Humulene		0.00025	%	70-130	06/27/23 12:23	06/27/23 22:30	
Limonene		0.00025	%	70-130	06/27/23 12:23	06/27/23 22:30	
beta-Myrcene		0.00025	%	70-130	06/27/23 12:23	06/27/23 22:30	



Eric Wendt
Chief Science Officer - 6/29/2023



Notes and Definitions

Regulatory Compliance samples were collected onsite at facility according to ORELAP-SOP-001 and ORELAP-SOP-002 and following Sampling Plan FN117. Quality Control samples were tested as received. Results do not include uncertainty of measurements. Available upon request.

- ATM Non-cannabis matrix related interference or suppression of Internal standard
- BLI Baseline Interference - Cannabinoid peak interference in chromatographic baseline affecting QC recovery .
- BLK Analyte detected in method blank, but not associated samples.
- BSH Blank Spike High - Blank Spike recovery above method limit. no detections in samples.
- BSL Blank Spike Low - Blank Spike recovery below lower method limit, analyte chromatography reviewed manually for all samples.
- CBD Interference due to co-elution
- CV1 CBD matrix interference on GC Pest chromatography
- CV2 CCV was above acceptance criteria, Non-detect samples are considered acceptable.
- INF CCV was below acceptance criteria, sample still exceeds regulatory limit.
- ISH One or more QC falls outside acceptance criteria. Data entered into LIMS for informational purposes only.
- ISL Internal Standard concentration is above acceptance criteria.
- MSH Internal Standard concentration is below acceptance criteria.
- MSI Matrix Spike High - Matrix Spike recovery above method limits.
- MSL Matrix Spike Interference - Matrix spike source sample contains analyte hit above calibration affecting recovery accuracy in Matrix Spike.
- TPP
- U Matrix Spike Low - Matrix Spike recovery below lower method limit, analyte chromatography reviewed manually for all samples.
Internal Standard concentration outside control limit due to matrix interference



Eric Wendt
Chief Science Officer - 6/29/2023

These results relate only to the sample included on this report. The report may not be reproduced except in full, without the written permission of Green Leaf Lab.

This is for informational testing and is not compliance testing. Lab results apply to the sample as received.