



FRAG4471

RECIPE - 30CL

WARM WOODS & CASHMERE IN 464 (NOW MADE IN EUROPE)

WWW.CANDLE-SHACK.CO.UK

CANDLE SHACK

DESCRIPTION

WARM WOODS & CASHMERE

TOP NOTES - SANDALWOOD,
SAFFRON

HEART NOTES - CEDARWOOD,
CLOVE

BASE NOTES - AMBER,
MUSK, VANILLA

FRAG4471

INGREDIENTS FOR EACH CANDLE

1x 30cl Glass Jar
22g of Warm Woods & Cashmere Fragrance Oil
198g of Golden Wax 464 (Now Made In Europe)
1x CL14 Wick
1x 15mm Adhesive Wick Pad
1x Three Jar Wick Centering Tool

WAX

Made by global wax giant AAK in Sweden, Golden Wax 464 is an excellent soy container wax. It offers a powerful hot and cold scent throw, fantastic glass adhesion, smooth resets and is produced under rigorous ethical and environmental standards.

VESSEL

Our Lotti 30cl glass is manufactured in Italy and meets the highest standards of clarity and tolerance.

Height: 90mm

Diameter: 78mm

Internal height: 75mm

WICK

Crafted from unbleached cotton and interwoven with a linen thread, CL candle wicks are innovative flat wicks designed to minimise afterglow and smoking while maintaining rigidity. All wicks are 110mm long with a thin paraffin coating for stability.

USAGE RECOMMENDATIONS

- We recommend working at an ambient temperature of 18 to 25°C.
- We recommend heating 464 to 70°C to melt.
- Add the fragrance at 65-70°C and stir until homogeneous.
- The mixture is ready to pour at 60-70°C into jars at room temperature.
- If the top is uneven once set, you can flash the surface with a heat gun.
- Leave the candle to cure for at least 2 days at 18 to 25°C for consistent results.

DISCLAIMER

Each report shows test results for a set of candles made by Candle Shack's R&D team for that particular recipe. The test reports are not a guarantee that all candles made to the recipe will burn in exactly the same way. Variables such as ambient temperature, air flow, or the manufacturing process can affect the burning profile of a candle, so it is recommended that candle makers conduct their own testing to ensure that they are satisfied with the performance of their product.

CANDLE SHACK

Candleshack Ltd, Unit A, West Carron Works,
Stenhouse Road, Carron, Stirlingshire, FK2 8DR

Technical report on a test set of candles made in Candle Shack R&D department for sooting
behaviour testing and fire safety testing

Date of Report: 22/02/24

Testing Period: 07/02/2024 - 22/02/2024

Sample Ref	RCP0170X-1	No. of Samples	3
Candle Name	30cl Warm Woods & Cashmere Candle, 10% in EU464		
Description	220g Soy Wax Fragranced Candle		
Fragrance	Warm Woods & Cashmere Fragrance Oil	Weight per candle	22g
Wax	GoldenWax 464 (now made in Europe)	Weight per candle	198g
Colour	Off White	Height	92mm
Wick Type	CL14	Top Diameter (ext)	82mm
Wick Positioning	Centred	Top Diameter (int)	76mm
Surface Defects	None	Base Diameter	76mm

TECHNICAL REPORT

Part 1: SPECIFICATION FOR SOOTING BEHAVIOUR

To evaluate the performance of a test set of candles in a controlled environment against the requirements of BS EN 15426:2018 (Candles. Specification for sooting behaviour)

Part 2: SPECIFICATION FOR FIRE SAFETY

To evaluate the performance of a test set of candles in a controlled environment against the requirements of BS EN 15493:2019 (Candles. Specification for fire safety)



CANDLE SHACK

Part 1: SPECIFICATION FOR SOOTING BEHAVIOUR

Requirement

When tested in accordance with clause 9 of EN 15426:2018, the average soot index per hour from three tests (samples) shall be less than 1.0/h

The room temperature during testing was 20±5°C

Wicks were trimmed to 5mm before lighting.

Cycles: 3 x 240 ± 5 min cycles with >60min pause between cycles)

Soot testing was performed in wire mesh cylinder Type 2 (Diameter: 300 ± 10 mm)

Sample Ref.	Total burn time t_m (h)	Hourly soot index Si_h	Average soot index per hour Si_h	Result
RCP0170X-1.1	12.00	0.13	0.31	PASS
RCP0170X-1.2	12.00	0.37		
RCP0170X-1.3	12.00	0.43		



CANDLE SHACK

Part 2: SPECIFICATION FOR FIRE SAFETY

Test Property	Test Method	Test Requirements	Result
Stability	EN 15493:2019 4.1 (Visual Check)	Candle should not tip over when placed on a 10° incline plane	PASS
Secondary Ignition	EN 15493:2019 4.2 (Visual Check)	No secondary ignition shall occur for more than 10 s	PASS
Flame Height	EN 15493:2019 4.3 (Measurement)	The flame height for all candle types, except for tea lights, shall not exceed 75mm. The flame height for tea lights shall not exceed 30mm	PASS Maximum: 30 mm
Behaviour after extinguishing	EN 15493:2019 4.5.1 (Visual Check)	After extinguishing the candle shall not spontaneously re-light	PASS
	EN 15493:2019 4.5.2 (Measurement)	The wick shall not continue to glow or smoke for an average time of more than 30 s after extinguishing	PASS Average: 8 s
Container Candles	EN 15493:2019 4.6 (Visual Check)	The container shall not crack or break at any time throughout the burning test	PASS

The room temperature during testing was 20±5°C
Wicks were trimmed to 5mm before lighting.

Candle Performance (240 ± 5 min cycles with >60min pause between cycles)

Sample Ref.	Gross Weight (g)	Total Wax Consumed (g)	*Total Burning Time (h)	Wax Consumption Rate (g/h)
RCP0170X-1.1	546.6	202.8	40.0	5.07
RCP0170X-1.2	548.5	200.1	40.0	5.00
RCP0170X-1.3	538.8	190.6	40.0	4.77

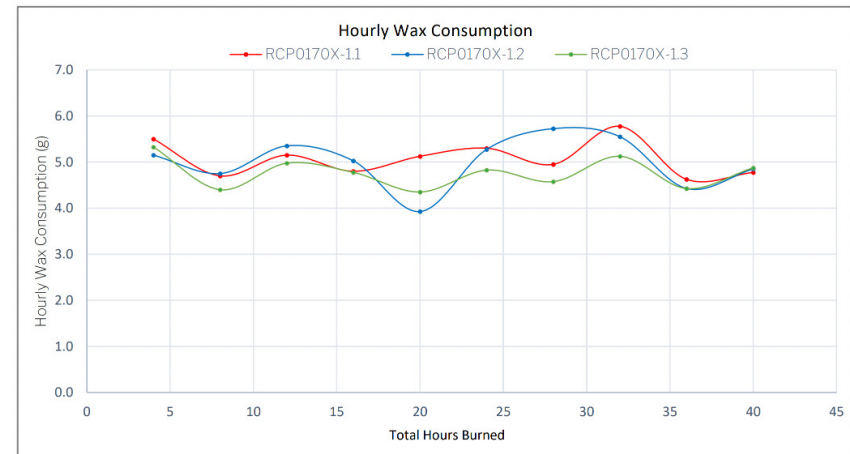
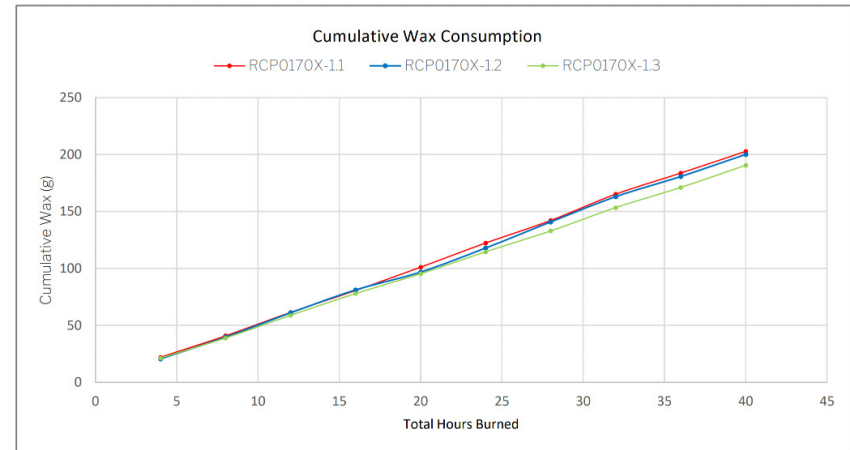
*If a candle self-extinguishes during the final burn cycle, the time of self-extinguishing is estimated.

Notes and Discussion:



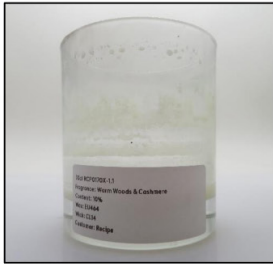
CANDLE SHACK

CHARTS

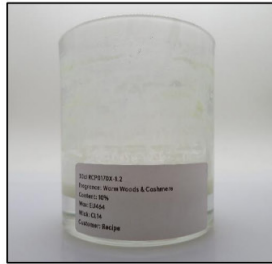


CANDLE SHACK

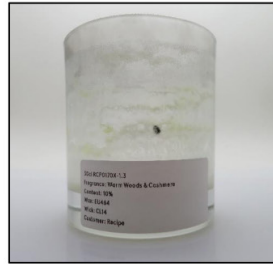
IMAGE GALLERY



End of Burn Front - Sample 1



End of Burn Front - Sample 2



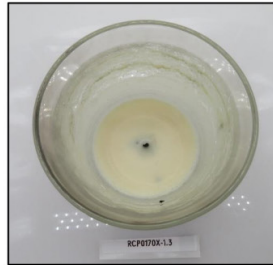
End of Burn Front - Sample 3



End of Burn Top - Sample 1



End of Burn Top - Sample 2



End of Burn Top - Sample 3

END OF REPORT

Patrycja Krajewska

Patrycja Krajewska
Development Technologist

