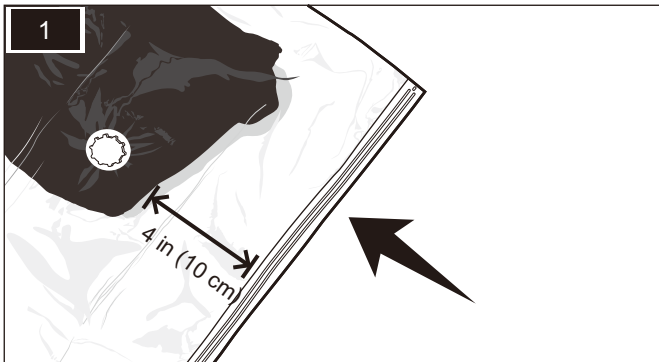
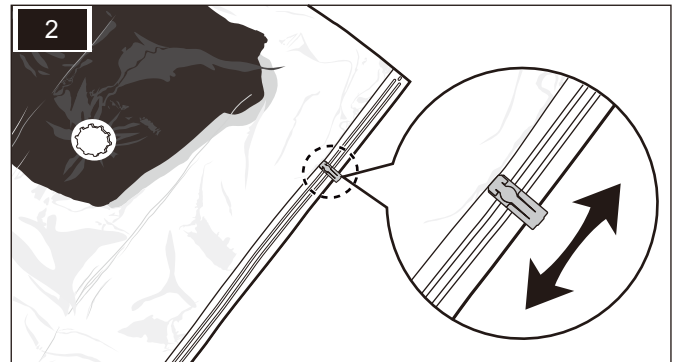


# Operation Manual

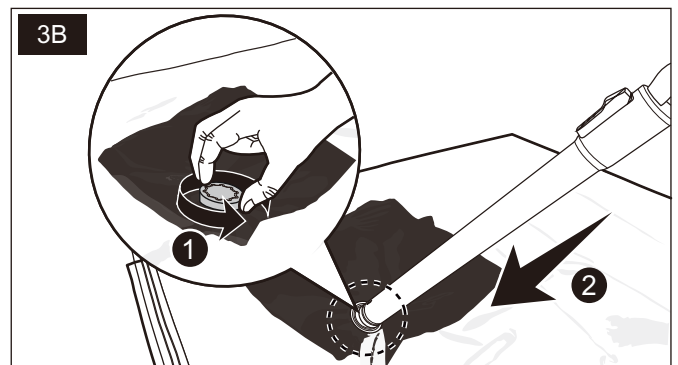
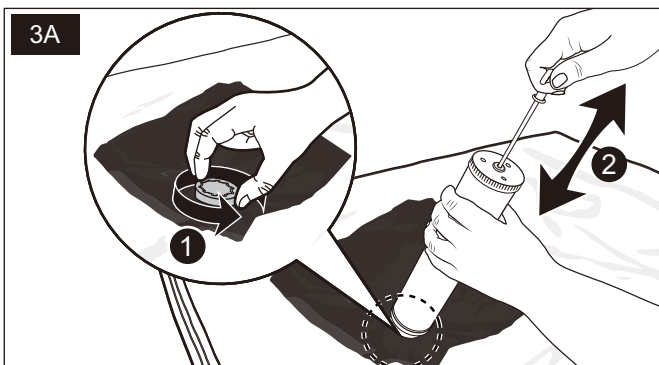
## Queen mattress topper



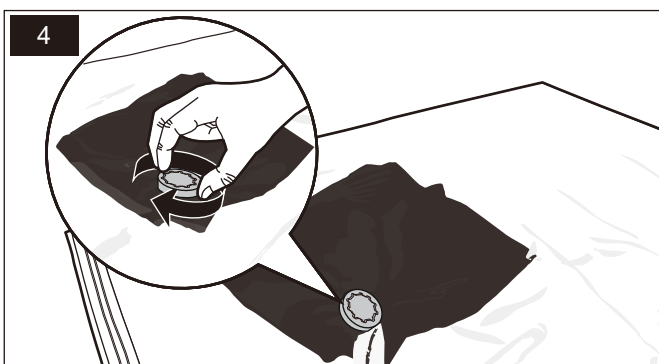
Place the mattress topper into the bag, leave 4" (10 cm) space from the seal (Fig. 1).



Seal the bag with the zipper, which need to hold one side of the closing edge and firmly slide the zipper clip along the edge for several times. (Fig. 2).



Remove the white cap and vacuum the air using the hand pump (Fig. 3a) or a vacuum cleaner (Fig.3b).



Tighten the white cap after vacuuming (Fig. 4).

### Important Safeguards

- Risk of suffocation! Keep any packaging materials away from children these materials are a potential source of danger , e.g. suffocation.
- Risk of choking! The product contains small parts. Keep them away from children.
- Overfilling can cause the bag to re-inflate.
- Lay the mattress topper as neat and flat as possible for more compressed results.
- Do not remove the rubber piece inside the air valve. Removing it causes the bags to re-inflate.
- Avoid storing bags near sharp objects or heat sources. Piercing the bag will cause it to re-inflate.