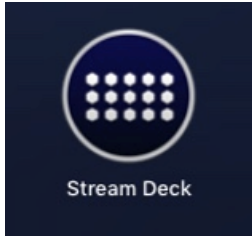


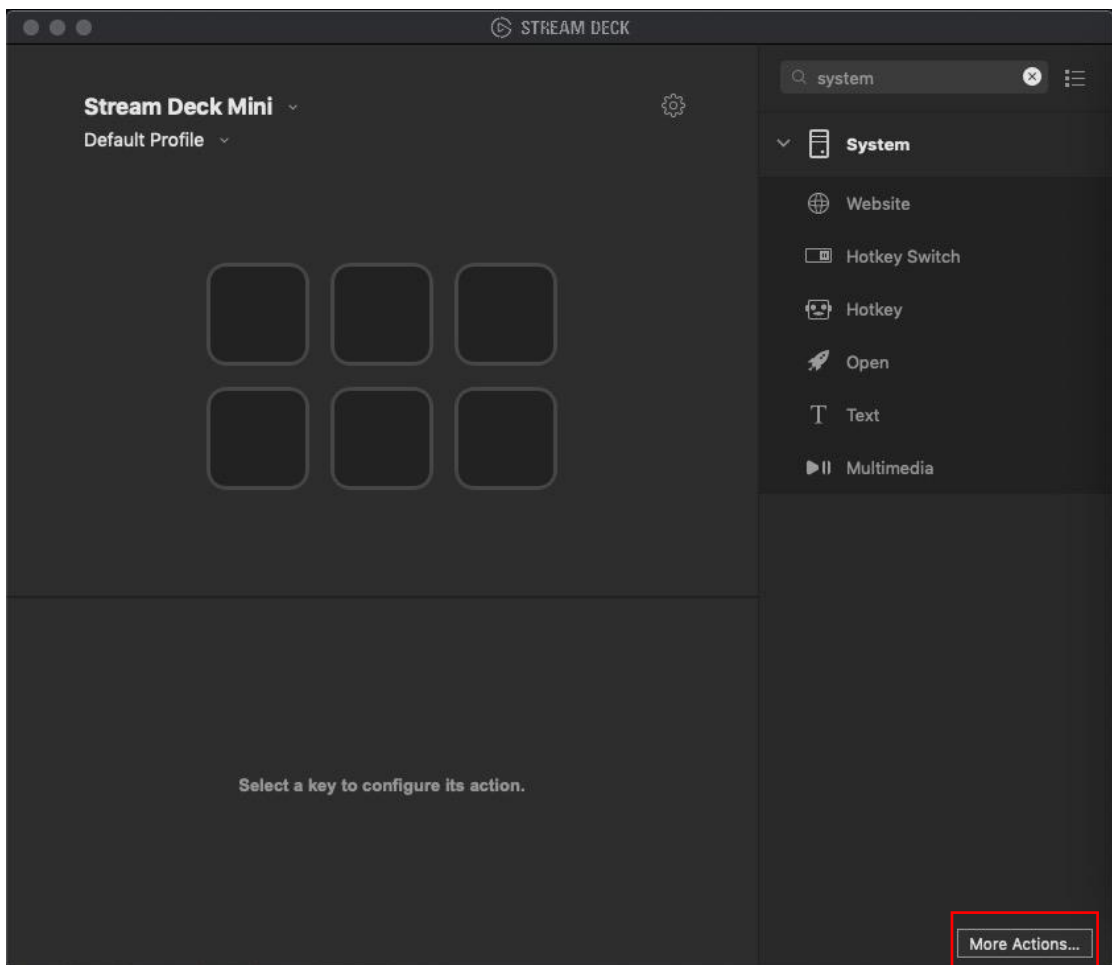
How to Control Cololight in Stream Deck

1. Download and install the latest Stream Deck software from:

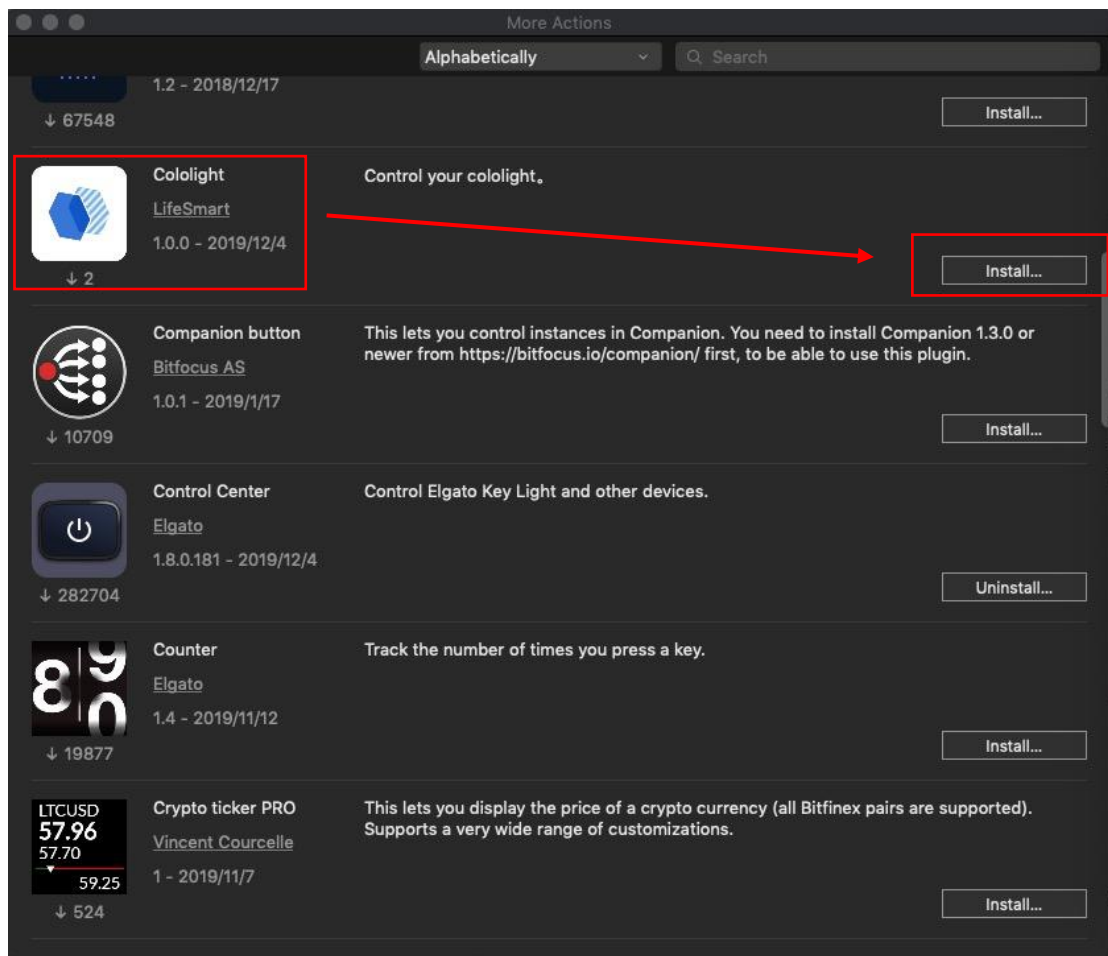
<https://www.elgato.com/en/gaming/downloads>



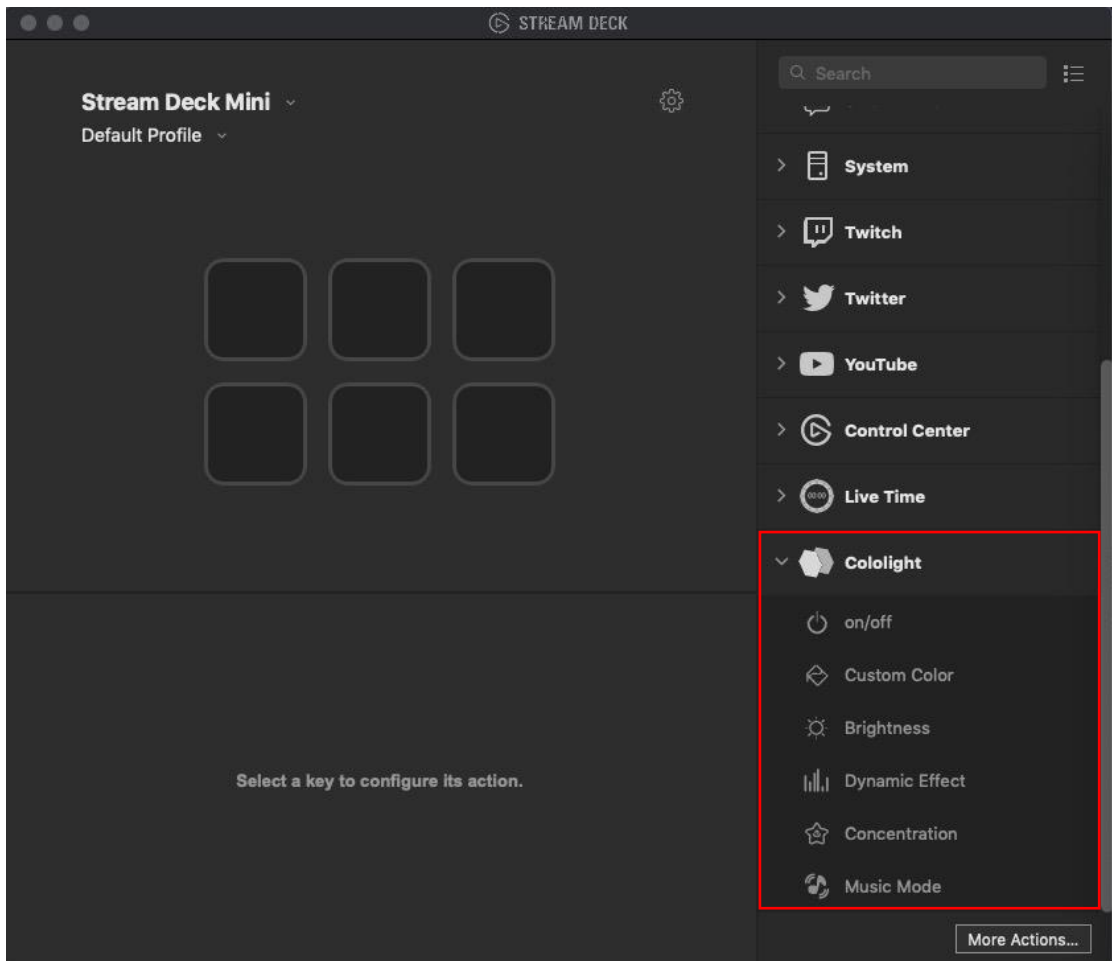
2. Double click the software icon to run it, click "More Actions" on the bottom right corner, the interface is like:



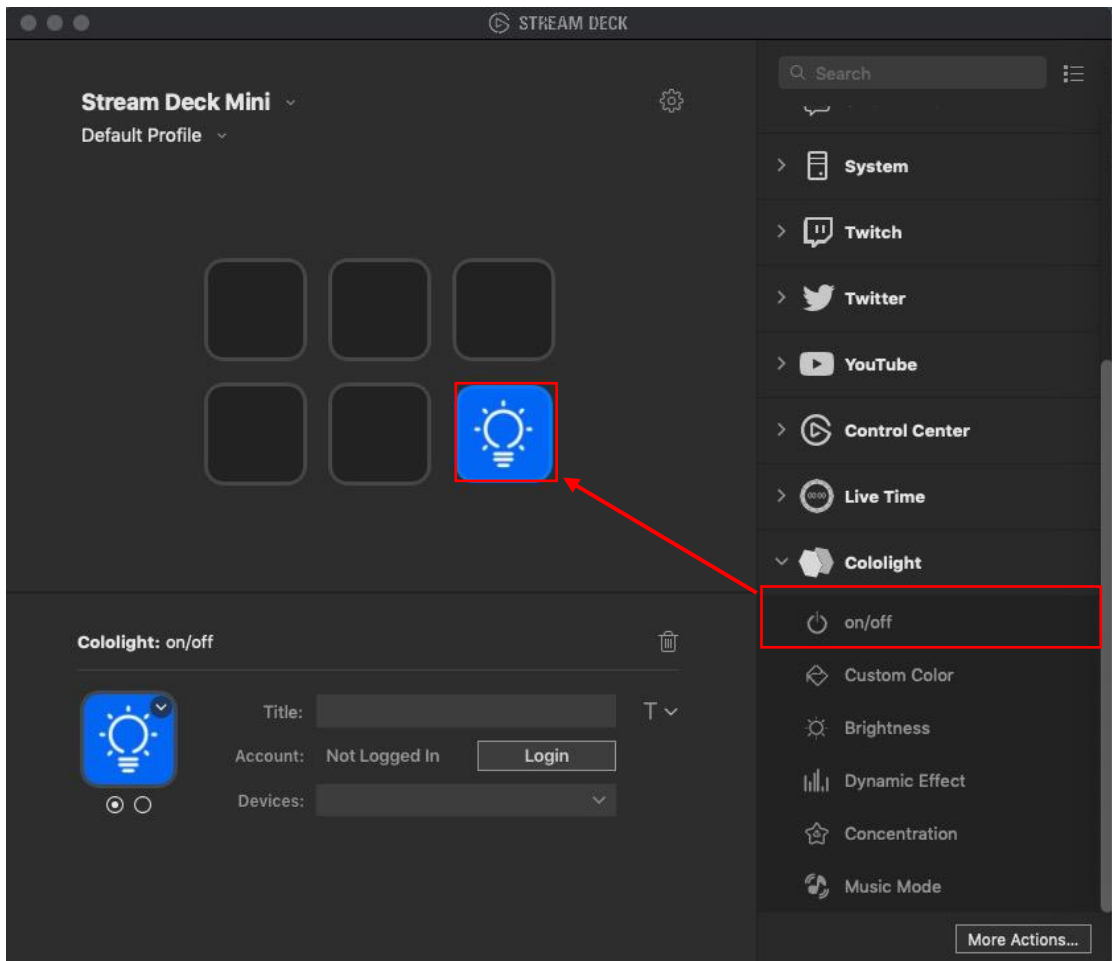
3. In the skill library search Cololight, click install:



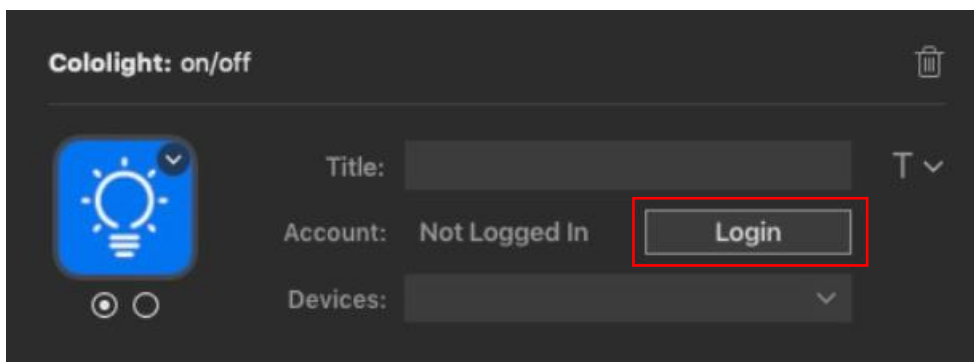
4. After installing, cololight functions will appear on the right hand side of the software:

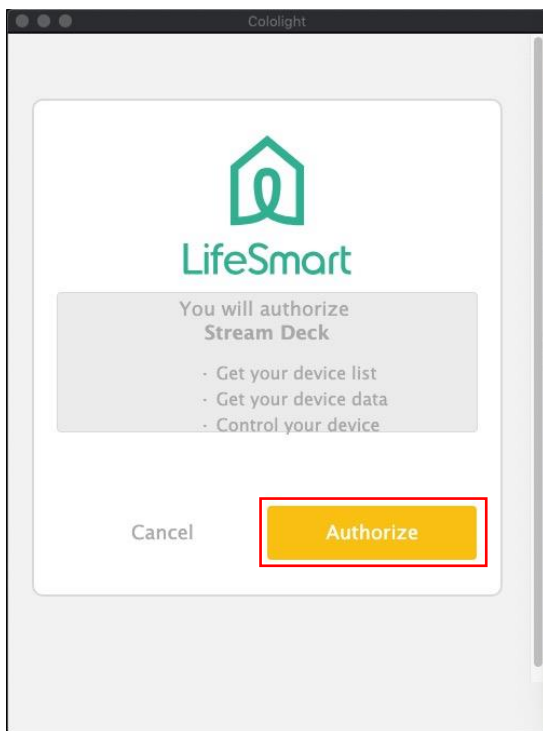
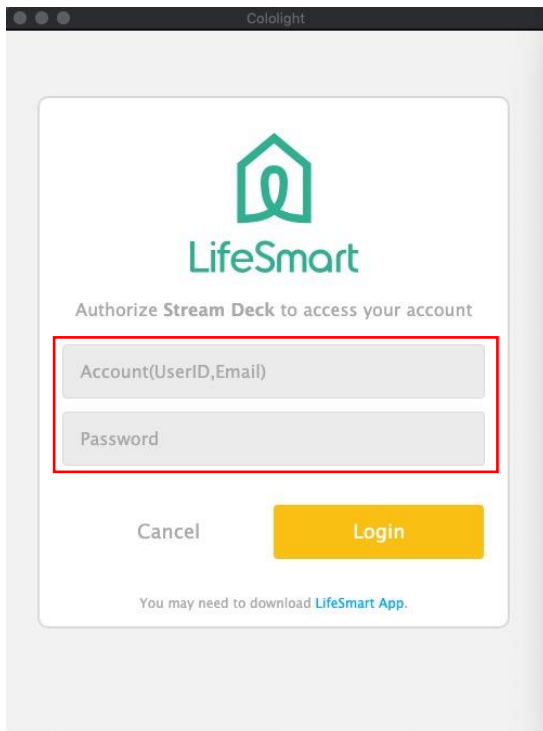


5. Drag and place a cololight function to one of the blocks, for example on/off:

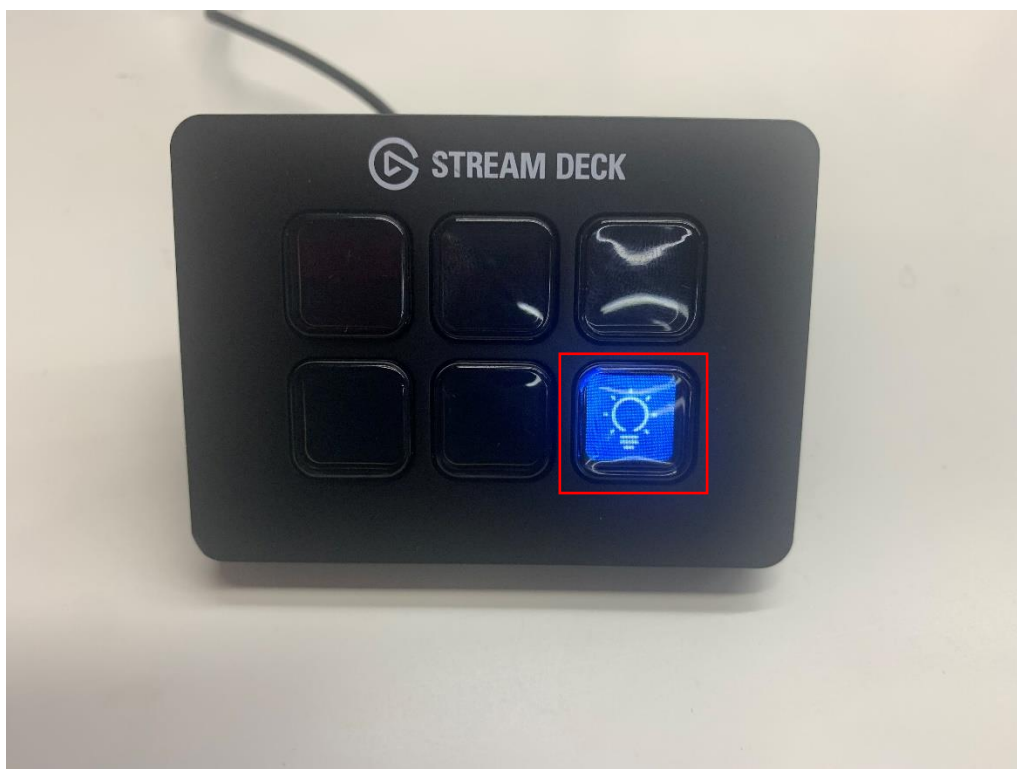
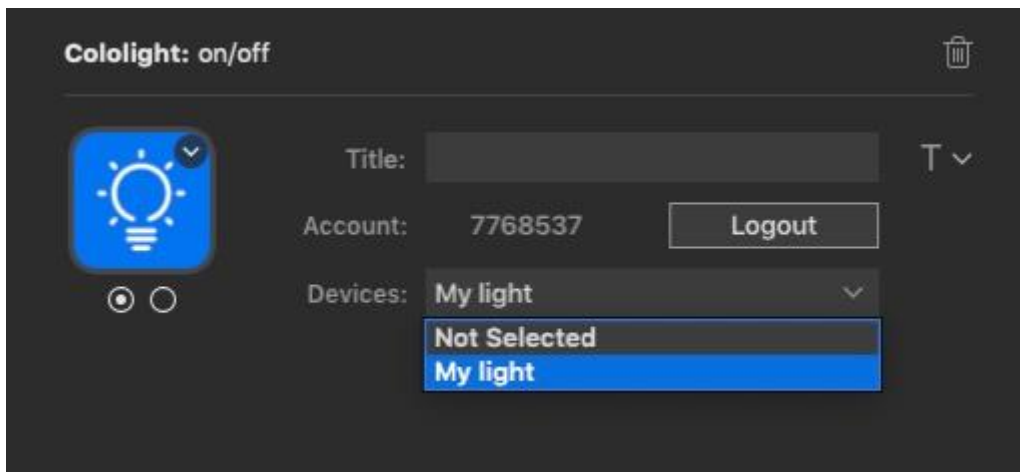


6. Click "Login" , input Cololight app account details in the next pop-up window and click authorize:





7. After log in, select a light which is already added to the account, now you can click the button on the Stream Deck device to control on/off status of the light:



8. Drag more function to the empty blocks and enjoy with Cololight control:

