

Collection

20

21

e
n
g
l
i
s
h



STAY
SALTY

c
a
t
a
l
o
g

 MANERA

MANERA.COM

SUMMARY

01 .	NEOPRENE	5	
	02 .	HARNESS	8
	03 .	BOARDBAGS	11
04 .	ACCESSORIES	14	
	05 .	APPAREL	17
	06 .	TECHNOLOGIES	20

THICKNESS REPARTITION - 25

COLORS SHADES - 26

OUR STORY - 27

SALTY IS A FEELING

It's getting wild on the ocean, the sea spray all over our faces.
It's part of who you become when you're out there, lost with friends.
It's the salt encrusted in us after a long day playing with the waves.
After shower the salt is gone, but the feeling stays there.

s
t
a
y

s
a
l
t
y



s
t
a
y

f
r
e
e



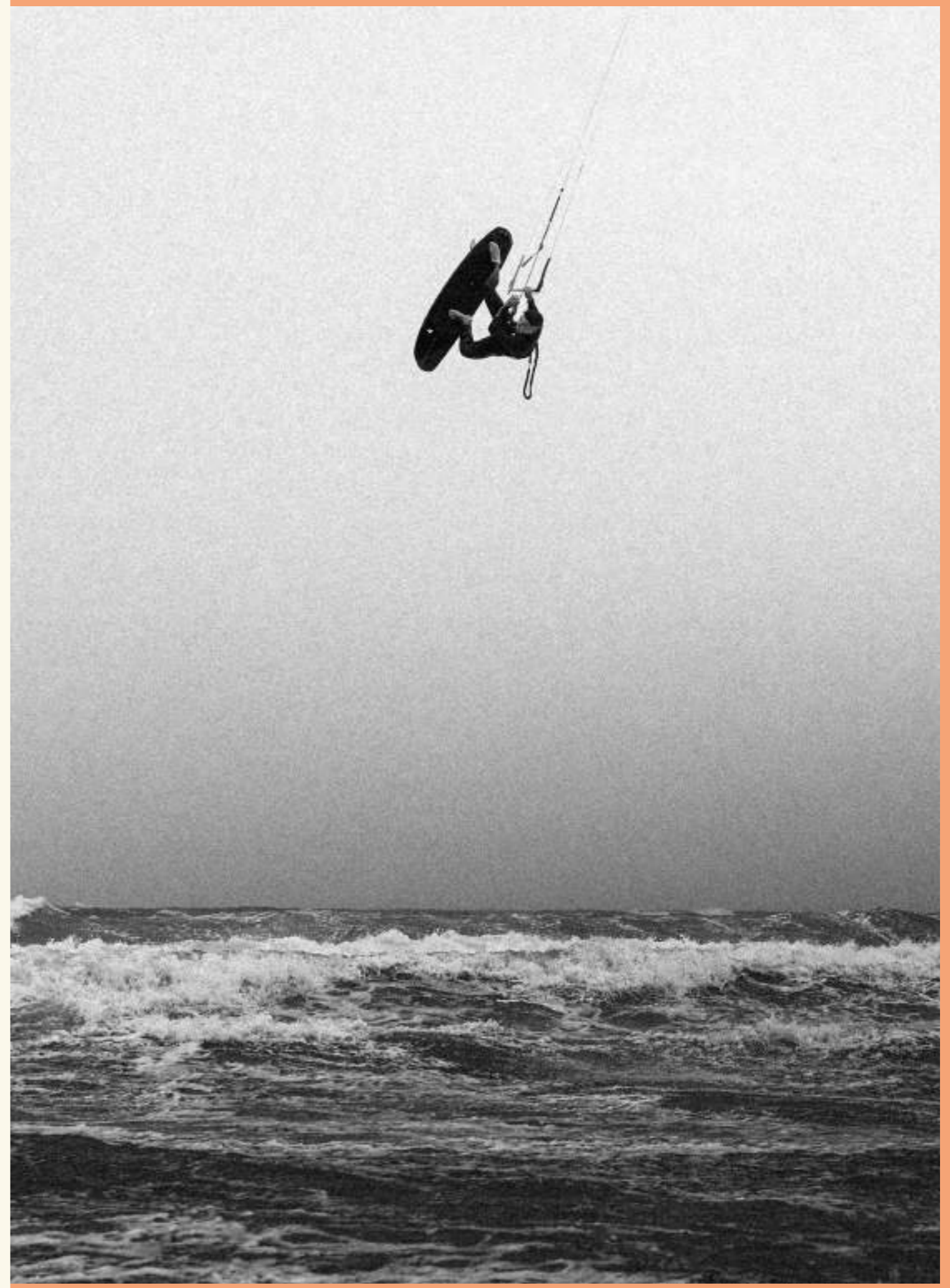
NEOPRENE

n
e
w



c
o
l
l
e
c
t
i
o
n

20
21



Experience the fit of an innovative 3D pattern-making.



Warmth & comfort

NEOPRENE

OVERVIEW

Men

Women

METEOR MAGMA

METEOR X10D

METEOR MAGMA



5.4.3

MAGMA HOODED - FZ
Ref. 22211-0101
Colors. BLACK



5.4.3

MAGMA - FZ
Ref. 22211-0102
Colors. BLACK



5.4.3

X10D - FZ
Ref. 22211-0202
Colors. SLATE / BLACK



4.3

X10D - FZ
Ref. 22211-0203
Colors. BLACK



5.4.3

MAGMA - FZ
Ref. 22211-1002
Colors. BLACK

NEW . SEAFARER

NEW . SEAFARER



5.3

SEAFARER - FZ
Ref. 22211-0302
Colors. CASCADE
/ ANTHRACITE



4.3

SEAFARER - FZ
Ref. 22211-0303
Colors. STEEL
/ ANTHRACITE



3.2

SEAFARER - FZ
Ref. 22211-0304
Colors. ANTHRACITE



2.2

SEAFARER - FZ
Ref. 22211-0306
Colors. ANTHRACITE



3.2

SEAFARER - BZ
Ref. 22211-0305
Colors. CASCADE



5.3

SEAFARER - FZ
Ref. 22211-3002
Colors. CASCADE



4.3

SEAFARER - FZ
Ref. 22211-3003
Colors. PEWTER



3.2

SEAFARER - BZ
Ref. 22211-3005
Colors. MARINA



5.3

SEAFARER - BZ
Ref. 22211-0502
Colors. ANTHRACITE



5.3

SEAFARER - BZ
Ref. 22211-5002
Colors. ANTHRACITE

SIZES

MEN XS-S-M-ML-L-XL-XXL

WOMEN XS-S-M-L-XL

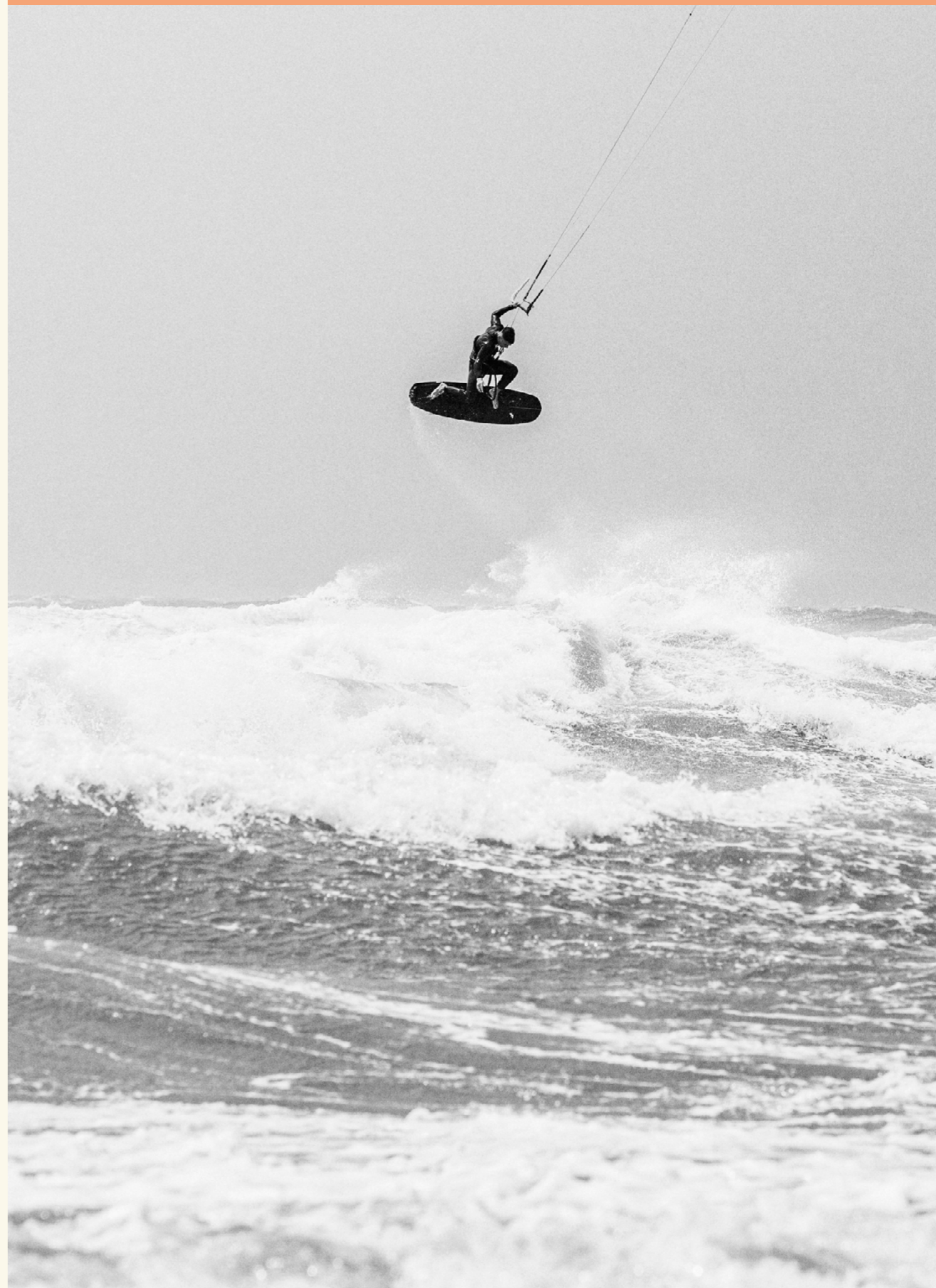
HARNESS

n
e
w

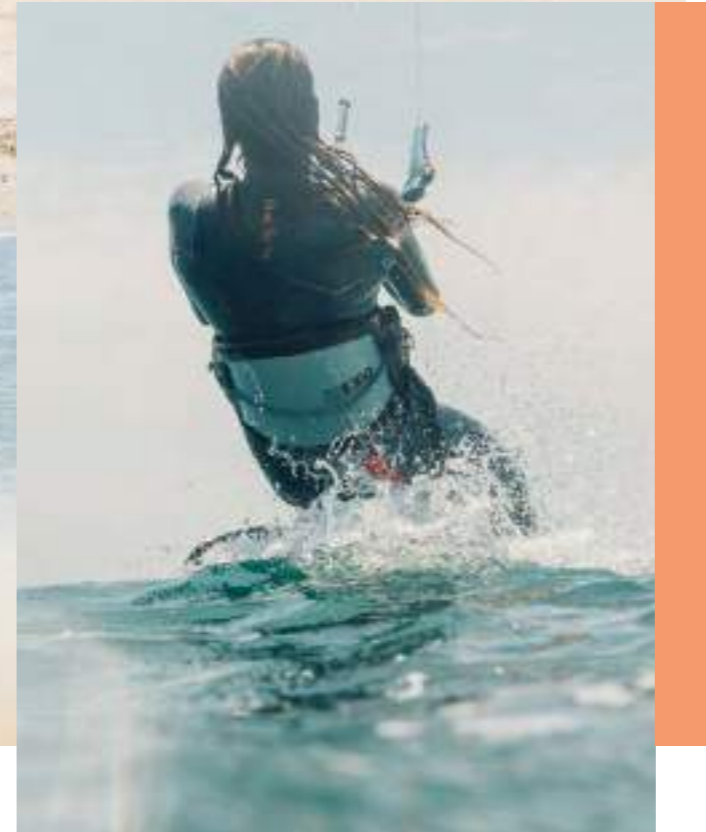


c
o
l
l
e
c
t
i
o
n

20
21



**Made to back-up
your every move.**



Support & adaptability

HARNESS

OVERVIEW



BLACK

ECLIPSE

Ref. 22202-0100
 Sizes. XS-S-M-L-XL
 Colors. BLACK / STEEL BLUE

STIFFNESS	90%
LIGHTNESS	95%
DURABILITY	95%



STEEL BLUE



GRAPHITE

EXO2. NEW

Ref. 22212-0200
 Sizes. XS-S-M-L-XL

Colors. GRAPHITE / PEWTER

STIFFNESS	80%
LIGHTNESS	95%
DURABILITY	90%



PEWTER



SLIDING HOOK

Ref. 22202-4001
 Sizes. 24CM - 28CM - 32CM
 (XS-S) - (M-L) - (XL-XXL)
 Colors. BLACK



ROPES

Ref. 22202-4002
 Sizes. 24CM - 28CM - 32CM
 (XS-S) - (M-L) - (XL-XXL)
 Colors. BLACK



KITE KNIFE

Ref. 22202-5001
 Sizes. UNIQUE SIZE
 Colors. BLACK



SAILOR BLUE

UNION

Ref. 22202-0300
 Sizes. XS-S-M-L-XL-XXL
 Colors. SAILOR BLUE / JERRY
 YELLOW / BORDEAUX

STIFFNESS	30%
LIGHTNESS	100%
DURABILITY	90%



JERRY YELLOW



BORDEAUX

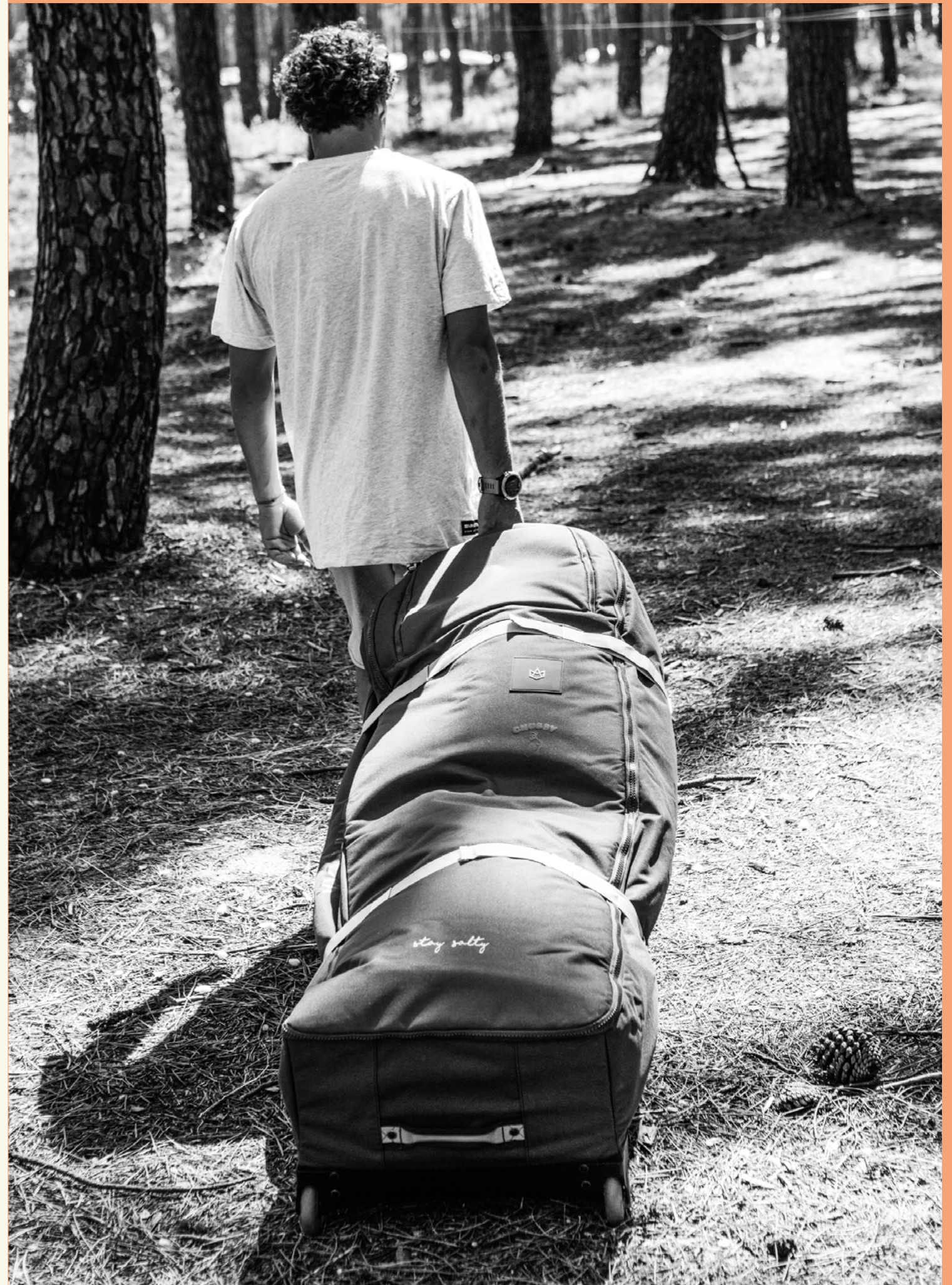
BOARDBAGS

n
e
w



c
o
l
l
e
c
t
i
o
n

20
21



Grab the best adventure partner out there.



Resist & protect

BOARDBAGS

OVERVIEW

BOARDBAGS



CHUBBY WHEELS

Ref. 22203-0201
 Sizes. 150 x 32 x 47CM
 Weight. 4.7KG
 Colors. SLATE - CREME



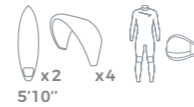
CHUBBY LIGHT

Ref. 22203-0202
 Sizes. 150 x 30 x 47CM
 Weight. 2.7KG
 Colors. SLATE - CREME



747 WHEELS . NEW

Ref. 22203-0203
 Sizes. 220 x 30 x 60CM
 Weight. 5.65KG
 Colors. SLATE - CREME



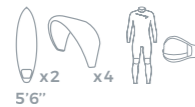
747 WHEELS

Ref. 22203-0203
 Sizes. 190 x 30 x 54CM
 Weight. 5.5KG
 Colors. SLATE - CREME



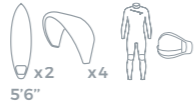
747 WHEELS

Ref. 22203-0203
 Sizes. 175 x 30 x 54CM
 Weight. 5.35KG
 Colors. SLATE - CREME



747 LIGHT . NEW

Ref. 22203-0204
 Sizes. 220 x 26 x 60CM
 Weight. 3.2KG
 Colors. SLATE - CREME



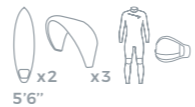
747 LIGHT

Ref. 22203-0204
 Sizes. 190 x 26 x 54CM
 Weight. 3.15KG
 Colors. SLATE - CREME



747 LIGHT

Ref. 22203-0204
 Sizes. 175 x 26 x 54CM
 Weight. 3.1KG
 Colors. SLATE - CREME



COMPACT 5'3"

Ref. 22203-0104
 Sizes. 170 x 56CM
 Weight. 1.1KG
 Colors. SLATE - CREME



TWIN-TIP

Ref. 22203-0101
 Sizes. 150x55CM
 Weight. 1KG
 Colors. SLATE - CREME



SURF 5'6" / 6'0" / 6'5" / 7'2" . NEW

Ref. 22203-0105 / 22203-0106
 22203-0107 / 22203-0108
 Sizes. 170 x 55CM / 180 x 60CM
 200 x 65CM / 220 x 70CM
 Weight. 1.2KG
 Colors. SLATE - CREME



FOIL 5'3"

Ref. 22203-0103
 Sizes. 165 x 55CM
 Weight. 1.1KG
 Colors. SLATE - CREME



POCKET 4'3"

Ref. 22203-0102
 Sizes. 135 x 55CM
 Weight. 0.9KG
 Colors. SLATE - CREME



WING 5'7" / 6'2" . NEW

Ref. 22203-0109 / 22203-0110
 Sizes. 175 x 78CM / 185 x 88CM
 Weight. 0.9KG
 Colors. SLATE - CREME



KITE FOIL BOX

Ref. 22203-0303
 Sizes. 310 x 1100MM
 Weight. 1.45KG
 Colors. SLATE - CREME



SURF FOIL BOX

Ref. 22203-0304
 Sizes. 560 x 870MM
 Weight. 1.15KG
 Colors. SLATE - CREME



FOIL COVERS

Ref. 22203-0302
 Sizes. 680 / 840 / 1000MM
 Weight. 1.45KG
 Colors. SLATE - CREME



MAST COVERS

Ref. 22203-0301
 Sizes. 650 / 750 / 850 / 1050MM
 Colors. SLATE - CREME



BIGGIE 160L

Ref. 22203-0205
 Sizes. 85 x 33 x 58CM
 Weight. 2.15KG
 Colors. SLATE - CREME



DUFFLE BAG 45L

Ref. 22203-0402
 Sizes. 65 x 30 x 23CM
 Colors. ANTHRACITE - SUEDE



DAY BAG 20L

Ref. 22203-0401
 Sizes. 47 x 30 x 15CM
 Colors. ANTHRACITE - SUEDE

FOILBAGS

TRAVELBAGS

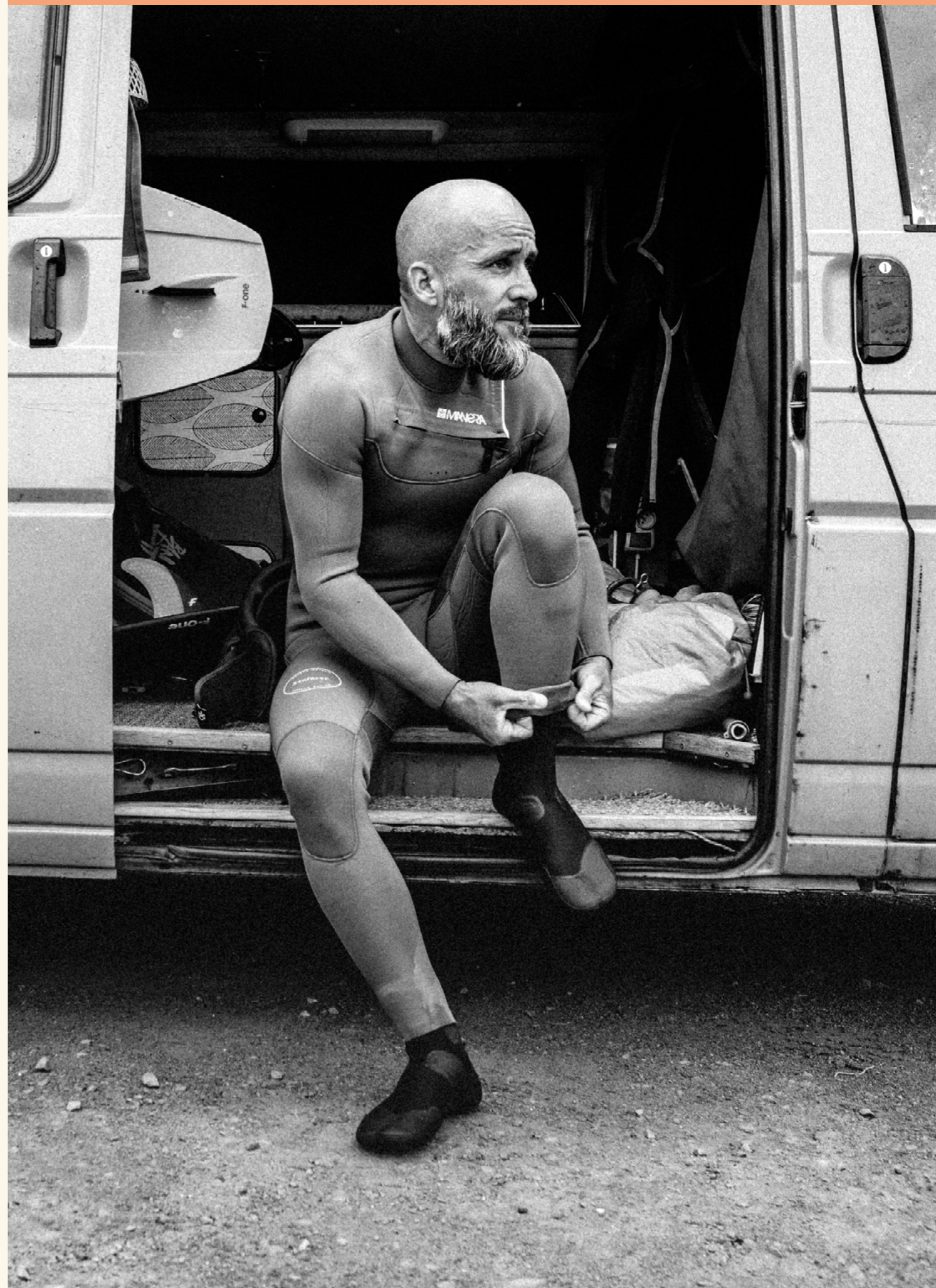
ACCESSORIES

n
e
w



c
o
l
l
e
c
t
i
o
n

20
21



**Your everyday essentials
on and off the water.**



Protect & comfort

ACCESSORIES

OVERVIEW

TECHNICAL ACCESSORIES



RAIN JACKET . NEW
Ref. 22215-0500
Sizes. S-M-L-XL-XXL
Colors. SLATE



BLIZZARD JACKET . NEW
Ref. 22215-0300
Sizes. S-M-L-XL-XXL
Colors. JET BLACK



WETSHIRT
Ref. 22215-0400
Sizes. S-M-L-XL
Colors. JET BLACK



BOOM VEST
Ref. 22205-0100
Sizes. S-M-L-XL
Colors. SLATE BLACK - ALLOY
BLUE / BLACK



X10D VEST
Ref. 22205-0200
Sizes. S-M-L-XL
Colors. INK BLUE / BLACK



2.5
MM

MAGMA HOOD
Ref. 22201-0807
Sizes. S-M-L-XL
Colors. BLACK



2.5
MM

MAGMA GLOVES
Ref. 22201-0607
Sizes. S-M-L-XL
Colors. BLACK



5.0
MM

MAGMA BOOTS . NEW
Ref. 22211-1102
Sizes. [EU] 37-38-39-40-41-42-43-44-45
[US] 5-5.5-6-7-8-9-9.5-10-11
Colors. BLACK



2.0
MM

X10D HOOD
Ref. 22201-0908
Sizes. S-M-L-XL
Colors. BLACK



2.0
MM

X10D GLOVES
Ref. 22201-0708
Sizes. S-M-L-XL
Colors. BLACK



3.0
MM

X10D BOOTS . NEW
Ref. 22211-1204
Sizes. [EU] 37-38-39-40-41-42-43-44-45
[US] 5-5.5-6-7-8-9-9.5-10-11
Colors. BLACK

ACCESSORIES



BAMBOO PONCHO
Ref. 22206-0300
Sizes. ONE SIZE
Colors. DARK NAVY /
GRIZZLY



BAMBOO PONCHO . NEW
Ref. 22216-0300
Sizes. ONE SIZE
Colors. STEEL / CASCADE



CAR SEAT COVER
Ref. 22206-0400
Sizes. ONE SIZE
Colors. BLACK



MAGIC WAX
Ref. 22206-0100



STEEL



SLATE



WINE



NAVY



BLACK

CAPS
Ref. 22206-0500
Sizes. ONE SIZE
Colors. STEEL / SLATE / WINE / NAVY / BLACK

NEOPRENE ACCESSORIES

ACCESSORIES

APPAREL

n
e
w



c
o
l
l
e
c
t
i
o
n

20
21



Stay comfy while drinking your post-session beer with friends.



Style & comfort

APPAREL

OVERVIEW



SWEAT HOODIE
Ref. 22207-0200
Colors. GREY / SLATE



MEN T-SHIRT
Ref. 22207-0100
Colors. BRICK / SNOWFLAKES /
APRICOT / SLATE / BLACK



WOMEN T-SHIRT
Ref. 22207-1000
Colors. SNOWFLAKES / BLACK



GRINDAVIK
Ref. 22207-0300
Colors. DARK NAVY BLUE /
GRIZZLY



DAKHLA
Ref. 22207-0500
Colors. HEATHER GREY / GRIZZLY /
BABY BLUE / ANTHRACITE



LE MORNE
Ref. 22207-0700
Colors. WHITE / DARK NAVY
BLUE / ANTHRACITE



LAVANONO
Ref. 22207-0900
Colors. HEATHER GREY / DARK
NAVY BLUE / KHAKI / BABY BLUE /
WHITE / ANTHRACITE

SIZES
MEN S-M-L-XL-XXL
WOMEN XS-S-M-L-XL
COMPOSITION BASIC

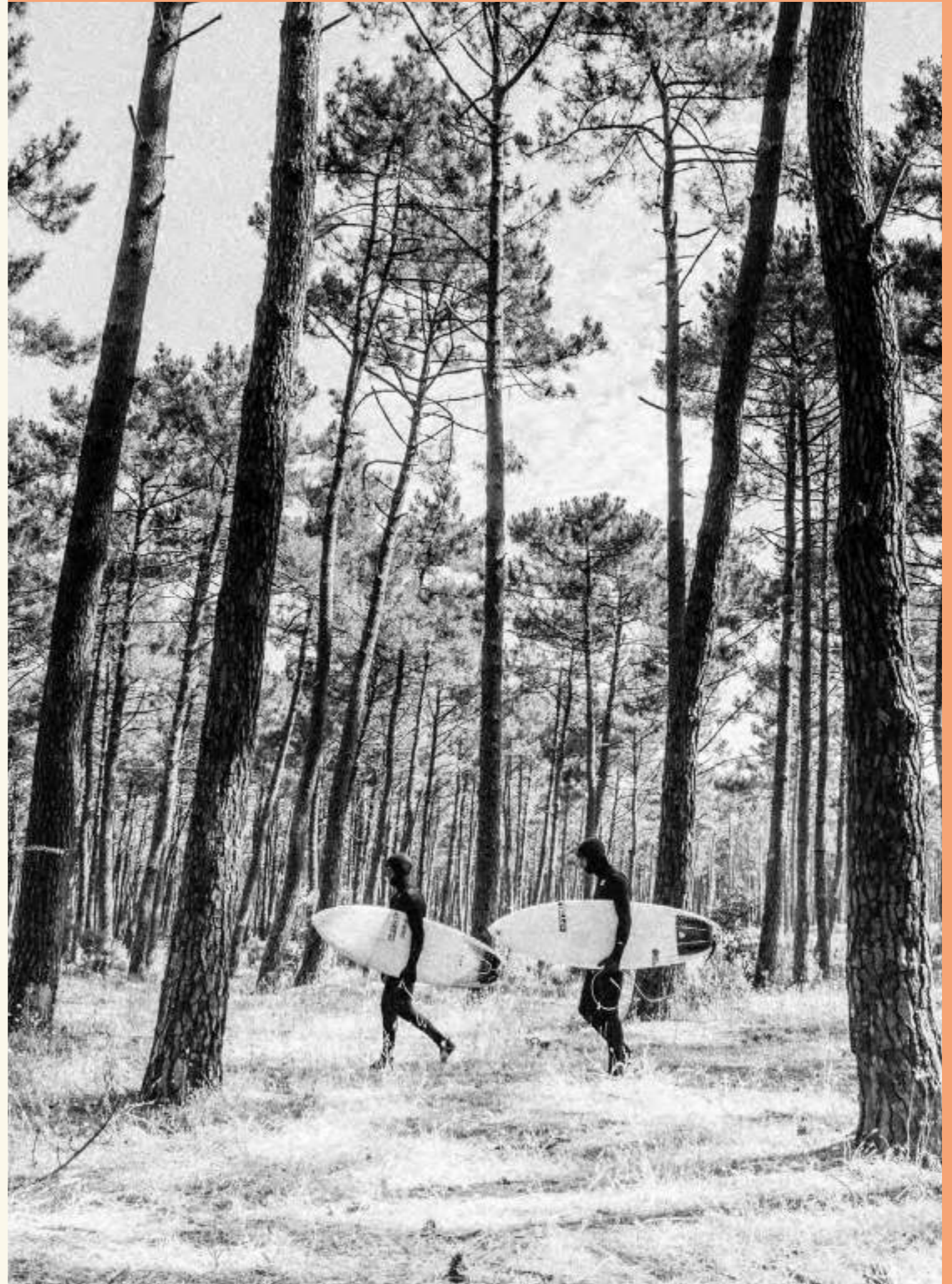
TECHNOLOGIES

n
e
w



c
o
l
l
e
c
t
i
o
n

20
21



20

TECHNOLOGIES

KEY FEATURES

WETSUITS / MATERIALS



MAGMA PLUS

- New generation of thermal materials that insulate & keep you warm
- Best drying time on the market
- Lighter than a classic fleece

Available on MAGMA.



X10D PLUS

- Plush loops work as insulators & heat generators
- Smooth, soft & comfy feeling against the skin
- Dries fast

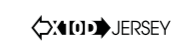
Available on X10D & SEAFARER



X10D JERSEY RECYCLED

- Light & stretch
- Good feeling on the skin

Available on MAGMA



X10D JERSEY

- Light & stretch
- Good feeling on the skin

Available on X10D & SEAFARER



DESIGNED IN 3D

We use computer design to model good-fitted wetsuits in 3D, then we employ an innovative software that converts it into a precise 2D pattern for the factory.

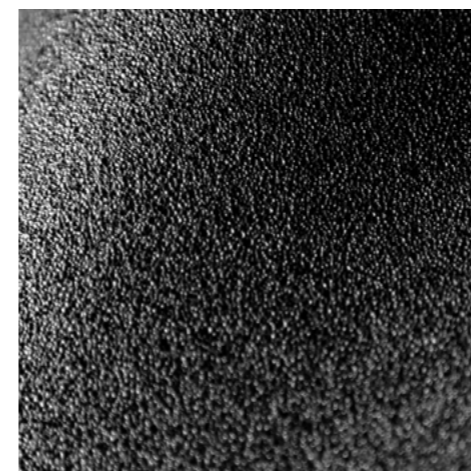
Available on ALL MODEL



REFLEX SKIN

- Best stretch of the market
- Durable: Tear resistant, UV resistant

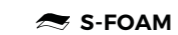
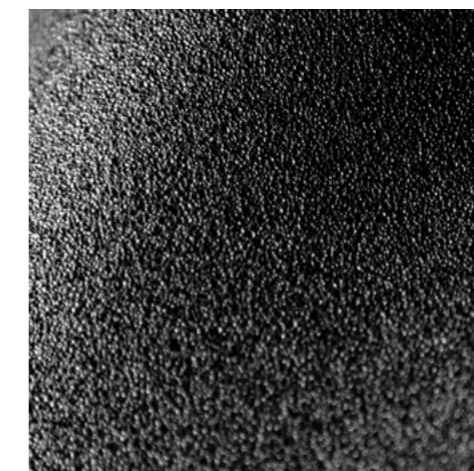
Available on ALL MODEL



AIRFOAM

- Made to be light, improving comfort & endurance
- Best flex & insulation on the market
- Quilted touch

Available on MAGMA & X10D



S-FOAM

- Made from Limestone
- Best flexibility, heat & durability ratio on the market

Available on SEAFARER

KEY FEATURES

WETSUITS



SEALING PRINT

- Keep the water away
- Keep legs & arms panels in place

Available on ALL MODEL,
except on HYBRID & SHORTY



CBS SEAMS

- Neoprene glued together & blind-stitched
- High level of flexibility
- 100% waterproof

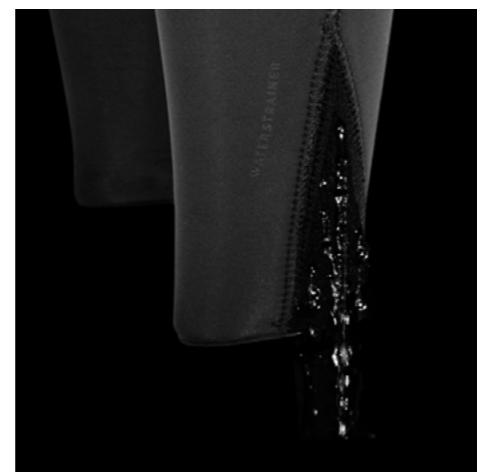
Available on SEAFARER



SD² TAPE

- Triple glued / Blind stitched / Inside tape welded by an air heater machine
- Durable & Flex
- 100% waterproof

Available on MAGMA & X10D



WATER STRAINER

- Drains the water out of the leg
- Continue the session in the best possible conditions

Available on MAGMA & X10D
except on HYBRID & SHORTY



BACK KNEE EMBOSS

- Helps the neoprene to bend more naturally
- Greater comfort during flexion

Available on MAGMA



BACK ZIP

- We use a PK 8mm zip built in high quality nylon, it is a short zip (30cm) in order to maximize the back flexibility.
- An inside flap covers the back and goes around the neck, it protects the back from the outside zipper and allows a perfect waterproofness. It also adds a few millimeters of thickness to an area that is very exposed to wind.

Available on BACKZIP

KEY FEATURES

HARNESSES



DOWN HOLD SYSTEM

- The spreader bar has an asymmetrical attachment that distributes the forces downward
- Secured in its original position, the hook does not ride back up

Available on ALL MODEL



SPREADER BAR

- Length of our bars are well suited so they will pull along both sides of the harness
- Avoids any lateral contraction on the body

Available on ALL MODEL



SINGLE FOAM

- Thermoformed one-piece foam backing
- Much lighter than multiple foam layers used in some harnesses
- More durable as there are less parts to be glued or stitched together

Available on the EXO2



GEL FOAM

- The gel foam disperses pressure evenly & efficiently to provide a "pillow comfort", much appreciated during long sessions
- It creates a different sense of feeling while riding as it moves along with your movements, therefore the contact with the harness is more intuitive & it prevents any rash or rubbing discomfort

Available on the ECLIPSE



TUCK FLAP

- Flaps are inserted into the harness, they are compressed and locked when straps are tightened
- Stiffen the connection between spreader bar & harness & prevent it from riding up

Available on ALL MODEL



ADAPTIVE SHELL

- The Adaptive Shell stiffness shades from hard in the center area to softer on the edges
- The stiff center-belt prevents the harness from folding and compressing your body while preserving a good lumbar support

Available on ALL MODEL



- The softer outline preserves intuitive mobility and adaptability
- It results in a shell that is forgiving where you need flex and stiff where you want support

KEY FEATURES

BOARD BAGS



POLYESTER 600D PREMIUM

- Our bags are built in premium Polyester 600D, this is a choc. tearing, UV and water resistant material.
- It guarantees the best durability to our products.

Available on ALL MODEL



ALUMINIUM BUCKLES

- All the buckles are made in aluminum, to guarantee the best possible durability.

Available on the 747, CHUBBY & BIGGIE



YKK ZIPPERS

- We use heavy-duty 8mm YKK zippers built in a high-quality plastic.
- It avoids any crack, corrosion, and allow a fluid run every time you open/close the bag.

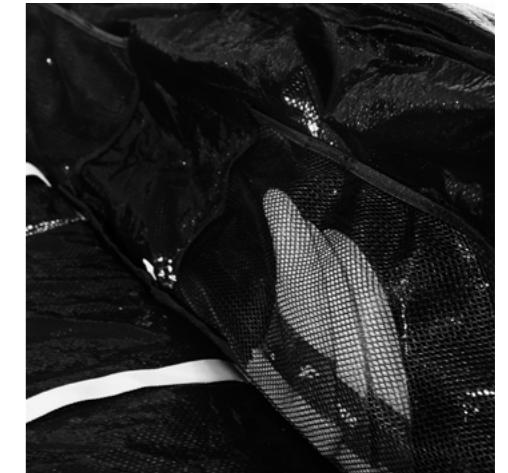
Available on ALL MODEL



« BACKPACK » STRAPS

- For LIGHT versions, the CHUBBY & 747 are easy to carry thanks to their backpack straps.

Available on the 747 LIGHT & CHUBBY LIGHT



INSIDE POCKETS

- The inside of the bag features multiple net pockets, the side pocket can store wax, fins and small accessories...
- While the top pocket can store a lycra, poncho or a small towel to protect the nose of your board.

Available on the 747, CHUBBY & BIGGIE



HIGH DENSITY FOAM

- All foil boardbags are built with a choc resistant high-density foam, which protects the foil effectively.

Available on the FOIL COVERS, MAST COVERS, KITE/SURF FOILBOX



PACK

- Extremely light & easy to pack/fold.

Available on the 747 LIGHT, CHUBBY LIGHT & BIGGIE



WHEELS

- We use high quality wheels that are durable, comfortable & not too noisy.
- WHEELS versions are padded with a thick 8mm foam that guarantees the best protection.

Available on the 747 WHEELS & CHUBBY WHEELS



OUTSIDE POCKET

- All the travel bags feature an easy-to-access outside pocket, it is made in a water-resistant material so it can store wet stuff.

Available on the 747 & CHUBBY



TRANSVERSAL STRAPS

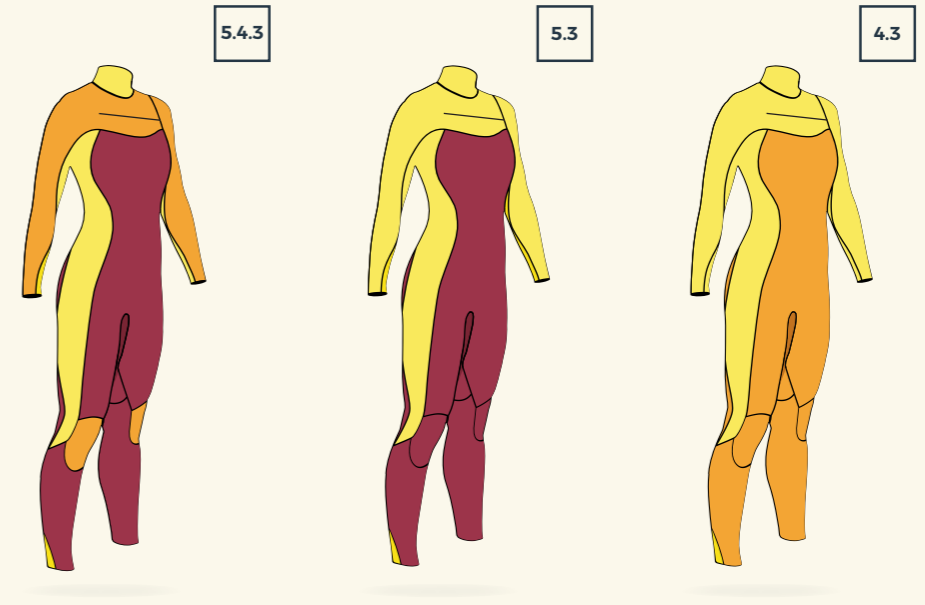
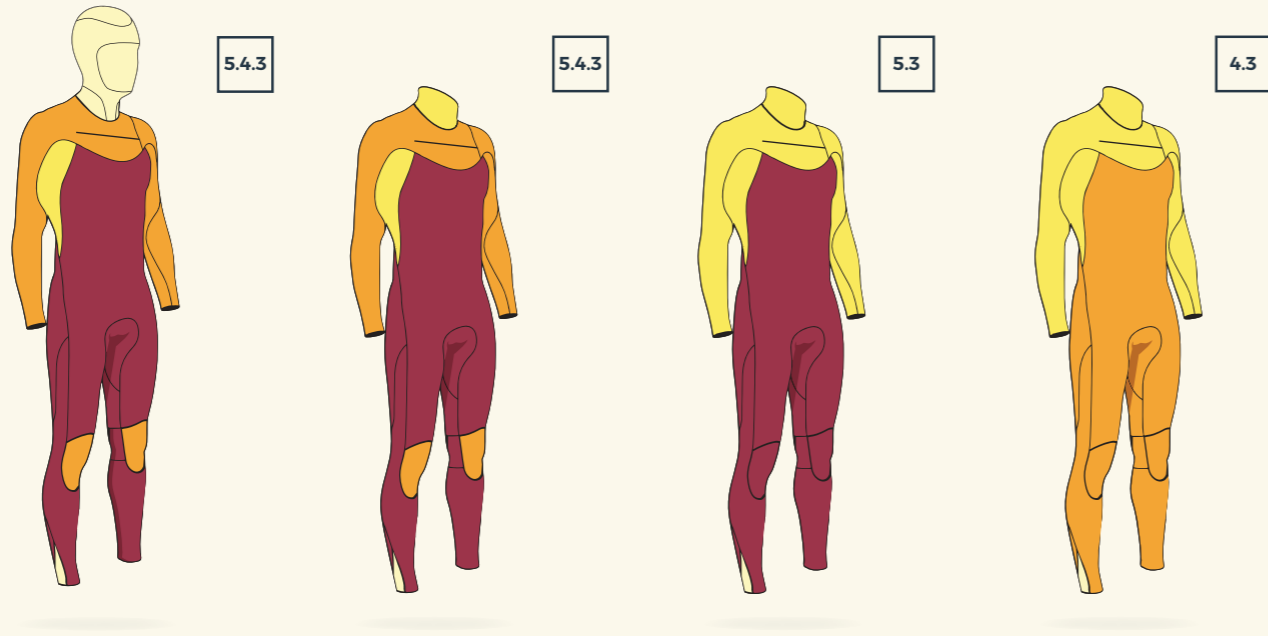
- The transversal reinforcement straps are strategically placed to relieve the zipper and material from too much stress, so the bag can handle heavy loads even when mishandled.

Available on the 747, CHUBBY & BIGGIE

THICKNESS REPARTITION

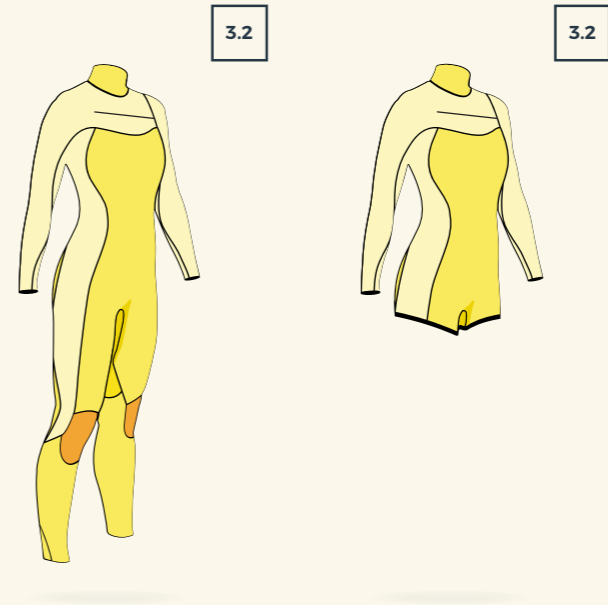
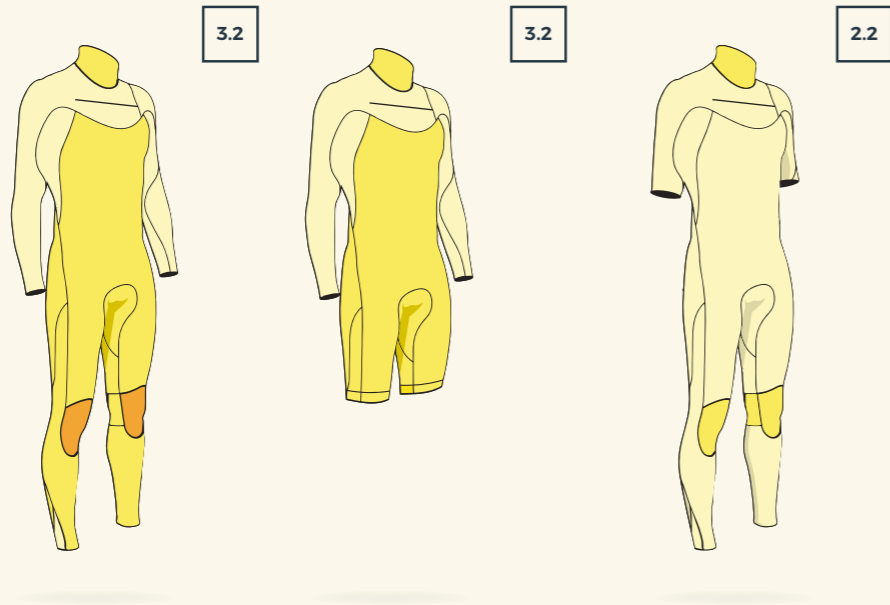
Men

Women



Thickness (mm)	Wetsuit 1	Wetsuit 2	Wetsuit 3	Wetsuit 4
5mm	50.7%	54.8%	57.7%	57.7%
4mm	33.2%	35.9%	42.3%	42.3%
3mm	7.4%	9.3%	42.3%	42.3%
2mm	8.8%			

Thickness (mm)	Wetsuit 1	Wetsuit 2	Wetsuit 3
5mm	50.3%	52.9%	52.9%
4mm	26.5%		47.1%
3mm	23.2%	47.1%	47.1%
2mm			



Thickness (mm)	Wetsuit 1	Wetsuit 2	Wetsuit 3
4mm	2.9%	50.1%	1.7%
3mm	56.1%	49.9%	98.2%
2mm	40.9%		

Thickness (mm)	Wetsuit 1	Wetsuit 2
4mm	2.6%	37.2%
3mm	51.6%	62.8%
2mm	45.7%	

COLORS

2021 SHADES

BLUE	ANTHRACITE	GRAPHITE	SAILOR BLUE	SLATE BLACK	INK BLUE	SLATE	CASCADE	PEWTER	MARINA
BLUE/ GREEN	ORION BLUE	BLUE MIRAGE	STEEL BLUE	GALAXY BLUE					
RED	BORDEAUX	TAWNY PORT	BRICK	CORAIL					
BROWN	APRICOT	SUEDE							
YELLOW	IMPALA	JERRY YELLOW							
OTHER	CREAM		BLACK	SNOWFLAKES	WHITE				

NEW RANGE
NEW COLORS
NEW STYLE

Because we believe every moment out there should be a great one.

MANERA is a French family-business which develops high-quality watersports gear.

Our passion is to put innovation and creation at the service of our pleasure in the ocean.

We drive our business with high requirements and loyalty. Thus, we only offer high-quality products through a network of trusted, specialized shops.

MANERA was founded so that we could make the most of the time we spend on the water, without getting cold or feeling uncomfortable. We've got your back in the storm and we make sure you can remain there until you've had enough fun.

Julien Salles

F-ONE SAS

ZAC de la Méditerranée
175, Route de la Foire
34470 PÉROLS - FRANCE

Tél. +33 (0) 4 67 99 51 16
Fax. +33 (0) 4 67 99 61 93

WWW.MANERA.COM

