



EasyFit™ Benchtops

with 3mm radius post-formed edge

Made in Australia



Introducing Formica EasyFit™ Benchtops, featuring a stylish 3mm radius edge detail. Boasting the quality of laminate you expect from Formica, these benchtops are perfect for any kitchen, butler's pantry, laundry or study nook. Offered in essential sizes, and available to order online, you could buy today and be ready to install tomorrow^.

Backed by a 7 year limited warranty, Formica EasyFit Benchtops are your smart interior solutions.



Limited waste, saves time and money

Order online! No more extended turnaround times or dealing with multiple suppliers, as required for custom benchtops. And because they come prefinished to standard sizes, cabinetmakers only pay for what they need, with minimal waste to be managed on site.

Locally stocked and readily available^

Manufactured in Australia from Australian made laminate and substrate, the entire range is held in stock in every one of our distribution centres. So no matter where a project is located, or what combination of size and colour is required, we can process orders and dispatch the very next business day.

Ready to install

Delivered prefinished and ready to install with a standard depth of 610mm to ensure a 20mm overhang can be achieved above appliances, with minimal adjustments only as required on site. The range also includes a large-format panel in a 900mm depth with two post-formed edges, ideal for breakfast bars or island benches.

More than just kitchens

EasyFit benchtops bring contemporary style and hardwearing performance to any space where a laminate bench surface is required. They're perfect for kitchens, of course, but also secondary applications like bathroom vanities, laundry benches, butler's pantries and even study nooks.

Distributed by:

Trademaster
46-52 Ferndell Street,
South Granville NSW

1300 664 584
sales@trademaster.com.au
www.trademaster.com.au

The sample swatches depicted on this brochure are indicative only and as close as printing limitations allow. We highly recommend viewing an actual sample before purchasing. Specifications are subject to change without notice. Errors and omissions are expected.



EasyFit™ Benchtops

with 3mm radius post-formed edge

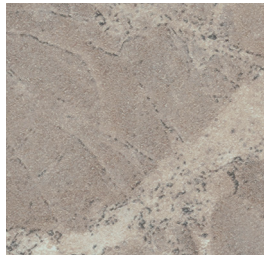
Made in Australia



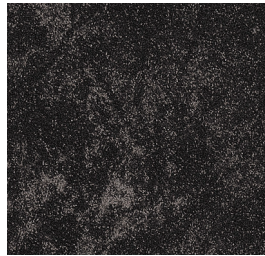
COLOURS



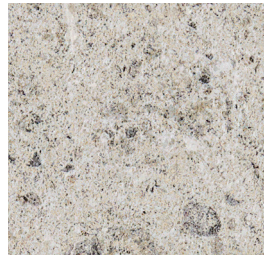
CALACATTA GOLD



CASTILLE GOLD



DARKSIDE MARBLE



TERRACE PEARL



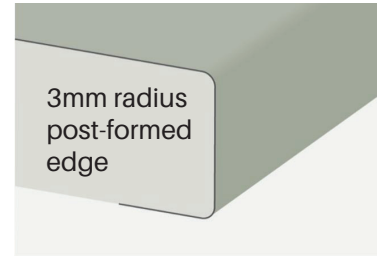
GREY CEMENT



AUTUMN OAK



NATALE WALNUT



AVAILABILITY CHART

COLOUR NAME	COLOUR NO.	SUBSTRATE	LAMINATE FINISH	FINISHED SIZE	AVAILABLE SIZES	POST-FORMED EDGES	PRODUCT CODE
CALACATTA GOLD	1016	Aquaban 33mm MR Particleboard	Velour	34mm	1800mm x 610mm	One	994207
					3600mm x 610mm	One	994214
					3600mm x 900mm	Two	994303
CASTILLE GOLD	1013	Aquaban 33mm MR Particleboard	Velour	34mm	1800mm x 610mm	One	994208
					3600mm x 610mm	One	994215
					3600mm x 900mm	Two	994304
DARKSIDE MARBLE	1017	Aquaban 33mm MR Particleboard	Velour	34mm	1800mm x 610mm	One	994209
					3600mm x 610mm	One	994216
					3600mm x 900mm	Two	994305
TERRACE PEARL	1011	Aquaban 33mm MR Particleboard	Velour	34mm	1800mm x 610mm	One	994210
					3600mm x 610mm	One	994217
					3600mm x 900mm	Two	994306
GREY CEMENT	1018	Aquaban 33mm MR Particleboard	Velour	34mm	1800mm x 610mm	One	994211
					3600mm x 610mm	One	994218
					3600mm x 900mm	Two	994307
AUTUMN OAK	1028	Aquaban 33mm MR Particleboard	Velour	34mm	1800mm x 610mm	One	994212
					3600mm x 610mm	One	994219
					3600mm x 900mm	Two	994308
NATALE WALNUT	1019	Aquaban 33mm MR Particleboard	Velour	34mm	1800mm x 610mm	One	994213
					3600mm x 610mm	One	994220
					3600mm x 900mm	Two	994309

Each EasyFit benchtop comes with two additional laminate edging strips supplied, which makes light work of fabrication and installation.

Distributed by:

Trademaster
46-52 Ferndell Street,
South Granville NSW

1300 664 584
sales@trademaster.com.au
www.trademaster.com.au

The sample swatches depicted on this brochure are indicative only and as close as printing limitations allow. We highly recommend viewing an actual sample before purchasing. Specifications are subject to change without notice. Errors and omissions are expected.