



Strip Hearts Quilt

48" x 57"

Fabric & Cutting Instructions

Fabric 1: 1/2 yard

Cut (20) 2 1/2" x 11 1/2" strips

Fabric 2: 1/2 yard

Cut (20) 2 1/2" x 11 1/2" strips

Fabric 3: 1/2 yard

Cut (20) 2 1/2" x 11 1/2" strips

Fabric 4: 1/2 yard

Cut (20) 2 1/2" x 11 1/2" strips

Fabric 5: 1/2 yard

Cut (20) 2 1/2" x 11 1/2" strips

Fabric 6: 1/2 yard

Cut (20) 2 1/2" x 11 1/2" strips

Fabric 7: 2 yards of background fabric

Cut the following pieces:

(40) 7 1/2" squares

(80) 2 1/2" squares

Binding: 1/2 yard

Backing: 3 1/8 yards

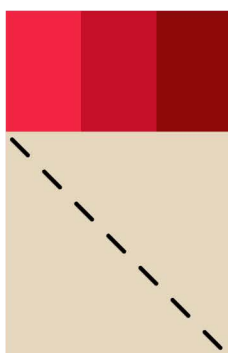
All seams are sewn with a 1/4" seam allowance. RST: right sides together

Sewing Instructions

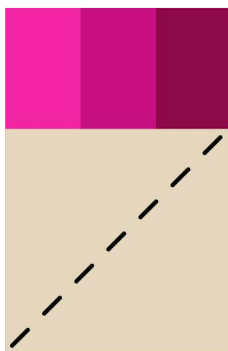
Gather (1) of each strip from Fabrics 1-6. Arrange the colors how you'd like, then sew three strips together. This makes one half of the heart, repeat this step with the remaining three. You will have 2 sets of strips sewn:



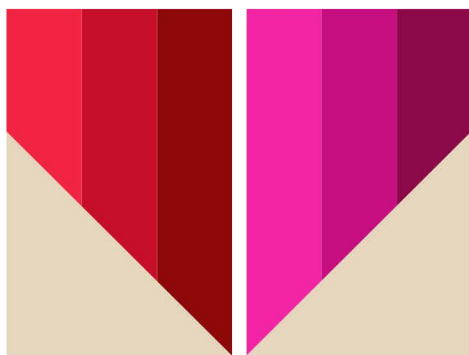
Gather (2) of your 7 ½" squares of background fabric. Starting with the left side of the heart, place your square RST on the bottom side of your strip set. Pin for stability, and sew corner-to-corner from the top LEFT to the bottom RIGHT like so:



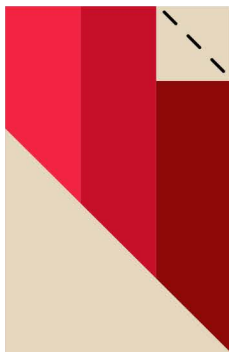
Repeat this for the right side of the heart, making sure you sew corner-to-corner the opposite direction, from the top RIGHT to the bottom LEFT like so:



Measure $\frac{1}{4}$ " from these seems towards the bottom. Cut your excess fabric, unfold then press:



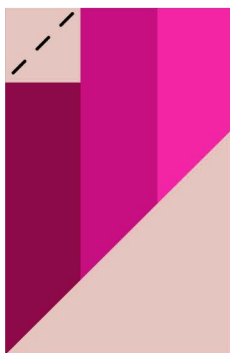
Gather (4) of your $2\frac{1}{2}$ " squares of background fabric. Starting with the left side of the heart, place your square RST on the top right corner. Pin for stability, and sew corner-to-corner from the top LEFT to the bottom RIGHT like so:



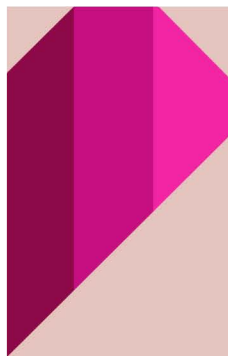
Now, do this for the top left corner as well, sewing corner-to-corner from the opposite direction this time. Measure $\frac{1}{4}$ " from these seams towards the top. Cut your excess fabric, unfold then press:



With the other 2 squares, repeat those steps for the right side of the heart, making sure you sew corner-to-corner the opposite direction, from the top RIGHT to the bottom LEFT like so:

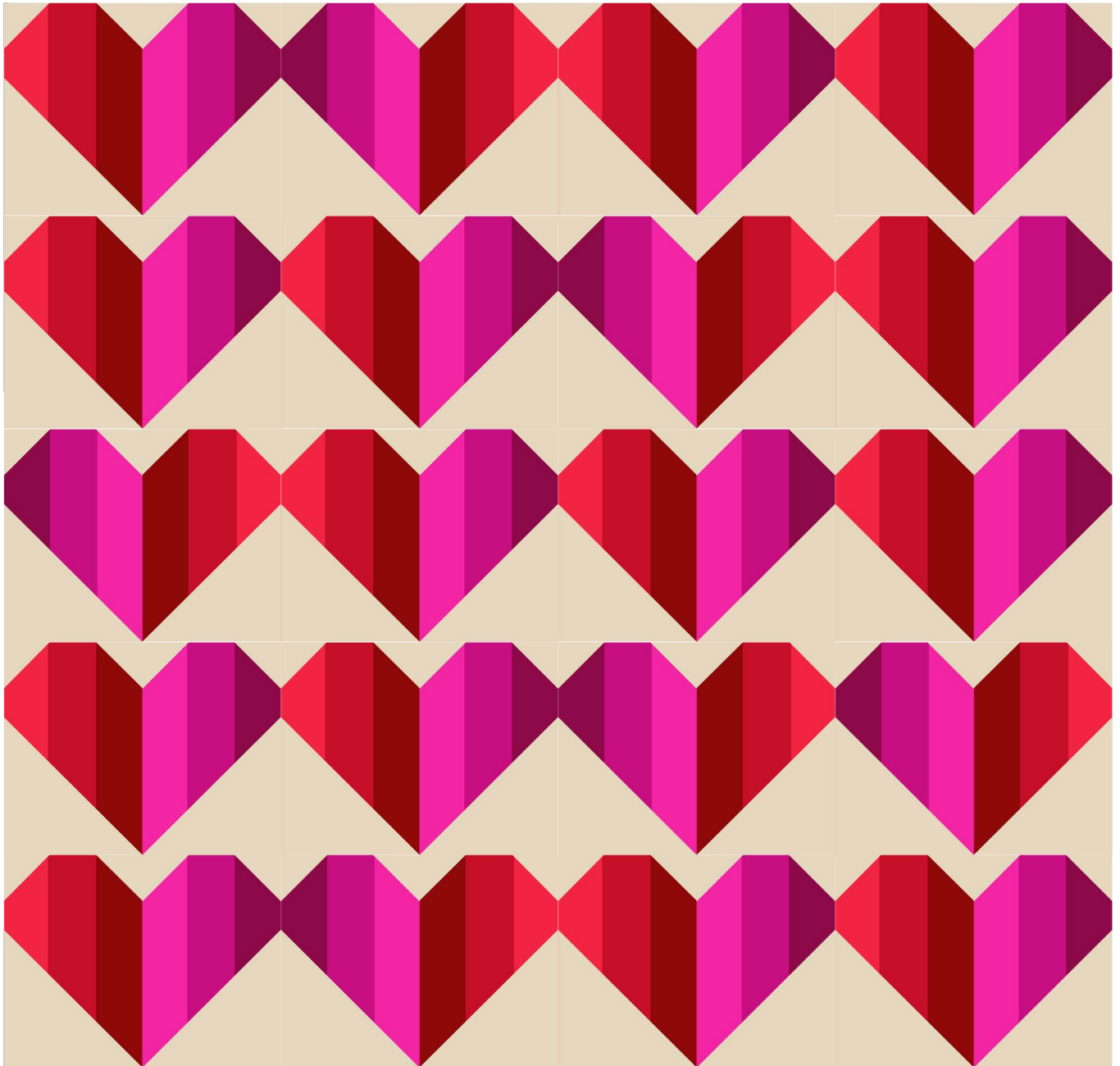


Now, do this for the top right corner as well, sewing corner-to-corner from the opposite direction. Measure $\frac{1}{4}$ " from these seams towards the top. Cut your excess fabric, unfold then press:



Sew your two heart halves together. Repeat these steps to construct all 20 of your blocks.





Quilt, Bind and Enjoy!