



HOW TO INSTALL PANELS

STEP 1

Gather your tools, including a level, glue, measuring tape, pencil, scissors, and painter's tape. Clean the wall and remove any outlet covers or wall plates.



STEP 2

Determine the positioning of the first panel and cut it to size. If the panels have an interlocking pattern, use scissors to cut the starting panel straight. Use a level and pencil to mark a horizontal line if needed.



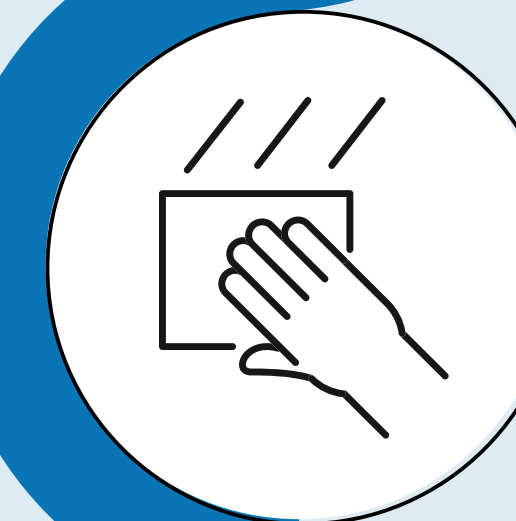
STEP 3

Apply glue to the inner side of the panel, covering the raised edges that will contact the wall. No need to fill cavities.



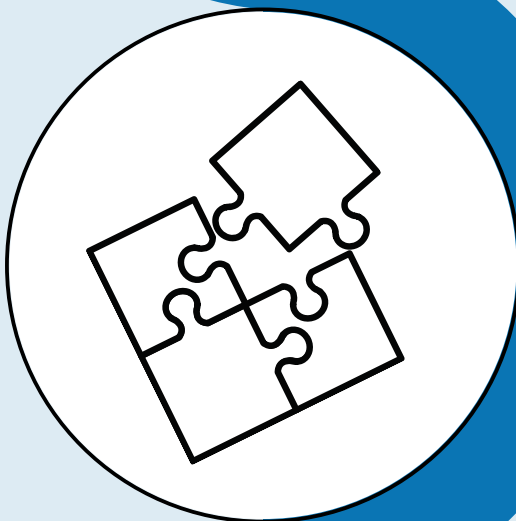
STEP 4

Align the first panel in place, starting from the bottom or top corner of the wall. Hold it for a few seconds to ensure it sticks to the wall.



STEP 5

Apply glue to the back of subsequent panels and interlock them with the previous panel. Make sure the panel is level and adjust if necessary.

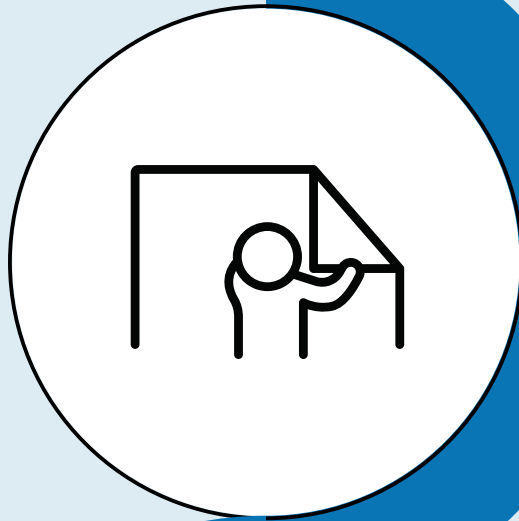




HOW TO INSTALL PANELS

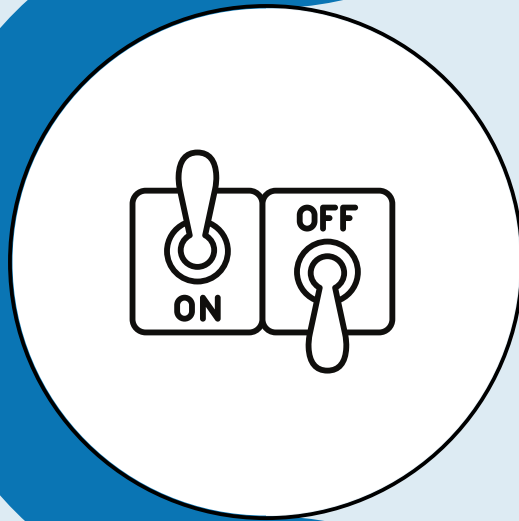
STEP 6

For edges and corners, measure the required panel size and cut it to fit using scissors. Apply glue to the back of the panel and interlock it with the previous panel. Hold it for a few seconds to ensure it sticks to the wall.



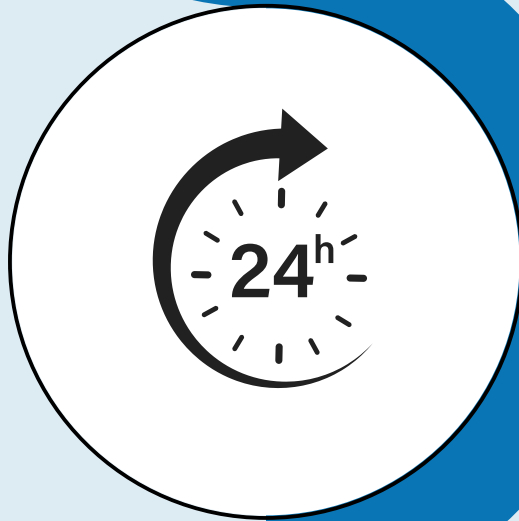
STEP 7

For outlets or switches, measure the size of the outlet and mark it on the panel. Cut out the marked area using scissors and apply glue to the back of the panel. Align the panel with the outlet and press it firmly to ensure it sticks to the wall.



STEP 8

Once all panels are attached, let the glue dry for 24 hours before removing the painter's tape and reinstalling wall plates and outlet covers.



By following these steps, you can easily install our 3D vinyl panels on any flat or slightly uneven wall, creating a unique and modern space. If you have any questions or concerns during the process, please contact our customer support team for assistance or check out our YouTube tutorial.

Note that the glue you need to use must work well with PVC products!

We recommend you the adhesive brand:

"Gorilla" Heavy Duty Construction Adhesive
"LoctitePL" Premium MAX Construction Adhesive (note:
very strong adhesion)

But of course, you can use any glue that works for you!