

# 2015 Volvo Tractor 3-Wire GPS Install

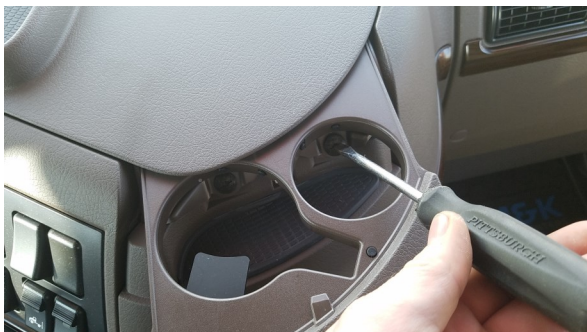


**1.**



Remove plastic panels on vehicle dash using nylon pry bar. There will be 2 in total.

**2.**



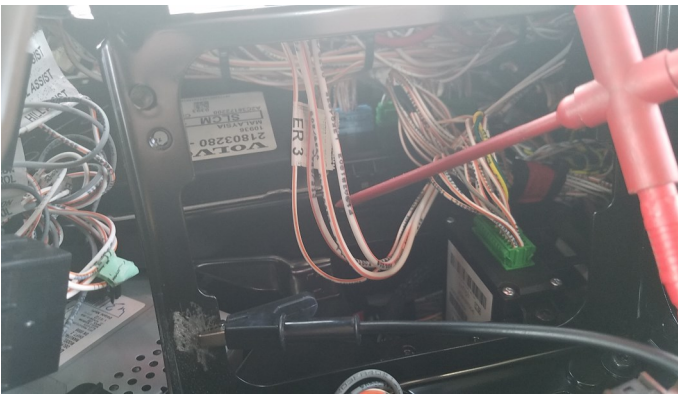
Pull out cup holder and remove the 2 screws holding it in place.

3.



Remove cup holder assembly and set aside.

4.



Locate wires underneath the fuse box. You will be looking for a 12 volt constant source and a true ignition.

5.

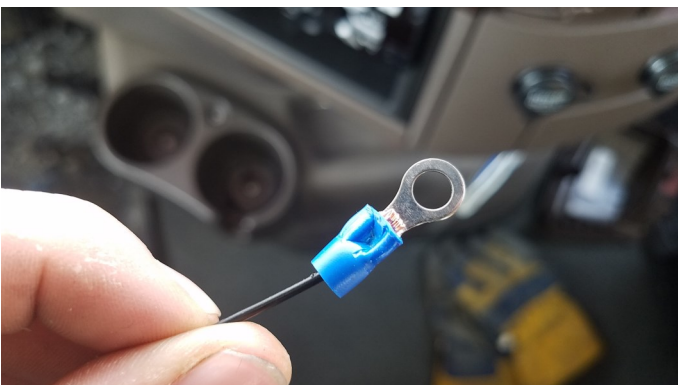


Wires will test for 12+ volts in the following key positions:

12V Constant: All key positions and with key out.

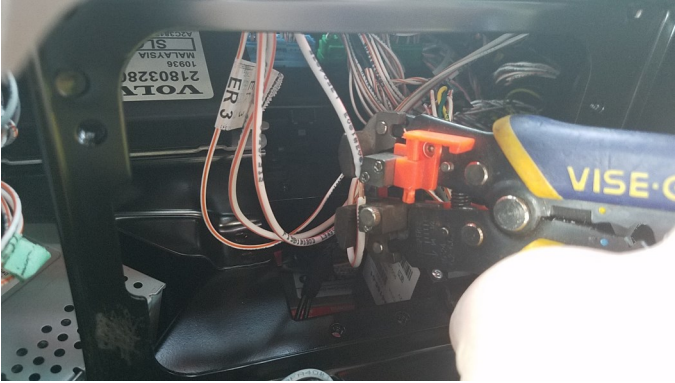
Ignition: ON, Crank, Run.

6.



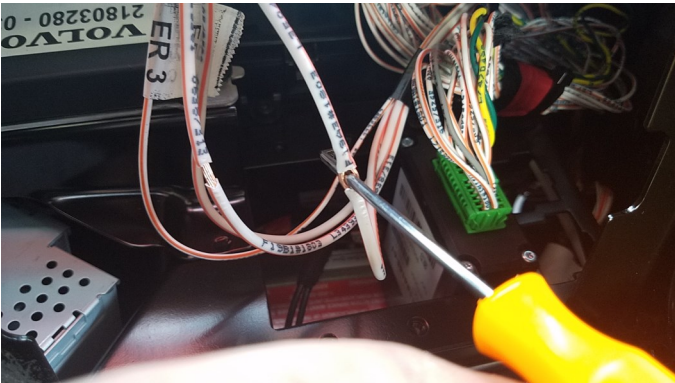
Crimp a ring terminal to the black/ground wire on the GPS unit harness

7.



Using an automatic wire stripping tool, take back the insulation on the wires you will be connecting to. Take care not to short-out any of the exposed wire to a metal surface.

8.



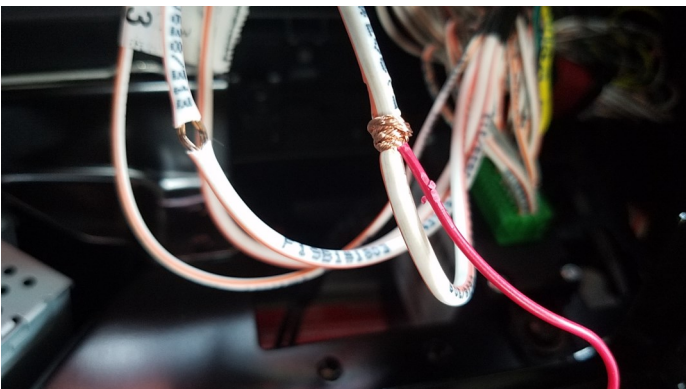
Use a pick tool to poke a hole through the wires.

9.



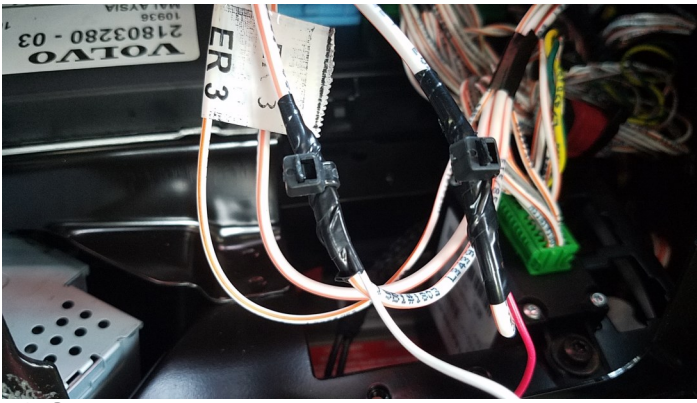
Prepare the wires on the GPS harness for connection by stripping back the insulation 2-3 inches and twisting tightly.

10.



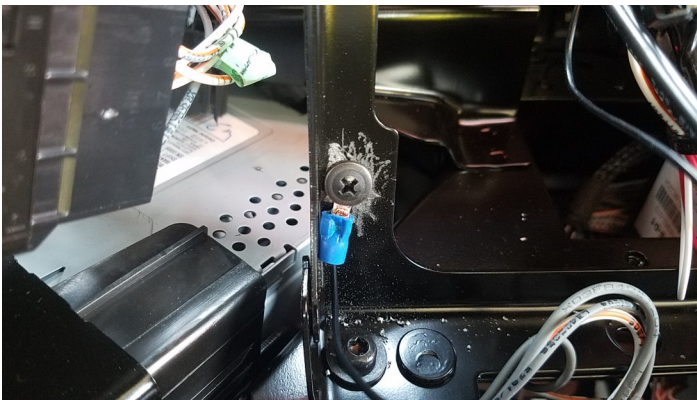
Insert the wires through the holes you poked in them and wrap around tightly. Pinch the connection tight with your fingers when finished

11.



Tape connections with electrical tape. Then secure the connection with a zip-tie directly over where you spliced into the wires.

12.



Find a good chassis ground (Metal connected to the vehicle body/frame) and sand down the area if any paint is present. Use a self-tapping screw to make the connection/ Alternatively, you may use an existing bolt or ground wire.

13.



Put a zip-tie over any fuse holders (if applicable) to prevent tampering and to clean up harness. Bundle up wiring harness and secure it. Make sure there is no stress on your wiring connections!

14.



Mount the GPS device high up in the dash, and ensure it is free of any metal obstructions (this can interfere with the GPS/cellular signals) Use zip-ties or similar method to secure the device. Now all that's left to do is test your device and re-assemble the vehicle dash!