

SybronEndo

REALSEAL

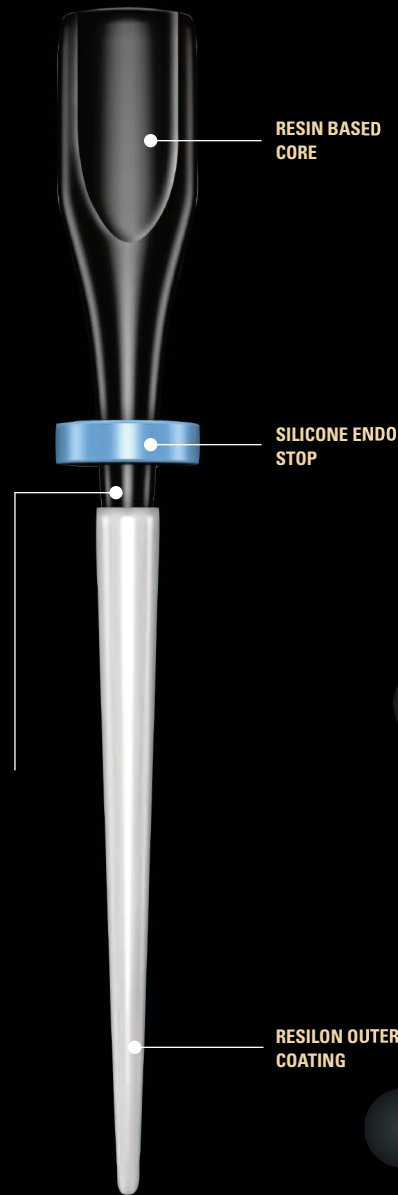
BONDED OBTURATOR

1™

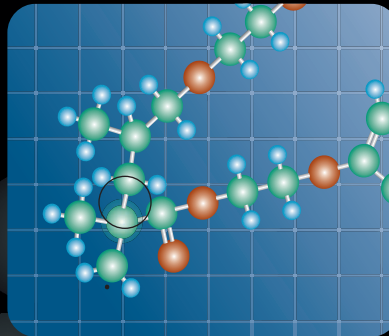


REALSEAL 1

THE PREMIERE WARM-BONDED OBTURATOR

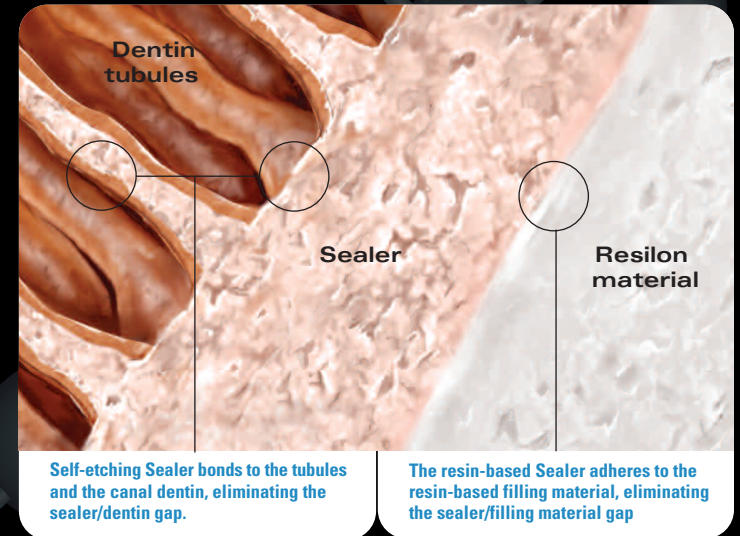


RealSeal 1 Bonded Obturator™ is the next generation in carrier-based delivery systems. All the components of RealSeal 1 – sealer, filler and core – are resin-based materials and bond with each other to form a superior seal. Creating a true chemical bond when materials contact, this proven technology provides superior leakage prevention.¹ As an added benefit, this system's core is engineered to be easily discernable on a radiograph from the Resilon filling material that coats it.

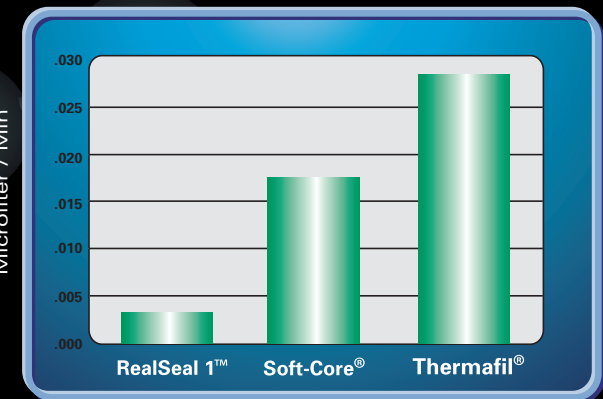


Methacrylate monomers in the Sealer and the Resilon material of the Obturator bond chemically with each other.

When the Obturator is placed into the canal with the heated Resilon on its surface, the resin monomer molecules in the unset Sealer diffuse into the Resilon material. They cross-link with the molecular components of the Resilon formula and co-polymerize with them to form a homogeneous resin matrix.² A seamless interface forms along the length of the Obturator, eliminating gaps and potential pathways for leakage and reinfection.



An obturation system has one primary function – sealing the root canal. RealSeal 1 creates a superior seal, preventing leakage and reinfection. In an independent blind study conducted at the University of Rome, the RealSeal 1 Obturation system resisted leakage 6 times better than the Soft-Core® System and nearly 10 times better than the Thermafil® System.

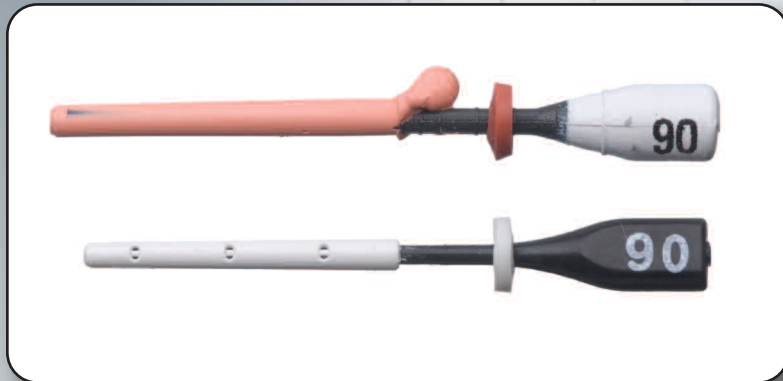


Fluid filtration leakage study: Leakage resistance

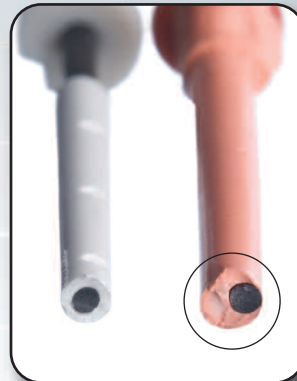
1. "A Fluid Filtration Comparison of Gutta-Percha Versus Resilon: A New Soft Resin Obturation System." Stratton et al., U.S. Army Dental Activity, Fort Bragg, NC. Abstract: #OR20, JOE, Vol. 31(3), March 2005.
 2. Reference www.resilonresearch.com.

Quality that's apparent

The RealSeal 1 Obturators and Verifiers are injection molded for extreme accuracy and precision. Each RealSeal 1 Obturator is centered inside the Resilon filling material, ensuring that all of the canal walls are coated as evenly as possible. Compare this to the inconsistent coverage of hand dipped-obturators from the current market leader in carrier-based systems.



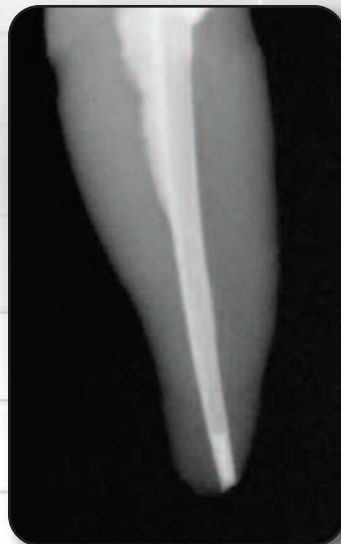
Injection molding ensures a consistent amount of Resilon as the RealSeal 1 core (bottom) is centered in the middle of the filling material.



A hand-dipped obturator (right) often results in uneven distribution of the filling material.

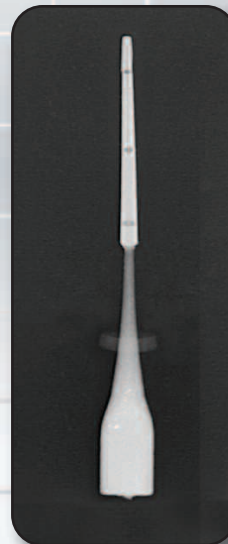
Superior radiopacity

The RealSeal 1 filling material has a higher radiopacity than gutta-percha. RealSeal 1 also offers dual radiopacity — the core and filling material have different levels of radiopacity. As a result of this “dual” radiopacity, you are able to see the core's location relative to the filling material inside the root canal. The dual radiopacity makes it easy to see when the core is placed too long or too short within the canal. The competitive carrier-based systems with monochromatic radiopacity do not have this feature.



Radiograph showing positioning of RealSeal 1's core material.

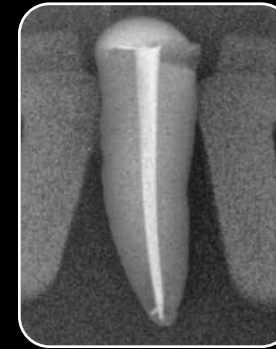
Radiograph courtesy of Marvin W. Berlin, DDS. mckinneydentist.com



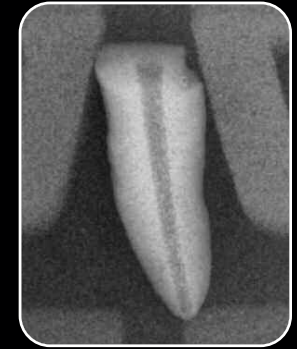
Radiograph of RealSeal 1 Obturator.

Easily retrieved

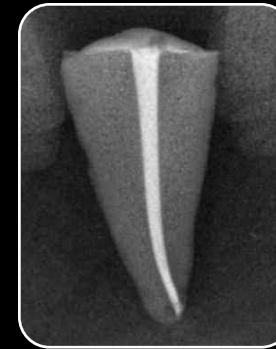
RealSeal 1 Obturators are easily retrieved via mechanical means or chloroform can be used to dissolve the entire obturator. In Case A below, the obturator was removed using a small amount of chloroform and hand files and the canal re-instrumented in a little over 3 minutes. In Case B below, the obturator was removed with chloroform only and re-instrumented in slightly more than 7 minutes.



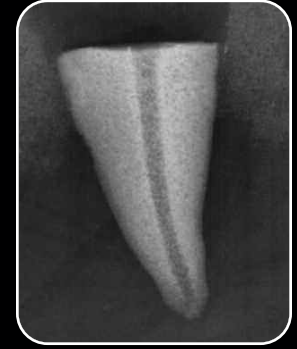
Case A - Filled



Retrieved



Case B - Filled



Retrieved

Latex free

The filling material used with RealSeal 1 is made from polymers of polyester and not gutta percha. This resin-based material (Resilon) does not contain rubber or rubber-based materials. Consequently, RealSeal 1 is ideal to use with patients who have latex allergies.



Ordering information



RealSeal 1 key components

RealSeal 1 — Oven

972-2019

1 – Oven, Instructions



Oven

RealSeal 1 — .04 Taper Intro Kit

972-2000

1 – 4 ml syringe of RealSeal SE Self-Etch Sealer
 1 – Small Plastic Practice Block
 1 – Large Plastic Practice Block

1 – pack each of #25, #30, #35 Verifiers
 1 – pack each of #25, #30, #35 Obturators
 Instructions, DVD, Technique Guide



Self-Etch Sealer

RealSeal 1 — .04 / 21mm Obturator (6 Pack)

#20	972-2020	#40	972-2040	#60	972-2060
#25	972-2025	#45	972-2045	#70	972-2070
#30	972-2030	#50	972-2050	#80	972-2080
#35	972-2035	#55	972-2055	#90	972-2090



Obturator

RealSeal 1 — .04 / 21mm Verifiers (6 Pack)

#20	972-2120	#40	972-2140	#60	972-2160
#25	972-2125	#45	972-2145	#70	972-2170
#30	972-2130	#50	972-2150	#80	972-2180
#35	972-2135	#55	972-2155	#90	972-2190



Verifier

RealSeal SE Self-Etch Sealers

1 – RealSeal SE Self-Etch Sealer 972-2012
 12 – Mixing Tip Refills 972-2011



Obturator & Verifier packs

SybronEndo eStore You can now shop online at store.sybronendo.com.

MANUFACTURED FOR
SybronEndo | *Safe files, superior fills.*
A DIVISION OF SYBRON DENTAL SPECIALTIES

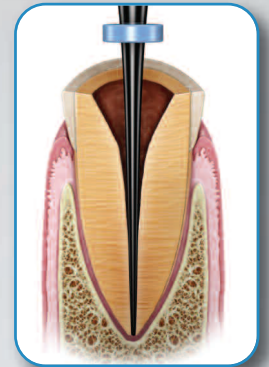
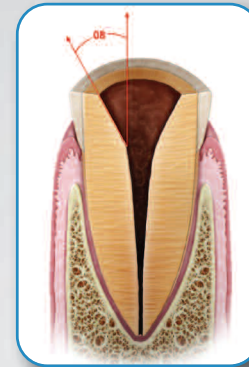
1717 West Collins Avenue, Orange, CA 92867
 Tel 800.346.ENDO Tel 714.516.7979 Fax 714.516.7936
 Visit us online at SybronEndo.com.

SybronEndo Europe, Basicweg 20, 3821 BR Amersfoort, The Netherlands
 Tel +31 33 453 61 59 Fax +31 33 453 61 53

REALSEAL 1



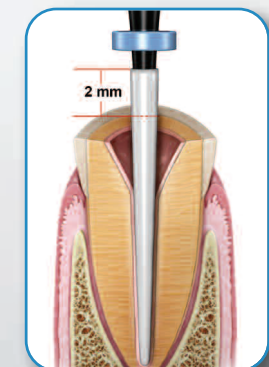
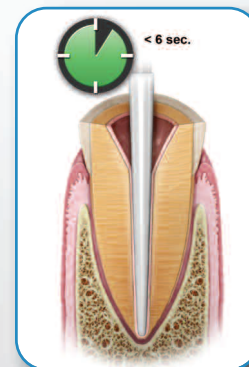
Ease of application



Prepare the canal with a .08 coronal flare and select the appropriate size obturator via size verifiers.



Heat Obturator in the RealSeal 1 Oven and coat the canal walls with self-etch sealer.



Seat RealSeal 1 Obturator in the canal within 6 seconds. For short canals, you can also trim off 2mm of the Resilon material.