

Instructions for use



proxeo

Prophy Handpieces

Contents

A-dec W&H symbols.....	4 – 5
1. Introduction	6 – 8
2. Safety notes	9 – 10
3. Product description	11
4. Operation	12 – 14
Assembly/removal, To change dental bur, Test	
5. Cleaning and maintenance.....	23 – 31
General, Pre-cleaning, Manual cleaning, Manual disinfection, Automated cleaning and disinfection, Lubrication, Sterilization and storage	
6. A-dec W&H accessories and spare parts	32
7. Technical data.....	33 – 34
8. Recycling and disposal.....	35
Warranty	36
A-dec W&H contacts	37

A-dec | W&H symbols instructions for use



CAUTION!
(to prevent
damage occurring)



WARNING!
(risk of injury)



General explanations,
without risk to persons
or objects



**Do not dispose of
with domestic waste**

A-dec | W&H symbols handpiece / packaging



CE 0297
from the manufacturer



Disposable article



Date of manufacture



Thermal washer disinfectable

REF Catalog number



UL Component Recognition
Mark indicates compliance
with Canadian and
U.S. requirements



Sterilizable up to the
stated temperature

SN Serial number

1. Introduction

Creating customer success is a key foundation to the A-dec|W&H quality policy. In support of that effort, this A-dec|W&H product has been developed, manufactured, and subjected to final inspection according to legal regulations, quality norms, and industry standards.

For your safety and the safety of your patients

Prior to initial use please read the instructions for use completely; they explain how to use your A-dec|W&H product and ensure proper, efficient and safe operation.

Intended use

The Proxeo handpiece is intended for cleaning and polishing the tooth surface and fillings.



Always follow the manufacturer's recommendations for the handpiece.

Misuse may damage the handpiece, create risks, and pose hazards for patients, users, and others.

Qualifications of the user

We have based our development and design of the dental handpiece on the dentists, dental hygienists, dental employees (prophylaxis), and dental assistants target group.



Production according to EU Directive

The handpiece is a medical product according to the EU Directive 93/42/EEC.



Device labeling statement

U.S. Federal law restricts this device to sale by or on the order of a dentist, physician, or any other practitioner licensed by the law of the state in which he or she practices to use or order the use of this device.



Responsibility of the manufacturer

The manufacturer can only accept responsibility for the safety, reliability and performance of the handpiece when it is used in compliance with the following directions:

- > The handpiece must be used in accordance with these instructions for use.
- > The handpiece has no components that can be repaired by the user. Assembly, modifications or repairs must only be undertaken by authorized A-dec|W&H repair locations.

Skilled application

The handpiece is intended for use only by trained dental or medical practitioners for the purposes listed under the Indications for Use, in accordance with this document, the applicable health and safety regulations, and the valid accident prevention regulations.

The handpiece should be prepared for use and maintained by staff who are trained in procedures for infection control, personal safety, and patient safety.

Improper use, (e.g., through poor hygiene and maintenance), non-compliance with our instructions, or the use of accessories and spare parts that are not approved by A-dec|W&H invalidates all claims under warranty and any other claims.

Service

In case of service or repair, contact your local retail A-dec dealer or A-dec customer service.

Service and maintenance work must only be carried out by authorized A-dec|W&H repair locations.

2. Safety notes



- > The operation of the handpiece with light is permitted only on dental units that correspond to the standards IEC 60601-1 (EN 60601-1) and IEC 60601-1-2 (EN 60601-1-2).
- > Use only non-contaminated, filtered, oil-free, and dry compressed air to operate the handpiece.
- > Always ensure the correct operating conditions.
- > Check the handpiece for damage and loose parts each time before using.
- > Do not operate the handpiece if it is damaged.
- > Insert the handpiece only when the motor is stationary.
- > Perform a test run each time before using.

Cleaning and maintenance prior to initial use

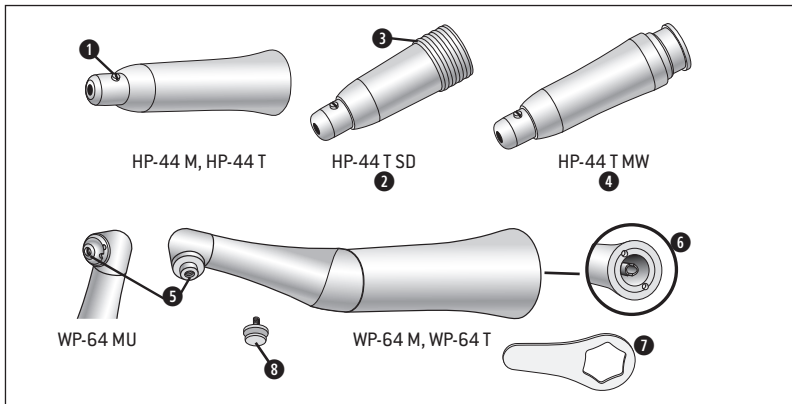


Ensure that the handpiece is in clean condition and sealed in polyethylene (PE) film when the product is first delivered.

- > Lubricate the handpiece prior to initial use.
- > Sterilize the handpiece prior to initial use.

- > See lubrication instructions on page 28
- > See sterilization instructions on page 30

3. Product description



Young system:

(HP-44 M, HP-44 T,
HP-44 T MW, HP-44 T SD /
WP-64 M, WP-64 T)

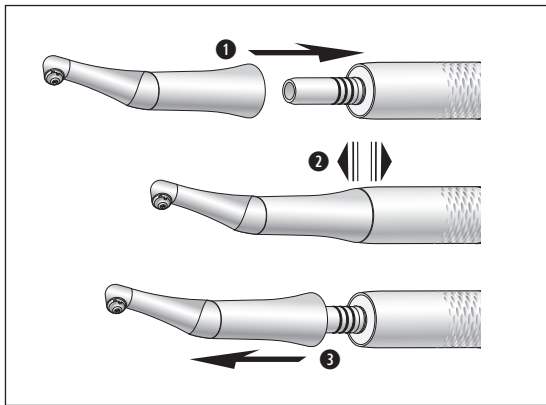
- ① Nose
- ② StarDental® connection
- ③ Retention sleeve
- ④ Midwest® connection

Universal system:

(WP-64 MU)

- ⑤ Thread
- ⑥ Driver
- ⑦ Key
- ⑧ Snap-on Adapter

4. Operation – assembly/removal

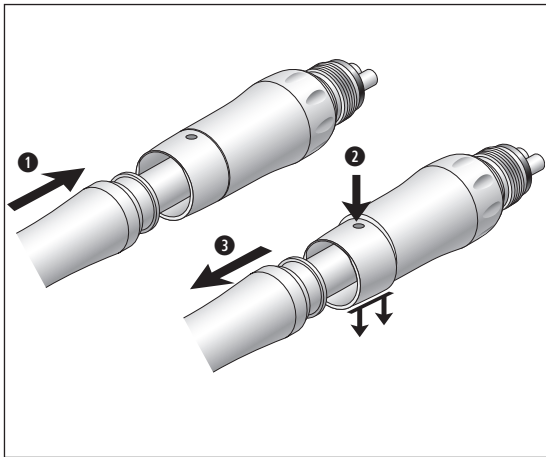


A-dec|W&H connection



Do not install or remove the handpiece while the motor is running!

- 1** Push the handpiece onto the motor until it snaps into place.
- 2** Check the connection to the motor. Verify that the connection is secure.
- 3** Pull the handpiece to remove it from the motor.

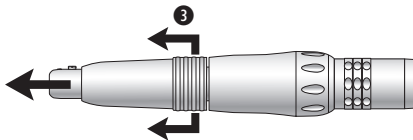
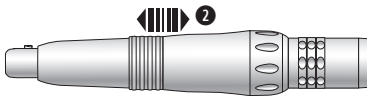
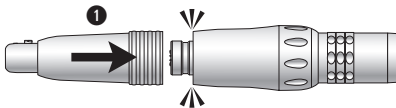


Midwest® connection



Do not install or remove the handpiece while the motor is running!

- ➊ Push the handpiece onto the motor.
- ➋ Press the locking sheath.
- ➌ Remove the handpiece from the motor.



StarDental® connection



Do not install or remove the handpiece while the motor is running.

- ➊ Push the handpiece onto the motor.
- ➋ Check the connection to the motor. Verify that the connection is secure.
- ➌ Pull the retention sleeve of the handpiece to remove it from the motor.



Dental burs:

- > Prophylaxis disposable heads
- > Prophylaxis cups or brushes
- > Snap-on adapter for Prophylaxis cups/brushes



- > Disposable burs must be replaced after each treatment.



- > Use only dental burs in good condition and observe the manufacturer's information.
- > Insert the dental bur only when the handpiece is stationary.
- > Never touch the dental bur when it is in motion.




- > Use the handpiece in clockwise direction only. In a counter clockwise direction the cups or brushes can become detached (leading to a danger of swallowing).

Handpiece HP-44 M (Young System)



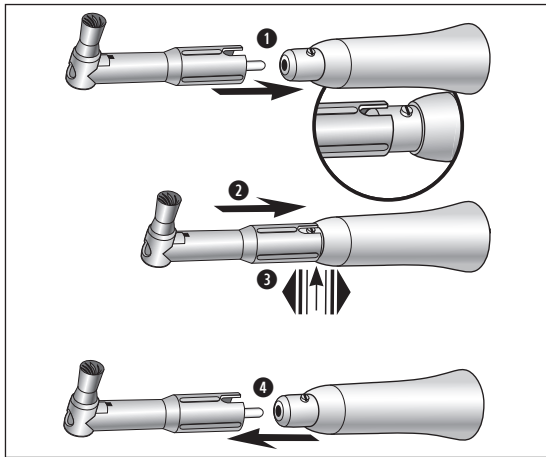
- > The handpiece is provided with an automatic clamping chuck system.
- > Use only disposable heads with plastic shafts. Heads with metal shafts will damage the clamping chuck system.
- > Only use disposable contra-angles with plastic shafts (Doriot system)

Handpiece WP-64 M, WP-64 T (Young System)

- 
- > The head of these handpieces is equipped with a sealing system from Young Dental.
 - > Only use for the Screw-in System cups or brushes from Young Dental (guaranteed effect by Triple-Seal seal).

Handpiece WP-64 MU (Universal System)

- > The head of these handpieces is equipped with a sealing system from W&H.
All standard screw-in cups and brushes (screw thread 1-72 UNF 2A) and snap-on cups and brushes (adaptors provided) can be used.

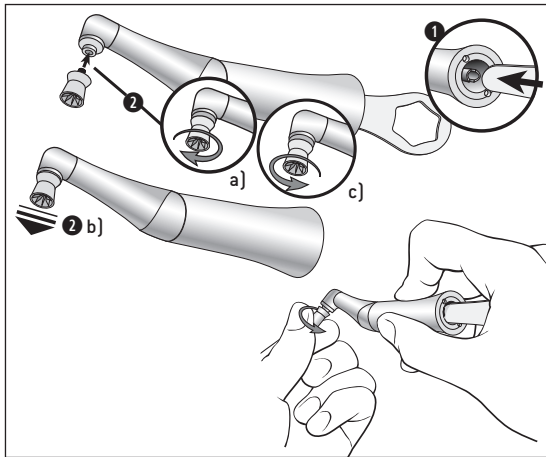


Handpiece

HP-44 M, HP-44 T, HP-44 T MW, HP-44 T SD

> Prophy disposable head

- ❶ Push the disposable head straight onto the handpiece. Align the groove of the disposable head with the nose of the handpiece.
 - ❷ Insert the disposable head as far as the stop.
 - ❸ Ensure a secure connection.
 - ❹ Pull the disposable head straight off the handpiece.
- > Dispose of the head according to the guidelines for disposable articles.



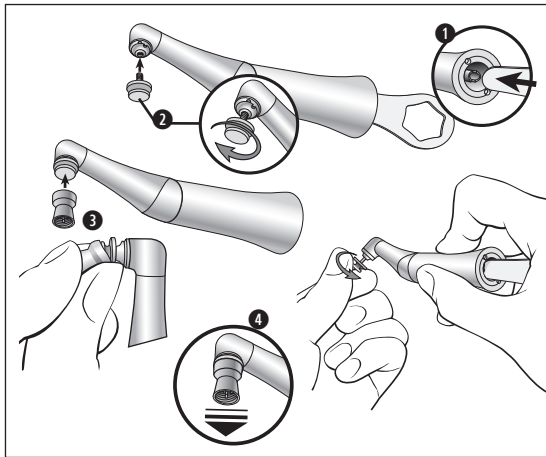
Handpiece WP-64 M, WP-64 T

> Prophy cups or brushes



Lock the handpiece drive:
Insert the key in the driver.

- ① Lock the handpiece drive.
- ② a) Screw the cup or brush as far as possible into the thread of the handpiece head until it is firmly seated.
b) Check that it is held securely.
c) Unscrew to remove the cup or brush.



Handpiece WP-64 MU

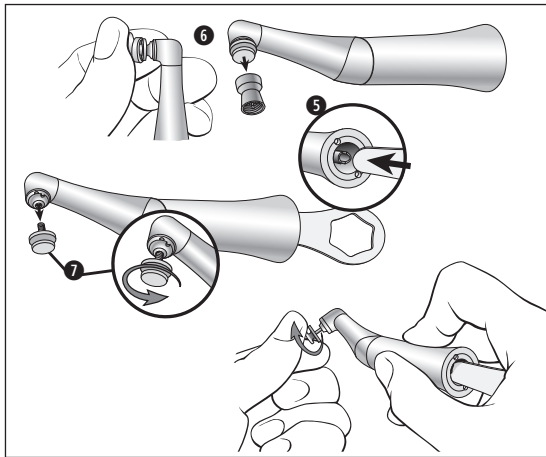
- > Snap-on adapter
- > Prophy cups and brushes



Lock the handpiece drive:
Insert the key in the driver.

- 1 Lock the handpiece drive.
- 2 Screw the screw-in adapter as far as possible into the thread of the handpiece head until it is firmly seated.
- 3 Snap the cup or brush onto the screw-in adapter.
- 4 Check that it is held securely.

or



- ⑤ Lock the handpiece drive.
- ⑥ Pull the cup or brush off the screw-in adapter.
- ⑦ Unscrew to remove the screw-in adapter.

Test



Do not hold the handpiece at eye level when testing to avoid possible injury.

- > Use the disposable head, cap, or brush.
- > Start the handpiece.



- > If you observe problems, such as vibrations, unusual noise, overheating, smell, or leakage, **stop the handpiece immediately** and contact your local retail A-dec dealer or A-dec customer service.

5. Cleaning and maintenance



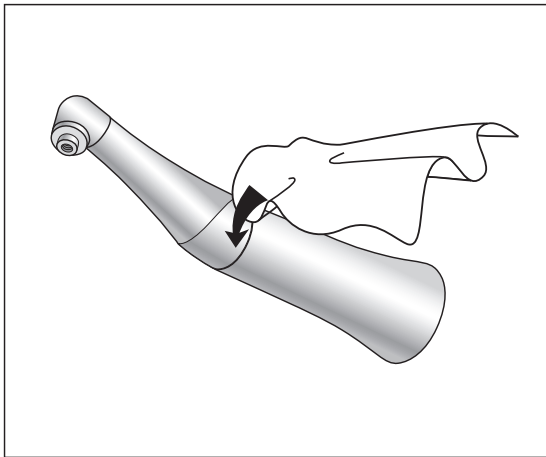
Follow your local directives, standards, and guidelines for cleaning, disinfection, and sterilization.

- > You can process the handpiece manually or automatically.



- > Wear protective clothing and personal protective equipment (PPE).
- > Remove the handpiece from the motor.
- > Remove the disposable head or cup or brush.

- > Clean and disinfect the handpiece **immediately after each patient**, to flush out any liquid (such as blood, saliva, etc.) and to prevent debris from settling on the internal parts.
- > After manual cleaning, disinfection, and lubrication you must sterilize the (wrapped) handpiece using a steam sterilizer.
- > Sterilize the handpiece after each patient, following manual or automated cleaning, disinfection, and lubrication.

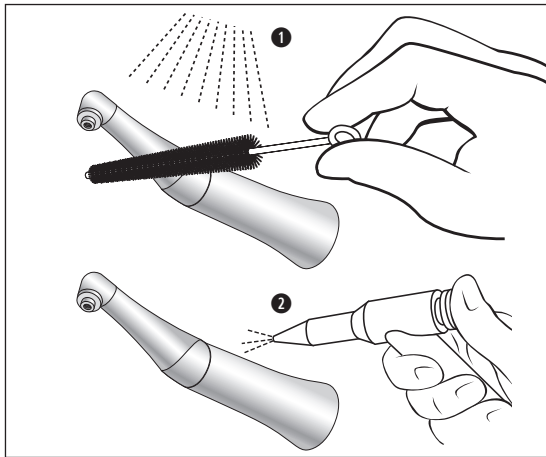


Pre-cleaning

- > If heavily soiled, clean first with disinfectant cloths.



Do not use disinfectants that contain chlorine or protein fixatives.
See manual disinfection on page 26.

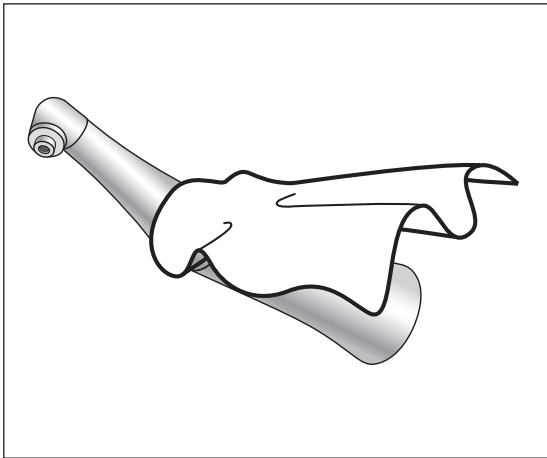


Manual cleaning internal and external

- 1 Rinse and brush off under demineralized water (< 100°F / < 38°C).
- 2 Remove any liquid residues (absorbent cloth, blow dry with compressed air).



Do not place the handpiece in liquid disinfectant or in an ultrasonic bath.




Manual disinfection



A-dec|W&H recommends wiping the handpiece with disinfectant.

- > Use only disinfectants that do not contain chlorine and are certified by officially recognized institutes.
Use EPA-registered surface disinfectants.
- > Note the manufacturer's specifications for the use of the disinfectants.

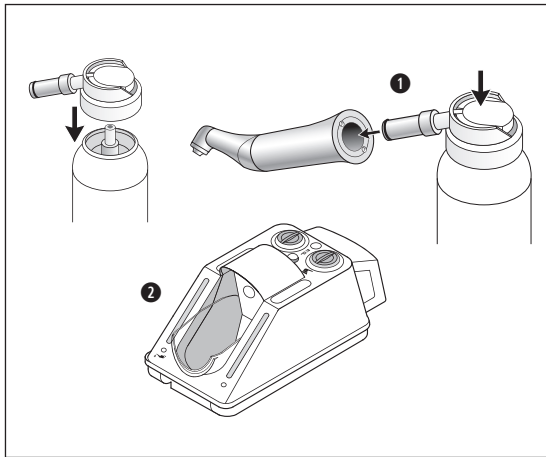
Automated internal and external cleaning and disinfection

 The handpiece can be cleaned and disinfected in a thermal washer disinfectant.

- > Note the manufacturer's specifications on equipment, cleaning agents, and detergents.



- > Make sure that the handpiece is completely dry internally and externally after thermal washer disinfection. Remove any liquid residues with compressed air.
- > Lubricate the dry handpiece immediately after thermal washer disinfection.



Daily lubrication

Recommended lubrication cycles

- > Essential after every internal cleaning
 - > Before each sterilization
- or
- > After 30 minutes of use or at least once daily.

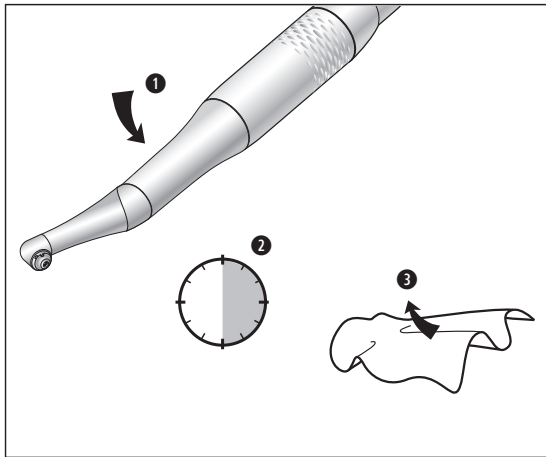
① With A-dec|W&H Oil F1, MD-400

- > Follow the instructions on the oil spray can and the packaging.

or

② With A-dec|W&H Assistina 301 plus

- > See the Assistina instructions for use.



Test following lubrication

- 1 Place the handpiece with the tip/head positioned downward.
- 2 Start the handpiece for 30 seconds to remove excess oil.



> Repeat the entire cleaning and maintenance process if dirt emerges.

- 3 Wipe the handpiece with gauze or soft cloth.



Sterilize the handpiece.

Sterilization and storage

- > Note the instructions of the unit manufacturer.
- > Clean, disinfect, and lubricate the handpiece before sterilizing.
- > Place the handpiece in a standard handpiece sterilization pouch.
- > Make sure that you only remove dry sterile goods from the sterilizer.
- > Store sterile goods dust-free and dry.

The standard ISO 14457 stipulates a durability of at least 250 sterilization cycles.



We recommend that you regularly service the A-dec|W&H handpieces after 1,000 sterilization cycles or one year of use.

Approved sterilization procedures



Follow your local directives, standards, guidelines.


- > Dynamic-air-removal sterilizers: 270°F (132°C) for 4 minutes
- > Gravity displacement sterilizers: 270°F (132°C) for 15 minutes

- > All other sterilization methods are not approved and must not be used.



- > Do not exceed 277°F (136°C) during sterilization.
- > Allow the load to dry for approximately 20 to 30 minutes before removing from the sterilizer.

6. A-dec|W&H accessories and spare parts

 Use only original A-dec|W&H accessories and spare parts or accessories approved by W&H.
Suppliers: A-dec|W&H partners

301	Assistina
10940021	Service Oil F1, MD-400 (6 pcs)
02038200	Spray head with spray adapter
01957300	Key
04530600	Screw-in adapter for snap-on system

For a selection of cups and brushes, visit Young Dental at www.youngdental.com or contact your local A-dec dealer.

7. Technical Data

	HP-44 M HP-44 T WP-64 T	WP-64 M WP-64 MU	HP-44 T SD HP-44 T MW
Coupling Motor/transmission instrument connection according to standard Outer diameter of the grip sheath (inch)	ISO 9168 ISO 3964 0.71	ISO 9168 ISO 3964 0.77	ISO 9168 StarDental®* or Midwest®* –
Transmission ratio	4:1		
Maximum motor speed (rpm)	5,000 – 10,000		

* StarDental® is a registered trademark of DENTALEZ Inc.

* Midwest® is a registered trademark of Dentsply International Inc.

Temperature information

Temperature of the handpiece at the operator side:	maximum 131°F (55°C)
Temperature of the handpiece at the patient side:	maximum 122°F (50°C)
Temperature of the working part (dental bur):	maximum 105.8°F (41°C)

Physical characteristics

Temperature for storage and transport:	-40°F to +158°F (-40°C to +70°C)
Air humidity for storage and transport:	8% to 80% (relative), non-condensing
Ambient temperature during operation:	+50°F to +95°F (+10°C to +35°C)
Air humidity during operation:	15% to 80% (relative), non-condensing

8. Recycling and disposal

Recycling

A-dec|W&H considers that it has a special duty toward the environment. The handpiece along with its packaging has been designed to be as environmentally friendly as possible.



Disposal of the handpiece

Follow your local laws, directives, standards, and guidelines for the disposal of used electrical devices.

Ensure that the parts are not contaminated on disposal.

Disposal of the packaging material

All packaging materials have been selected according to environmentally compatible and disposal aspects and can be recycled. Please send old packaging materials to the relevant collection and reprocessing system. This way, you will contribute to the recycling of raw materials and the reduction of waste.

Warranty

A-dec warrants all products in this document against defects in material or workmanship for one year from time of delivery. A-dec's sole obligation under the warranty is to provide parts for the repair, or at its option, to provide the replacement product (excluding labor). The buyer shall have no other remedy. All special, incidental, and coincidental damages are excluded.

Written notice of breach of warranty must be given to A-dec within the warranty period. The warranty does not cover damage resulting from improper installation or maintenance, accident or misuse. The warranty does not cover damage resulting from the use of cleaning, disinfecting or sterilization chemicals and processes. Failure to follow instructions provided in the A-dec|W&H instructions for use (operation and maintenance instructions) may void the warranty.

No other warranties as to merchantability or otherwise are made.

A-dec | W&H contacts

A-dec Inc.

2601 Crestview Drive

Newberg, OR 97132 USA

Tel: 1.800.547.1883 Within USA/Canada

Tel: 1.503.538.7478 Outside USA/Canada

Fax: 1.503.538.0276

www.a-dec.com

W&H Impex Inc.

6490 Hawthorne Drive, Windsor, Ontario, N8T 1J9

Tel: 1 800 265 6277 Within USA/Canada

Tel: 1.519.944.6739 Outside USA/Canada

Fax: 1.519.974.6121

Distribution

A-dec Inc.

2601 Crestview Drive

Newberg, OR 97132 USA

t 1.800.547.1883, f 1.503.538.0276

www.a-dec.com

Manufacturer

W&H Dentalwerk Bürmoos GmbH

Ignaz-Glaser-Straße 53, 5111 Bürmoos, **Austria**

t + 43 6274 6236-0, f + 43 6274 6236-55

office@wh.com **wh.com**

Form-Nr. 50816 CEN

Rev. 000 / 22.08.2014

Subject to alterations