





## Colouring and Dyeing Leather

If you are looking to spruce up an leather item or completely transform natural veg tanned leather, this selection of colours and dyes will have something for all leathercraft projects. Many of them can be used individually to give a flatter solid colour or layered up with different types to give a blended, aged, or patination effect.

The following colour catalogue has been put together to help you choose which product is right for you.

### ***Things to consider:***

- 1) Is the leather dirty? If so first clean with a damp cloth and mild detergent.
- 2) Is there a resin finish on the leather already? There are two approaches:
  - Dye the resin surface itself with Pro-Dyes, wipe the surface clear of dust/grease before starting. Realistically you can only dye from light to darker shades,
  - Use [Fiebing's Deglazer](#) to remove the old finish first. Do this as evenly as possible, revealing the natural grain before re-dyeing.

Do you want as uniform colour as possible? You may be then be better with a dye rather than a stain, apply with a high density sponge or spray for best results. Alternatively pigments/paints give a more opaque effect.

Do you want an aged look? If so try [Eco Flo Antique Gels](#), or [Identity Leather Stains](#) layered up, starting with the lightest shade first.

Do you want to highlight your carving and tooling? If so use [Eco Flo Hi Lite](#) [Fiebing's Antique Pastes](#), or [Cadence Finger Wax](#) to bring your project to life.

## Useful Information

Water based products hold the dye, pigment or binder products in water rather than spirit/alcohol solution giving a lower environmental impact. They are made to vigorous standards of colour fastness and rub resistance. Fiebing's have two solvent based dye ranges, Leather Dyes and Pro Dyes Both dyes are solvent based however are made up of different types of dyestuffs. The Pro Dye is a pre-metallised dyestuff, they have a metal ion in the dye stuff structure which helps adhere to the leather fibres. They have more solvent content and this penetrates the leather better than Leather Dyes and are generally thought to give a more even surface coating. Leather dyes are made from "basic dyestuffs"

### Tips for colouring:

Dye colours will vary depending on the base colour of the leather. It is always a good idea to test a small area first. Dyes are more opaque giving a solid block appearance, while stains are more translucent allowing for some of the naturalness of the leather to come through. The acrylic paints are totally opaque giving bright uniform colour. (The colours shown on the web site are a representation and may vary in appearance depending upon a user's screen settings.)

### Product Care:

Pour from the bottle into a dish/container to avoid contamination of the bottle contents. Store above 7 degrees centigrade, contents can spoil if allowed to freeze.

### **FURTHER INFORMATION AND HOW TO'S:**

For more detailed information see our website [blog articles](#) or watch our Curious Colourist videos on our [YouTube Channel](#).



## Identity Leather Stain Colour Reference Chart



IDS-WS101  
RAVEN BLACK



IDS-WS102  
BRICK RED



IDS-WS125  
DARK RED



IDS-WS111  
MAHOGANY



IDS-WS112  
CHESTNUT



IDS-WS108  
CHOCOLATE BROWN



IDS-WS109  
CONKER BROWN



IDS-WS110  
BOURNEVILLE  
BROWN



IDS-WS113  
ENGLISH TAN



IDS-WS121  
SLATE GREY



IDS-WS118  
CAMEL



IDS-WS107  
FOREST GREEN

Identity Leather Stains (Water-Based) - Specially selected by The Identity Store for colouring natural vegetable tanned leather as well as mineral tanned leather, these water-based stains give good depth of colour and can be blended or diluted. Stains can give surface translucence and the final colour complemented by the leather colour underneath. The colours depicted are for a guide only and have been based on an approximation from two coats on a natural veg tan but finished colours may vary. As a rule the darker the shade the less this has an effect.

*Colours depicted are for reference only and may vary depending on the leather type and finish they are applied to. Testing on a scrap piece or unseen area is always recommended before starting a project.*

HELEN JONES

@buffalovisionderby



PICTURED

# Identity Water Based Leather Stains



## Identity Leather Stain Colour Reference Chart

/continued



IDS-WS106  
YELLOW OCHRE



IDS-WS120  
ORANGE



IDS-WS123  
PINK



IDS-105  
CRANBERRY



IDS-WS124  
PURPLE



IDS-WS122  
TURQUOISE



IDS-WS103  
MEDIUM BLUE



IDS-WS119  
NAVY



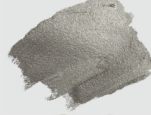
IDS-WS104  
AIRFORCE BLUE



IDS-WS115  
METALLIC GOLD



IDS-WS116  
METALLIC COPPER



IDS-WS114  
METALLIC SILVER



IDS-1117  
SHIMMERING PEARL

As well as coloured-mirco pigments the stains contain a small amount of blended wax that give a soft sheen to leather when buffed up. They are contained in an acrylic binder resin. The metallics can be used to give an a subtle reflective sheen with any of the colours, on their own or blended.

*Finishes— A finish is not necessary, once buffed to activate the wax.*

*If a further finish is desired - Permacoat, Super Shene, ,Satin Shene, Carnauba Cream can be used.*



*Colours depicted are for reference only and may vary depending on the leather type and finish they are applied to. Testing on a scrap piece or unseen area is always recommended before starting a project.*

@tangerinejukebox



PICTURED

# Identity Water Based Leather Stains



## Eco Flo Leather Dye Colour Reference Chart



2600-01  
COAL BLACK



2600-02  
BISON BROWN



2600-03  
JAVA BROWN



2600-05  
TIMBER BROWN



2600-06  
CANYON TAN



2600-07  
RANGE TAN



2600-08  
DARK MAHOGANY



2600-15  
DEEP VIOLET



2600-12  
EVENING BLUE



2600-11  
SCARLETT RED



2600-16  
SUNSHINE YELLOW



2600-14  
FOREST GREEN

Eco Flo Leather Dye - waterbased dyes designed for use on vegetable tanned leather, giving good depth of colour and can be blended or diluted.

*Finishes— depending on the desired look (eg shiny or matt), and functionality (eg water resistance, heat resistance) refer to the Identity finishes chart and guide.*



*Colours depicted are for reference only and may vary depending on the leather type and finish they are applied to. Testing on a scrap piece or unseen area is always recommended before starting a project.*





## Eco-Flo All-in-One Stain & Finish Colour Reference Chart



2605-01

MIDNIGHT BLACK



2605-02

FUDGE BROWN



2605-03

ACORN BROWN



2605-06

DESERT TAN



2605-12

CHERRY

Eco-Flo All-in-One—A combined leather stain and finish in one easy to use application. Ideal for saving time, and great for use with Scout, Guide and Youth groups to get a good quality finish in a short time .

Firm buffing once dry will seal the colour.

No additional finish necessary.



*Colours depicted are for reference only and may vary depending on the leather type and finish they are applied to. Testing on a scrap piece or unseen area is always recommended before starting a project.*



## Eco-Flo Antique Gel Colour Reference Chart



2607-01  
BLACK



2607-02  
DARK BROWN



2607-03  
MEDIUM BROWN



2607-04  
TAN



2607-05  
SADDLE TAN



2607-07  
BRIAR BROWN



2607-06  
MAHOGANY

Eco-Flo Antique Gel—These gels have proven very popular and are designed to work on vegetable tanned leather to give a more layered depth of finish. They work by holding un- blended pigments in a wax suspension that allows for colours to be worked to rich, deep, mellow tones. Firm buffing will bring up the wax to seal the colours and give a soft gloss finish.

*Additional Finishes if required:  
Carnauba Cream, DucksWax*



*Colours depicted are for reference only and may vary depending on the leather type and finish they are applied to. Testing on a scrap piece or unseen area is always recommended before starting a project.*



PICTURED

**Eco-Flo Antique Gel**



## Fiebing's Leather Dye Colour Reference Chart



IDS-LD001  
BLACK



IDS-LD001A  
USMC BLACK



IDS-LD002  
CHOCOLATE



IDS-LD003  
DARK BROWN



IDS-LD004  
MEDIUM BROWN



IDS-LD005  
LIGHT BROWN



IDS-LD007  
MAHOGANY



IDS-LD008  
BRITISH TAN



IDS-LD009  
TAN



IDS-LD028  
MOCCASIN BROWN



IDS-LD016  
RED



IDS-LD014  
MAROON



IDS-LD010  
LIGHT TAN



IDS-LD012  
OXBLOOD



IDS-LD013  
DARK RED



IDS-LD015  
BURGUNDY

Fiebing's Leather Dye in a wide range of assorted colours. These are solvent based traditional leather dyes developed for use on vegetable tanned leather.

USMC Black shade gives a more intense black, developed for the US Marine Corp.

*Colours depicted are for reference only and may vary depending on the leather type and finish they are applied to. Testing on a scrap piece or unseen area is always recommended before starting a project.*

PICTURED

# Fiebing's Leather Dye





## Fiebing's Leather Dye Colour Reference Chart

/continued



IDS-LD006  
CORDOVAN



IDS-LD011  
RUSSET



IDS-LD27  
BEIGE



IDS-LD026  
BUCKSKIN



IDS-LD024  
YELLOW



IDS-LD025  
ORANGE



IDS-LD020  
TURQUOISE



IDS-LD019  
LIGHT BLUE



IDS-LD018  
NAVY



IDS-LD023  
AQUA GREEN



IDS-LD021  
GREEN



IDS-LD022  
KELLY GREEN



IDS-LD017  
PURPLE

They will work with other leather types though Deglazer\* may be needed to prepare the leather first.

*Suggested Finishes—Acrylic Resolene, Super Shene, DucksWax. Depending on the desired look (eg shiny or matt), and functionality (eg water resistance, heat resistance) refer to the Identity finishes chart and guide.*

*Colours depicted are for reference only and may vary depending on the leather type and finish they are applied to. Testing on a scrap piece or unseen area is always recommended before starting a project.*



## Fiebing's Pro Dye Colour Reference Chart



IDS-PD001  
BLACK



IDS-PD003  
DARK BROWN



IDS-PD006  
CHOCOLATE



IDS-PD004  
LIGHT BROWN



IDS-PD005  
SADDLE TAN



IDS-PD008  
WALNUT



IDS-PD007  
MAHOGANY



IDS-PD016  
ENGLISH BRIDLE



IDS-PD013  
SHOW BROWN



IDS-PD015  
SPANISH BROWN



IDS-PD014  
GOLDEN BROWN



IDS-PD009  
ROYAL BLUE



IDS-PD010  
RED



IDS-PD012  
YELLOW



IDS-PD011  
GREEN

Fiebing's Professional Dyes have been used for dyeing vegetable tanned leathers in leatherwork for many decades. They contain a pre-metallised dyestuff which helps adhere to the leather fibres. They have more solvent content and this penetrates the leather further and are generally thought to give a more even surface coating. . Apply using a damp sponge, wool daubers or the premium applicator pads.

*Suggested Finishes: Acrylic Resolene, Permacoat, DucksWax. Depending on the desired look (eg shiny or matt), and functionality (eg water resistance, heat resistance) refer to the Identity finishes chart and guide.*

*Colours depicted are for reference only and may vary depending on the leather type and finish they are applied to. Testing on a scrap piece or unseen area is always recommended before starting a project.*



## Cadence Hybrid Acrylic Paints for Leather and more



Make your leather craft a work of art with Cadence Hybrid Paint. This leathercraft paint is perfect for adding custom colour and decorating your leather creations. Get creative and get crafty. The colours mix well and can be thinned and blended using our [Paint Extender](#) for different effects.



*Colours depicted are for reference only and may vary depending on the leather type and finish they are applied to. Testing on a scrap piece or unseen area is always recommended before starting a project.*



PICTURED

# Cadence Hybrid Paint





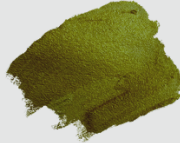
## Cadence Hybrid Acrylic Pearlisted Paints



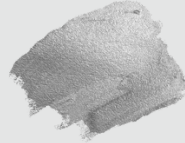
**Gold**



**Dark Gold**



**Walnut**



**Silver**

## Cadence Dora Leather Paints Metallic



**Gold**



**Antique Gold**



**Bronze**



**Platinum**



**Silver**



**Pearl**

The Pearlisted Metallic Paints give a more subtle effect – a stain shimmer and can work well to add highlights to artwork, for example if you were painting a wolf howling at the moon, adding some silver and the pearl can create some rather special play of light that will really add to the atmosphere of the piece.

The Dora Paints have small metallic mica particles that give textured and bright gilt effects when painted. To get the best results from this use the paint fairly thickly or layer up. To create a textured area, you can dab on.



*Colours depicted are for reference only and may vary depending on the leather type and finish they are applied to. Testing on a scrap piece or unseen area is always recommended before starting a project.*

LISA JOHNSON

@lisajjohnson\_art



PICTURED

**Cadence Metallic Paint**



## Cova Colour Leather Paint Colour Reference Chart



2602-01  
BLACK



2602-02  
DARK BROWN



2602-17  
GREY



2602-18  
PURPLE



2600-12  
ROYAL BLUE



2602-06  
RED



2602-07  
YELLOW



2602-05  
KELLY GREEN



2602-10  
TURQUOISE



2602-09  
ORANGE



2602-14  
DARK PINK



2602-08  
WHITE



2602-20  
GOLD



2602-21  
SILVER



2602-22  
COPPER

Eco-Flo Cova Colour Leather Paints— specially formulated to work on leather. When used full strength they are opaque giving a true bold colour. The paints can be diluted with water to give a wash or tint or to give coverage over a larger area. Paints can be mixed to create your own colours and are ideal for accent details, painting and for carving work. Suitable for vegetable and aniline mineral tanned leathers.

*Suggested Finishes— Permacoat, , Super Shene, Satin Shene, Acrylic Resolene. Depending on the desired look (eg shiny or matt), and functionality (eg water resistance, heat resistance) refer to the Identity finishes chart and guide.*



*Colours depicted are for reference only and may vary depending on the leather type and finish they are applied to. Testing on a scrap piece or unseen area is always recommended before starting a project.*

TONY FULTON

@fatbobcrafts

PICTURED

Cadence Hybrid Paint





## Identity Leading Edge Paint Colour Reference Chart



IDS-WBLE101  
BLACK



IDS-WBLE102  
WHITE



IDS-WBLE103  
GREY



IDS-WBLE104  
NAVY



IDS-WBLE105  
COBALT BLUE



IDS-WBLE106  
PURPLE



IDS-WBLE107  
RED



IDS-WBLE108  
FUSCHIA PINK



IDS-WBLE115  
DARK BROWN



IDS-WBLE116  
BROWN



IDS-WBLE117  
OXBLOOD



IDS-WBLE118  
TAN



IDS-WBLE113  
GREEN

Identity Leading Edge Paint—Easy and quick to apply edge finish in a wide variety of colours that can be mixed and blended to create bespoke colours. This edge coat has been designed to work best with The Identity Store Edge Foundation acting as a base primer and filler. Dries to a flexible matt finish. Suitable for use on all leather types, including chrome leather. For more information on how to use these edge finishes watch “[Edge Finishing Leather](#)” on our YouTube Channel.

*Suggested Finishes— Identity Store Leading Edge Top Coat Matt or Gloss, or Veg Protec wax.*



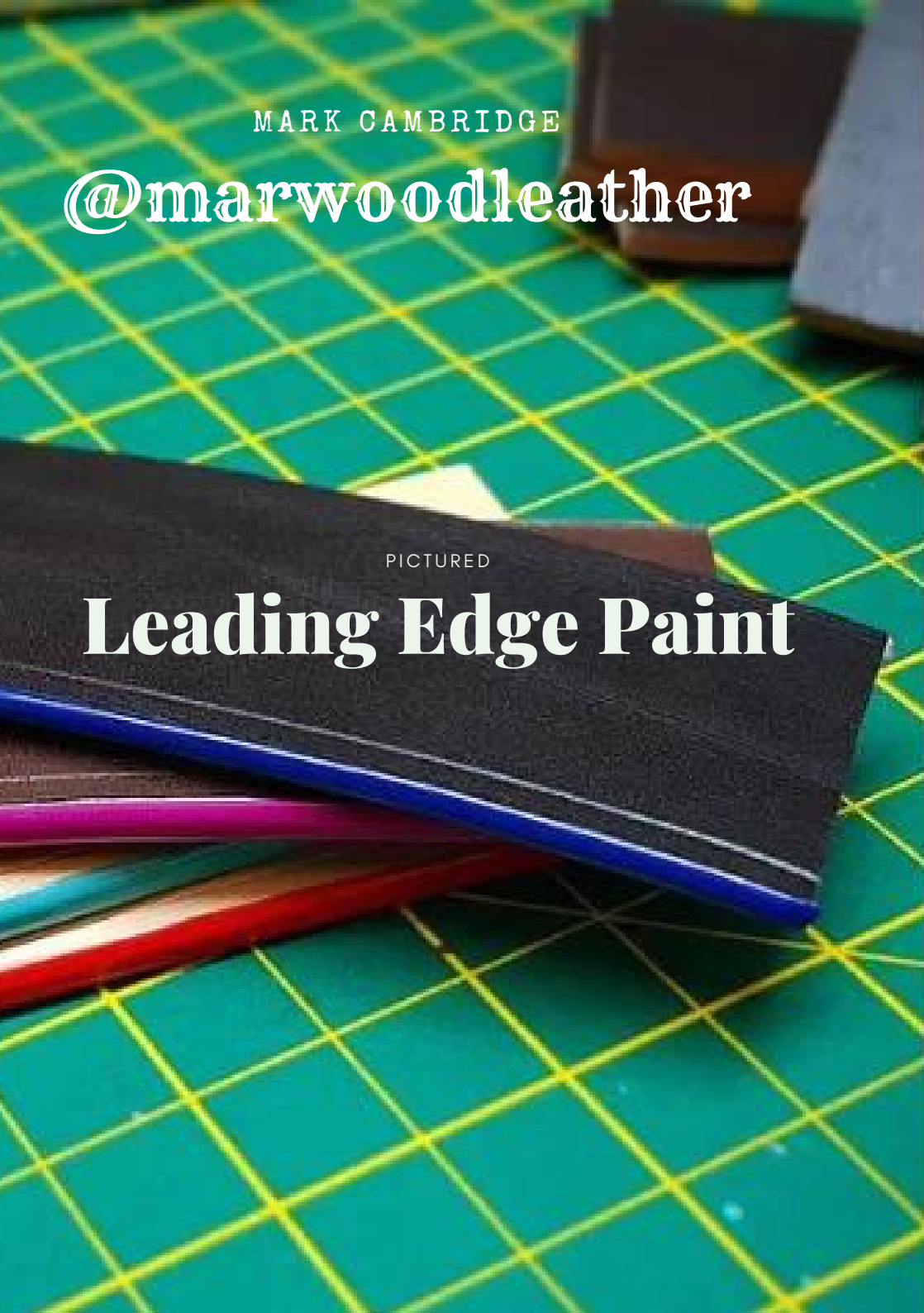
*Colours depicted are for reference only and may vary depending on the leather type and finish they are applied to. Testing on a scrap piece or unseen area is always recommended before starting a project.*

MARK CAMBRIDGE

@marwoodleather

PICTURED

# Leading Edge Paint





## Fiebing's Edge Kote Colour Reference Chart



IDS-EK01  
BLACK



IDS-EK02  
DARK BROWN



IDS-EK03  
MEDIUM BROWN



IDS-EK05  
TAN



IDS-EK07  
NEUTRAL

Fiebing's Edge Kote— a tried and tested product to give a professional edge to your leatherwork projects. Specially formulated to work with vegetable tanned leathers, apply after edge slicking the leather with gum tragacanth and once dry buff up to a mid sheen that is water resistant, and flexible.

*Finishes— for added gloss use the clear Neutral as a top coat.*

*Colours depicted are for reference only and may vary depending on the leather type and finish they are applied to. Testing on a scrap piece or unseen area is always recommended before starting a project.*





## Eco-Flo HiLite Colour Reference Chart



2608-01  
SMOKE BLACK



2608-03  
BRIAR BROWN



2605-04  
CHESTNUT



2608-05  
SADDLE TAN

Eco-Flo Hi-Lite— This product is used as a light stain to help enhance cuts and stamped impressions on tooled and carved leather craft. It is a thicker consistency than a usual dye or stain and will sit as a darker colour in the lower impressions of the leather. Watch the [How-to video from Tandy Leathercraft](#) to see how to apply.

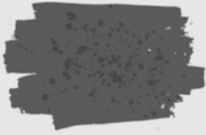
*Suggested Finishes: Super Shene, Satin Shene, Acrylic Resolene, Permacoat. Depending on the desired look (eg shiny or matt), and functionality (eg water resistance, heat resistance) refer to the Identity finishes chart and guide.*



*Colours depicted are for reference only and may vary depending on the leather type and finish they are applied to. Testing on a scrap piece or unseen area is always recommended before starting a project.*



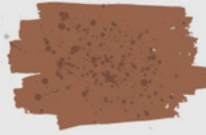
## Fiebing's Antique Finish Colour Reference Chart



21980  
BLACK



21980  
DARK BROWN



21980  
MEDIUM BROWN



21980  
LIGHT BROWN



21980  
BRITISH TAN



21980  
MAHOGANY



21980  
NEUTRAL

Fiebing's Antique Paste—designed to work on vegetable tanned leather to give a more layered depth of finish, and to highlight and contrast tooled, carved and stamped areas.

Firm buffing will bring up the wax to seal the colours and give a soft gloss finish.

Suggested Finishes—DucksWax, Carnauba Cream

*Colours depicted are for reference only and may vary depending on the leather type and finish they are applied to. Testing on a scrap piece or unseen area is always recommended before starting a project.*

# Customer Gallery



PETER SMITH

@psleathercraftuk

PICTURED

**Fiebing's Pro Dye**

# Preparation, Finishing and Conditioning



We offer a wide choice of finishes, protectors, conditioners and rejuvenators to give protective surfaces to leather work, to encourage water resistance and water proofing, to help restore or replenish the natural oils in leather and to give different appearances. To help you decide which finish you would like for your project we have put together the following information.

## **PREPARATIONS, CLEANERS AND RESTORERS**

Fiebing's Deglazer – to help remove grease, dirt and any surface finish or top coat that would impede the absorption of the new colour or treatment.

Fiebing's Dye Prep - A liquid solution that helps cleans and prepares the leather ready to accept the dye stuff. It works by helping to adjust the PH factor of the leather surface making it more receptive to the dye. Designed to work best with Fiebing's Leather Dyes and Fiebing's Pro Dyes.

Dr Jackson's Hide Rejuvenator – for restoring dried out smooth leather items from boots, garments, furniture, car upholstery and saddles. It has a deep penetrating action that gives superior results.  
Note – it may darken lighter colour leathers.

Fiebing's Four Way Care – lifts dirt, cleans, replenishes and conditions leather. Easy to use and suitable for chrome leathers such as upholstery, garments.

Fiebing's Saddle Soap - cleans, lubricates leather especially saddlery



# TOP FINISHES/LACQUERS

These types of finish sit as a barrier layer on the surface of the leather offering protection and a lustre to bring to life colours, patination and any carving and tooling or other surface decoration.

Product	Appearance	Water & Stain Resistance	Water Repellency	Conditioning	Additional Information
<a href="#"><u>Super Shene</u></a>	Gloss – high sheen	✓			Protective clear layer gives a high gloss when polished
<a href="#"><u>Satin Shene</u></a>	Satin - mid sheen	✓			Protective clear layer gives a soft sheen when polished
<a href="#"><u>Tan Kote</u></a>	Satin - mid sheen				Very useful for applying to the flesh side to smooth down fibres
<a href="#"><u>Acrylic Resolene</u></a>	Gloss – high sheen	✓			Top finish that goes down a little blue but dries clear to give a high gloss when polished. May slightly darken lighter colours.
<a href="#"><u>Permacoat</u></a>	Mid to low soft sheen	✓	✓		A top finish with nano particles that makes it smooth to apply, water repellent and heat protective.
<a href="#"><u>Permaprotect</u></a>	Mid to low soft sheen	✓	✓		With added anti-microbial properties.
<a href="#"><u>Collonil Carbon Pro</u></a>	Can darken then dries clear	✓	✓		An aerosol spray water repellent finish for leather and suedes. *Incurs additional shipping costs
<a href="#"><u>Collonil Protect &amp; Care</u></a>	Soft Sheen	✓	✓	✓	A natural non-chemical waterproofing and conditioning spray for leather, made using olive oil.

# Waxes

Waxes are often held in a cream or paste form that can easily be worked into the leather surface making it softer. The leathers should then be buffed well to bring up the lustre and soft sheen of the wax. This action creates a burnished surface that then has greater protective properties.

Product	Appearance	Water & Stain Resistance	Water Repellency	Conditioning	Additional Information
<a href="#"><u>Carnauba Cream</u></a>	Satin - mid sheen	✓		✓	Protective clear layer gives a high gloss when polished
<a href="#"><u>Leather Balm &amp; Atom Wax</u></a>	Satin - mid sheen	✓		✓	Liquid wax finish - may slightly darken lighter colours
<a href="#"><u>Veg Protec</u></a>	Satin - mid sheen	✓	✓	✓	A blend of UK beeswax and walnut oil that is very clear, light application, buffed up gives good water-proofing and a natural feel to the leather
<a href="#"><u>Ko-Cho-Line</u></a>	Will revive colour on old leathers			✓	A conditioning grease with antimould to protect, preserve and keep leather soft – typically used in Falconry. Will darken light colour leather.
<a href="#"><u>Aussie Conditioner</u></a>	Slight waxy touch, soft sheen	✓	✓	✓	A beeswax conditioner that gives protection for extreme conditions.
<a href="#"><u>Ducks Wax</u></a>	Soft Sheen	✓	✓	✓	English made waterproofing soft natural wax that is easy to apply. Light neutral finish. Suitable for veg and chrome leathers
<a href="#"><u>Fiebing's Snow Paste</u></a>	Soft Sheen	✓	✓	✓	Weather-proofing formula, conditions and protects, very clear.
<a href="#"><u>Fiebing's Mink Oil Preserver</u></a>	Soft Sheen	✓	✓	✓	Waterproofing and softening oils in a wax paste. May darken light colour leathers.



# OILS (FAT LIQUOR RESTORATIVES)

These products are useful for leathers that have become a little stiff and need some additional care. They should be used sparingly to allow the leather to still breathe and should be well worked in to give the most benefit

Product	Appearance	Water & Stain Resistance	Water Repellency	Conditioning	Additional Information
<a href="#"><u>Neatsfoot Oil</u></a>	Surface will be slightly greasy until the oil is worked in	✓		✓	Used for re-conditioning leather that has been outdoors, prevents leather from drying out. Will darken light coloured leather.
<a href="#">Neatsfoot Oil Compound</a>	Surface will be slightly greasy until the oil is worked in	✓		✓	Neatsfoot and other oils blended - used for re-conditioning leather that has been outdoors, prevents leather from drying out. Will darken light coloured leather
<a href="#">Fiebing's Saddle Soap Liquid Glycerine</a>	Satin - mid sheen	✓		✓	In a spray form, cleans and preserves leather and can be buffed to a satin sheen.
<a href="#">4 Way Care</a>	Satin - mid sheen,, revives colours	✓	✓	✓	Contains a mix of leather soaps to remove dirt, waxes and replenishing oils, leaves no residue, can be used on upholstery. May slightly darken light colours.
<a href="#">Golden Mink Oil Liquid</a>	Satin - mid sheen	✓	✓	✓	A blend of mink oil and neatsfoot oil that softens, preserves and waterproofs.



Identity Leathercraft started life as The Identity Store, founded by Peter and Jackie Laight in 2002 to help people express their identity through the things they make from leather.

The company has grown and with it our collective experience and knowledge of the properties and methods for making and using leather as a craft material. So whatever you would like to make, repair, restore or invent out of leather this is the store for you.

As well as on line you can find us at shows and events around the country, including leather sales and open days at our premises in Matlock, the gateway to the Peak District.

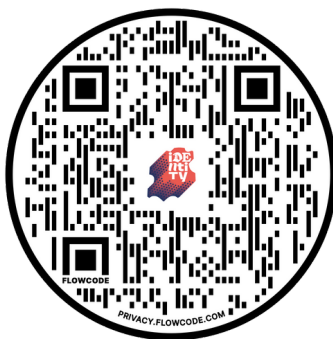
Details of events, workshops, leather sales and open days can be found on the News page of our website, and on our social media. To keep in touch with shows and events you can also subscribe to our newsletter.

### How to Order

[www.identityleathercraft.com](http://www.identityleathercraft.com)

[sales@theidentitystore.co.uk](mailto:sales@theidentitystore.co.uk)

Phone 01629 581403



The Identity Store Ltd  
Holt Lane Matlock DE4 3LY  
Telephone 01629 581403  
Email [sales@theidentitystore.co.uk](mailto:sales@theidentitystore.co.uk)

[www.identityleathercraft.com](http://www.identityleathercraft.com)