

identity
TV



COLOURING LEATHER
DYES, STAINS AND PAINTS
FROM THE IDENTITY STORE



Colouring and Dyeing Leather

Whether you are looking to re-dye an old pair of shoes or completely transform natural veg tanned leather this selection of colours and dyes will have something for all leathercraft projects. Many of them can be used individually to give a flatter solid colour or layered up with different types to give a blended, aged, or patination effect.

The following colour catalogue has been put together to help you choose which product is right for you.

Things to consider:

Is there a resin finish on the leather already? There are two approaches:

Dye the resin surface itself with Pro-Dyes, wipe the surface clear of dust/grease before starting. Obviously you can only dye from light to darker shades.

Use Fiebing's Deglazer to remove the old finish first. Do this as evenly as possible, revealing the natural grain before re-dyeing.

2) Is the leather dirty? If so first clean with a damp cloth and mild detergent. Do you want as uniform colour as possible? You may be better with a dye rather than a stain, apply with a high density sponge or spray for best results.

Do you want an aged look? If so try Eco Flo Antique Gels, or Identity Leather Stains layered up, starting with the lightest shade first.

Do you want to highlight your carving and tooling? If so use Eco Flo Hi Lite or Fiebing's Antique Pastes to bring your project to life.

Useful Information

Water based products hold the dye pigment and binder products in a water rather than spirit/alcohol solution making them better for the environment and for the user.

They are made to vigorous standards of colour fastness and rub resistance. Fiebing's have two solvent based dye ranges, Leather Dyes and Pro Dyes Both dyes are solvent based however are made up of different degrees of dyestuffs. The Pro Dye is a pre-metallised dyestuff, they have a metal ion in the dye stuff structure which helps adhere to the leather fibres. They have more solvent content and penetrates the leather better than Leather Dyes and are generally thought to give a more even surface coating.

Tips for colouring:

Dye colours will vary depending on the base colour of the leather. It is always a good idea to test a small area first. Dyes are more opaque giving a solid block appearance while stains are more translucent allowing for some of the naturalness of the leather to come through. The acrylic paints are totally opaque giving bright uniform colour. (The colours shown on the web site are a representation and may vary in appearance depending upon a user's screen settings.)

Product Care:

Pour from the bottle into a container to use to avoid contamination of the bottle contents. Store above 7 degrees centigrade, contents can spoil if allowed to freeze.



Identity Leather Stain Colour Reference Chart



IDS-WS101
RAVEN BLACK



IDS-WS102
BRICK RED



IDS-WS125
DARK RED



IDS-WS111
MAHOGANY



IDS-WS112
CHESTNUT



IDS-WS108
CHOCOLATE BROWN



IDS-WS109
CONKER BROWN



IDS-WS110
BOURNEVILLE
BROWN



IDS-WS113
ENGLISH TAN



IDS-WS121
SLATE GREY



IDS-WS118
CAMEL



IDS-WS107
FOREST GREEN

Identity Leather Stains (Water-Based) - Specially selected by The Identity Store for colouring natural vegetable tanned leather as well as mineral tanned leather, these waterbased stains give good depth of colour and can be blended or diluted. As well as coloured-mirco pigments the stains contain a small amount of blended waxes that give a soft sheen to leather when buffed up. They are contained in an acrylic binder resin.

The metallics can be used diluted to give an over- wash effect and a subtle reflective sheen to any of the colours.

Colours depicted are for reference only and may vary depending on the leather type and finish they are applied to. Testing on a scrap piece or unseen area is always recommended before starting a big project.



Identity Leather Stain Colour Reference Chart

/continued



IDS-WS106
YELLOW OCHRE



IDS-WS120
ORANGE



IDS-WS123
PINK



IDS-105
CRANBERRY



IDS-WS124
PURPLE



IDS-WS122
TURQUOISE



IDS-WS103
MEDIUM BLUE



IDS-WS119
NAVY



IDS-WS104
AIRFORCE BLUE



IDS-WS115
METALLIC GOLD



IDS-WS116
METALLIC COPPER



IDS-WS114
METALLIC SILVER



IDS-1117
SHIMMERING PEARL

Stains are more translucent and the final colour will be affected by the leather colour underneath. The colours depicted are for a guide only and have been based on an approximation from two coats on a natural veg tan but finished colours may vary. As a rule the darker the colour the less this has an effect.

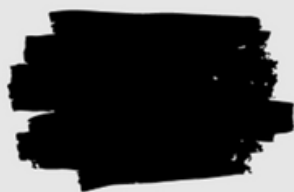
Finishes—Permacoat, Super Shene, ,Satin Shene, Carnauba Cream



Colours depicted are for reference only and may vary depending on the leather type and finish they are applied to. Testing on a scrap piece or unseen area is always recommended before starting a big project.



Eco Flo Leather Dye Colour Reference Chart



2600-01
COAL BLACK



2600-02
BISON BROWN



2600-03
JAVA BROWN



2600-05
TIMBER BROWN



2600-06
CANYON TAN



2600-07
RANGE TAN



2600-08
DARK MAHOGANY



2600-15
DEEP VIOLET



2600-12
EVENING BLUE



2600-11
SCARLETT RED



2600-16
SUNSHINE YELLOW



2600-14
FOREST GREEN

Eco Flo Leather Dye - waterbased dyes designed for use on vegetable tanned leather and give good depth of colour and can be blended or diluted.

Finishes— Permacoat, , Super Shene, Satin Shene, Acrylic Resolene



Colours depicted are for reference only and may vary depending on the leather type and finish they are applied to. Testing on a scrap piece or unseen area is always recommended before starting a big project.



Cova Colour Leather Paint Colour Reference Chart



2602-01
BLACK



2602-02
DARK BROWN



2602-17
GREY



2602-18
PURPLE



2600-12
ROYAL BLUE



2602-06
RED



2602-07
YELLOW



2602-05
KELLY GREEN



2602-10
TURQUOISE



2602-09
ORANGE



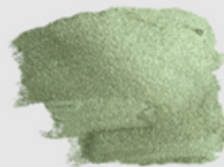
2602-14
DARK PINK



2602-08
WHITE



2602-20
GOLD



2602-21
SILVER



2602-22
COPPER

Cova Colour Leather Paints— specially formulated to work on leather. When used full strength they are opaque giving a true bold colour. The paints can be diluted with water to give a wash or tint or to give coverage over a larger area. Paints can be mixed to create your own colours and are ideal for accent details, painting and for carving work. Suitable for vegetable and aniline mineral tanned leathers.

Finishes— Permacoat, , Super Shene, Satin Shene, Acrylic Resolene



Colours depicted are for reference only and may vary depending on the leather type and finish they are applied to. Testing on a scrap piece or unseen area is always recommended before starting a big project.



Eco-Flo All-in-One Stain & Finish Colour Reference Chart



2605-01

MIDNIGHT BLACK



2605-02

FUDGE BROWN



2605-03

ACORN BROWN



2605-06

DESERT TAN



2605-12

CHERRY

Eco-Flo All-in-one—A combined leather stain and finish in one easy to use application. Ideal for saving time, and great for use with Scout, Guide and Youth groups to get a good quality finish in a short time . Firm buffing once dry will seal the colour. No additional finish necessary.



Colours depicted are for reference only and may vary depending on the leather type and finish they are applied to. Testing on a scrap piece or unseen area is always recommended before starting a big project.



Eco-Flo Antique Gel Colour Reference Chart



2607-01
BLACK



2607-02
DARK BROWN



2607-03
MEDIUM BROWN



2607-04
TAN



2607-05
SADDLE TAN



2607-07
BRIAR BROWN



2607-06
MAHOGANY

Eco-Flo Antique Gel—These gels have proven very popular and are designed to work on vegetable tanned leather to give a more layered depth of finish. They work by holding un-blended pigments in a wax suspension that allows for colours to be worked to rich, deep, mellow tones.

Firm buffing will bring up the wax to seal the colours and give a soft gloss finish.

Additional Finishes if required:

Carnauba Cream, DucksWax, Permacoat



Colours depicted are for reference only and may vary depending on the leather type and finish they are applied to. Testing on a scrap piece or unseen area is always recommended before starting a big project.



Fiebing's Leather Dye Colour Reference Chart



IDS-LD001
BLACK



IDS-LD001A
USMC BLACK



IDS-LD002
CHOCOLATE



IDS-LD003
DARK BROWN



IDS-LD004
MEDIUM BROWN



IDS-LD005
LIGHT BROWN



IDS-LD007
MAHOGANY



IDS-LD008
BRITISH TAN



IDS-LD009
TAN



IDS-LD028
MOCCASIN BROWN



IDS-LD016
RED



IDS-LD014
MAROON



IDS-LD010
LIGHT TAN



IDS-LD012
OXBLOOD



IDS-LD013
DARK RED



IDS-LD015
BURGUNDY

Fiebing's Leather Dye in a wide range of assorted colours. These are solvent based traditional leather dyes for developed for use on vegetable tanned leather. They will work with other leather types though 'Deglazer*' may be needed to prepare the leather first.

(*This product is only available for shipping within the UK.)

Colours depicted are for reference only and may vary depending on the leather type and finish they are applied to. Testing on a scrap piece or unseen area is always recommended before starting a big project.



Fiebing's Leather Dye Colour Reference Chart

/continued



IDS-LD006
CORDOVAN



IDS-LD011
RUSSET



IDS-LD27
BEIGE



IDS-LD026
BUCKSKIN



IDS-LD024
YELLOW



IDS-LD025
ORANGE



IDS-LD020
TURQUOISE



IDS-LD019
LIGHT BLUE



IDS-LD018
NAVY



IDS-LD023
AQUA GREEN



IDS-LD021
GREEN



IDS-LD022
KELLY GREEN



IDS-LD017
PURPLE

USMC Black shade gives a more intense black, developed for the US Marine Corp.

Finishes—Acrylic Resolene, Super Shene, DucksWax

Colours depicted are for reference only and may vary depending on the leather type and finish they are applied to. Testing on a scrap piece or unseen area is always recommended before starting a big project.



Fiebing's Pro Dye Colour Reference Chart



IDS-PD001
BLACK



IDS-PD003
DARK BROWN



IDS-PD006
CHOCOLATE



IDS-PD004
LIGHT BROWN



IDS-PD005
SADDLE TAN



IDS-PD008
WALNUT



IDS-PD007
MAHOGANY



IDS-PD016
ENGLISH BRIDLE



IDS-PD013
SHOW BROWN



IDS-PD015
SPANISH BROWN



IDS-PD014
GOLDEN BROWN



IDS-PD009
ROYAL BLUE



IDS-PD010
RED



IDS-PD012
YELLOW



IDS-PD011
GREEN

Fiebing's Professional Dyes have been used for dyeing vegetable tanned leathers in leatherwork for many decades. They are alcohol (solvent) based and offer excellent smooth coverage and colourfastness. Apply using a damp sponge, wool daubers or the premium applicator pads.

This product is only available within the UK.

Finishes: Acrylic Resolene, Permacoat, DucksWax

Colours depicted are for reference only and may vary depending on the leather type and finish they are applied to. Testing on a scrap piece or unseen area is always recommended before starting a big project.



Fiebing's Edge Kote Colour Reference Chart



IDS-EK01
BLACK



IDS-EK02
DARK BROWN



IDS-EK03
MEDIUM BROWN



IDS-EK04
CORDOVAN



IDS-EK05
TAN



IDS-EK05
LIGHT TAN



IDS-EK07
NEUTRAL

Fiebing's Edge Kote— a tried and tested product to give a professional edge to your leatherwork projects. Specially formulated to work with vegetable tanned leathers, apply after edge slicking the leather with gum tragacanth and once dry buff up to a mid sheen that is water resistant, and flexible.

Finishes— for added gloss use the clear Neutral as a top coat.

Colours depicted are for reference only and may vary depending on the leather type and finish they are applied to. Testing on a scrap piece or unseen area is always recommended before starting a big project.



Identity Leading Edge Paint Colour Reference Chart



IDS-WBLE101
BLACK



IDS-WBLE102
WHITE



IDS-WBLE103
GREY



IDS-WBLE104
NAVY



IDS-WBLE105
COBALT BLUE



IDS-WBLE106
PURPLE



IDS-WBLE107
RED



IDS-WBLE108
FUSCHIA PINK



IDS-WBLE109
ORANGE



IDS-WBLE110
YELLOW



IDS-WBLE111
TURQUOISE



IDS-WBLE112
TEAL

Identity Leading Edge Paint—Easy and quick to apply edge finish in a wide variety of colours that can be mixed and blended to create bespoke colours. This edge coat has been designed to work best with The Identity Store Edge Foundation acting as a base primer and filler. Dyes to a flexible matt finish. Suitable for use on all leather types, including chrome leather.



Colours depicted are for reference only and may vary depending on the leather type and finish they are applied to. Testing on a scrap piece or unseen area is always recommended before starting a big project.



Identity Leading Edge Paint Colour Reference Chart

/continued



IDS-WBLE113
GREEN



IDS-WBLE114
MOSS GREEN



IDS-WBLE115
DARK BROWN



IDS-WBLE116
BROWN



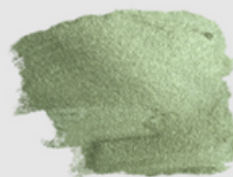
IDS-WBLE117
OXBLOOD



IDS-WBLE118
TAN



IDS-WBLE20
GOLD



IDS-WBLE21
SILVER

For more information on how to use these edge finishes watch “How to Edge Leathers” on YouTube

Finishes— Identity Store Leading Edge Top Coat Matt or Gloss, or Veg Protec wax.



Eco-Flo HiLite Colour Reference Chart



2608-01
SMOKE BLACK



2608-03
BRIAR BROWN



2605-04
CHESTNUT



2608-05
SADDLE TAN

Eco-Flo Hi-Lite— This product is used as a light stain to help enhance cuts and stamped impressions on tooled and carved leather craft. It is a thicker consistency than a usual dye or stain and will sit as a darker colour in the lower impressions of the leather. Watch the How-to video from Tandy Leathercraft to see how to apply.

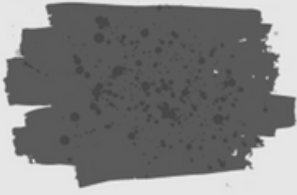
Finishes: Super Shene, Satin Shene, Acrylic Resolene, Permacoat



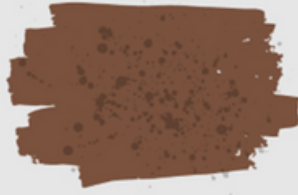
Colours depicted are for reference only and may vary depending on the leather type and finish they are applied to. Testing on a scrap piece or unseen area is always recommended before starting a big project.



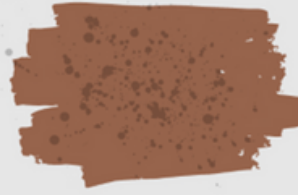
Fiebing's Antique Finish Colour Reference Chart



21980
BLACK



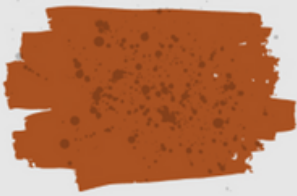
21980
DARK BROWN



21980
MEDIUM BROWN



21980
LIGHT BROWN



21980
CORDOVAN



21980
BRITISH TAN



21980
MAHOGANY



21980
SHERIDAN BROWN



21980
NEUTRAL

Fiebing's Antique Paste—designed to work on vegetable tanned leather to give a more layered depth of finish, and to highlight and contrast tooled, carved and stamped areas.

Firm buffing will bring up the wax to seal the colours and give a soft gloss finish.

Finishes—DucksWax, Carnauba Cream

Colours depicted are for reference only and may vary depending on the leather type and finish they are applied to. Testing on a scrap piece or unseen area is always recommended before starting a big project.

HOW TO DYE LEATHER



Create a clean area, lay down a protective cover for your work surface. have handy paper towels, a bowl of water and some saucers for your dyes.

PS - don't forget your gloves!

STEP 2 - POUR OUT

Shake the bottle well and pour out in a shallow container or saucer.



STEP 4 - APPLY

Dip your applicator in to the dye and wipe over any excess on the rim of the saucer (to avoid drips falling on to your leather). Apply quickly using a circular motion.

STEP 3 - TEST PIECE

Practice first with different applicators until you find one you like. Try a dauber, sponge or a soft lint free cloth.



LEAVE TO DRY TO SEE THE TRUE COLOUR

The dampness from the dye will initially make the colour appear darker.

STEP 5 - SECOND COAT

Add a second coat to give the leather a more uniform dye colour. You use a lot less dye for this stage as some of the dye will sit on the top of the leather.

To avoid streaks wipe over with a damp paper towel.

STEP 6 - BUFF AND FINISH

Once the leather is totally dry vigourously buff and rub down with a soft lint free cloth. This will remove any remaining residue and help to make the leather colourfast.

Add a finish of your choice.

guide to

RE-DYEING LEATHER ITEMS

before

Re-colouring leather items can be a great way to restore and update leather items but it is wise to check out the leather type and finish first.

ALWAYS test on a small discreet area before embarking on the whole project.

preparation

Wipe the leather with a damp cloth and mild detergent.

A deglazer can be used to remove any surface finish and grease and allow the dye to get to the leather grain.

Alternatively don't use deglazer, leave the surface finish intact and just remove any grease

leather dye

For best results use Fiebing's Pro Dye, these give good intensity of colour.

Wearing gloves, apply with a sponge in light layers until the desired colour is reached.

As a general rule it is easiest to go to a darker shade.

finish

Once the dye is dry take a clean lint free cloth and give the leather a good buff to remove any surface residue.

Apply a finish to seal and protect the leather.

There are a range of finishes on our website.

Identity Leathercraft started life as The Identity Store, founded by Peter and Jackie Laight in 2002 to help people express their identity through the things they make from leather.

The company has grown and with it our collective experience and knowledge of the properties and methods for making and using leather as a craft material. So whatever you would like to make, repair, restore or invent out of leather this is the store for you.

As well as on line you can find us at shows and events around the country, including leather sales and open days at our premises in Matlock, the gateway to the Peak District.

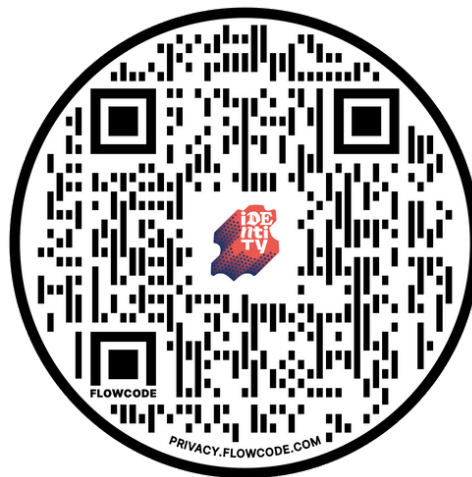
Details of events, workshops, leather sales and open days can be found on the News page of our website, and on our social media. To keep in touch with shows and events you can also subscribe to our newsletter.

How to Order

www.identityleathercraft.com

sales@theidentitystore.co.uk

Phone 01629 581403



www.identityleathercraft.com



The Identity Store Ltd
Holt Lane Matlock DE4 3LY
Telephone 01629 581403
Email sales@theidentitystore.co.uk