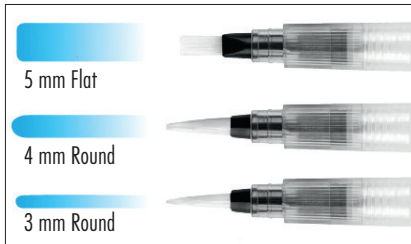
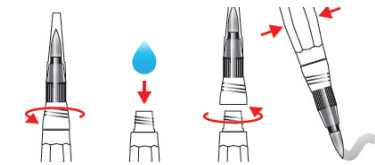


FLUID ARTS BRUSH SET

Use these convenient fillable brushes on the go or in the studio, wherever you create. They're versatile and great for any type of art - painting, sketching, stamping, mixed media and more. Simply unscrew and fill with water, isopropyl alcohol, ink, watercolor or whatever fluid art medium you desire. Set of three brushes - 3 mm round, 4 mm round and 5mm flat. Durable nylon tips that retain their shape. Soft, easy-to-squeeze, .35" diameter, 7.35" long barrel with 10 ml reservoir and an anti-roll shape.



TIP Unscrew the brush and close again after filling. Place light Gently squeeze the barrel to start the flow.



TIPS & TECHNIQUES

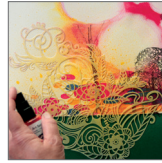
SPRAYING & LAYERING COLORS

Create interesting backgrounds by randomly spritzing and dripping Art Spray colors together or by spraying through stencils. Blot wet colors with towel to lighten the shade. Permanent when dry, colors can be layered and worked over without reactivating.



STENCILING

Select a stencil and place it on the background. Spray with the desired Art Spray colors. To prevent unwanted color stains, wipe the excess paint from the stencil before lifting the stencil from the surface. Alternatively, carefully lift the stencil and press onto a different background to create a negative image for subsequent creations.



MASKING

Before spraying with Art Spray, cover desired areas with paper, cardboard cut-outs, or strips of painters tape to block color in the foreground or create background patterns.



BLENDING & SMUDGING

Apply different colors of Art Crayons in layers as stripes, squares, circles or other shapes and then blend together with fingers, cloth or other blending tool. For thicker applications, a rubber tool or glove works best.



WATERCOLOR EFFECTS

Apply Art Crayons and spray with a fine mist of water. Smudge the dissolved colors with a brush, sponge or cloth. Use more water and tilt the picture to create a droplet effect. Spray on more water if required. Alternatively, apply a fine mist of water before painting and draw on the wet background.



MIXED MEDIA



Marabu Creative Colours

2460-A Remount Road | North Charleston, SC 29406

Phone: (888) 253-2778 | marabucreativeusa.com

creative@marabu.com



#madewithmarabu



06/2020

ARTISTIC CREATIVITY IS NOT GOVERNED BY RULES!

Marabu's mixed media products and tools are an invitation to experiment and discover.



ART CRAYON

A buttery-smooth, versatile, wax-based soft pastel medium in a sturdy, fully-loaded retractable holder with an ergonomic grip and a clear protective cap. Suitable for a variety of fine art and mixed media work. Works well on raw or primed surfaces such as paper, canvas, fabric or wood. Create rich, textural solids at 100%, blend and stamp colors for beautiful backgrounds, or brush with water for transparent effects or reductive techniques like wipe stenciling.

220 Sunshine Yellow		057 Gentian		029 Rosé Beige	
013 Orange		141 Sky Blue		295 Cocoa	
123 Chilli		297 Aqua Green		278 Light Grey	
031 Cherry Red		098 Turquoise		070 White	
124 Pomegranate		155 Kiwi		073 Black	
005 Raspberry		158 Apple		084 Gold	
033 Rose Pink		041 Khaki		082 Silver	
007 Lavender		008 Terracotta		864 Blender	
037 Plum		294 Caramel			

Number of Colors Available	25 + Blender
Most Permanent Workable Surfaces	Paper, gesso, wood, dry acrylic mediums and grounds, plaster, bisque-fired clay and most absorbent or semi-absorbent surfaces
Least Permanent Workable Surfaces	Glass, metal, ceramic glaze or other nonabsorbent surfaces. Not suitable for fabric that will be washed
Techniques	Mixed media, stenciling, monoprinting, stamping, transfer, watercolor/wet into wet, thick application smudging/blending, subtractive with a damp cloth and sgraffito
FAQs	Artist quality • Coverage 164-229 linear ft. • Blends similarly to a high quality, soft oil pastel • Lightfast, highly-pigmented, and water-soluble • Cleans up with soap and water • Recommended for 6 years and over • Reworkable longest on surfaces such as gesso (up to 3-6 hours after application) • Sets up faster on absorbent surfaces such as paper • Use with acrylic paints, gels and mediums, sprays, watercolor, pastels, and other dry media • Can be used on walls • Wipe-resistant after 24 hours; not washable • Apply a light spray fixative for semi-permanence • Recommend the application of a water-based UV-protectant varnish on high-traffic areas • Use synthetic or synthetic/natural fiber blend brushes



ART SPRAY

An artist-quality, low-viscosity, non-aerosol acrylic spray paint for use on many different porous/semi-porous surfaces. Also works well on minimally absorbent surfaces. The vivid colors are blendable and do not reactivate once dry, allowing for multiple layers of color and texture in mixed media applications. Spray directly in bursts, blend with a damp brush or sponge, paint as you would with watercolors, or even use a dip pen for lettering. Shake vigorously for 60 seconds before use.

020 Lemon		039 Aubergine		158 Apple	
220 Sunshine Yellow		007 Lavender		061 Reseda	
225 Tangerine		037 Plum		041 Khaki	
023 Red Orange		057 Gentian		295 Cocoa	
212 Flamingo		141 Sky Blue		078 Grey	
123 Chilli		091 Caribbean		073 Black	
031 Cherry Red		092 Petrol		082 Silver	
034 Bordeaux		153 Mint		084 Gold	
005 Raspberry		255 Aquamarine			

Number of Colors Available	24 + 2 Metallics
Most Permanent Workable Surfaces	Paper, gesso, leather, wood, acrylic mediums and grounds, plaster, bisque fired clay and most absorbent or semi absorbent surfaces such as vinyl, polypropylene and polyester
Least Permanent Workable Surfaces	Glass, metal, ceramic glaze or other nonabsorbent surfaces
Techniques	Mixed media, spraying, layering, watercolor, stenciling, monoprinting
FAQs	Lightfast and highly-pigmented • Test before use • Cosmetic-grade spray nozzle for a fine mist • Spray at a 45 degree angle altering distance from the surface to vary the look • Transparency varies • Re-workable when wet, permanent when dry • Ensure surface is clean with no water repellent or UV coating • When working on leather or synthetic leather, remove any coating with a light solvent • Coverage 7.5' linear ft. • Spritz wet color with water or alcohol to create interesting textures • Sprinkle salt on wet color for a marbled effect • Use with acrylics, gels, and mediums; aerosol sprays, markers, watercolor, pastels, and other dry media • Works over wax for cold encaustic techniques • Can be used on walls • Application of a water-based UV protectant varnish is recommended on high-traffic areas • Between uses, turn the bottle upside down and pump the spray to empty and clear excess paint • Wipe nozzle clean with a damp cloth • If the spray becomes blocked, remove pump and rinse well • Nozzle can be cleaned by carefully inserting a pin into the sprayer • Use synthetic or synthetic/natural fiber blend brushes



Green Jungle



Blue Ocean



Lovely Red



Essential



Primary

