

INSTRUCTIONS FOR THE CAMPAIGN BOX™

Mount blocks and hardware can be found inside the main compartment of the box.



Tripod Mount Blocks



Hardware

MOUNTING ON A TRIPOD

Remove the wing nuts and washers from the bolts. There are four holes on the back of the box. Insert the bolts with the head on the inside of the box.



There are two ways to put the mount blocks on which affect the way the box sits on the tripod.

LEVEL BOX

Attach the mount blocks with the wide part of block at the top



ANGLED BOX

Attach the mount blocks with the narrow part of block at the top



After installing the hardware, hook the mount blocks onto the tripod legs. Mount blocks can be moved in or out to adjust the Campaign Box's height on the tripod.

Adjusted in



Adjusted out



Mount blocks can either be tightened or left looser for use and can remain on the box after use.

FEATURES

For more effective brush support open the slide out panels slightly and put the brush handles inside.



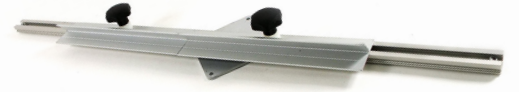
Extra main compartment dividers are available.



INSTRUCTIONS FOR THE NO 17 FLEX EASEL™



Loosen the knobs and fold out the top and bottom shelf.



Attach the tripod quick release plate to the back of the easel.

Connect the quick release plate to the tripod. For the most versatility of positioning, have the tripod head adjustment handle pointing up.



The Flex Easel™ can be adjusted to any angle from flat to past vertical.



Can be used for watercolor.



ACCESSORIES FOR THE CAMPAIGN BOX™

104.16PAL
Palette for the Campaign Box™



236.12
9x12 Covered Palette Tray



210JR
Mighty Mite Jr™
Brush Washer



217SV2
10 oz Brush Washer



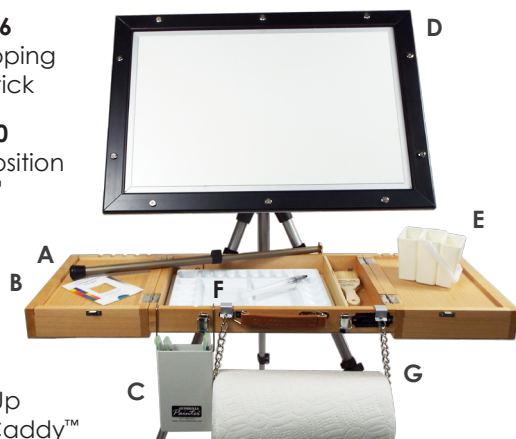
700FR
Medium Handle
Brush Set - Filbert



A - 2496
Telescoping
Mahl Stick

B - 2250
Composition
Finder™

C - 123
Hang-Up
Brush Caddy™



D - 190HALF
Half Sheet
Watercolorboard™

E - 214
Tri-Brush
Washer

F - 235.12
9x12 Covered
Watercolor
Palette

G - 125
Paper Tower
Holder



H - 3001
Nº 17 Flex
Easel™

J - 124.12
Foam Lined
Pastel Trays

I - 305K
Field Tripod Kit

K - 127
Handy Hook