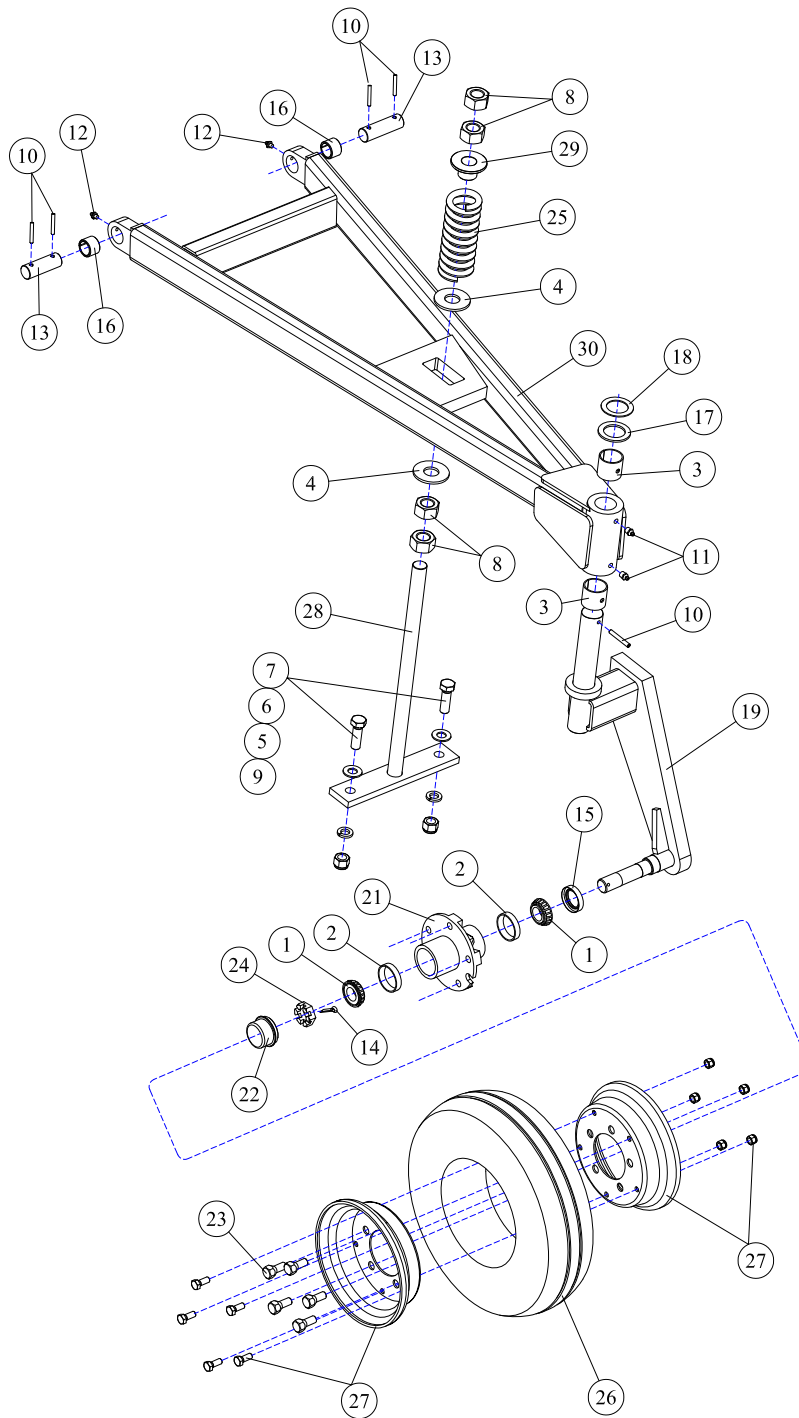


Rear Rotary Caster Assembly



REF#	PARTS DESCRIPTION	REQ	PART #
1	CONE BEARING	2	10-0016
2	BEARING CUP	2	10-0017
3	GARLOCK BUSHING (Not available on all models)	2	10-0033
4	1" FLAT WASHER GR 5	2	11-0001
5	5/8 LOCK WASHER GR 5	2	11-0004
6	5/8 FLAT WASHER GR 5	2	11-0025
7	5/8 X 2-1/4 NC HEX CAPSCREW	2	11-0631
8	1 NC HEX NUT	4	11-1007
9	5/8 NC NYLOCK NUT	2	11-1025
10	1/4 X 2 ROLL PIN	5	11-2005
11	1/8 GREASE ZERK	2	23-0003
12	1/4 GREASE ZERK	2	23-0004
13	CLEVIS PIN	2	27-0004
14	3/16 X 2 COTTER PIN	1	27-1001
15	SEAL	1	33-0014
16	HARDENED BUSHING	2	34-0005

REF#	PARTS DESCRIPTION	REQ	PART #
17	10GA MACHINE BUSHING	1	34-0057
18	14GA MACHINE BUSHING	1	34-0058
19	CASTER SPINDLE	1	35-0001
*20	HUB ASSEMBLY COMPLETE	1	35-0002
21	HUB	1	35-0003
22	DUST CAP	1	35-0004
23	HUB STUD	5	35-0005
24	1" CASTLE NUT	1	35-0006
25	SPRING	1	36-0001
26	TIRE	1	38-0001
27	RIM COMPLETE (2 SECTIONS & HARDWARE)	1	38-0002
28	ADJUSTMENT ROD	1	41-0002
29	TUBE PROTECTOR	1	41-0016
30	CASTER WHEEL FRAME	1	41-0035
* #20 Hub assembly complete includes #1,2,14,15,21-23			