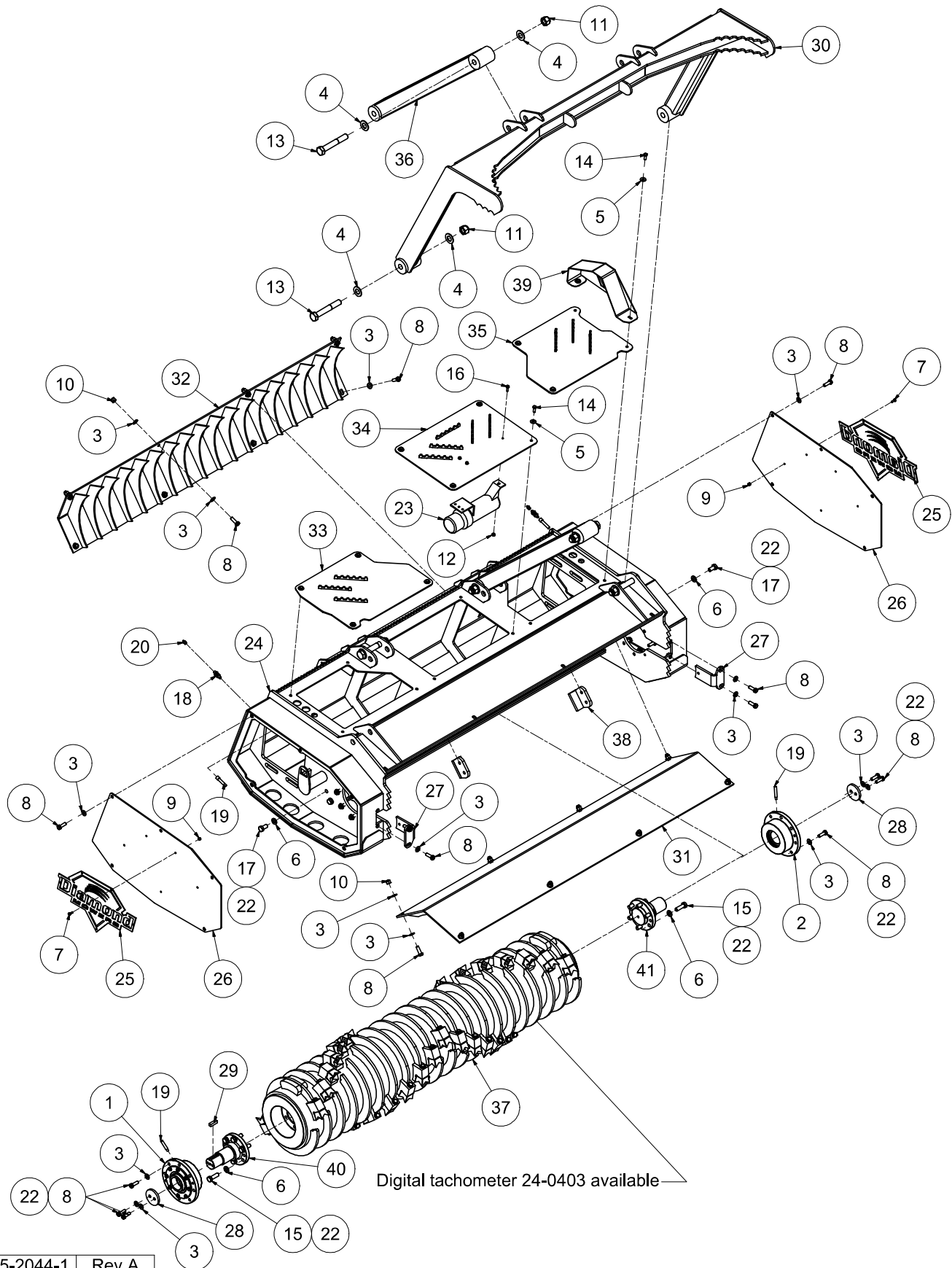


CUTTER ASSEMBLIES

DECK ASSEMBLY



25-2044-1 Rev A

CUTTER ASSEMBLIES

DECK ASSEMBLY

REF#	PARTS DESCRIPTION	REQ	PART#	TORQUE (ft-lbs)
1	BEARING ASSEMBLY, DRUM MULCHER, FIXED (DRIVE)	1	10-1092	
2	BEARING ASSEMBLY, DRUM MULCHER, FLOATING (IDLER)	1	10-1093	
3	1/2 X 1.062 GR 8 SAE FLAT WASHER, YELLOW ZINC	60	11-0042	
4	1 X 2 GR 8 SAE FLAT WASHER, YELLOW ZINC	12	11-0056	
5	3/8 THRU-HARDENED FLAT WASHER, YELLOW ZINC	14	11-0092	
6	M16 THRU-HARDENED FLAT WASHER, ECOGUARD	16	11-0102	
7	1/4-20 X 3/4 GR 5 HEX CAP, ZINC	10	11-0588	8.4
8	1/2-13 X 1-1/2 GR 8 HEX CAP SCREW, YELLOW ZINC	48	11-0972	106
9	1/4-20 GR 5 NYLOCK NUT, ZINC	10	11-1022	
10	1/2-13 GR 8 NYLOCK NUT, ZINC	12	11-1072	
11	1 NC NYLOCK NUT, GR 8	6	11-1082	
12	1/4-20 GR 5 NYLOCK FLANGE NUT, ZINC	3	11-1090	
13	1-8 X 6-1/2 GR 8 HEX CAP, YELLOW ZINC	6	11-1622	909
14	3/8-16 X 1 GR 8 HEX CAP, YELLOW ZINC	12	11-1624	44
15	5/8-11 X 2 GR 8 HEX CAPSCREW, YELLOW ZINC	12	11-1672	240
16	1/4-20 X 1 GR 5 HEX FLANGE BOLT, ZINC	3	11-2210	8.5
17	5/8-11 X 1-1/4 GR 8 HEX CAPSCREW	4	11-2268	212
18	BULKHEAD, 1/8 MP X 1/4 MJIC	2	21-1687	
19	GREASE HOSE, 1/8" X 24" (1/8MP X 1/4 FJIC)	2	21-4840	
20	GREASE ZERK 1/8" FEM. NPT	2	23-0008	
21	#2 LITHIUM GREASE (NOT SHOWN)	1	23-0015	
22	LOCTITE 262, .017 OZ (RED)	1	24-0382	
23	LARGE MANUAL CANISTER, 12" X 3.25"	1	24-0397	
24	SHELL, FDS072	1	25-0370	
25	DIAMOND LOGO CUTOUT	2	31-0670	
26	BELT COVER, FDS	2	31-0921	
27	SLOT COVER, FDS	2	31-1080	
28	RETENTION PLATE, INNER RING, FDS	2	31-1084	
29	KEY 1/2 X 1/2 X 1-3/4	1	37-0022	
30	PUSH BAR	1	41-1601	
31	UPPER LINER	1	41-1602	
32	LOWER LINER	1	41-1603	
33	RIGHT TOP GRIPPER COVER, FDS072	1	41-1771	
34	CENTER TOP GRIPPER COVER, FDS072	1	41-1772	
35	LEFT TOP GRIPPER COVER, FDS072	1	41-1773	
36	PUSH BAR BRACE TUBE, FDS	2	41-1997	
37	DRUM WELDMENT, FDS072, GEN II BEARING	1	41-2229	
38	FDS SHEAR PLATE, GEN II BEARING	2	41-2231	
39	HOSE GUARD, FDS/ODS	1	41-2236	
40	DRUM SHAFT, DRIVE SIDE, GEN II	1	90-7107	
41	DRUM SHAFT, IDLER SIDE, GEN II	1	90-7108	

25-2044-1 | Rev A