



SERVICE BULLETIN

GROUND ROLLER BEARING

• OIL BATH STYLE REPLACEMENT • DOC#15-1140 •

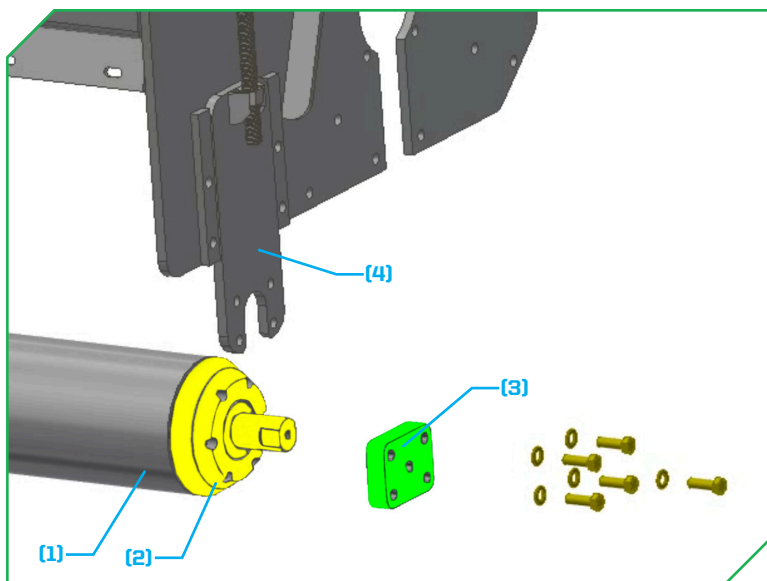
DIAMOND MOWERS, LLC
350 E 60th St. North
Sioux Falls, SD 57104

FOR WARRANTY CALL DIAMOND MOWERS DIRECT:
888-960-0364
OUR TECHNICIANS WILL DIAGNOSE YOUR SITUATION
OVER THE PHONE TO GET YOU UP AND RUNNING QUICKLY.

Phone: 605-977-3300
Fax: 605-655-5870
www.diamondmowers.com

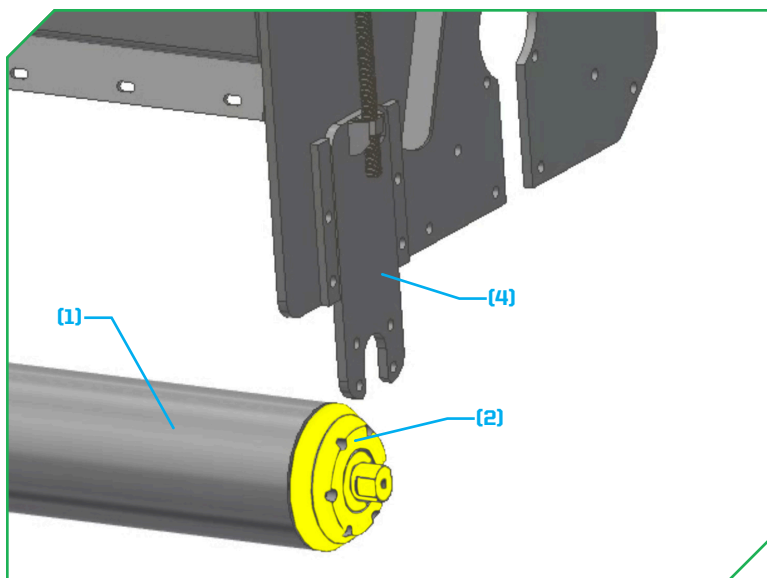
DEMAND BRILLIANCE.

© DIAMOND MOWERS, LLC

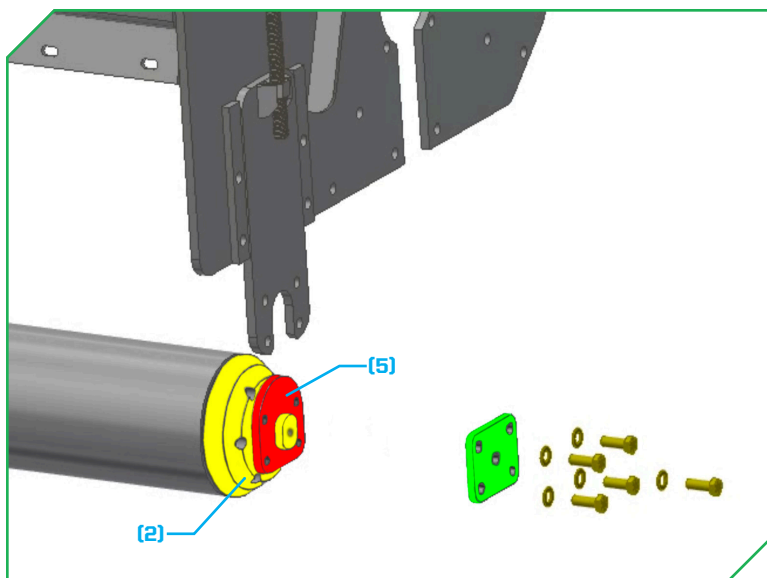


REPLACING THE ORIGINAL OIL BATH BEARINGS WITH THE REPLACEMENT OIL BATH BEARINGS

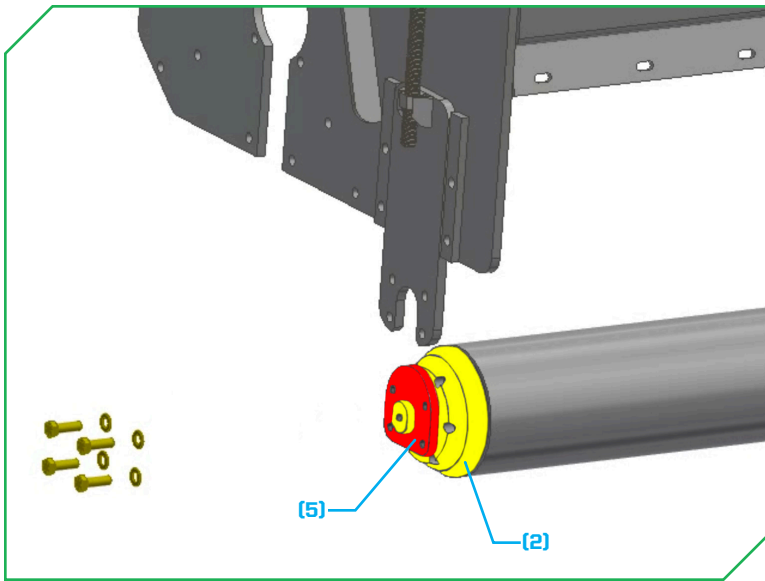
- Rest the flail ground roller (1) on the ground, and remove the bearing retaining blocks (3) securing the ground roller (1) to the cutting height adjustment plates (4).
- Lift the flail assembly up and off of the ground roller (1).
- Unbolt and remove the original ground roller bearings (2) from the ground roller tube (1) for both sides.



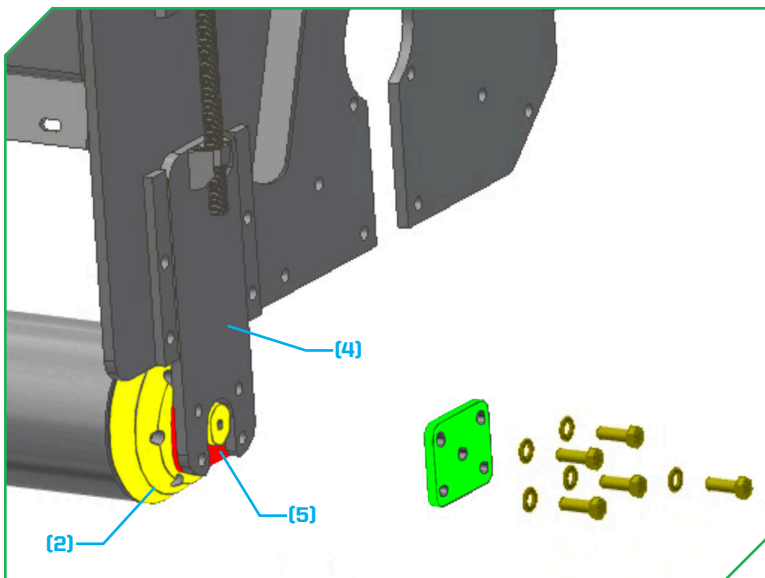
- Bolt the replacement ground roller bearings (2) into the ground roller tube (1) and torque the hardware to 51ft-lbs (69Nm).
- Drill out the (4) mounting holes on each cutting height adjustment plate (4) to 1/2" pass thru.



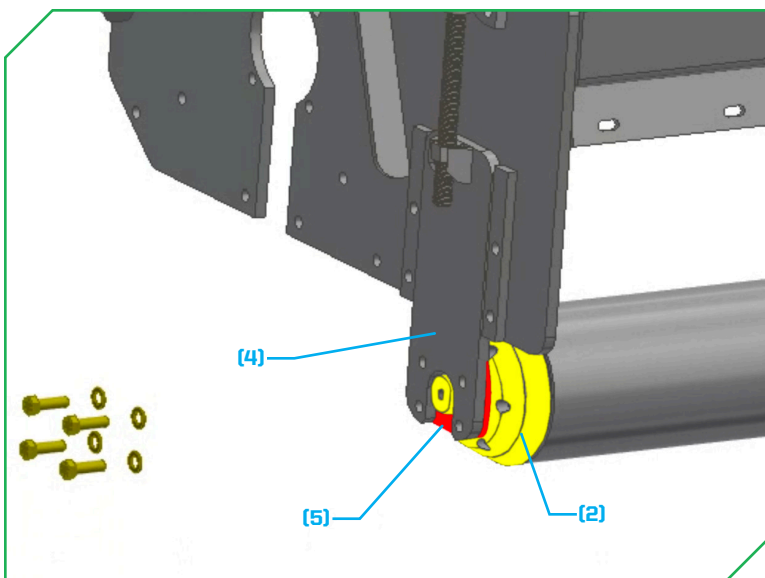
- Slide the retaining plate (5) onto the bearing shaft (2) in the orientation illustrated for the drive belt side of the flail.

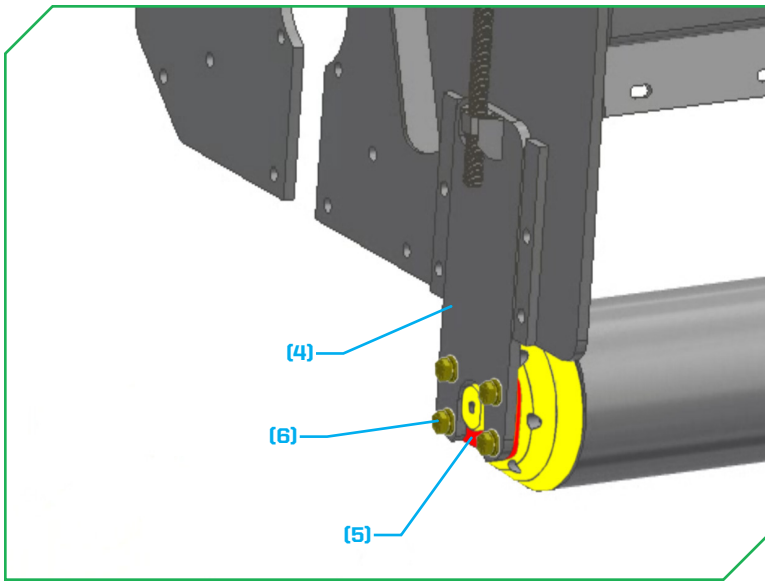


- Slide the retaining plate (5) onto the bearing shaft (2) in the orientation illustrated for the non-drive belt side of the flail.

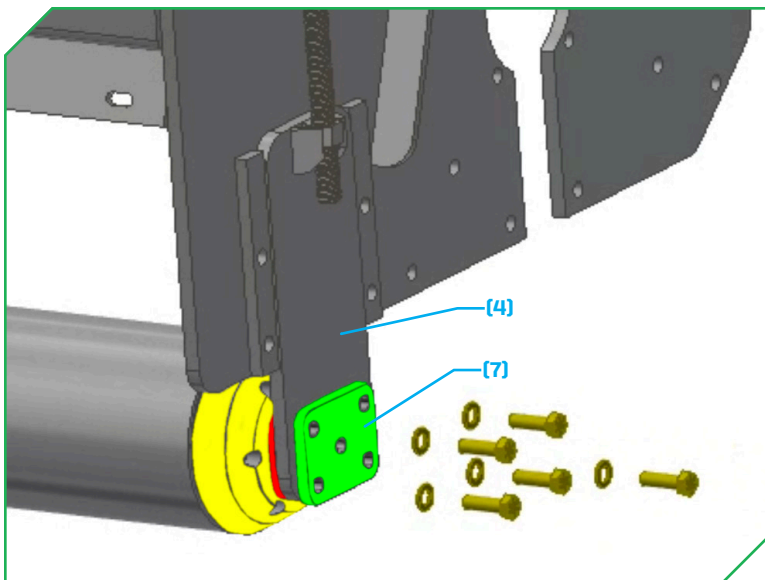


- Lower the flail unit until the ground roller bearing shafts (2) on both sides are fully seated into the notches on the cutting height adjustment plates (4).
 - The retaining plates (5) should be to the inside of the adjustment plates (4).

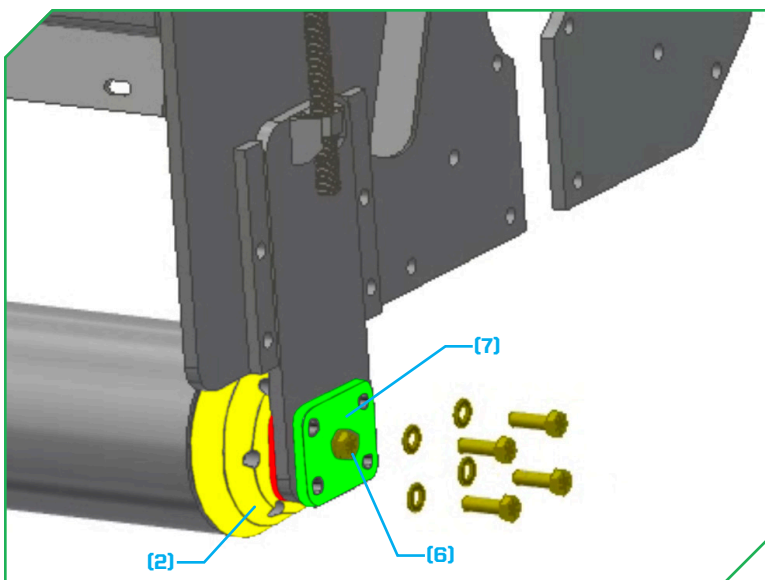




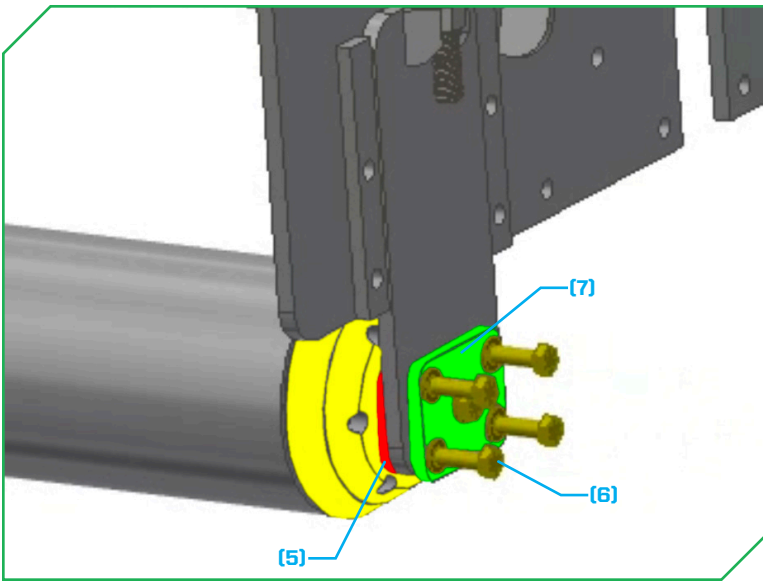
- Secure the non-drive belt side retaining plate⁽⁵⁾ to its adjacent adjustment plate⁽⁴⁾ with the supplied hardware⁽⁶⁾.
 - Use Loctite 262 with primer 7649 on the bolt threads, and torque the hardware to 75ft-lbs (102Nm).



- Place the mounting plate⁽⁷⁾ over the mounting holes of the cutting height adjustment plate⁽⁴⁾ on the drive belt side of the flail

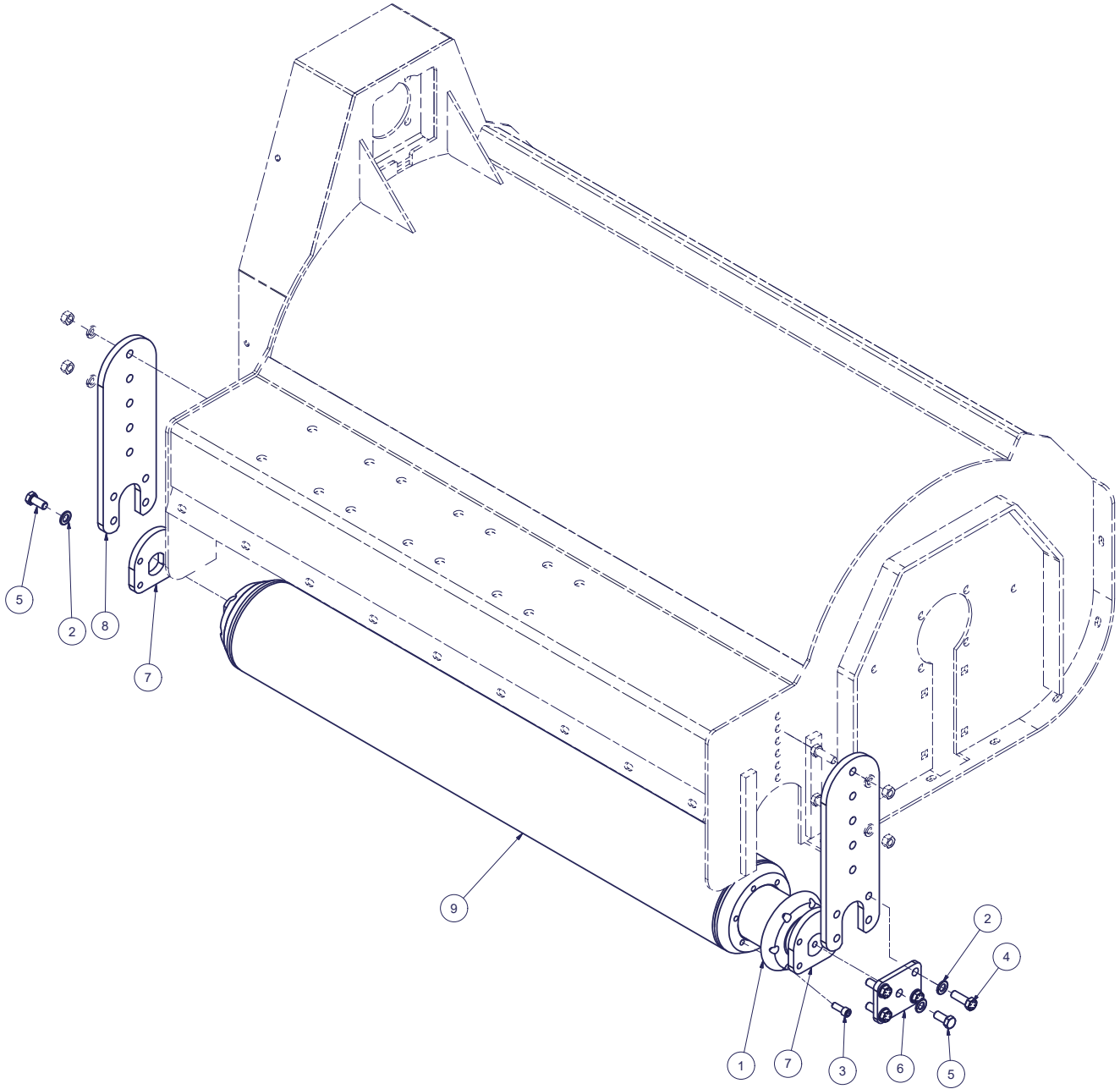


- Secure the ground roller bearing shaft⁽²⁾ on the drive belt side of the flail to the mounting plate⁽⁷⁾ with the supplied hardware⁽⁶⁾.
 - Use Loctite 243 on the bolt threads, and torque the hardware to 75ft-lbs (102Nm).

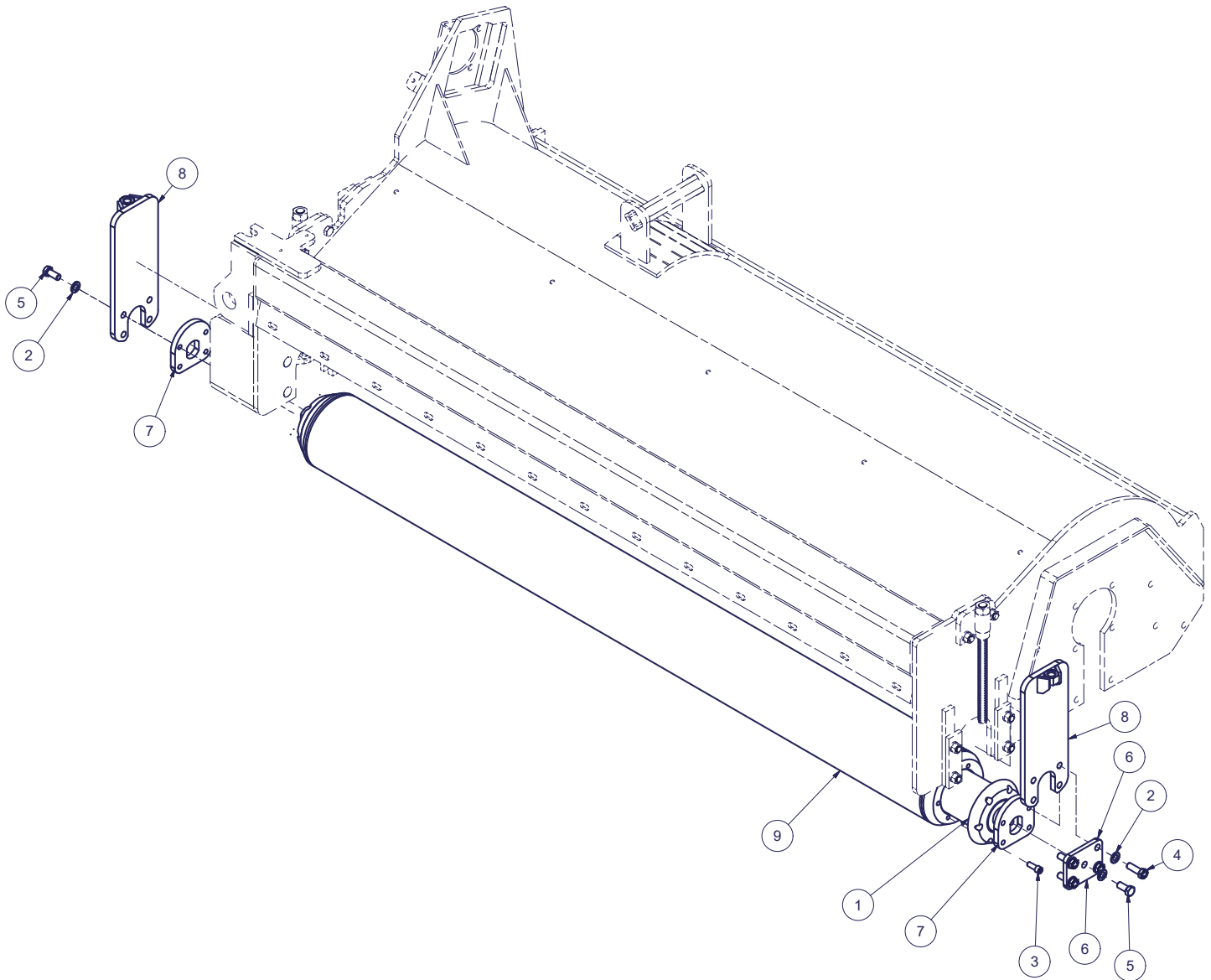


- Secure the retaining plate⁽⁷⁾ to the mounting plate⁽⁵⁾ with the supplied hardware⁽⁶⁾ on the drive belt side of the flail.
 - Use Loctite 262 with primer 7649 on the bolt threads, and torque the hardware to 75ft-lbs (102Nm).

FLAIL HEAD - BOOM MOUNT



REF#	PART#	PARTS DESCRIPTION	REQ
1	10-1067	OIL BATH REPLACEMENT	2
2	11-0042	1/2 SAE FLAT WASHER GR 8	9
3	11-0752	3/8 X 1 H.S. NC SKT HEAD	12
4	11-0972	1/2 X 1-1/2 NC HEX CAP, GR 8	4
5	11-2154	NC HEX CAP 0.5 X 1.125 GRD 8	5
6	31-0755	GROUND ROLLER MOUNT PLATE	1
7	31-0761	GROUND ROLLER BOLT PLATE INTERIM	2
8	31-0769	GROUND ROLLER BRKT PLATE	2
9	46-0053	50" GROUND ROLLER	1

FLAIL HEAD - SIDE, REAR, & FRONT MOUNT

REF#	PART#	PARTS DESCRIPTION	REQ
1	10-1067	OIL BATH REPLACEMENT BEARING	2
2	11-0042	1/2 SAE FLAT WASHER GR 8	9
3	11-0752	3/8 X 1 H.S. NC SKT HEAD	12
4	11-0972	1/2 X 1-1/2 NC HEX CAP, GR 8	4
5	11-2154	NC HEX CAP 0.5 X 1.125 GRD 8	5
6	31-0755	GROUND ROLLER MOUNT PLATE	1
7	31-0761	GROUND ROLLER BOLT PLATE INTERIM	2
8	41-1774	GROUND ROLLER BRKT W-O TAPPED HOLES	2
9	46-0051	WLDT 75" GROUND ROLLER	1