

HL PISTON MOTOR REAR SEAL REPLACEMENT

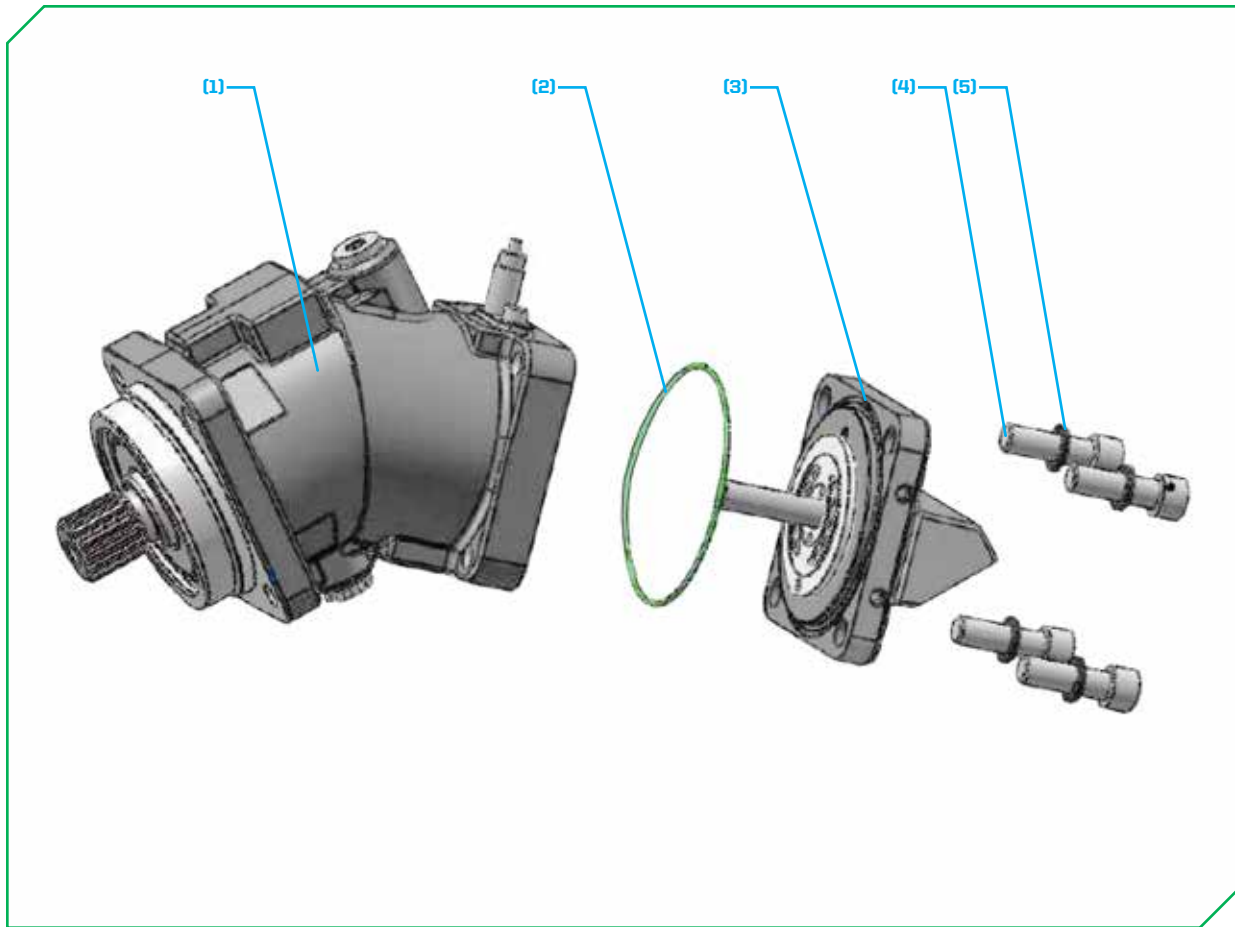
DOC #15-2074

WARRANTY + SERVICE 888.960.0364
PARTS 888.960.0361



DIAMONDMOWERS.COM

PISTON MOTOR REAR SEAL REPLACEMENT



Reference the exploded diagram above when using the instructions below for replacing the rear seal on a piston motor:

- Remove the (4) socket screws⁽⁴⁾ with the (4) nordlock washers⁽⁵⁾ retaining the rear cap⁽³⁾ to the piston motor housing⁽¹⁾.
 - **NOTE:** One or more of the socket screws⁽⁴⁾ may be filled with lead; use a punch or similar to knock the lead plug out of the socket screws⁽⁴⁾. Removing the lead from the socket screws⁽⁴⁾ will **VOID** the motor warranty.
 - Retain the (4) socket screws⁽⁴⁾ for reuse, but discard the (4) used nordlock washers⁽⁵⁾.
- Remove the rear cap⁽³⁾ from the piston motor housing⁽¹⁾, using care not to dislodge or move the internal components.
 - **NOTE:** The rear cap⁽³⁾ **MUST** be reassembled in the **EXACT** same orientation it was originally in.
 - **NOTE:** Removing the rear cap⁽³⁾ is best done with the piston motor housing⁽¹⁾ in a vertical position.
- Remove the old O-Ring⁽²⁾ from the rear cap⁽³⁾.
 - Discard the used O-Ring⁽²⁾.
- Place the new O-Ring⁽²⁾ into its groove on the rear cap⁽³⁾.
 - Use some grease placed into the groove on the rear cap⁽³⁾ to assist retaining the O-Ring⁽²⁾ in place.
 - The new O-Ring⁽²⁾ is supplied in Diamond kit #14-1244.
- Replace the rear cap⁽³⁾ onto the piston motor housing⁽¹⁾, using care not to dislodge or move the internal components.
 - **NOTE:** The rear cap⁽³⁾ **MUST** be reassembled in the **EXACT** same orientation it was originally in.
 - **NOTE:** Replacing the rear cap⁽³⁾ is best done with the piston motor housing⁽¹⁾ in a vertical position.
- Replace the (4) socket screws⁽⁴⁾ with the (4) new nordlock washers⁽⁵⁾ securing the rear cap⁽³⁾ to the piston motor housing⁽¹⁾.
 - The new nordlock washers⁽⁵⁾ are supplied in Diamond kit #14-1244.
- Torque the (4) socket screws⁽⁴⁾ in a criss-cross pattern to the manufacturer's specs @ 74ft-lbs (100Nm).