

INSTALLATION INSTRUCTIONS

DISC MULCHER / DRUM MULCHER PISTON MOTOR SHAFT SEAL

DOC #15-2034

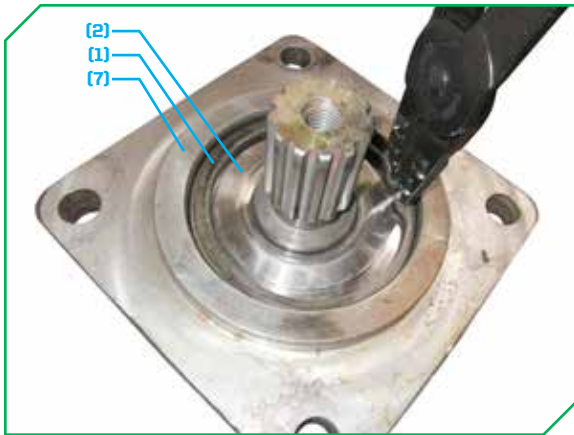
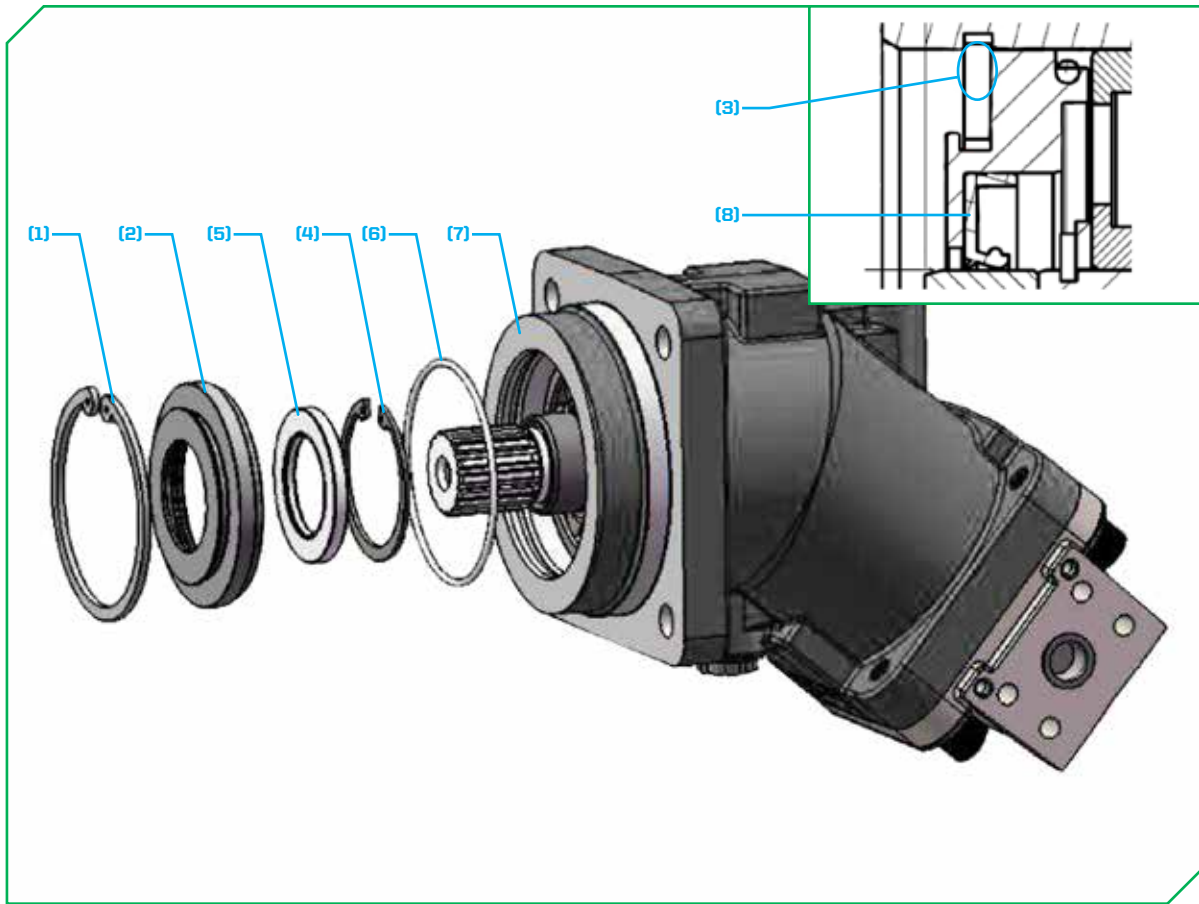
WARRANTY + SERVICE 888.960.0364

PARTS 888.960.0361



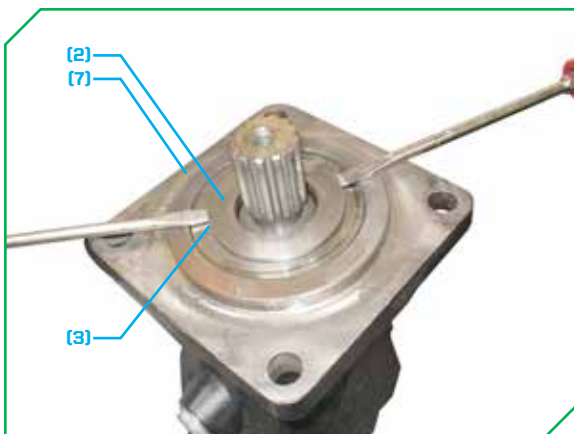
DIAMONDMOWERS.COM

PISTON MOTOR SHAFT SEAL REPLACEMENT



Reference the exploded diagram above when following the instructions below for replacing the shaft seals on a piston motor:

- Remove the large spring retainer ring (1) from the piston motor housing (7).



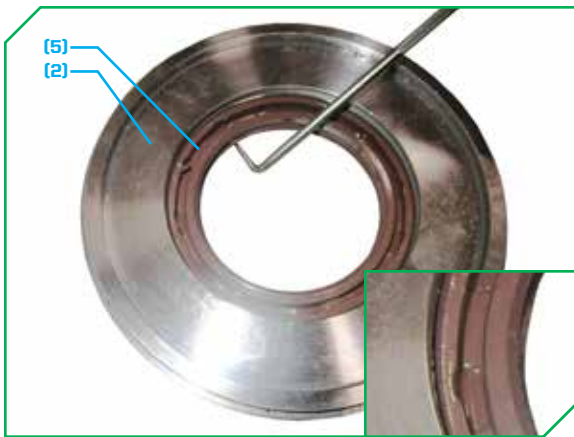
- Remove the seal holder (2) from the piston motor housing (7).
 - Use (2) levers or screwdrivers inside the groove (3) to assist in removal.
 - **NOTE:** Lift up the seal holder (2) from the piston motor housing (7) **EVENLY** and **LEVEL** with the (2) levers or screwdrivers.
 - Use caution; **DO NOT** damage the piston motor housing (7)!
 - **NOTE:** If your motor has a keyed shaft, remove the keyed shaft **FIRST**.
 - **NOTE:** Motor seal (5) is installed on back side of seal holder (2).

CONTINUED ON NEXT PAGE

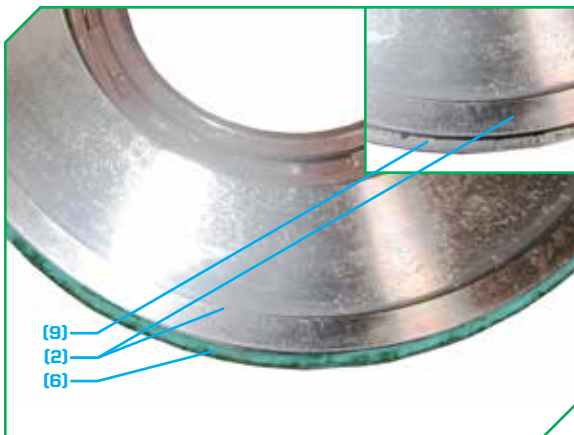
PISTON MOTOR SHAFT SEAL REPLACEMENT



- Remove the small spring retainer ring (4) on the back side of the seal holder (2).



- Carefully note the orientation (8) of the motor seal (5) in the seal holder (2) and the diagram on the previous page. The replacement motor seal (5) must be orientated (8) **EXACTLY** identical to the old motor seal (5).
- Replace the motor seal (5) on the back side of the seal holder (2).
 - Apply hydraulic oil to the motor seal (5) before assembly.
 - **NOTE:** Confirm the motor seal (5) is orientated (8) and **FULLY** seated on the seal holder (2) **EXACTLY** as demonstrated in the illustration inset at left.



- Reinstall the small spring retainer ring (4) on the back side of the seal holder (2) to keep the motor seal (5) in place.
 - **NOTE:** Confirm the small spring retainer ring (4) is **FULLY** seated into its groove on back side of the seal holder (2).
- Place the replacement O-ring (6) into its groove (9) on the outer edge / back side of the seal holder (2).
 - Apply hydraulic oil to the O-ring (6) before assembly.
 - **NOTE:** Confirm the O-ring (6) is **FULLY** seated into its groove (9) on the outer edge / back side of the seal holder (2) as illustrated at left.



- Remove the old O-ring (6) from the piston motor housing (7).
 - Use caution; **DO NOT** damage the piston motor housing (7)!
- Reinstall the seal holder (2) into the piston motor housing (7).
 - **NOTE:** Lower the seal holder (2) into the piston motor housing (7) **EVENLY** and **LEVEL**.
 - Use caution; **DO NOT** dislodge or damage the motor seal (5), O-ring (6), or piston motor housing (7)!
- Reinstall the large spring retainer ring (1) into the piston motor housing (7).
 - Confirm the large spring retainer ring (1) is fully seated into its groove in the piston motor housing (7).