



INSTALLATION INSTRUCTIONS

TOOTH HOLDER REPLACEMENT

• *WELD-FREE DISC* • *DOC#15-1093* •

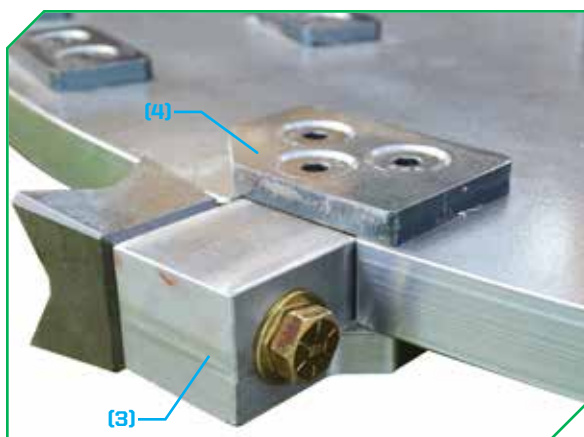
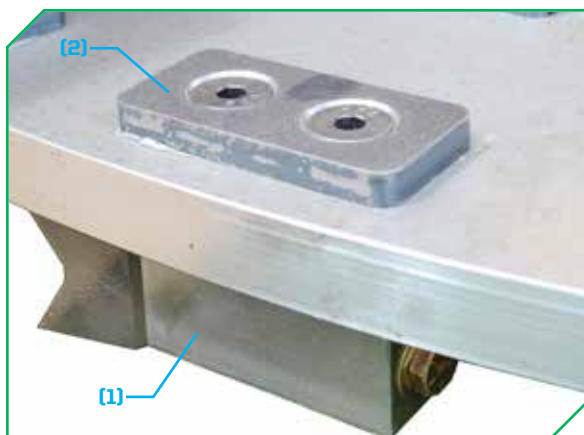
DIAMOND MOWERS, LLC
350 E 60th St. North
Sioux Falls, SD 57104

FOR WARRANTY CALL DIAMOND MOWERS DIRECT:
888-960-0364
OUR TECHNICIANS WILL DIAGNOSE YOUR SITUATION
OVER THE PHONE TO GET YOU UP AND RUNNING QUICKLY.

Phone: 605-977-3300
Fax: 605-655-5870
www.diamondmowers.com

DEMAND BRILLIANCE.

© DIAMOND MOWERS, LLC



REMOVING/REPLACING A TOOTH HOLDER

- Removing a tooth holder:
 - Apply localized heat to one side of the inner tooth holder (1) where it contacts the disc, or to the non-bolt (3) side of the outer tooth holder (3) for 1-2 minutes with a hand torch.
 - With the assembly still hot, use a breaker-bar to free the bolts (5). Remove them with an impact wrench and discard.
 - Remove the retaining plate (2)(4) and discard.
- Replacing a tooth holder:
 - Clean all surfaces where the tooth holder contacts the disc, as well as all threaded surfaces (bolts, bolt holes) of any debris, oil, etc.
 - Apply Loctite 277 to the tooth holder (1)(2) bolt hole threads, covering 3-4 threads.
 - Apply Loctite 277 to the bolts (5) threads all the way around, covering 3-4 threads.
 - Assemble the tooth holder (1)(3), retaining plate (2)(4), and bolts (5).
 - Torque the bolts (5) to 110ft/lbs (149Nm).
 - **NOTE:** Loctite 277 requires a full 24hr cure for full strength.

For questions, contact Diamond Mowers' Customer Service Department at 888-960-0364