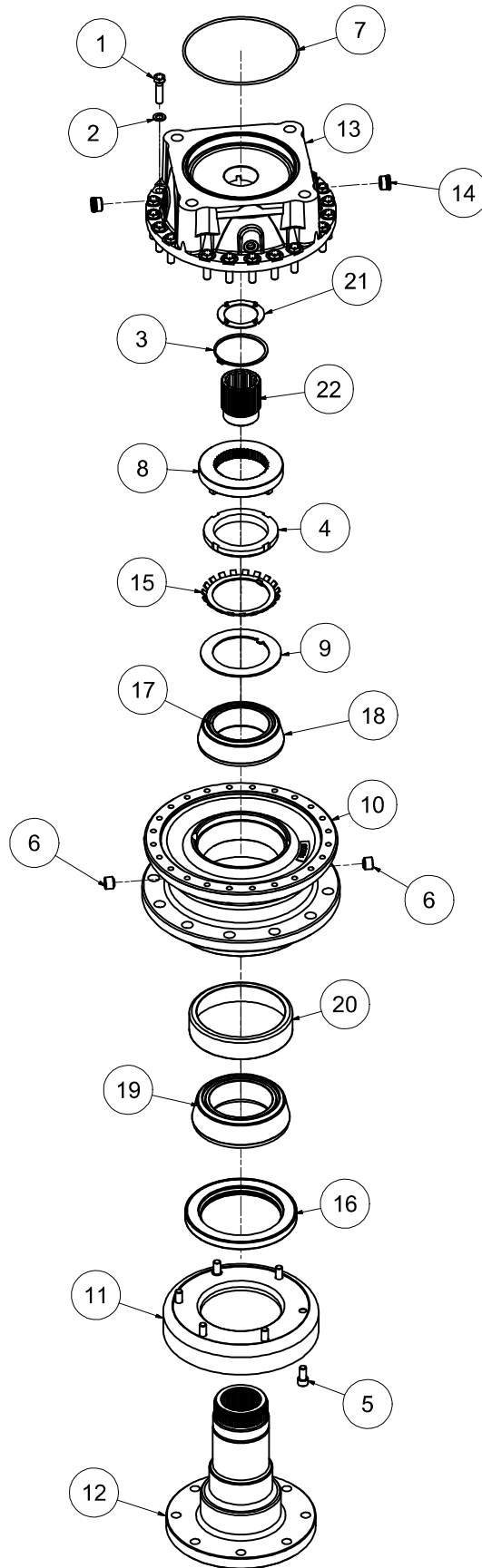


SPINDLE ASSEMBLY - 35-0108



35-0108 Rev 000

DECK ASSEMBLIES

SPINDLE ASSEMBLY - 35-0108

REF#	PARTS DESCRIPTION	REQ	PART#	TOF (ft.)
1	BOLT-HEX HEAD, FOR D3 SPINDLE	20	11-1611	
2	FLAT WASHER, FOR D3 SPINDLE	20	11-1612	
3	RETAINING RING, FOR D3 SPINDLE	1	11-1613	
4	LOCKNUT, FOR D3 SPINDLE	1	11-1614	
5	SOCKET HEAD CAPSCREW, FOR D3 SPINDLE	6	11-1616	
6	PIPE PLUG TO HUB MAGNETIC	2	21-1611	
7	O-RING SAE D	1	33-0098	
8	KEEPER PLATE, D3 SPINDLE	1	35-0098	
9	BOTTOM THRUST WASHER, D3 SPINDLE	1	35-0099	
10	HUB	1	35-0100	
11	GUARD	1	35-0102	
12	OUTPUT SHAFT, D3 SPINDLE	1	35-0103	
13	D3 SPINDLE CAP, "D" BASE HD	1	35-0109	
14	D3 SPINDLE SAE C TOP PORT PLUGS	1	35-0200	
	SEAL KIT		33-0078	
15	LOCK-WASHER, FOR D3 SPINDLE	1		
16	OIL-SEAL, D3 SPINDLE	1		
*	SEALANT	1		
	BEARING AND SEAL KIT		33-0079	
15	LOCK-WASHER, FOR D3 SPINDLE	1		
16	OIL-SEAL, D3 SPINDLE	1		
17	TOP BEARING-CONE, FOR D3 SPINDLE	1		
18	TOP BEARING-CUP, FOR D3 SPINDLE	1		
19	BOTTOM BEARING-CONE, FOR D3 SPINDLE	1		
20	BOTTOM BEARING-CUP, FOR D3 SPINDLE	1		
*	SEALANT	1		
	D3 SPINDLE REPLACEMENT INSERT KIT		33-0080	
21	TOP THRUST WASHER, D3 SPINDLE	1		
22	COUPLING, D3 SPINDLE, SAE D SPLINE	1		

* NOT SHOWN

35-0108	Rev 000
---------	---------