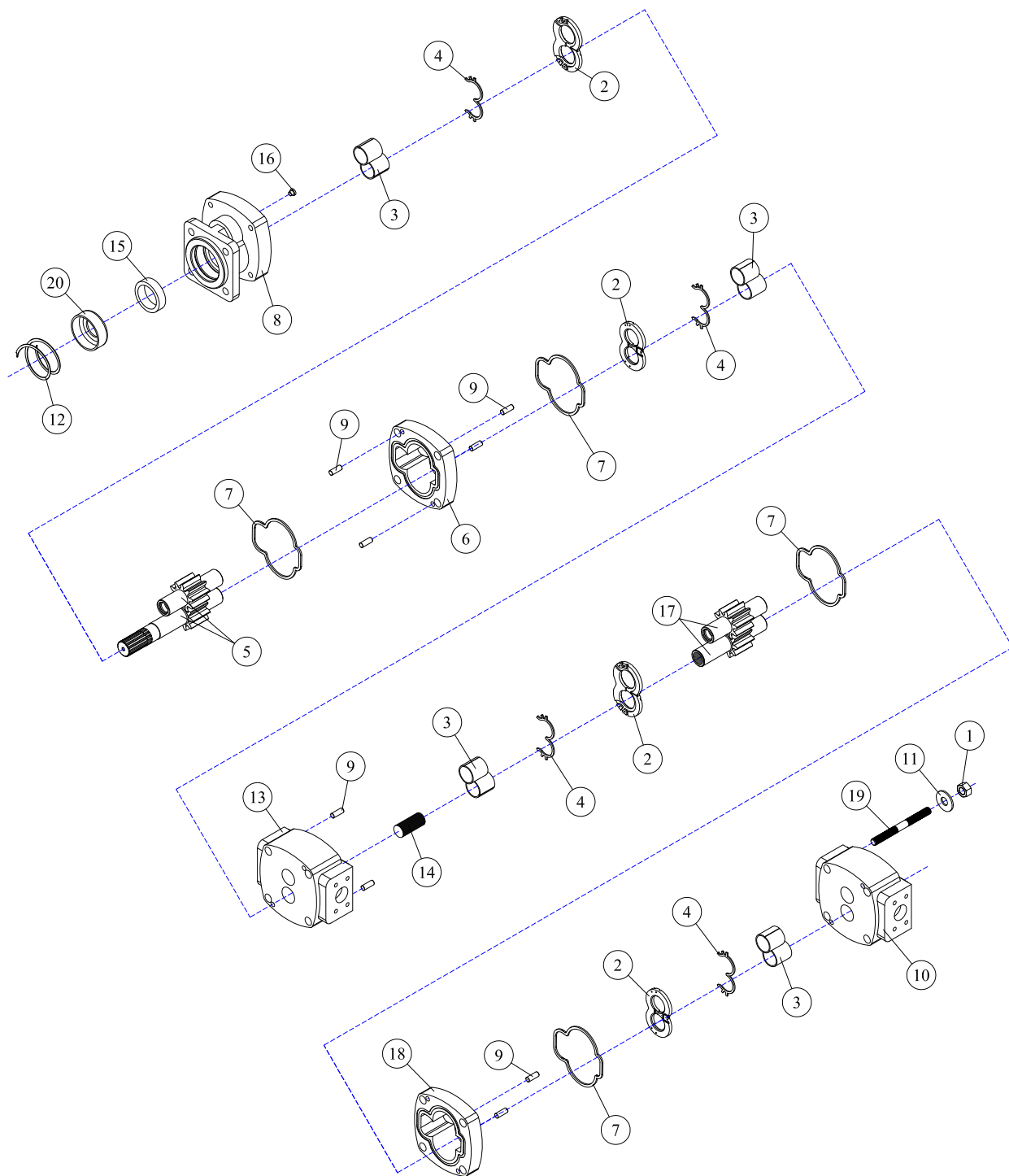


Pump Assembly



REF#	PARTS DESCRIPTION	REQ	PART #
1	NUT	4	11-1004
2	THRUST PLATE	4	30-1001
3	BUSHING	8	30-1002
4	SEAL KIT	1	30-1004
5	INTEGRAL DRIVE SHAFT AND GEAR SET	1	30-1005
6	GEAR HOUSING 1-3/4	1	30-1006
7	GASKET SEAL	4	30-1043
8	SHAFT END COVER	1	30-1065
9	DOWEL PINS	8	30-1068
10	PORT END COVER	1	30-1069

REF#	PARTS DESCRIPTION	REQ	PART #
11	WASHER	4	30-1071
12	SNAP RING	1	30-1094
13	BEARING CARRIER	1	30-1103
14	CONNECTING SHAFT	1	30-1104
15	LIP SEAL	1	30-1113
16	PLUG	1	30-1115
17	GEAR SET 1-3/4	1	30-1145
18	GEAR HOUSING 1-3/4	1	Call
19	STUDS	4	Call
20	SEAL RETAINER	1	