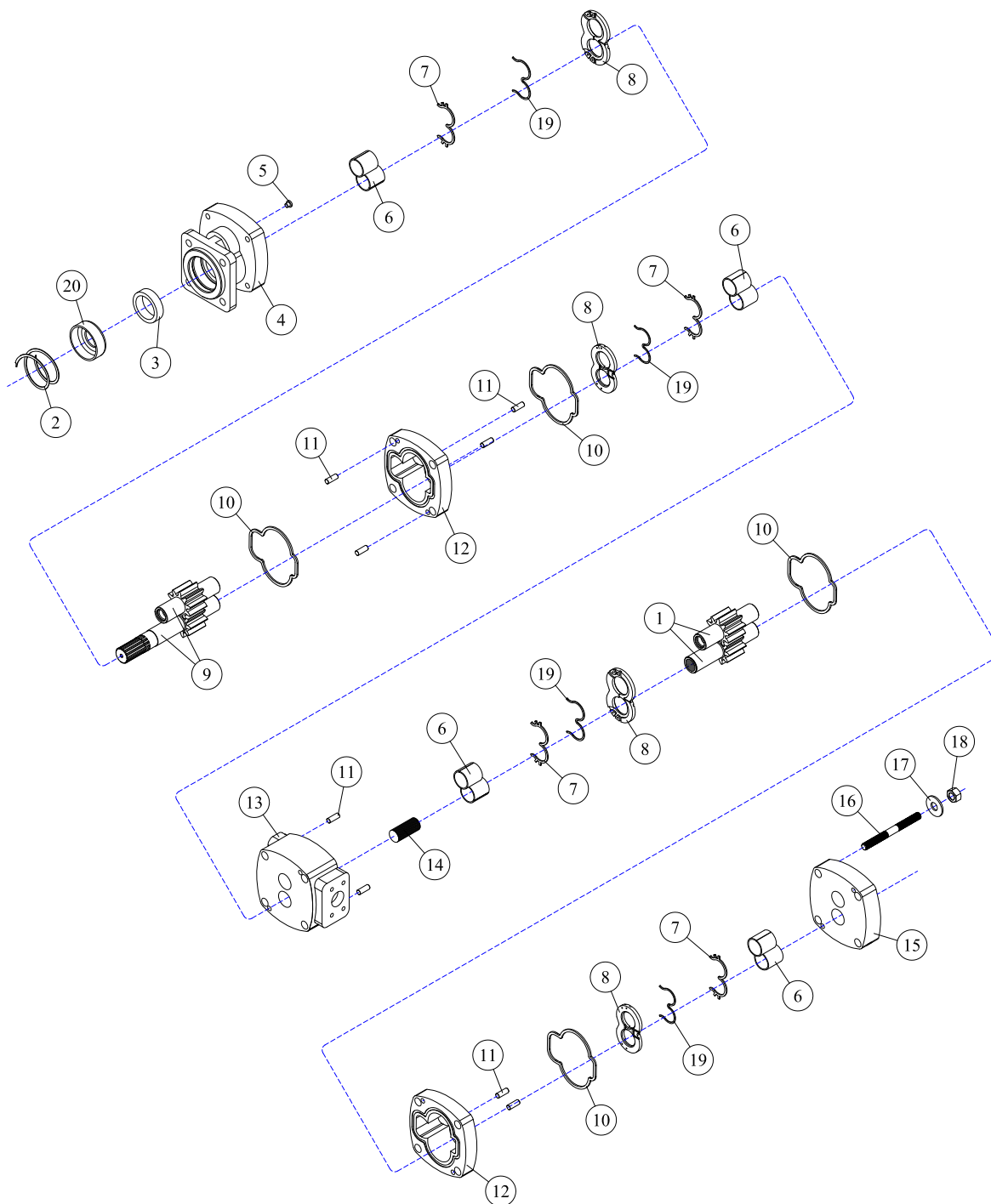


Pump Assembly



REF#	PARTS DESCRIPTION	REQ	PART #
1	GEAR SET 1-1/2	1	30-1007
2	SNAP RING	1	30-1094
3	LIP SEAL	1	30-1113
4	SHAFT END COVER	1	30-1114
5	PLUG	1	30-1115
6	BUSHING	8	30-1116
7	CHANNEL SEAL	4	30-1117
8	THRUST PLATE	4	30-1118
9	MATCHED GEAR SET	1	30-1119
10	GASKET SEAL	4	30-1120

REF#	PARTS DESCRIPTION	REQ	PART #
11	DOWEL PINS	8	30-1121
12	GEAR HOUSING	2	30-1122
13	BEARING CARRIER	1	30-1123
14	CONNECTING SHAFT	1	30-1124
15	PORT END COVER	1	30-1125
16	STUD	4	30-1126
17	WASHER	4	30-1127
18	NUT	4	30-1128
19	SEAL KIT (also includes 3, 7, & 10)	1	30-1129
20	SEAL RETAINER	1	Call