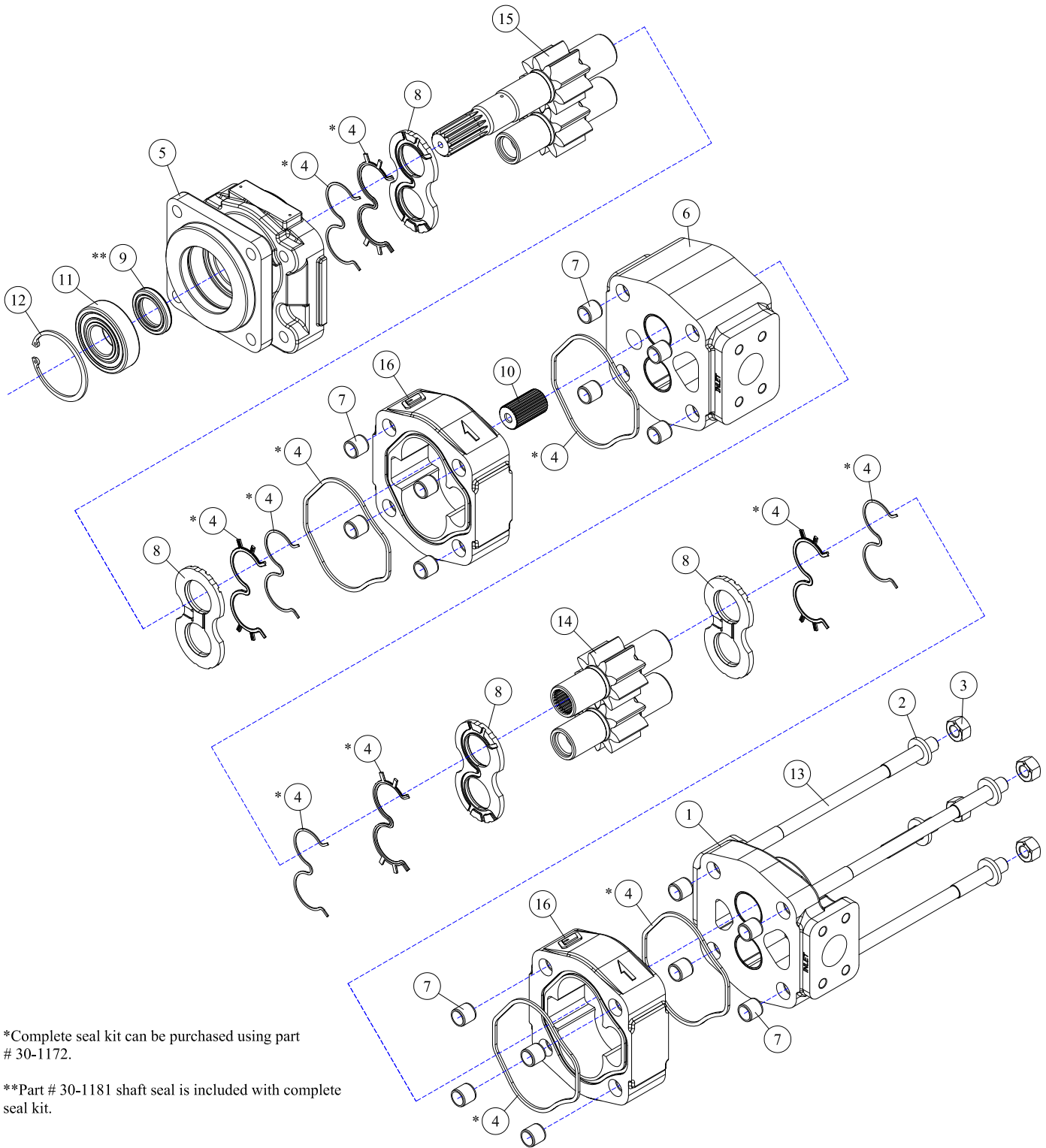


30-0004 Pump



*Complete seal kit can be purchased using part # 30-1172.

**Part # 30-1181 shaft seal is included with complete seal kit.

REF#	PARTS DESCRIPTION	REQ	PART #
1	PORT END COVER HOUSING	1	30-1083
2	WASHER	4	30-1127
3	HEX NUT	4	30-1128
4	*SEAL KIT	1	30-1172
5	SHAFT END COVER HOUSING	1	30-1174
6	BEARING CARRIER HOUSING	1	30-1175
7	DOWEL PIN	16	30-1179
8	THRUST PLATE	4	30-1180

REF#	PARTS DESCRIPTION	REQ	PART #
9	**SHAFT SEAL	1	30-1181
10	CONNECTOR SHAFT	1	30-1176
11	BALL BEARING	1	30-1173
12	SNAP RING	1	30-1009
13	STUD	4	30-1254
14	GEAR SET	1	30-1255
15	GEAR SHAFT SET	1	30-1256
16	GEAR HOUSING	2	30-1257