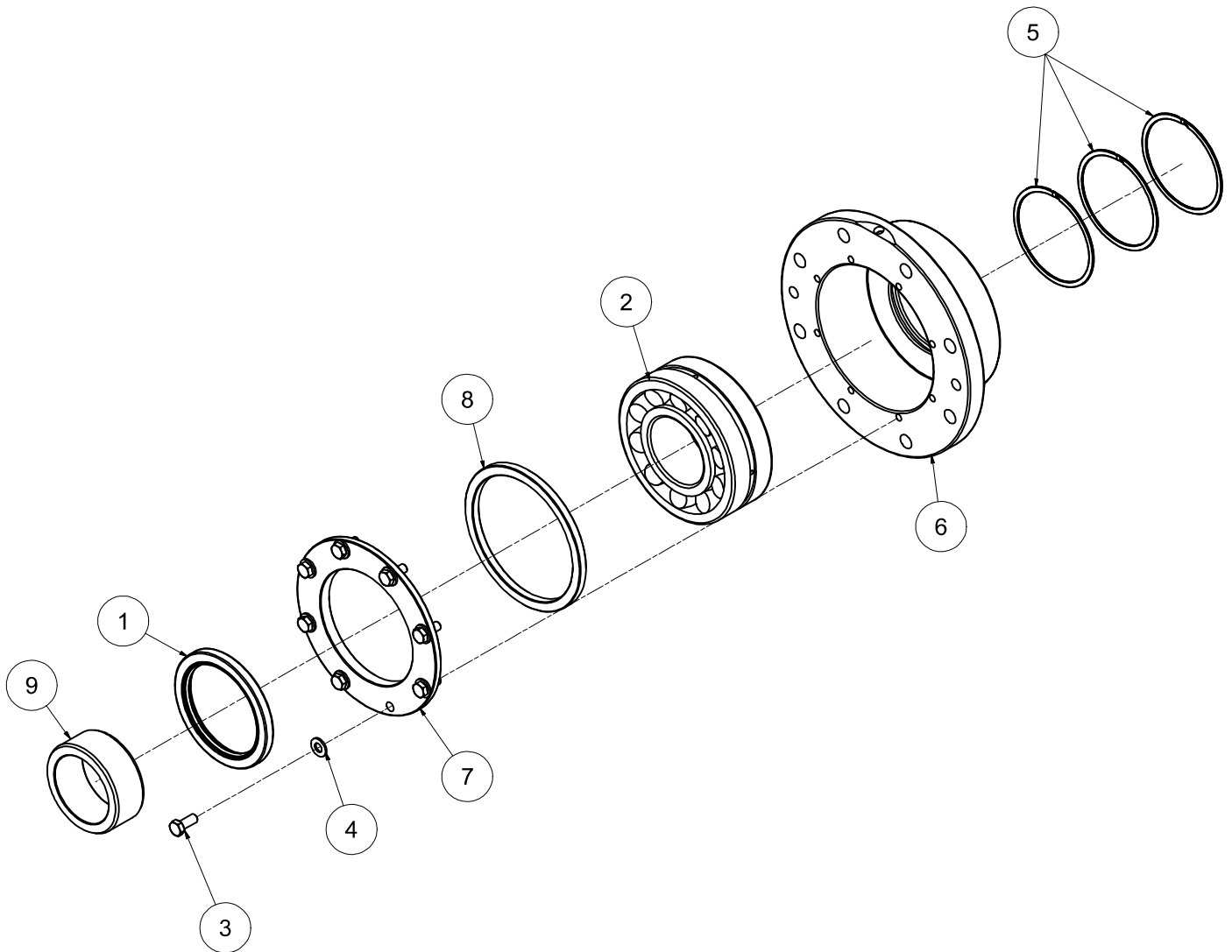


# CUTTER ASSEMBLIES

## BEARING ASSEMBLY - 10-1092, DRIVE SIDE

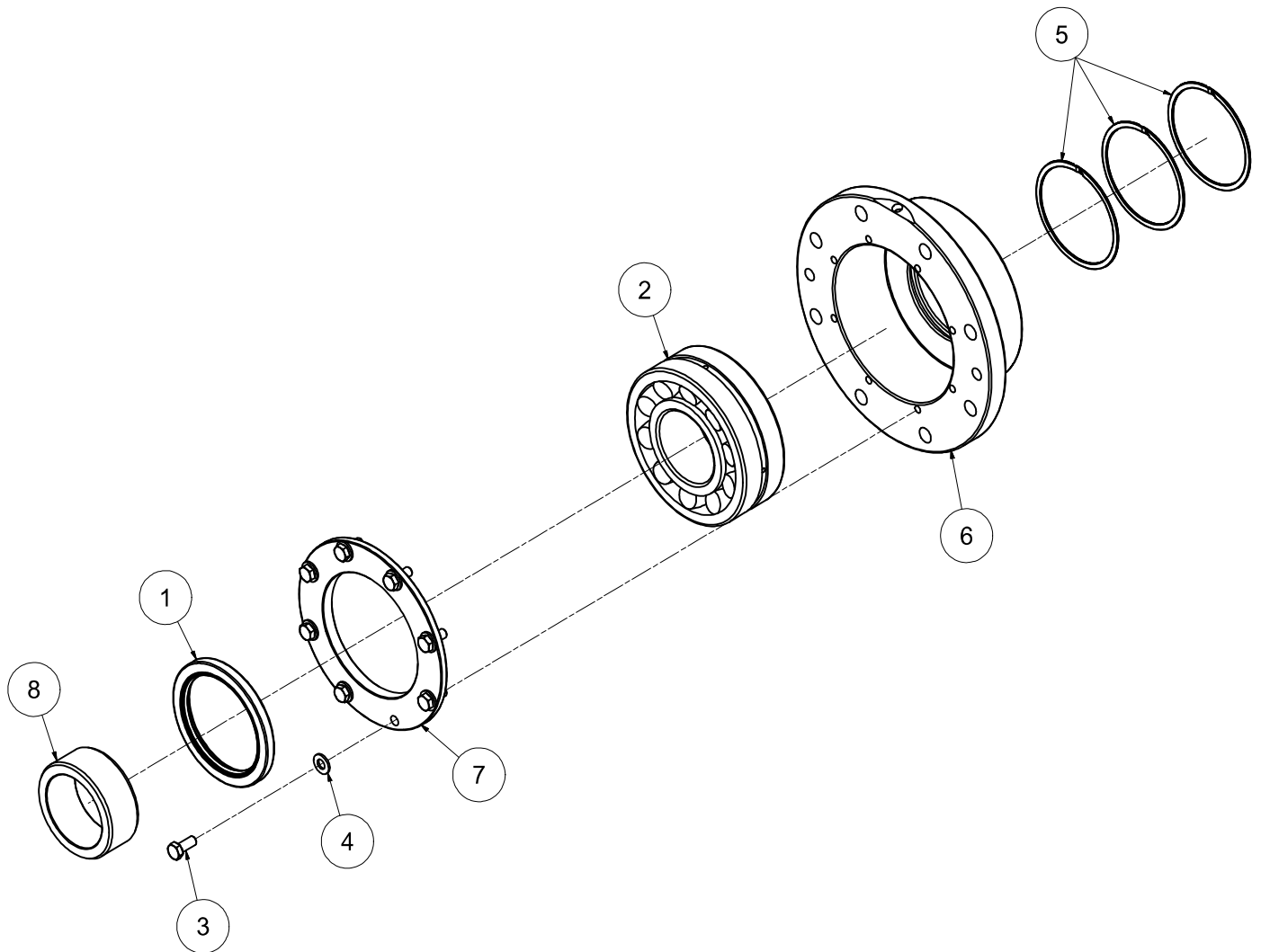


| REF# | PARTS DESCRIPTION                             | REQ | PART#   | TORQUE (ft-lbs) |
|------|---|-----|---------|-----------------|
| 1    | ROTARY SEAL                                   | 1   | 10-0123 |                 |
| 2    | SPHERICAL ROLLER BEARING                      | 1   | 10-1087 |                 |
| 3    | 5/16-18 X 3/4 GR 8 HEX CAP SCREW, YELLOW ZINC | 8   | 11-2266 | 18              |
| 4    | 5/16 SAE THRU HARDENED FLAT WASHER            | 8   | 11-2267 |                 |
| 5    | SPIRAL RING                                   | 3   | 24-0416 |                 |
| 6    | DRUM BEARING HOUSING                          | 1   | 90-7105 |                 |
| 7    | BEARING COVER                                 | 1   | 90-7109 |                 |
| 8    | BEARING SPACER, OUTER RING                    | 1   | 90-7112 |                 |
| 9    | SPACER, INNER RACE                            | 1   | 90-7114 |                 |

10-1092 Rev A

# CUTTER ASSEMBLIES

## BEARING ASSEMBLY - 10-1093, IDLE SIDE



| REF# | PARTS DESCRIPTION                             | REQ | PART#   | TORQUE (ft-lbs) |
|------|---|-----|---------|-----------------|
| 1    | ROTARY SEAL                                   | 1   | 10-0123 |                 |
| 2    | SPHERICAL ROLLER BEARING                      | 1   | 10-1087 |                 |
| 3    | 5/16-18 X 3/4 GR 8 HEX CAP SCREW, YELLOW ZINC | 8   | 11-2266 | 18              |
| 4    | 5/16 SAE THRU HARDENED FLAT WASHER            | 8   | 11-2267 |                 |
| 5    | SPIRAL RING                                   | 3   | 24-0416 |                 |
| 6    | DRUM BEARING HOUSING                          | 1   | 90-7105 |                 |
| 7    | BEARING COVER                                 | 1   | 90-7109 |                 |
| 8    | SPACER, INNER RACE                            | 1   | 90-7114 |                 |

10-1093 Rev A