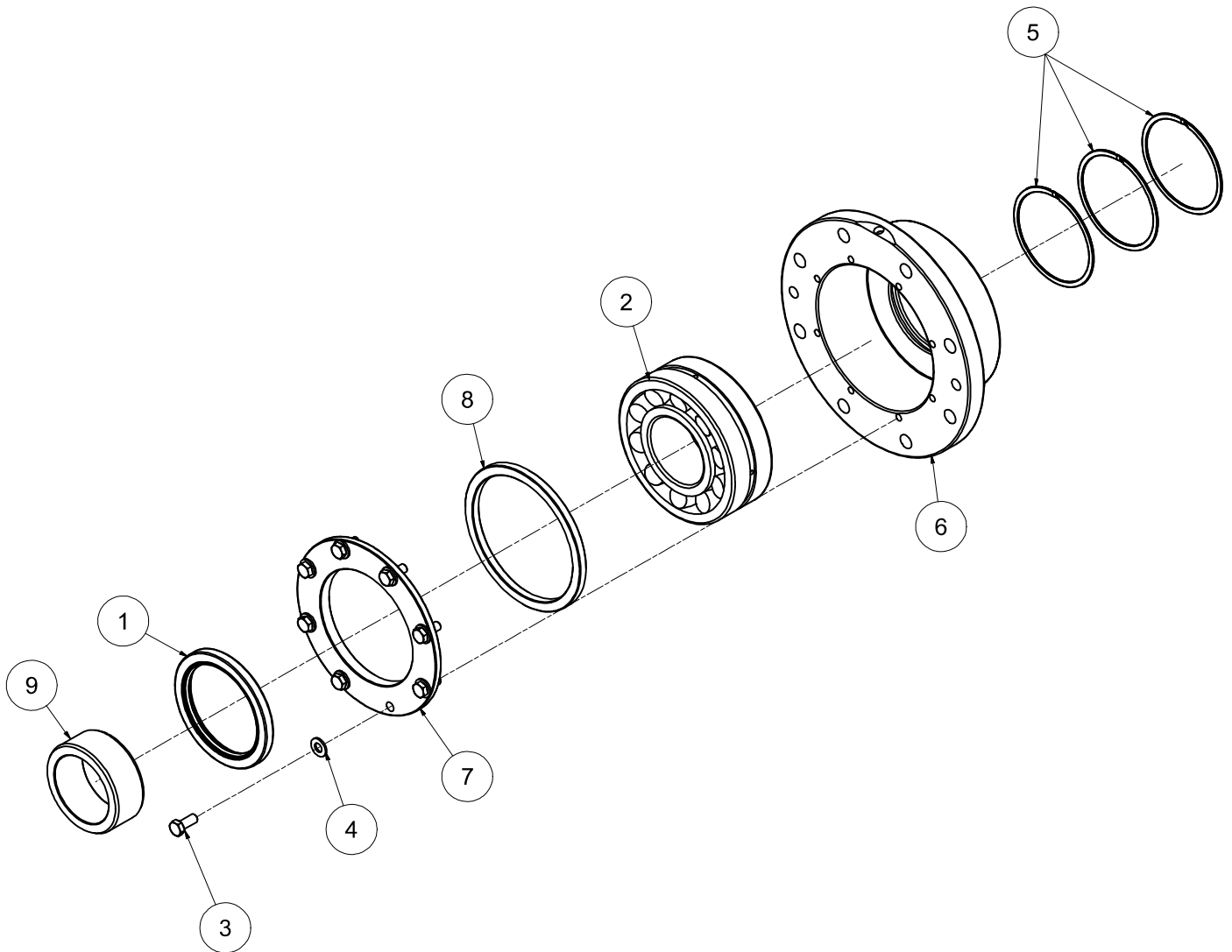


CUTTER ASSEMBLIES

BEARING ASSEMBLY - 10-1092, DRIVE SIDE



REF#	PARTS DESCRIPTION	REQ	PART#	TORQUE (ft-lbs)
1	ROTARY SEAL	1	10-0123	
2	SPHERICAL ROLLER BEARING	1	10-1087	
3	5/16-18 X 3/4 GR 8 HEX CAP SCREW, YELLOW ZINC	8	11-2266	18
4	5/16 SAE THRU HARDENED FLAT WASHER	8	11-2267	
5	SPIRAL RING	3	24-0416	
6	DRUM BEARING HOUSING	1	90-7105	
7	BEARING COVER	1	90-7109	
8	BEARING SPACER, OUTER RING	1	90-7112	
9	SPACER, INNER RACE	1	90-7114	

10-1092 Rev A